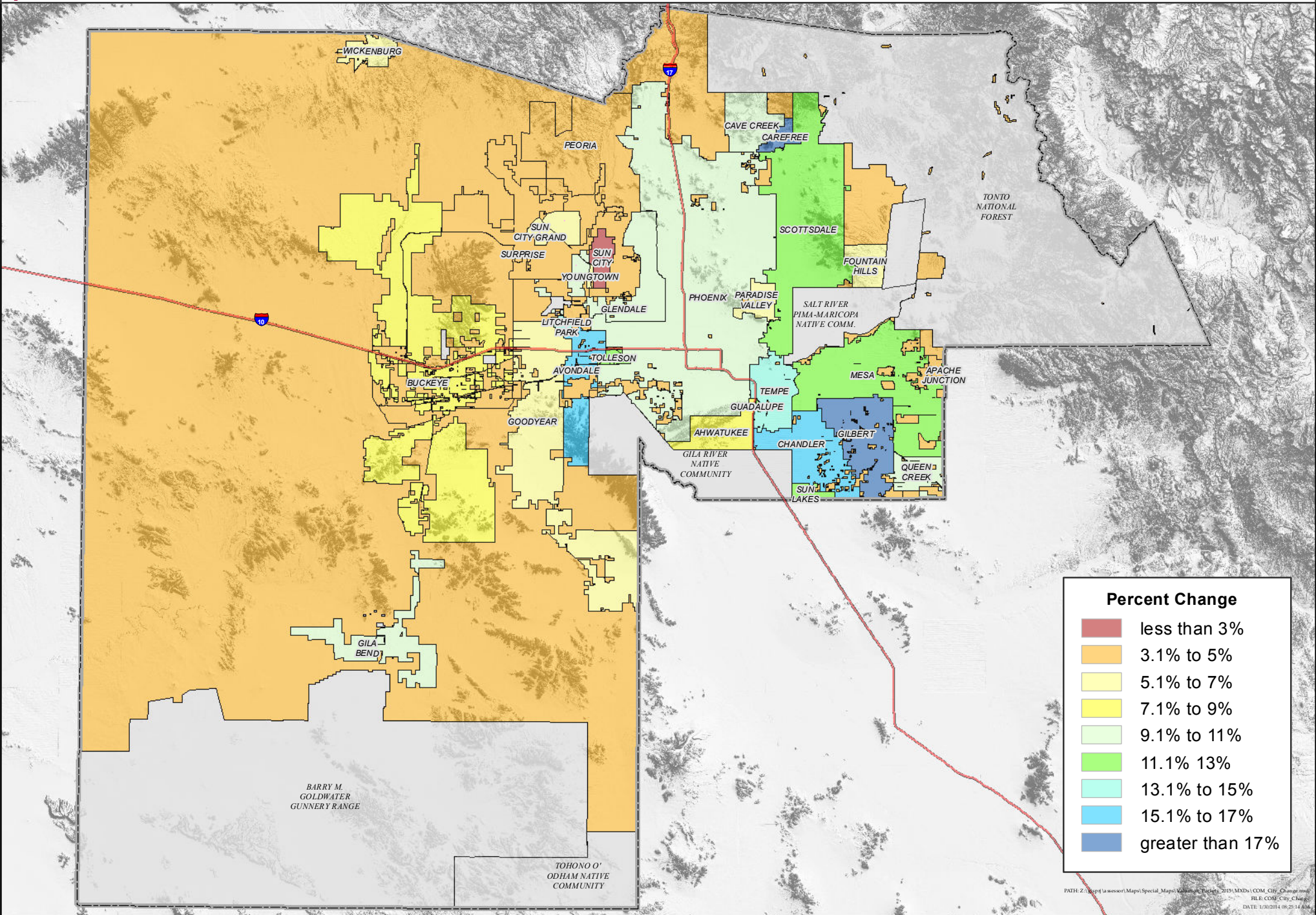


# MARICOPA COUNTY COMMERCIAL FULL CASH VALUE PERCENT CHANGE BY MUNICIPALITY

Tax Year 2015

Paul D. Petersen



Percent Change	
<span style="color: red;">■</span>	less than 3%
<span style="color: orange;">■</span>	3.1% to 5%
<span style="color: yellow;">■</span>	5.1% to 7%
<span style="color: lightyellow;">■</span>	7.1% to 9%
<span style="color: lightgreen;">■</span>	9.1% to 11%
<span style="color: green;">■</span>	11.1% to 13%
<span style="color: cyan;">■</span>	13.1% to 15%
<span style="color: lightblue;">■</span>	15.1% to 17%
<span style="color: blue;">■</span>	greater than 17%

PATH: Z:\app\la\esw\Map\Special\_Maps\Valuation\Percent\_Change\_2015\MXD\COM\_City\_Change.mxd  
FILE: COM\_City\_Change  
DATE: 1/30/2014 08:25:14 AM