

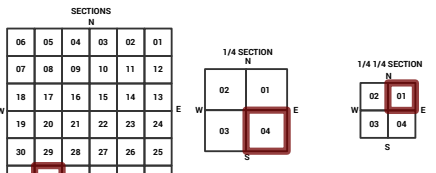
# MARICOPA COUNTY

STATE OF ARIZONA

PT. SECTION 32 T05N R01E

## 763 - 32 - 04 - 01

TOWNSHIP & RANGE SECTION 1/4 SECTION 1/4 1/4 SECTION

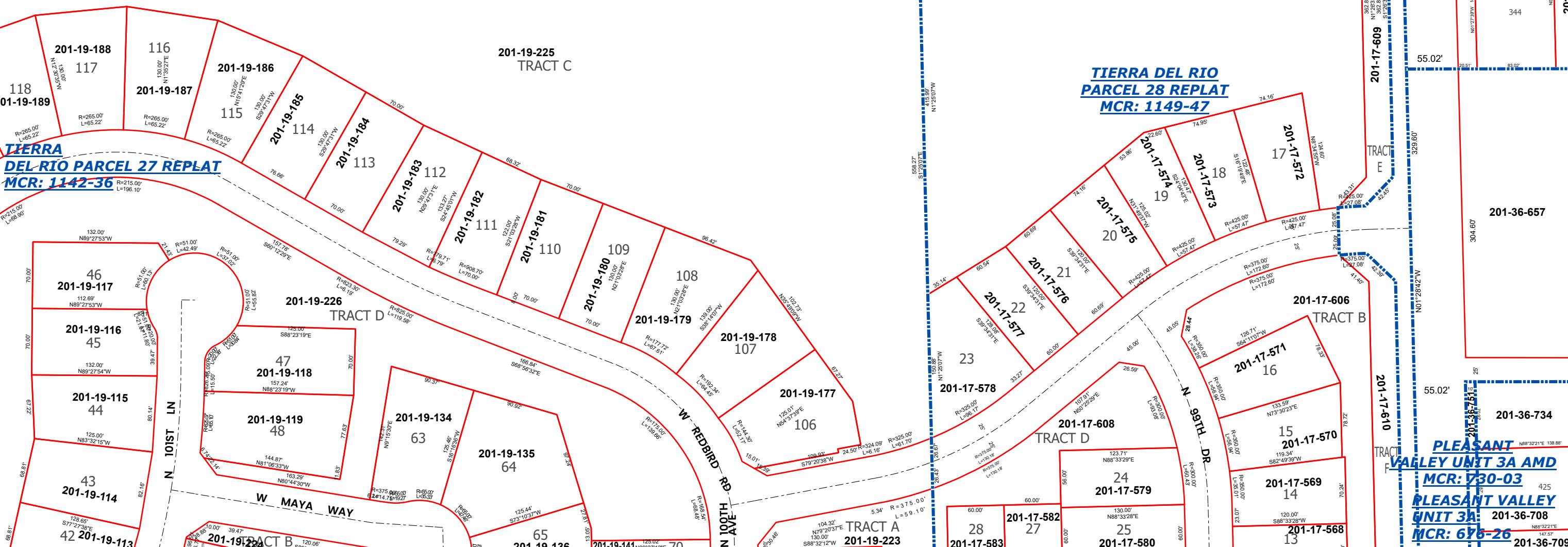


26

201-17-076  
**TIERRA DEL RIO REPLAT**  
MCR: 949-13

201-17-739  
TRACT F  
**TIERRA DEL RIO PARCEL 23 REPLAT**  
MCR: 1153-30

201-17-607  
TRACT C  
**TIERRA DEL RIO PARCEL 28 REPLAT**  
MCR: 1149-47



**BETANCOURT MLD**  
MCR: 996-47  
201-20-584

**BRAGA HOMES**  
MCR: 1846-18  
201-36-966

**201-36-384**  
201-36-321  
201-36-320

**201-36-322**  
201-36-323

**PLEASANT VALLEY UNIT 2**  
MCR: 628-49  
201-36-383

**201-36-327**  
201-36-328

**201-36-657**

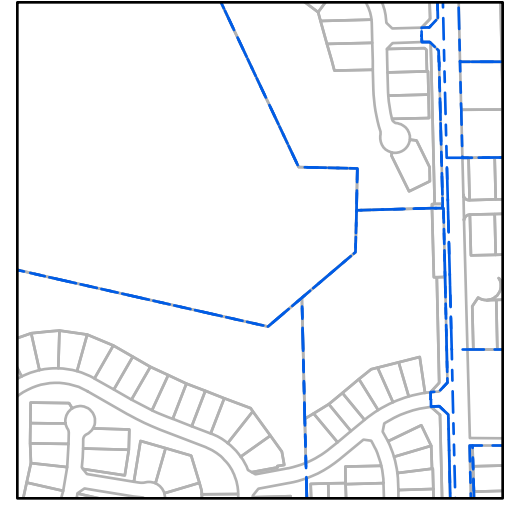
**201-36-734**

**PLEASANT VALLEY UNIT 3A AMD**  
MCR: 730-03

**PLEASANT VALLEY UNIT 3A**  
MCR: 676-26

201-36-708  
201-36-709

Parcels updated within this map



MARICOPA COUNTY ASSESSOR'S OFFICE  
301 W. Jefferson Street  
Phoenix, AZ 85003  
**MARICOPA COUNTY ASSESSOR'S OFFICE**  
<https://mcaassessor.maricopa.gov>

**LEGEND:** Tax Parcels Sections Subdivisions  
Lots Section Corners Centerlines

Disclaimer - Indemnification  
CAUTION! USERS SHOULD INDEPENDENTLY RESEARCH AND VERIFY INFORMATION WITHIN THIS DATASET OR MAP BEFORE RELYING ON IT.

The Assessor's Office has compiled information within this dataset or map that it uses to identify, classify, and value real and personal property. Please contact the Assessor's Office at 602 506-3406 if you believe any information is incomplete, out of date, or incorrect so that appropriate corrections can be addressed. Please note that a statutory process is also available to correct errors pursuant to Arizona Revised Statutes 42-16254.

The Assessor does not guarantee that any information contained within this dataset or map is accurate, complete or current. In many instances, the Assessor has gathered information from independent sources and made it available within this dataset or map, and the original information may have contained errors and omissions. Errors and omissions may have occurred in the process of gathering, interpreting, and reporting the information. Information within this dataset or map is not updated "real time." In addition, Users are cautioned that the process used within this dataset or map to illustrate the boundaries of adjacent parcels is not always consistent with the recorded documents for such parcels. The parcel boundaries depicted within this dataset or maps are for illustrative purposes only, and the exact relationship of adjacent parcels should be independently researched and verified. The information provided within this dataset or map is not the equivalent of a title report or a real estate survey. Users should independently research, investigate, and verify all information before relying on it or using it in the preparation of legal documents.

Map Reprint Date: 2/17/2026