

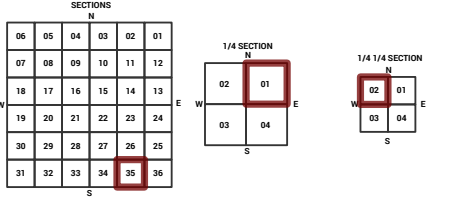
MARICOPA COUNTY STATE OF ARIZONA

PT. SECTION 35 T05N R02E

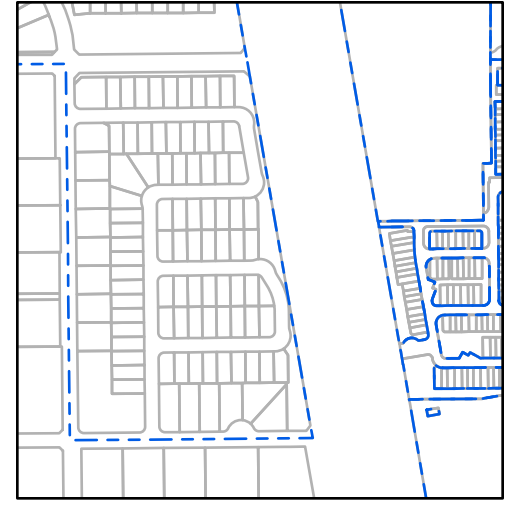
764 - 35 - 01 - 02

TOWNSHIP & RANGE SECTION 1/4 SECTION 1/4 1/4 SECTION

Grid table showing section numbers from 714 to 914 across 10 columns and 20 rows.



Parcels updated within this map



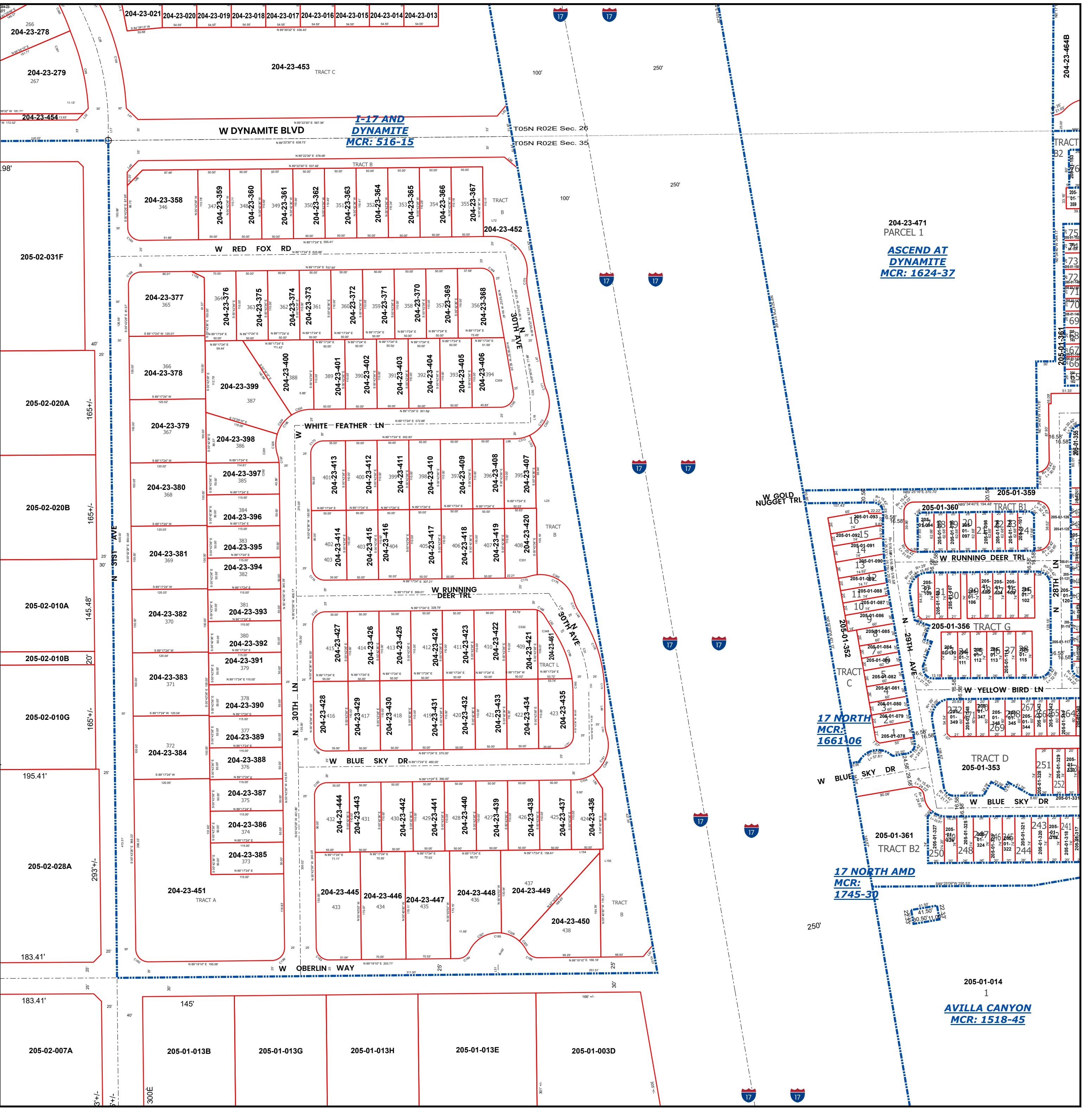
MARICOPA COUNTY ASSESSOR'S OFFICE 301 W. Jefferson Street Phoenix, AZ 85003

LEGEND: Tax Parcels, Sections, Subdivisions, Lots, Section Corners, Centerlines

Disclaimer - Indemnification CAUTION! USERS SHOULD INDEPENDENTLY RESEARCH AND VERIFY INFORMATION WITHIN THIS DATASET OR MAP BEFORE RELYING ON IT.

The Assessor's Office has compiled information within this dataset or map that it uses to identify, classify, and value real and personal property.

The Assessor does not guarantee that any information contained within this dataset or map is accurate, complete or current.



204-23-471 PARCEL 1 ASCEND AT DYNAMITE MCR: 1624-37

17 NORTH MCR: 1661-06

17 NORTH AMD MCR: 1745-30

205-01-014 1 AVILLA CANYON MCR: 1518-45