

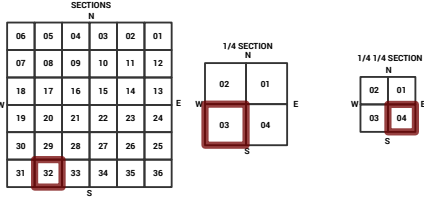
MARICOPA COUNTY
STATE OF ARIZONA

PT. SECTION 32 T04N R04E

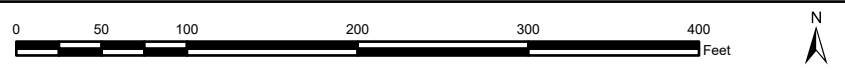
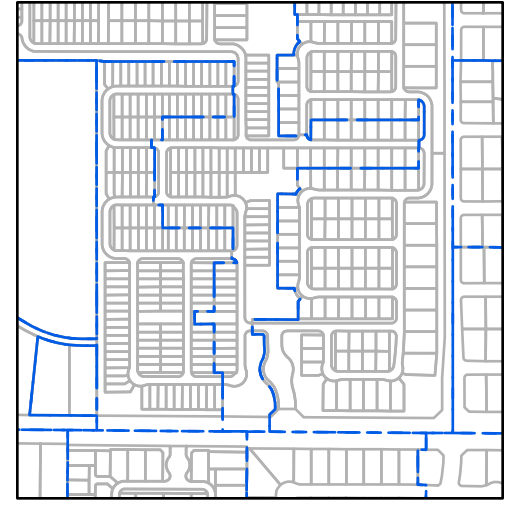
780 - 32 - 03 - 04

TOWNSHIP & RANGE SECTION 1/4 SECTION 1/4 1/4 SECTION

Grid map showing section numbers from 714 to 900.



Parcels updated within this map



MARICOPA COUNTY
ASSESSOR'S OFFICE
301 W. Jefferson Street
Phoenix, AZ 85003



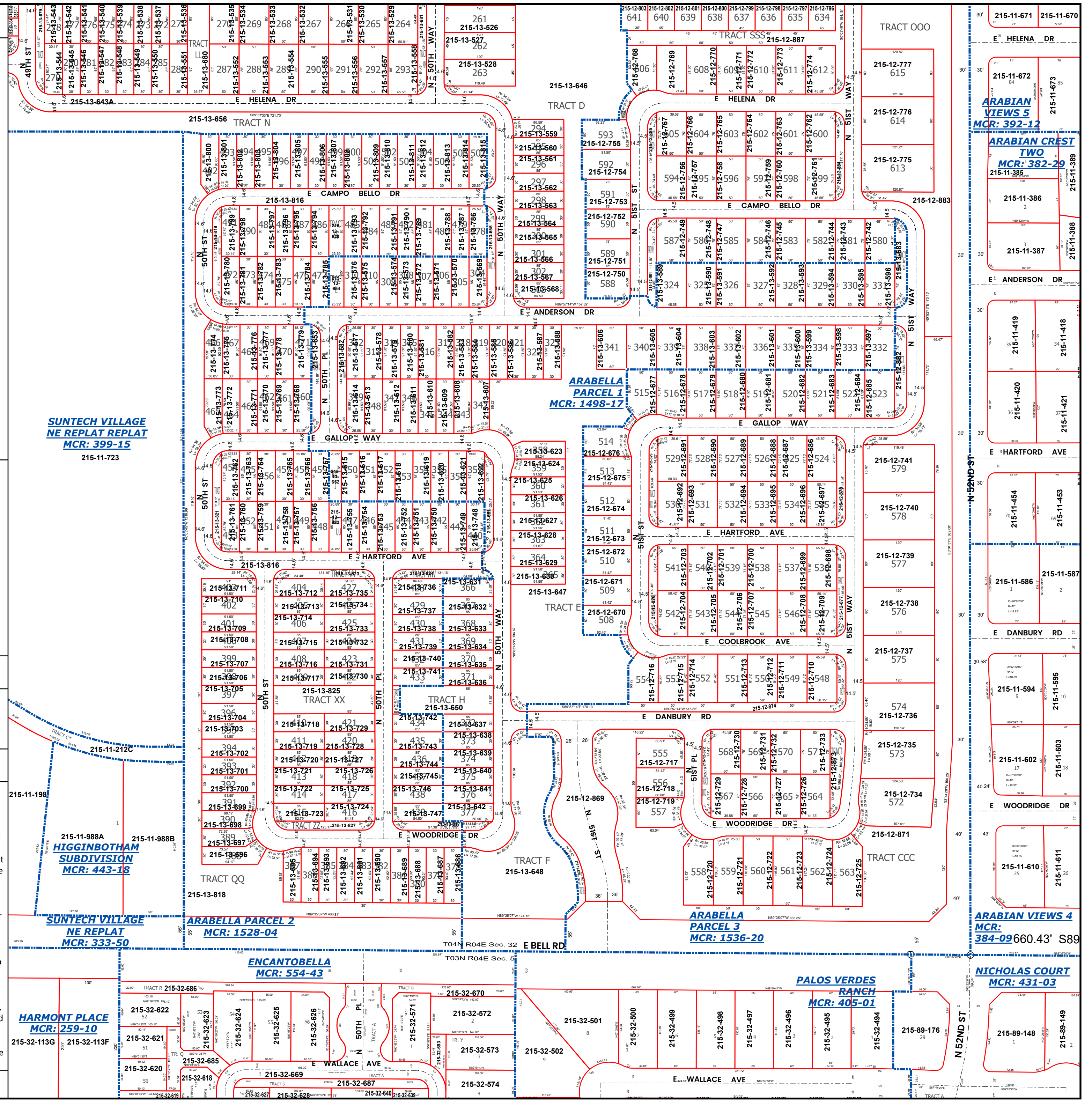
LEGEND: Tax Parcels, Sections, Subdivisions, Lots, Section Corners, Centerlines

Disclaimer - Indemnification
CAUTION! USERS SHOULD INDEPENDENTLY RESEARCH AND VERIFY INFORMATION WITHIN THIS DATASET OR MAP BEFORE RELYING ON IT.

The Assessor's Office has compiled information within this dataset or map that it uses to identify, classify, and value real and personal property. Please contact the Assessor's Office at 602 506-3406 if you believe any information is incomplete, out of date, or incorrect so that appropriate corrections can be addressed. Please note that a statutory process is also available to correct errors pursuant to Arizona Revised Statutes 42-16254.

The Assessor does not guarantee that any information contained within this dataset or map is accurate, complete or current. In many instances, the Assessor has gathered information from independent sources and made it available within this dataset or map, and the original information may have contained errors and omissions. Errors and omissions may have occurred in the process of gathering, interpreting, and reporting the information. Information within this dataset or map is not updated "real time." In addition, Users are cautioned that the process used within this dataset or map to illustrate the boundaries of adjacent parcels is not always consistent with the recorded documents for such parcels. The parcel boundaries depicted within this dataset or maps are for illustrative purposes only, and the exact relationship of adjacent parcels should be independently researched and verified. The information provided within this dataset or map is not the equivalent of a title report or a real estate survey. Users should independently research, investigate, and verify all information before relying on it or using it in the preparation of legal documents.

Map Reprint Date: 2/18/2026



SUNTECH VILLAGE
NE REPLAT REPLAT
MCR: 399-15

215-11-723

HIGGINBOTHAM
SUBDIVISION
MCR: 443-18

215-11-988A

215-11-988B

SUNTECH VILLAGE
NE REPLAT
MCR: 333-50

215-11-212C

ARABELLA PARCEL 2
MCR: 1528-04

ENCANTOBELLA
MCR: 554-43

HARMONT PLACE
MCR: 259-10

215-32-113G

215-32-622

215-32-621

215-32-620

215-32-618

215-32-619

215-32-627

215-32-628

215-32-572

215-32-573

215-32-574

215-32-575

215-32-576

215-32-577

215-32-501

215-32-502

215-32-503

215-32-504

215-32-505

215-32-506

215-32-499

215-32-498

215-32-497

215-32-496

215-32-495

215-32-494

215-89-176

215-89-148

215-89-149

215-89-150

215-89-151

215-89-152

215-11-611

215-11-610

215-11-609

215-11-608

215-11-607

215-11-606