

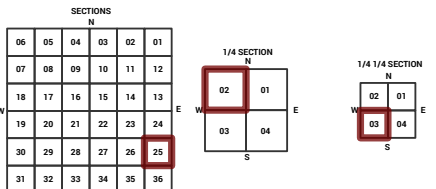
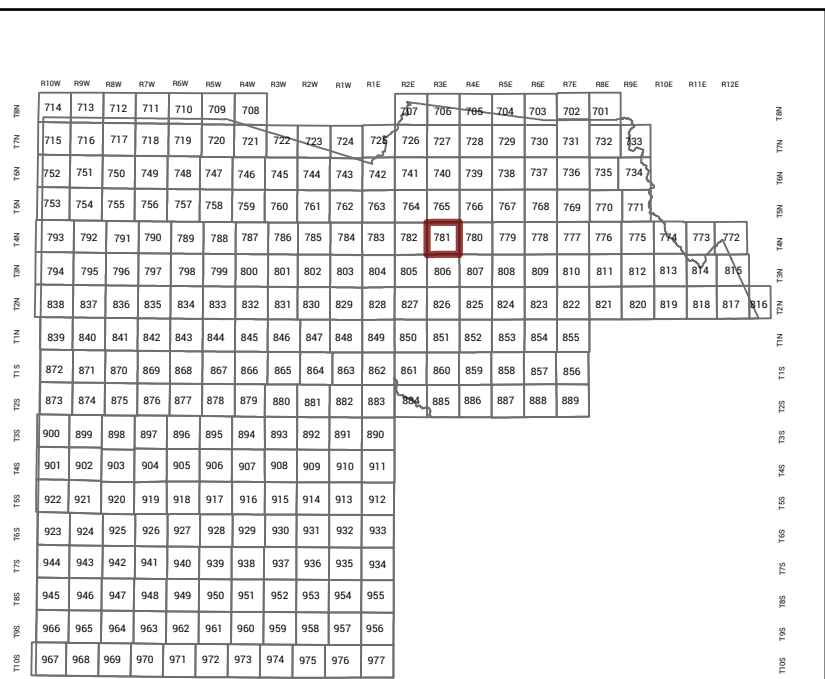
# MARICOPA COUNTY

STATE OF ARIZONA

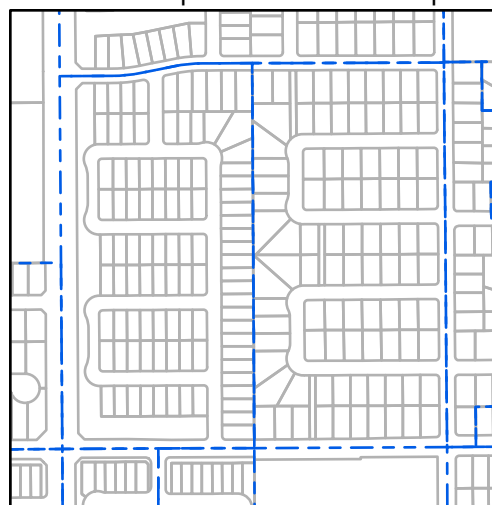
PT. SECTION 25 T04N R03E

## 781 - 25 - 02 - 03

TOWNSHIP & RANGE SECTION 1/4 SECTION 1/4 1/4 SECTION



Parcels updated within this map



MARICOPA COUNTY  
ASSESSOR'S OFFICE



301 W. Jefferson Street  
Phoenix, AZ 85003  
<https://mcaassessor.maricopa.gov>

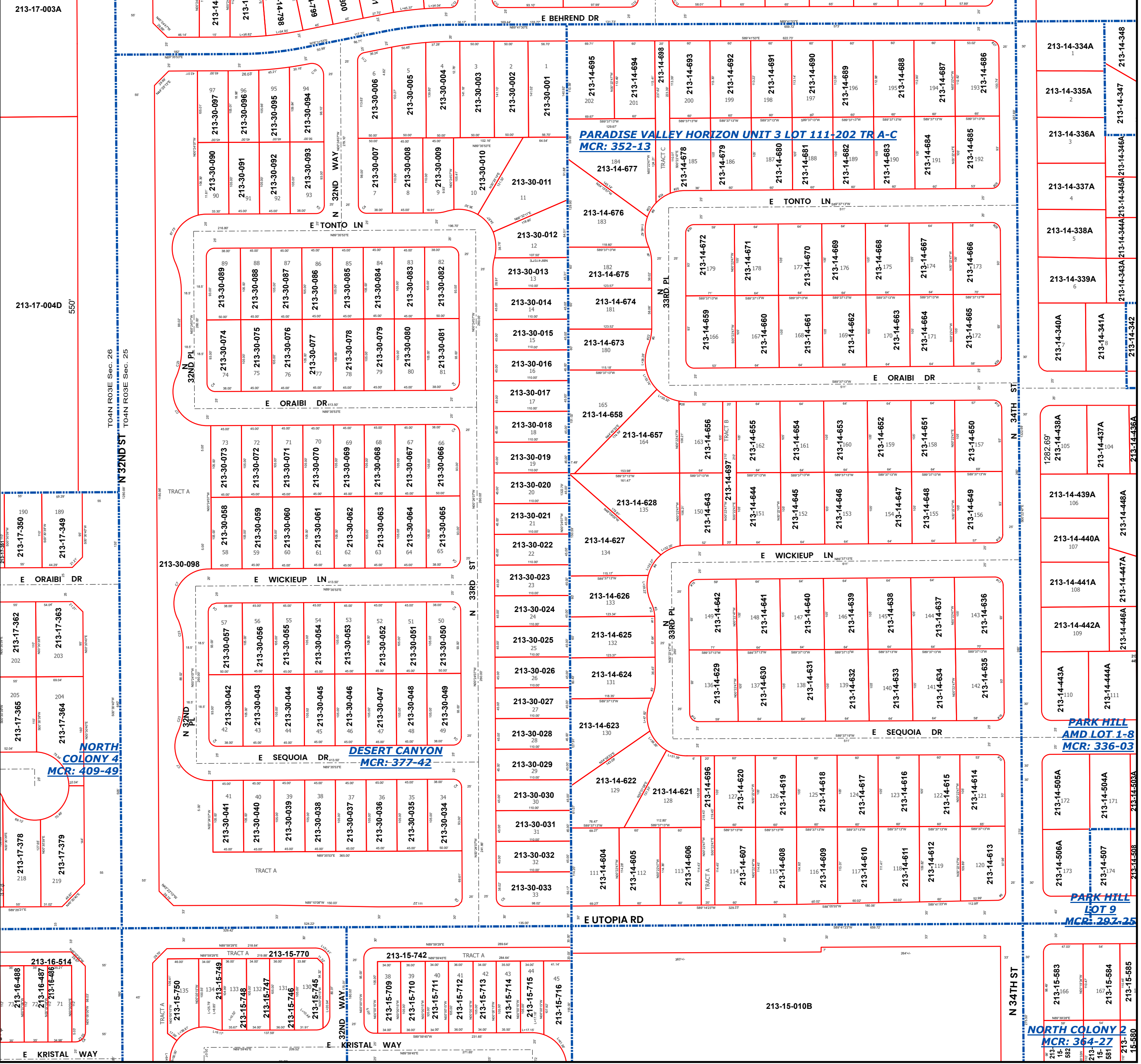
**LEGEND:** Tax Parcels Sections Subdivisions  
Lots Section Corners Centerlines

Disclaimer - Indemnification  
CAUTION! USERS SHOULD INDEPENDENTLY RESEARCH AND VERIFY INFORMATION WITHIN THIS DATASET OR MAP BEFORE RELYING ON IT.

The Assessor's Office has compiled information within this dataset or map that it uses to identify, classify, and value real and personal property. Please contact the Assessor's Office at 602 506-3406 if you believe any information is incomplete, out of date, or incorrect so that appropriate corrections can be addressed. Please note that a statutory process is also available to correct errors pursuant to Arizona Revised Statutes 42-16254.

The Assessor does not guarantee that any information contained within this dataset or map is accurate, complete or current. In many instances, the Assessor has gathered information from independent sources and made it available within this dataset or map, and the original information may have contained errors and omissions. Errors and omissions may have occurred in the process of gathering, interpreting, and reporting the information. Information within this dataset or map is not updated "real time." In addition, Users are cautioned that the process used within this dataset or map to illustrate the boundaries of adjacent parcels is not always consistent with the recorded documents for such parcels. The parcel boundaries depicted within this dataset or maps are for illustrative purposes only, and the exact relationship of adjacent parcels should be independently researched and verified. The information provided within this dataset or map is not the equivalent of a title report or a real estate survey. Users should independently research, investigate, and verify all information before relying on it or using it in the preparation of legal documents.

Map Reprint Date: 2/19/2026



PRELUDE AT  
PARADISE VALLEY  
MCR: 455-09  
213-30-471

KAUFMAN & BROAD  
AT DESERT CANYON  
MCR: 370-09 213-14-984

PARADISE VALLEY HORIZON UNIT 3 LOT 111-202 TR A-C  
MCR: 352-13

213-17-003A

213-17-004D

213-17-362

213-17-363

213-17-364

213-17-365

213-17-378

213-17-379

213-16-488

213-16-487

213-16-486

213-16-485

213-16-484

213-16-483

213-16-482

213-16-481

213-16-480

213-16-479

213-16-478

213-16-477

213-16-476

213-16-475

213-16-474

213-16-473

213-16-472

213-16-471

213-16-470

213-16-469

213-16-468

213-16-467

213-16-466

213-16-465

213-16-464

213-16-463

213-16-462

213-16-461

213-16-460

213-16-459

213-16-458

213-16-457

213-16-456

213-16-455

213-16-454

213-16-453

213-16-452

213-16-451

213-16-450

213-16-449

213-16-448

213-16-447

213-16-446

213-16-445

213-16-444

213-16-443

213-16-442

213-16-441

213-16-440

213-16-439

213-16-438

213-16-437

213-16-436

213-16-435

213-16-434

213-16-433

213-16-432

213-16-431

213-16-430

213-16-429

213-16-428

213-16-427

213-16-426

213-16-425

213-16-424

213-16-423

213-16-422

213-16-421

213-16-420

213-16-419

213-16-418

213-16-417

213-16-416

213-16-415

213-16-414

213-16-413

213-16-412

213-16-411

213-16-410

213-16-409

213-16-408

213-16-407

213-16-406

213-16-405

213-16-404

213-16-403

213-16-402

213-16-401

213-16-400

213-16-399

213-16-398

213-16-397

213-16-396

213-16-395

213-16-394

213-16-393

213-16-392

213-16-391

213-16-390

213-16-389

213-16-388

213-16-387

213-16-386

213-16-385

213-16-384

213-16-383

213-16-382

213-16-381

213-16-380

213-16-379

213-16-378

213-16-377

213-16-376

213-16-375

213-16-374

213-16-373

213-16-372

213-16-371

213-16-370

213-16-369

213-16-368

213-16-367

213-16-366

213-16-365

213-16-364

213-16-363

213-16-362

213-16-361

213-16-360

213-16-359

213-16-358

213-16-357

213-16-356

213-16-355

213-16-354

213-16-353

213-16-352

213-16-351

213-16-350

213-16-349

213-16-348

213-16-347

213-16-346

213-16-345

213-16-344

213-16-343

213-16-342

213-16-341

213-16-340

213-16-339

213-16-338

213-16-337

213-16-336

213-16-335

213-16-334

213-16-333

213-16-332

213-16-331

213-16-330

213-16-329

213-16-328

213-16-327

213-16-326

213-16-325

213-16-324

213-16-323

213-16-322

213-16-321

213-16-320

213-16-319

213-16-318

213-16-317

213-16-316

213-16-315

213-16-314

213-16-313

213-16-312

213-16-311

213-16-310

213-16-309

213-16-308

213-16-307

213-16-306

213-16-305

213-16-304

213-16-303

213-16-302

213-16-301

213-16-300

213-16-299

213-16-298

213-16-297

213-16-296

213-16-295

213-16-294

213-16-293

213-16-292

213-16-291

213-16-290

213-16-289

213-16-288

213-16-287

213-16-286

213-16-285

213-16-284

213-16-283

213-16-282

213-16-281

213-16-280

213-16-279

213-16-278

213-16-277

213-16-276

213-16-275

213-16-274

213-16-273

213-16-272

213-16-271

213-16-270

213-16-269

213-16-268

213-16-267

213-16-266

213-16-265

213-16-264

213-16-263

213-16-262

213-16-261

213-16-260

213-16-259

213-16-258

213-16-257

213-16-256

213-16-255

213-16-254

213-16-253

213-16-252

213-16-251

213-16-250

213-16-249

213-16-248

213-16-247

213-16-246

213-16-245

</