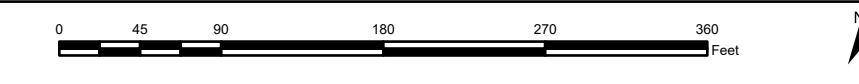
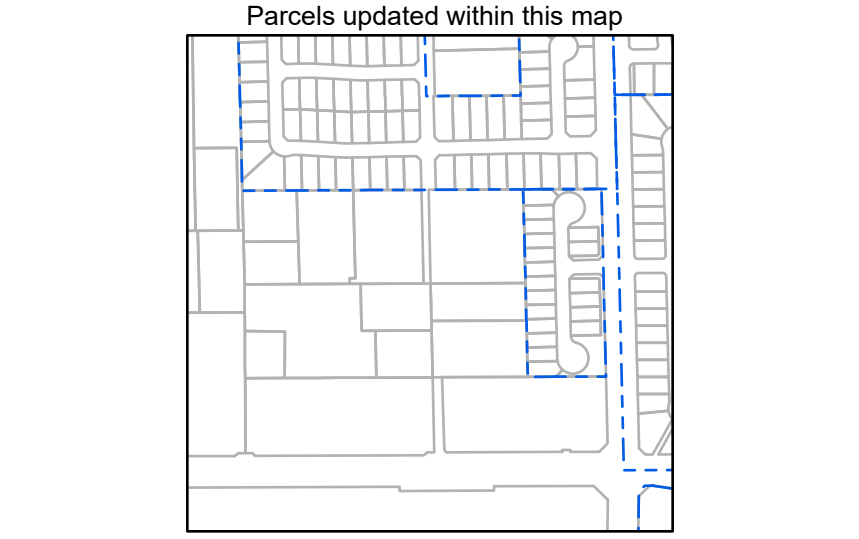
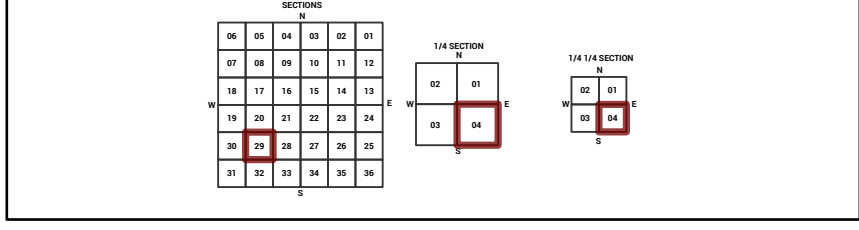
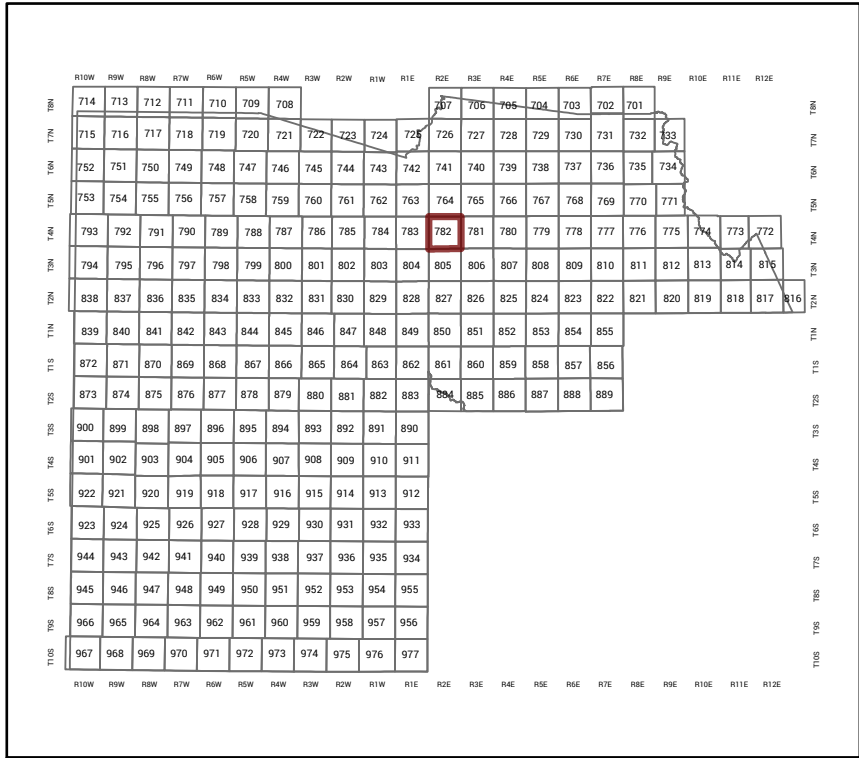


MARICOPA COUNTY STATE OF ARIZONA

PT. SECTION 29 T04N R02E

782 - 29 - 04 - 04

TOWNSHIP & RANGE SECTION 1/4 SECTION 1/4 SECTION



MARICOPA COUNTY ASSESSOR'S OFFICE 301 W. Jefferson Street Phoenix, AZ 85003

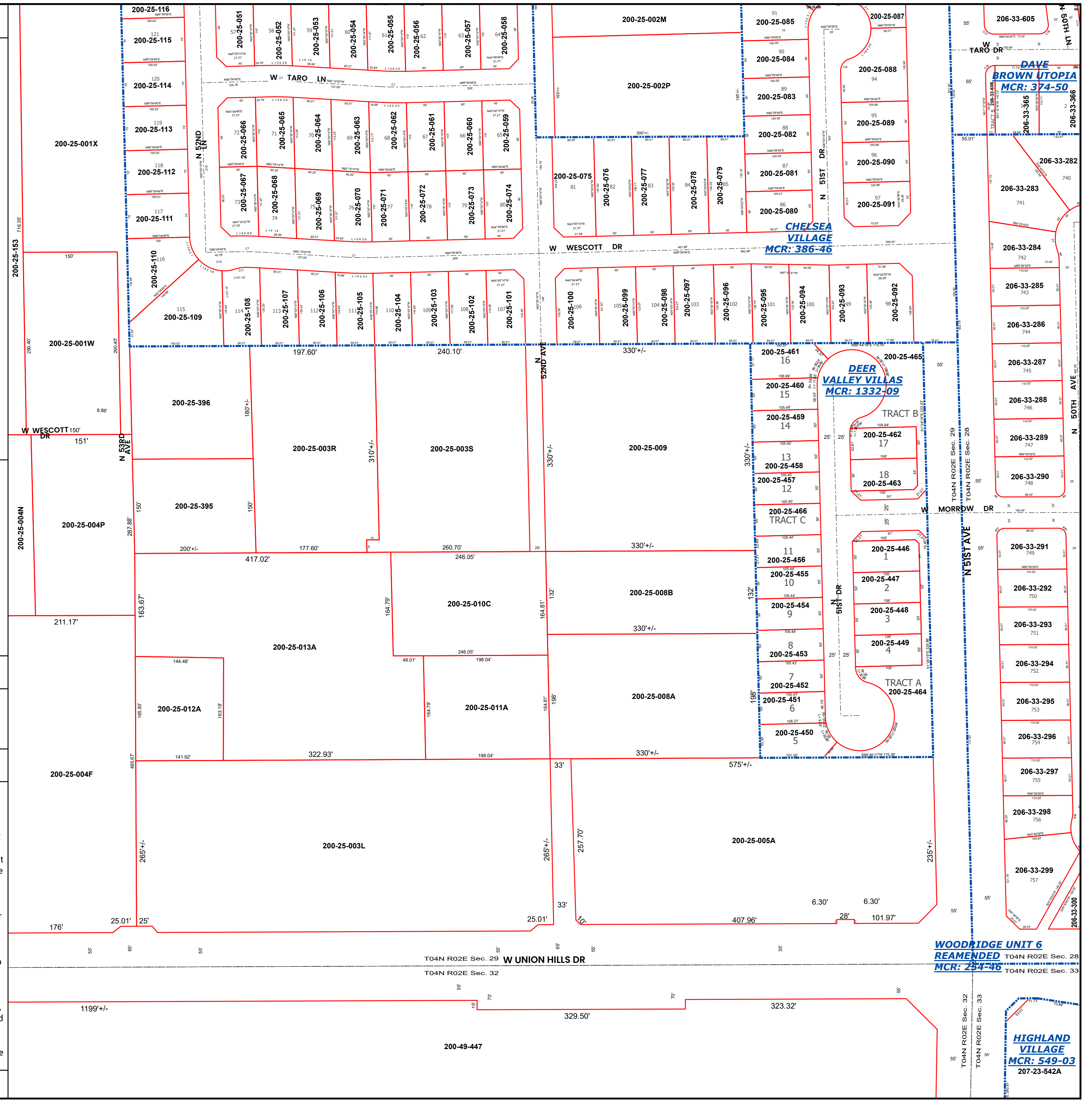
LEGEND: Tax Parcels, Sections, Subdivisions, Lots, Section Corners, Centerlines

Disclaimer - Indemnification CAUTION! USERS SHOULD INDEPENDENTLY RESEARCH AND VERIFY INFORMATION WITHIN THIS DATASET OR MAP BEFORE RELYING ON IT.

The Assessor's Office has compiled information within this dataset or map that it uses to identify, classify, and value real and personal property.

The Assessor does not guarantee that any information contained within this dataset or map is accurate, complete or current.

Map Reprint Date: 2/19/2026



WOODRIDGE UNIT 6 REAMENDED MCR: 284-26

HIGHLAND VILLAGE MCR: 549-03