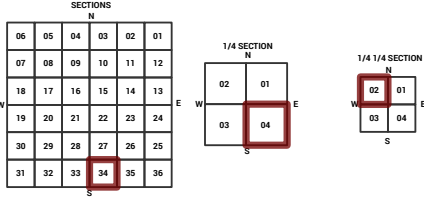
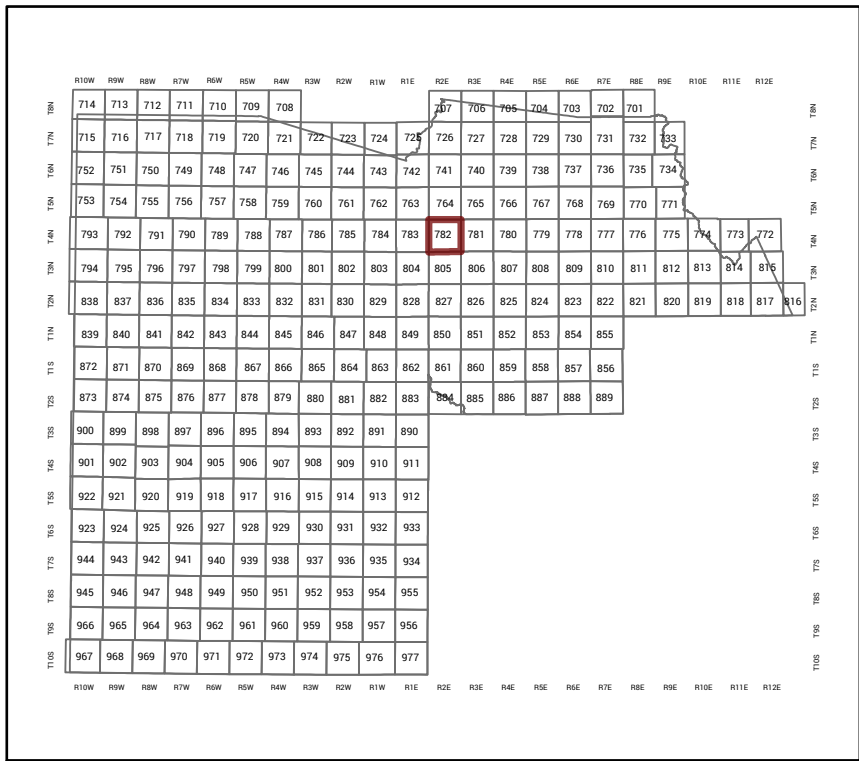


MARICOPA COUNTY
STATE OF ARIZONA

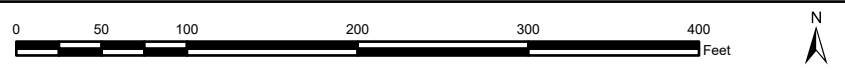
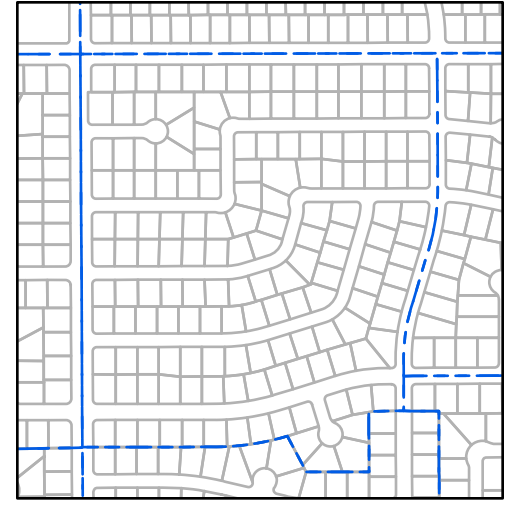
PT. SECTION 34 T04N R02E

782 - 34 - 04 - 02

TOWNSHIP & RANGE SECTION 1/4 SECTION 1/4 1/4 SECTION



Parcels updated within this map



MARICOPA COUNTY
ASSESSOR'S OFFICE
301 W. Jefferson Street
Phoenix, AZ 85003



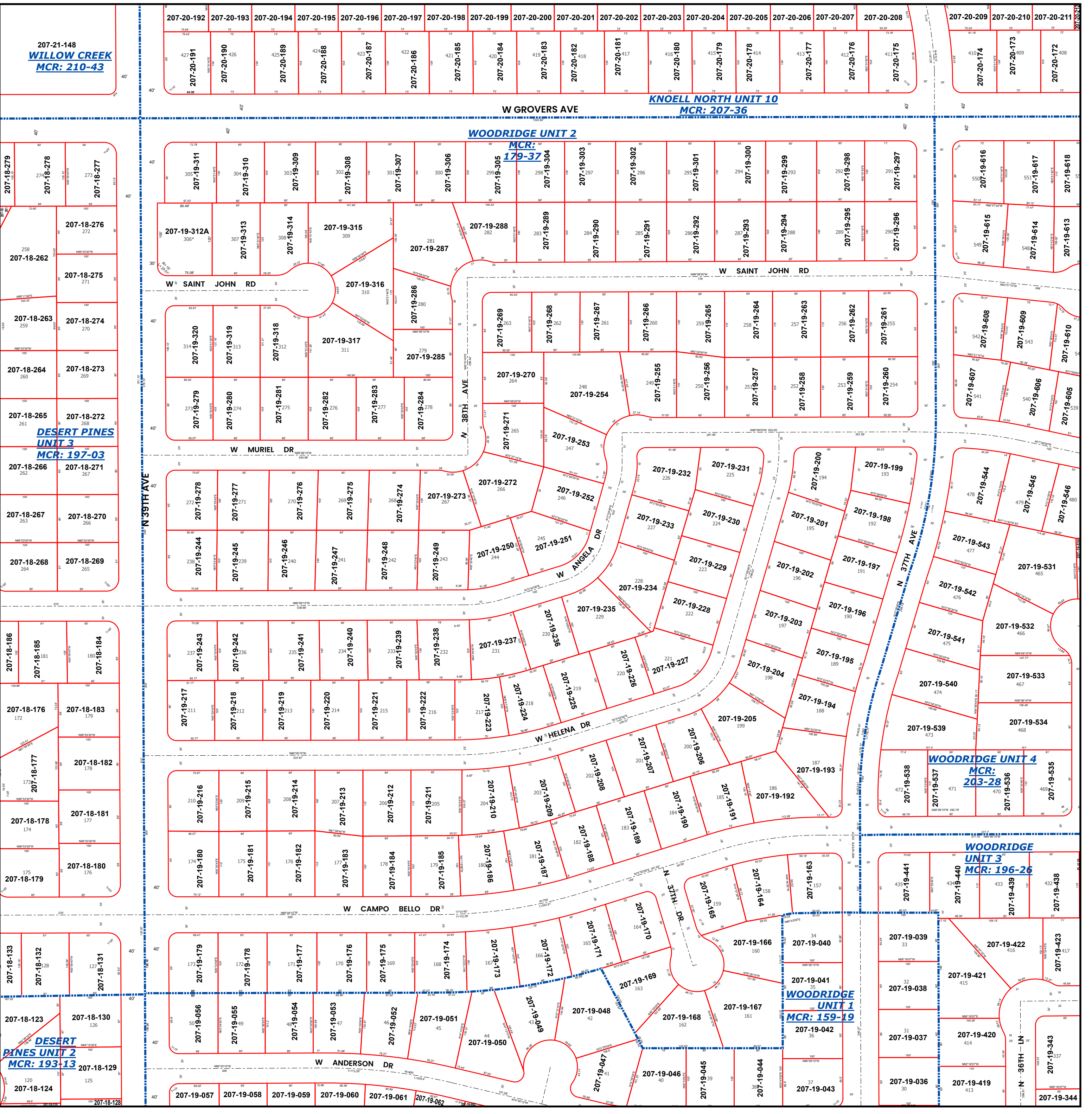
LEGEND: Tax Parcels (red outline), Sections (dotted outline), Subdivisions (dashed outline), Lots (thin red outline), Section Corners (circle with cross), Centerlines (dashed line)

Disclaimer - Indemnification
CAUTION! USERS SHOULD INDEPENDENTLY RESEARCH AND VERIFY INFORMATION WITHIN THIS DATASET OR MAP BEFORE RELYING ON IT.

The Assessor's Office has compiled information within this dataset or map that it uses to identify, classify, and value real and personal property. Please contact the Assessor's Office at 602 506-3406 if you believe any information is incomplete, out of date, or incorrect so that appropriate corrections can be addressed. Please note that a statutory process is also available to correct errors pursuant to Arizona Revised Statutes 42-16254.

The Assessor does not guarantee that any information contained within this dataset or map is accurate, complete or current. In many instances, the Assessor has gathered information from independent sources and made it available within this dataset or map, and the original information may have contained errors and omissions. Errors and omissions may have occurred in the process of gathering, interpreting, and reporting the information. Information within this dataset or map is not updated "real time." In addition, Users are cautioned that the process used within this dataset or map to illustrate the boundaries of adjacent parcels is not always consistent with the recorded documents for such parcels. The parcel boundaries depicted within this dataset or maps are for illustrative purposes only, and the exact relationship of adjacent parcels should be independently researched and verified. The information provided within this dataset or map is not the equivalent of a title report or a real estate survey. Users should independently research, investigate, and verify all information before relying on it or using it in the preparation of legal documents.

Map Reprint Date: 2/19/2026



207-21-148
WILLOW CREEK
MCR: 210-43

207-18-279
207-18-278
207-18-277

207-18-276
207-18-262

207-18-275
207-18-274
207-18-263

207-18-264
207-18-273
207-18-265

207-18-272
DESERT PINES UNIT 3
MCR: 197-03

207-18-266
207-18-270
207-18-267

207-18-268
207-18-269

207-18-186
207-18-185
207-18-184

207-18-176
207-18-183
207-18-177

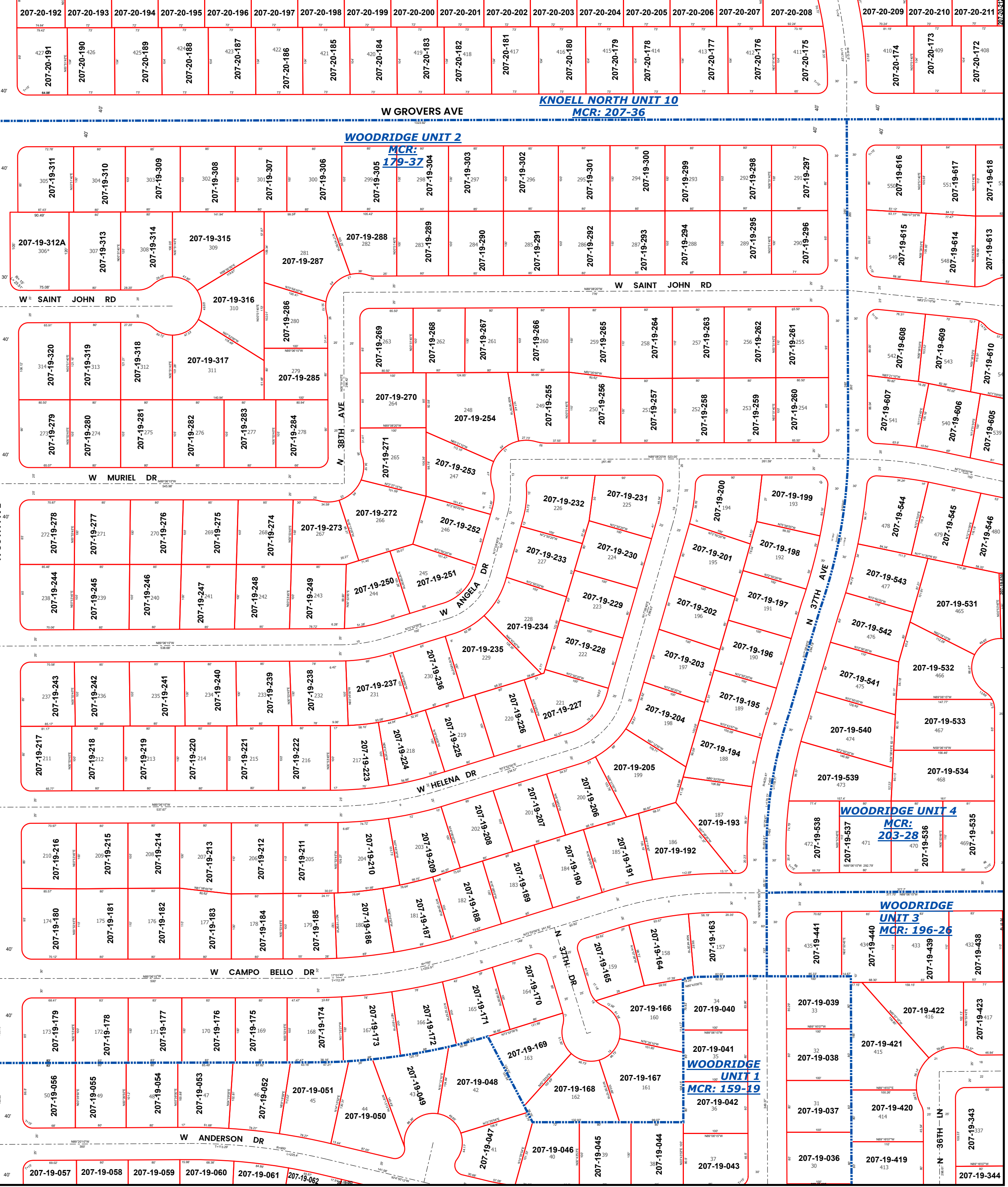
207-18-182
207-18-181
207-18-178

207-18-180
207-18-179

207-18-133
207-18-132
207-18-131

207-18-123
207-18-130
DESERT PINES UNIT 2
MCR: 193-13

207-18-124



207-20-192 207-20-193 207-20-194 207-20-195 207-20-196 207-20-197 207-20-198 207-20-199 207-20-200 207-20-201 207-20-202 207-20-203 207-20-204 207-20-205 207-20-206 207-20-207 207-20-208 207-20-209 207-20-210 207-20-211

207-20-191 207-20-190 207-20-189 207-20-188 207-20-187 207-20-186 207-20-185 207-20-184 207-20-183 207-20-182 207-20-181 207-20-180 207-20-179 207-20-178 207-20-177 207-20-176 207-20-175 207-20-174 207-20-173 207-20-172 207-20-171

207-19-311 207-19-310 207-19-309 207-19-308 207-19-307 207-19-306 207-19-305 207-19-304 207-19-303 207-19-302 207-19-301 207-19-300 207-19-299 207-19-298 207-19-297

207-19-312A 207-19-313 207-19-314 207-19-315 207-19-288 207-19-287 207-19-286 207-19-285 207-19-284 207-19-283 207-19-282 207-19-281 207-19-280 207-19-279 207-19-278 207-19-277 207-19-276 207-19-275 207-19-274 207-19-273 207-19-272 207-19-271 207-19-270 207-19-269 207-19-268 207-19-267 207-19-266 207-19-265 207-19-264 207-19-263 207-19-262 207-19-261 207-19-260 207-19-259 207-19-258 207-19-257 207-19-256 207-19-255 207-19-254 207-19-253 207-19-252 207-19-251 207-19-250 207-19-249 207-19-248 207-19-247 207-19-246 207-19-245 207-19-244 207-19-243 207-19-242 207-19-241 207-19-240 207-19-239 207-19-238 207-19-237 207-19-236 207-19-235 207-19-234 207-19-233 207-19-232 207-19-231 207-19-230 207-19-229 207-19-228 207-19-227 207-19-226 207-19-225 207-19-224 207-19-223 207-19-222 207-19-221 207-19-220 207-19-219 207-19-218 207-19-217 207-19-216 207-19-215 207-19-214 207-19-213 207-19-212 207-19-211 207-19-210 207-19-209 207-19-208 207-19-207 207-19-206 207-19-205 207-19-204 207-19-203 207-19-202 207-19-201 207-19-200 207-19-199 207-19-198 207-19-197 207-19-196 207-19-195 207-19-194 207-19-193 207-19-192 207-19-191 207-19-190 207-19-189 207-19-188 207-19-187 207-19-186 207-19-185 207-19-184 207-19-183 207-19-182 207-19-181 207-19-180 207-19-179 207-19-178 207-19-177 207-19-176 207-19-175 207-19-174 207-19-173 207-19-172 207-19-171 207-19-170 207-19-169 207-19-168 207-19-167 207-19-166 207-19-165 207-19-164 207-19-163 207-19-162 207-19-161 207-19-160 207-19-159 207-19-158 207-19-157 207-19-156 207-19-155 207-19-154 207-19-153 207-19-152 207-19-151 207-19-150 207-19-149 207-19-148 207-19-147 207-19-146 207-19-145 207-19-144 207-19-143 207-19-142 207-19-141 207-19-140 207-19-139 207-19-138 207-19-137 207-19-136 207-19-135 207-19-134 207-19-133 207-19-132 207-19-131 207-19-130 207-19-129 207-19-128 207-19-127 207-19-126 207-19-125 207-19-124 207-19-123 207-19-122 207-19-121 207-19-120 207-19-119 207-19-118 207-19-117 207-19-116 207-19-115 207-19-114 207-19-113 207-19-112 207-19-111 207-19-110 207-19-109 207-19-108 207-19-107 207-19-106 207-19-105 207-19-104 207-19-103 207-19-102 207-19-101 207-19-100 207-19-99 207-19-98 207-19-97 207-19-96 207-19-95 207-19-94 207-19-93 207-19-92 207-19-91 207-19-90 207-19-89 207-19-88 207-19-87 207-19-86 207-19-85 207-19-84 207-19-83 207-19-82 207-19-81 207-19-80 207-19-79 207-19-78 207-19-77 207-19-76 207-19-75 207-19-74 207-19-73 207-19-72 207-19-71 207-19-70 207-19-69 207-19-68 207-19-67 207-19-66 207-19-65 207-19-64 207-19-63 207-19-62 207-19-61 207-19-60 207-19-59 207-19-58 207-19-57 207-19-56 207-19-55 207-19-54 207-19-53 207-19-52 207-19-51 207-19-50 207-19-49 207-19-48 207-19-47 207-19-46 207-19-45 207-19-44 207-19-43 207-19-42 207-19-41 207-19-40 207-19-39 207-19-38 207-19-37 207-19-36 207-19-35 207-19-34 207-19-33 207-19-32 207-19-31 207-19-30 207-19-29 207-19-28 207-19-27 207-19-26 207-19-25 207-19-24 207-19-23 207-19-22 207-19-21 207-19-20 207-19-19 207-19-18 207-19-17 207-19-16 207-19-15 207-19-14 207-19-13 207-19-12 207-19-11 207-19-10 207-19-9 207-19-8 207-19-7 207-19-6 207-19-5 207-19-4 207-19-3 207-19-2 207-19-1 207-19-0

207-19-057 207-19-058 207-19-059 207-19-060 207-19-061 207-19-062