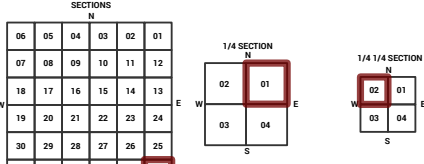
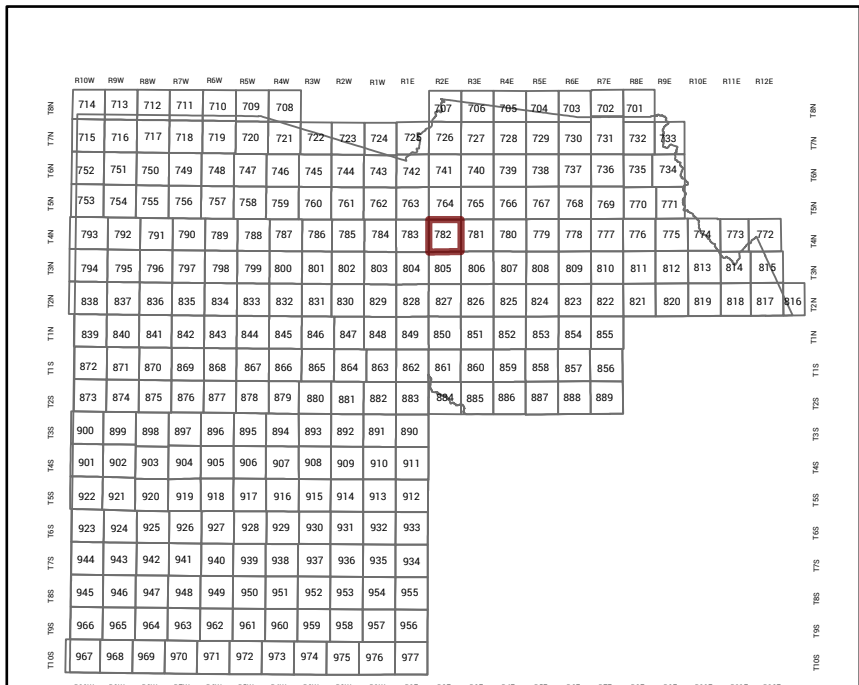


MARICOPA COUNTY STATE OF ARIZONA

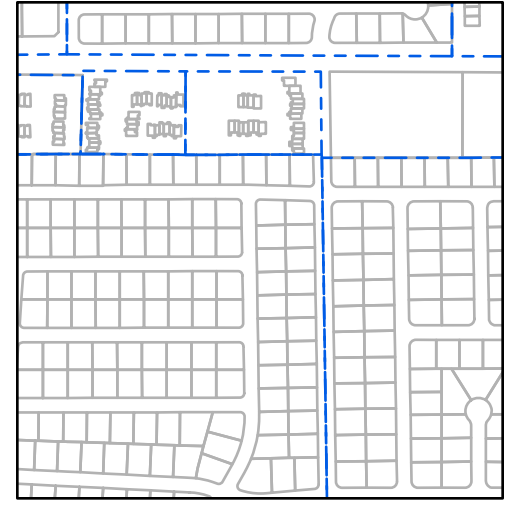
PT. SECTION 36 T04N R02E

782 - 36 - 01 - 02

TOWNSHIP & RANGE SECTION 1/4 SECTION 1/4 1/4 SECTION



Parcels updated within this map



MARICOPA COUNTY ASSESSOR'S OFFICE 301 W. Jefferson Street Phoenix, AZ 85003

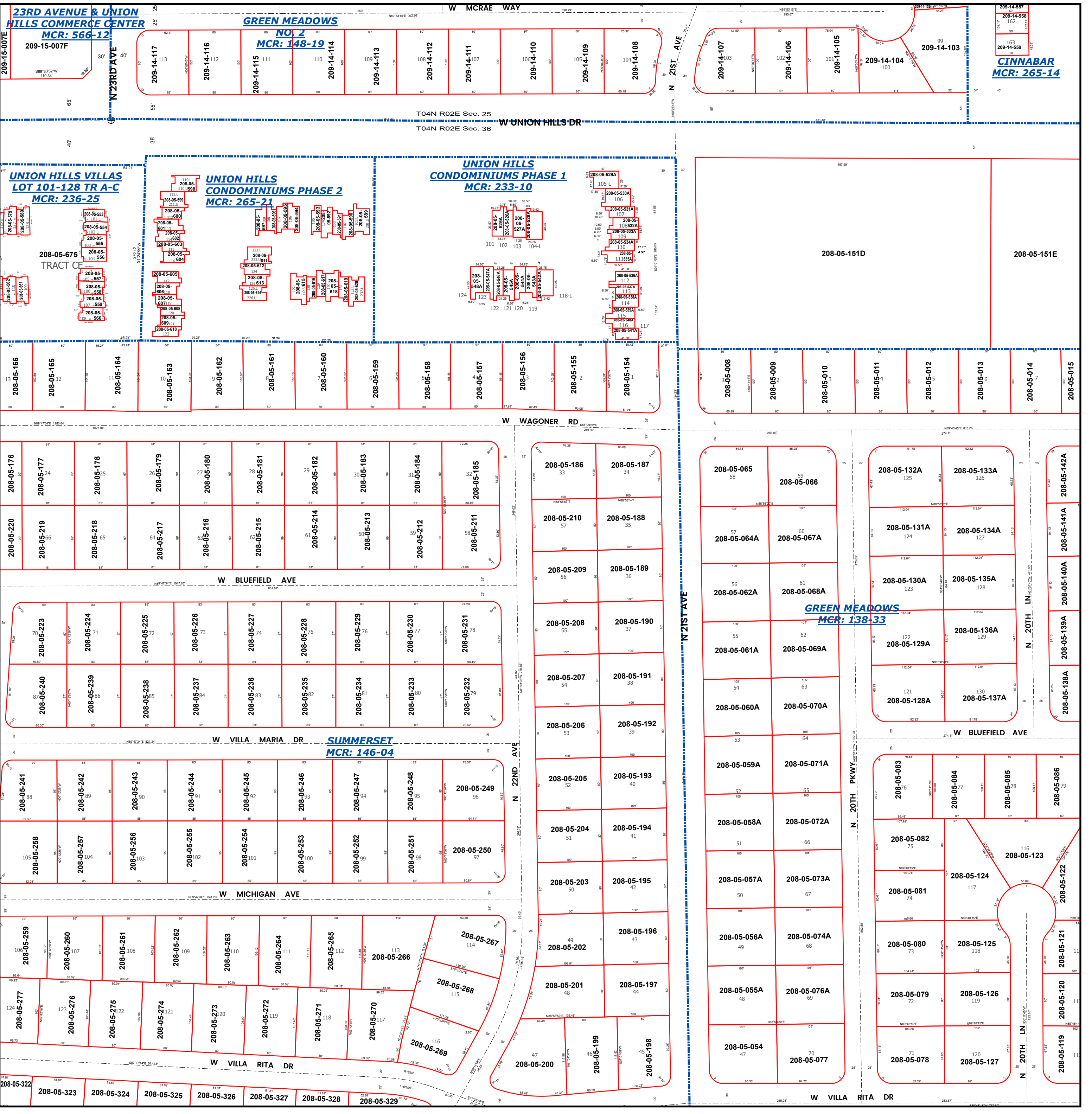


LEGEND: Tax Parcels, Sections, Subdivisions, Lots, Section Corners, Centerlines

Disclaimer - Indemnification CAUTION! USERS SHOULD INDEPENDENTLY RESEARCH AND VERIFY INFORMATION WITHIN THIS DATASET OR MAP BEFORE RELYING ON IT.

The Assessor's Office has compiled information within this dataset or map that it uses to identify, classify, and value real and personal property. Please contact the Assessor's Office at 602 506-3406 if you believe any information is incomplete, out of date, or incorrect so that appropriate corrections can be addressed.

The Assessor does not guarantee that any information contained within this dataset or map is accurate, complete or current. In many instances, the Assessor has gathered information from independent sources and made it available within this dataset or map, and the original information may have contained errors and omissions.



209-14-551 209-14-552 209-14-553 209-14-554 209-14-555 209-14-556 209-14-557 209-14-558 209-14-559 209-14-560 209-14-561 209-14-562 209-14-563 209-14-564 209-14-565 209-14-566 209-14-567 209-14-568 209-14-569 209-14-570 209-14-571 209-14-572 209-14-573 209-14-574 209-14-575 209-14-576 209-14-577 209-14-578 209-14-579 209-14-580 209-14-581 209-14-582 209-14-583 209-14-584 209-14-585 209-14-586 209-14-587 209-14-588 209-14-589 209-14-590 209-14-591 209-14-592 209-14-593 209-14-594 209-14-595 209-14-596 209-14-597 209-14-598 209-14-599 209-14-600

Map Reprint Date: 2/19/2026