

MARICOPA COUNTY

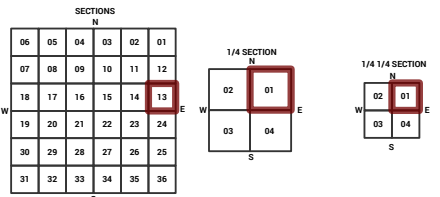
STATE OF ARIZONA

PT. SECTION 13 T04N R01E

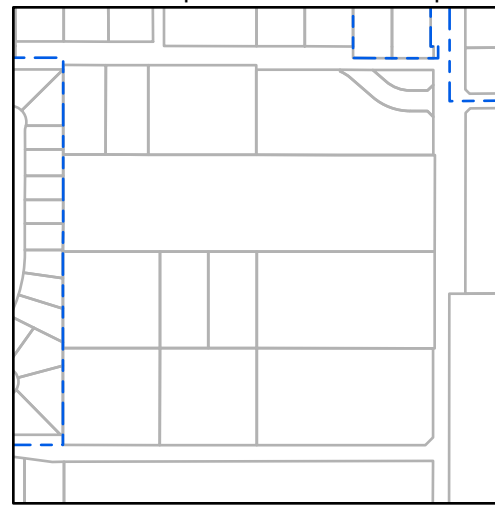
783 - 13 - 01 - 01

TOWNSHIP & RANGE SECTION 1/4 SECTION 1/4 SECTION

714	713	712	711	710	709	708					
715	716	717	718	719	720	721	722	723	724	725	726
752	751	750	749	748	747	746	745	744	743	742	741
753	754	755	756	757	758	759	760	761	762	763	764
793	792	791	790	789	788	787	786	785	784	783	782
794	795	796	797	798	799	800	801	802	803	804	805
838	837	836	835	834	833	832	831	830	829	828	827
839	840	841	842	843	844	845	846	847	848	849	850
872	871	870	869	868	867	866	865	864	863	862	861
873	874	875	876	877	878	879	880	881	882	883	884
900	899	898	897	896	895	894	893	892	891	890	
901	902	903	904	905	906	907	908	909	910	911	
922	921	920	919	918	917	916	915	914	913	912	
923	924	925	926	927	928	929	930	931	932	933	
944	943	942	941	940	939	938	937	936	935	934	
945	946	947	948	949	950	951	952	953	954	955	
964	965	966	967	968	969	970	971	972	973	974	
967	968	969	970	971	972	973	974	975	976	977	



Parcels updated within this map



MARICOPA COUNTY
ASSESSOR'S OFFICE
301 W. Jefferson Street
Phoenix, AZ 85003



LEGEND: Tax Parcels Sections Subdivisions
Lots Section Corners Centerlines

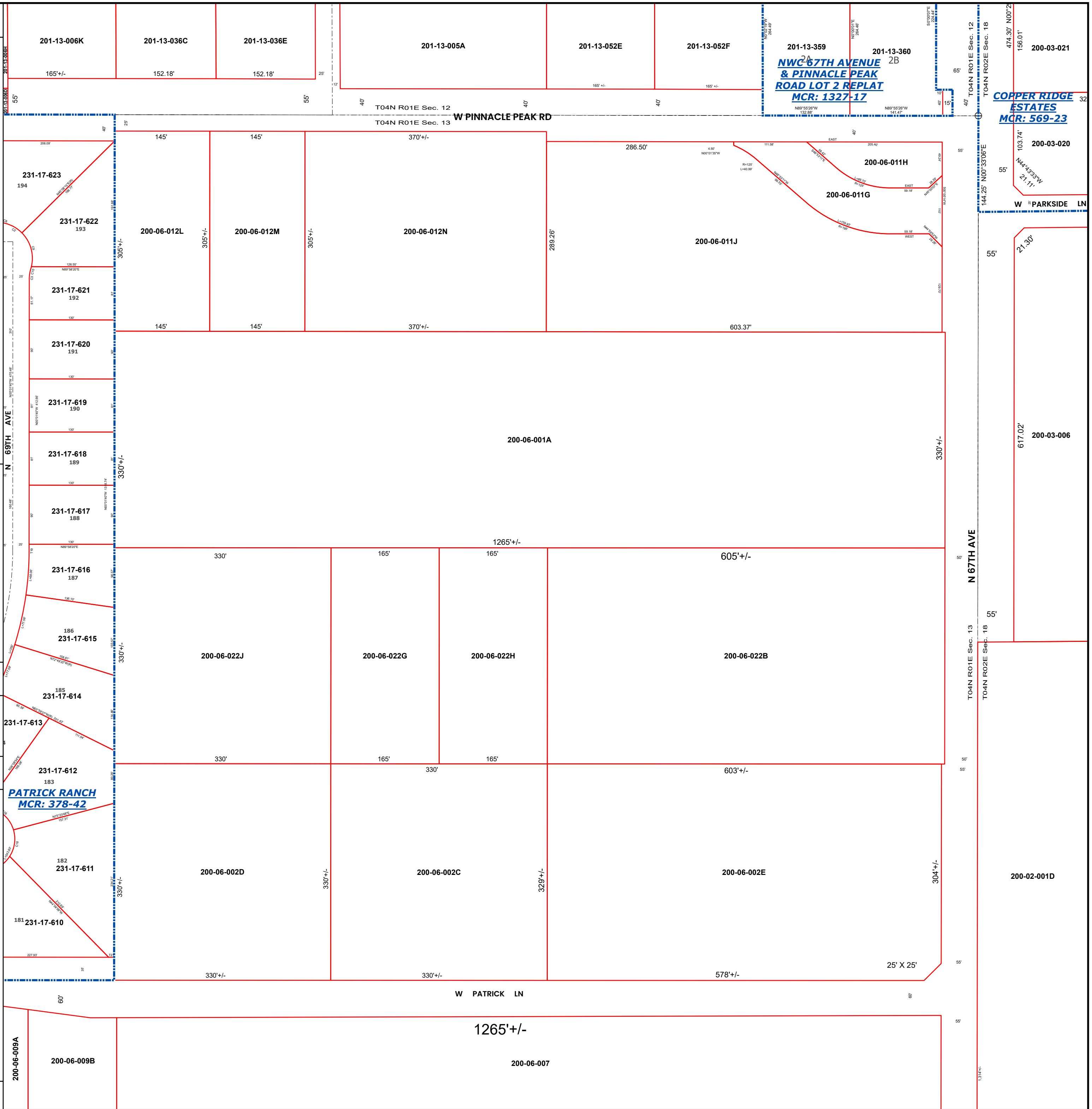
Disclaimer - Indemnification

CAUTION! USERS SHOULD INDEPENDENTLY RESEARCH AND VERIFY INFORMATION WITHIN THIS DATASET OR MAP BEFORE RELYING ON IT.

The Assessor's Office has compiled information within this dataset or map that it uses to identify, classify, and value real and personal property. Please contact the Assessor's Office at 602 506-3406 if you believe any information is incomplete, out of date, or incorrect so that appropriate corrections can be addressed. Please note that a statutory process is also available to correct errors pursuant to Arizona Revised Statutes 42-16254.

The Assessor does not guarantee that any information contained within this dataset or map is accurate, complete or current. In many instances, the Assessor has gathered information from independent sources and made it available within this dataset or map, and the original information may have contained errors and omissions. Errors and omissions may have occurred in the process of gathering, interpreting, and reporting the information. Information within this dataset or map is not updated "real time." In addition, Users are cautioned that the process used within this dataset or map to illustrate the boundaries of adjacent parcels is not always consistent with the recorded documents for such parcels. The parcel boundaries depicted within this dataset or maps are for illustrative purposes only, and the exact relationship of adjacent parcels should be independently researched and verified. The information provided within this dataset or map is not the equivalent of a title report or a real estate survey. Users should independently research, investigate, and verify all information before relying on it or using it in the preparation of legal documents.

Map Reprint Date: 2/19/2026



13144C