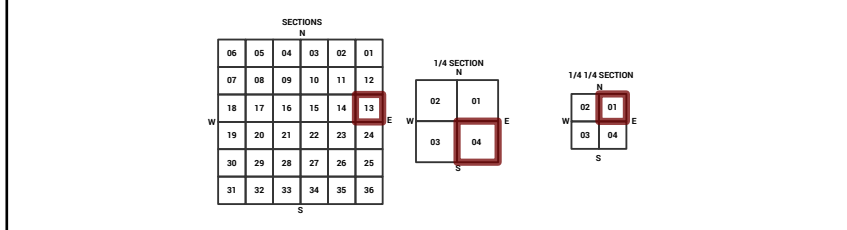
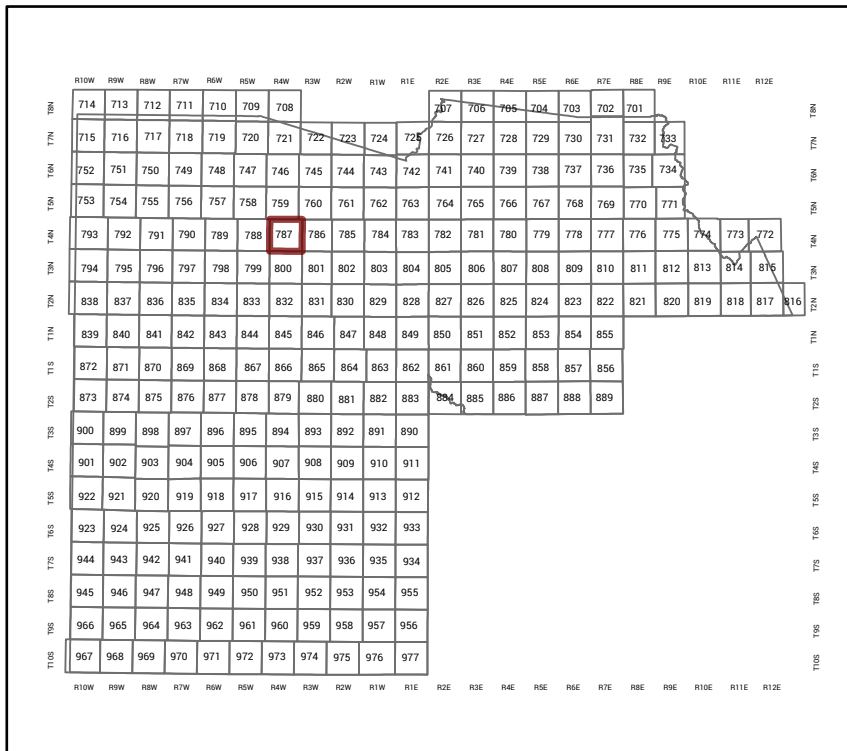


MARICOPA COUNTY
STATE OF ARIZONA

PT. SECTION 13 T04N R04W

787 - 13 - 04 - 01

TOWNSHIP & RANGE SECTION 1/4 SECTION 1/4 1/4 SECTION



Parcels updated within this map



MARICOPA COUNTY
ASSESSOR'S OFFICE
301 W. Jefferson Street
Phoenix, AZ 85003



LEGEND: Tax Parcels (red outline), Sections (black outline), Subdivisions (blue outline), Lots (white fill), Section Corners (circle with cross), Centerlines (dashed line)

Disclaimer - Indemnification

CAUTION! USERS SHOULD INDEPENDENTLY RESEARCH AND VERIFY INFORMATION WITHIN THIS DATASET OR MAP BEFORE RELYING ON IT.

The Assessor's Office has compiled information within this dataset or map that it uses to identify, classify, and value real and personal property. Please contact the Assessor's Office at 602 506-3406 if you believe any information is incomplete, out of date, or incorrect so that appropriate corrections can be addressed. Please note that a statutory process is also available to correct errors pursuant to Arizona Revised Statutes 42-16254.

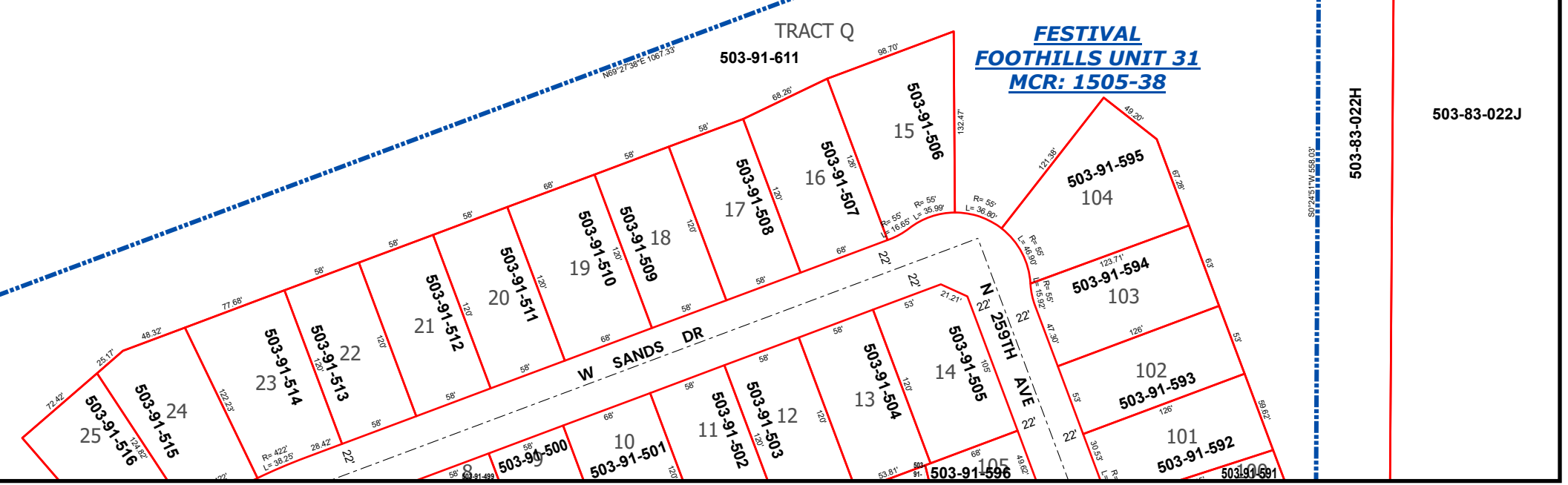
The Assessor does not guarantee that any information contained within this dataset or map is accurate, complete or current. In many instances, the Assessor has gathered information from independent sources and made it available within this dataset or map, and the original information may have contained errors and omissions. Errors and omissions may have occurred in the process of gathering, interpreting, and reporting the information. Information within this dataset or map is not updated "real time." In addition, Users are cautioned that the process used within this dataset or map to illustrate the boundaries of adjacent parcels is not always consistent with the recorded documents for such parcels. The parcel boundaries depicted within this dataset or maps are for illustrative purposes only, and the exact relationship of adjacent parcels should be independently researched and verified. The information provided within this dataset or map is not the equivalent of a title report or a real estate survey. Users should independently research, investigate, and verify all information before relying on it or using it in the preparation of legal documents.

Map Reprint Date: 2/20/2026

829' +/-

503-84-048C

464.53' 503-84-061D



5280' +/-

503-83-022D

20' 20'

503-83-022L

503-83-022L

503-84-048C

503-83-022F

503-83-022G

503-83-022J

503-83-022K

503-83-022L

503-83-022M

503-83-022N

503-83-022O

503-83-022P

503-83-022Q

503-83-022R

503-83-022S

503-83-022T

503-83-022U

503-83-022V

503-83-022W

503-83-022X

503-83-022Y

503-83-022Z

503-83-022A

503-83-022B

503-83-022C

503-83-022D

503-83-022E

503-83-022F

503-83-022G

503-83-022H

503-83-022I

503-83-022J

503-83-022K

503-83-022L

503-83-022M

503-83-022N

503-83-022O

503-83-022P

503-83-022Q

503-83-022R

503-83-022S

503-83-022T