

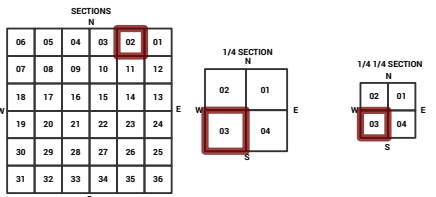
MARICOPA COUNTY
STATE OF ARIZONA

PT. SECTION 2 T03N R02W

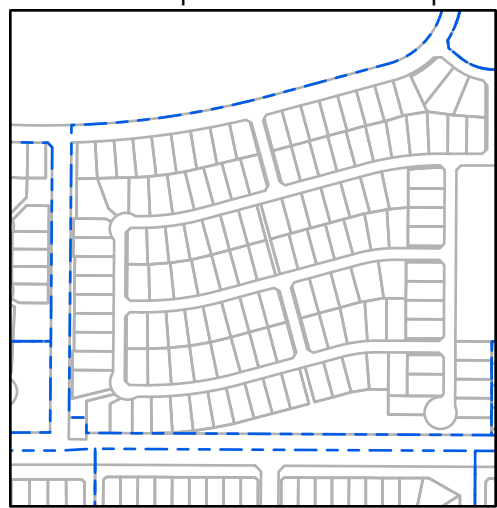
802 - 02 - 03 - 03

TOWNSHIP & RANGE SECTION 1/4 SECTION 1/4 1/4 SECTION

Grid map showing section numbers from 714 to 909.



Parcels updated within this map



MARICOPA COUNTY
ASSESSOR'S OFFICE
301 W. Jefferson Street
Phoenix, AZ 85003



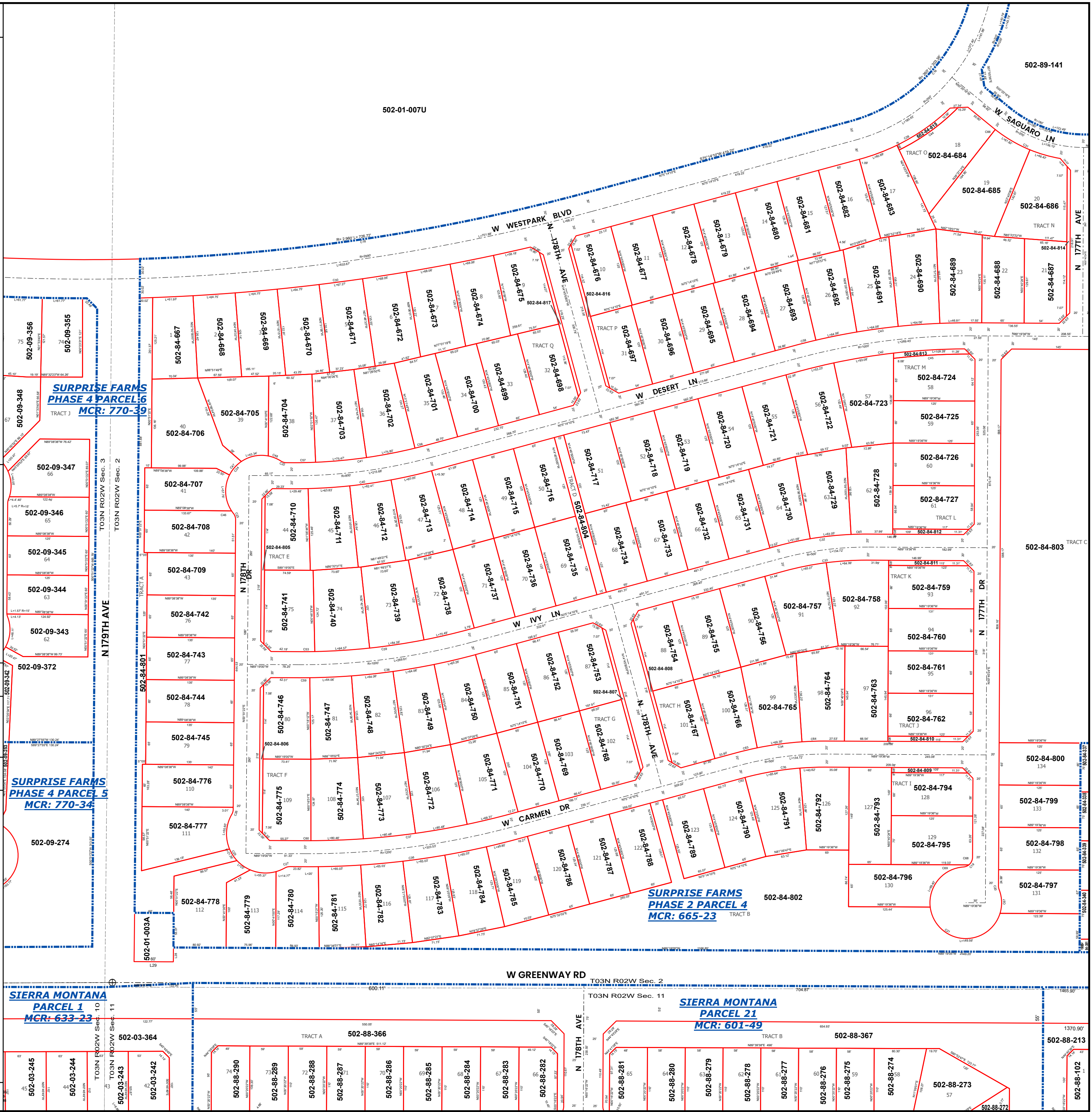
- LEGEND: Tax Parcels, Sections, Subdivisions, Lots, Section Corners, Centerlines

Disclaimer - Indemnification
CAUTION! USERS SHOULD INDEPENDENTLY RESEARCH AND VERIFY
INFORMATION WITHIN THIS DATASET OR MAP BEFORE RELYING ON IT.

The Assessor's Office has compiled information within this dataset or map that it uses to identify, classify, and value real and personal property. Please contact the Assessor's Office at 602 506-3406 if you believe any information is incomplete, out of date, or incorrect so that appropriate corrections can be addressed. Please note that a statutory process is also available to correct errors pursuant to Arizona Revised Statutes 42-16254.

The Assessor does not guarantee that any information contained within this dataset or map is accurate, complete or current. In many instances, the Assessor has gathered information from independent sources and made it available within this dataset or map, and the original information may have contained errors and omissions. Errors and omissions may have occurred in the process of gathering, interpreting, and reporting the information. Information within this dataset or map is not updated "real time." In addition, Users are cautioned that the process used within this dataset or map to illustrate the boundaries of adjacent parcels is not always consistent with the recorded documents for such parcels. The parcel boundaries depicted within this dataset or maps are for illustrative purposes only, and the exact relationship of adjacent parcels should be independently researched and verified. The information provided within this dataset or map is not the equivalent of a title report or a real estate survey. Users should independently research, investigate, and verify all information before relying on it or using it in the preparation of legal documents.

Map Reprint Date: 2/21/2026



502-89-141

502-01-007U

SURPRISE FARMS
PHASE 4 PARCEL 6
MCR: 770-39

SURPRISE FARMS
PHASE 4 PARCEL 5
MCR: 770-34

SURPRISE FARMS
PHASE 2 PARCEL 4
MCR: 665-23

SIERRA MONTANA
PARCEL 1
MCR: 633-23

SIERRA MONTANA
PARCEL 21
MCR: 601-49

502-84-803

502-84-800

502-84-799

502-84-798

502-84-797

502-88-213

502-88-102

502-88-272

502-03-364

502-03-245

502-03-244

502-03-243

502-03-242

502-88-290

502-88-289

502-88-288

502-88-287

502-88-286

502-88-285

502-88-284

502-88-283

502-88-282

502-88-281

502-88-280

502-88-279

502-88-278

502-88-277

502-88-276

502-88-275

502-88-274

502-88-273

502-88-272

502-88-271

502-88-270

502-88-269

502-88-268

502-88-267

502-88-266

502-88-265

502-88-264

502-88-263

502-88-262

502-88-261