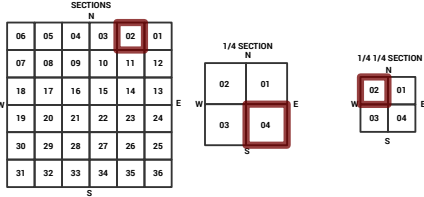
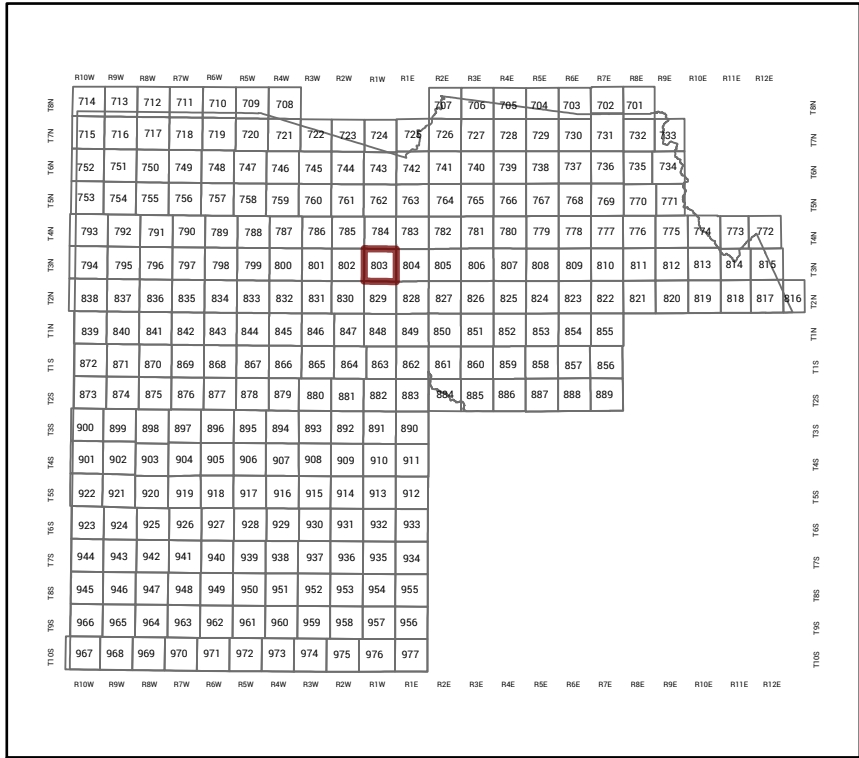


MARICOPA COUNTY
STATE OF ARIZONA

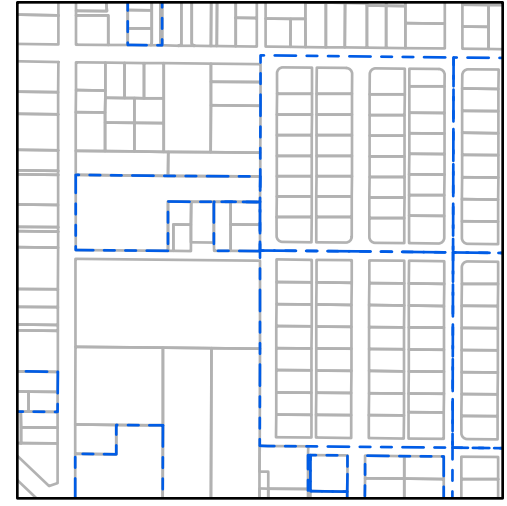
PT. SECTION 2 T03N R01W

803 - 02 - 04 - 02

TOWNSHIP & RANGE SECTION 1/4 SECTION 1/4 SECTION



Parcels updated within this map



MARICOPA COUNTY
ASSESSOR'S OFFICE
301 W. Jefferson Street
Phoenix, AZ 85003
<https://mcaassessor.maricopa.gov>

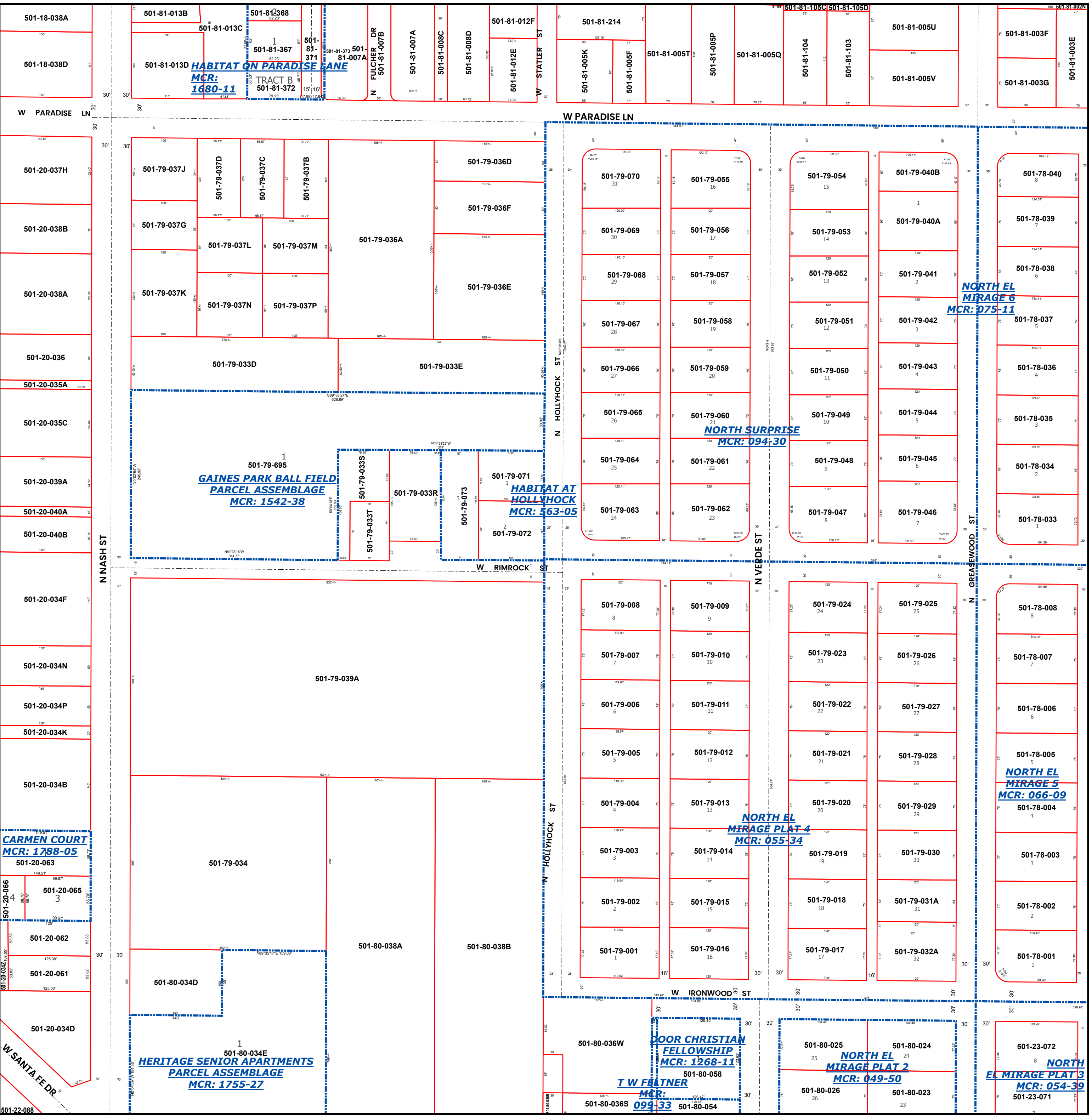
LEGEND: Tax Parcels, Sections, Subdivisions, Lots, Section Corners, Centerlines

Disclaimer - Indemnification
CAUTION! USERS SHOULD INDEPENDENTLY RESEARCH AND VERIFY INFORMATION WITHIN THIS DATASET OR MAP BEFORE RELYING ON IT.

The Assessor's Office has compiled information within this dataset or map that it uses to identify, classify, and value real and personal property. Please contact the Assessor's Office at 602 506-3406 if you believe any information is incomplete, out of date, or incorrect so that appropriate corrections can be addressed. Please note that a statutory process is also available to correct errors pursuant to Arizona Revised Statutes 42-16254.

The Assessor does not guarantee that any information contained within this dataset or map is accurate, complete or current. In many instances, the Assessor has gathered information from independent sources and made it available within this dataset or map, and the original information may have contained errors and omissions. Errors and omissions may have occurred in the process of gathering, interpreting, and reporting the information. Information within this dataset or map is not updated "real time." In addition, Users are cautioned that the process used within this dataset or map to illustrate the boundaries of adjacent parcels is not always consistent with the recorded documents for such parcels. The parcel boundaries depicted within this dataset or maps are for illustrative purposes only, and the exact relationship of adjacent parcels should be independently researched and verified. The information provided within this dataset or map is not the equivalent of a title report or a real estate survey. Users should independently research, investigate, and verify all information before relying on it or using it in the preparation of legal documents.

Map Reprint Date: 2/21/2026



501-81-013B
501-81-013C
501-81-367
501-81-371
501-81-372
HABITAT ON PARADISE LANE
MCR: 1680-11
TRACT B

501-81-007A
501-81-007B
501-81-007A
501-81-008C
501-81-008D
501-81-012F
501-81-012E
N FULCHER DR
501-81-007B

501-81-214
501-81-005K
501-81-005F
501-81-005T
501-81-005P
501-81-005Q
501-81-104
501-81-103
501-81-105C
501-81-105D

501-81-005U
501-81-005V
501-81-003F
501-81-003G
501-81-003E

501-79-037H
501-79-037J
501-79-037D
501-79-037C
501-79-037B
501-79-036D
501-79-036F
501-79-036E
501-79-037G
501-79-037L
501-79-037M
501-79-036A
501-79-037K
501-79-037N
501-79-037P
501-79-033D
501-79-033E
501-79-033S
501-79-033R
501-79-073
501-79-071
501-79-072
501-79-073
GAINES PARK BALL FIELD
PARCEL ASSEMBLAGE
MCR: 1542-38
HABITAT AT HOLLYHOCK
MCR: 463-05

501-79-070
501-79-069
501-79-068
501-79-067
501-79-066
501-79-065
501-79-064
501-79-063
501-79-055
501-79-056
501-79-057
501-79-058
501-79-059
501-79-060
501-79-061
501-79-062
501-79-054
501-79-053
501-79-052
501-79-049
501-79-048
501-79-047
501-79-040B
501-79-040A
501-79-041
501-79-042
501-79-043
501-79-044
501-79-045
501-79-046
501-78-040
501-78-039
501-78-038
501-78-037
501-78-036
501-78-035
501-78-034
501-78-033

501-79-039A
501-79-034
501-80-038A
501-80-038B
501-80-034D
501-80-034E
HERITAGE SENIOR APARTMENTS
PARCEL ASSEMBLAGE
MCR: 1755-27
CARMEN COURT
MCR: 1788-05
501-20-063
501-20-066
501-20-065
501-20-062
501-20-061
501-20-034D
501-20-034B
501-20-034N
501-20-034P
501-20-034K
501-20-034F
501-20-040A
501-20-040B
501-20-039A
501-20-035A
501-20-035C
501-20-036
501-20-038B
501-20-038A
501-20-037H
501-20-037D
501-20-037C
501-20-037B
501-20-037G
501-20-037L
501-20-037M
501-20-037K
501-20-037N
501-20-037P
501-20-037J
501-20-037I
501-20-037E
501-20-037F
501-20-037A
501-20-037C
501-20-037D
501-20-037E
501-20-037F
501-20-037G
501-20-037H
501-20-037I
501-20-037J
501-20-037K
501-20-037L
501-20-037M
501-20-037N
501-20-037P
501-20-037Q
501-20-037R
501-20-037S
501-20-037T
501-20-037U
501-20-037V
501-20-037W
501-20-037X
501-20-037Y
501-20-037Z

501-79-008
501-79-007
501-79-006
501-79-005
501-79-004
501-79-003
501-79-002
501-79-001
501-79-009
501-79-010
501-79-011
501-79-012
501-79-013
501-79-014
501-79-015
501-79-016
501-79-017
501-79-018
501-79-019
501-79-020
501-79-021
501-79-022
501-79-023
501-79-024
501-79-025
501-79-026
501-79-027
501-79-028
501-79-029
501-79-030
501-79-031A
501-79-032A
501-78-008
501-78-007
501-78-006
501-78-005
501-78-004
501-78-003
501-78-002
501-78-001
501-23-072
501-23-071
NORTH EL MIRAGE 6
MCR: 075-11
NORTH SURPRISE
MCR: 094-30
NORTH EL MIRAGE 5
MCR: 066-09
NORTH EL MIRAGE PLAT 4
MCR: 055-34
DOOR CHRISTIAN FELLOWSHIP
MCR: 1268-11
NORTH EL MIRAGE PLAT 2
MCR: 049-50
NORTH EL MIRAGE PLAT 3
MCR: 054-39
T W FELTNER
MCR: 099-33