

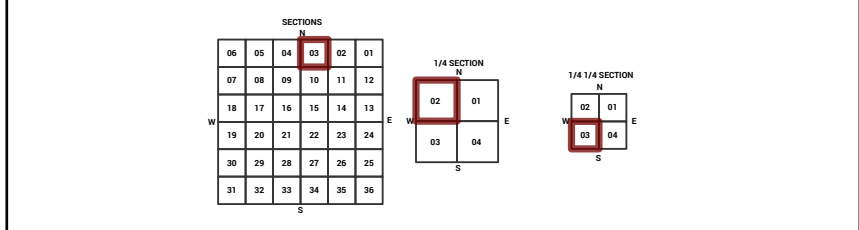
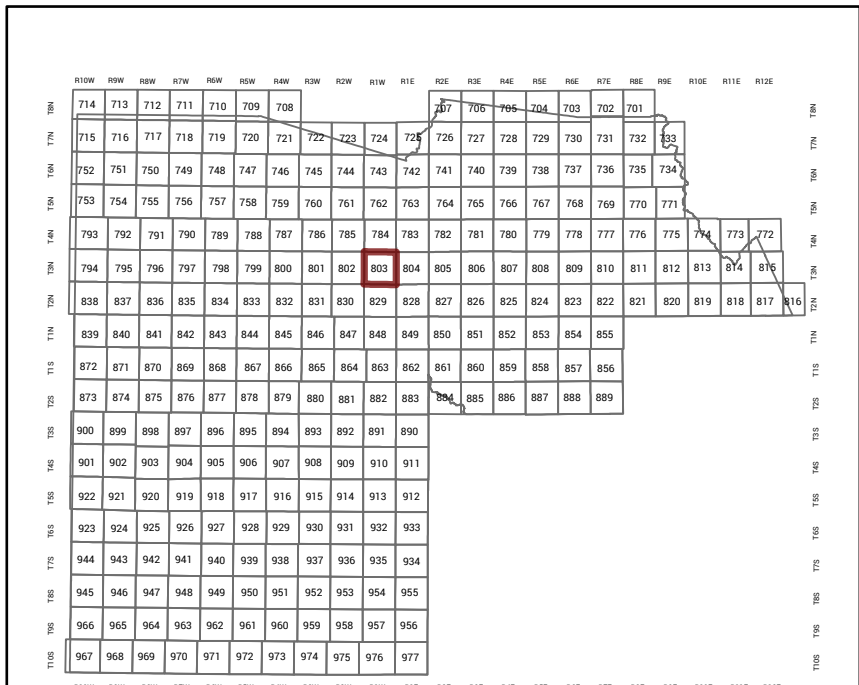
# MARICOPA COUNTY

STATE OF ARIZONA

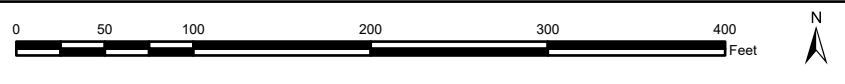
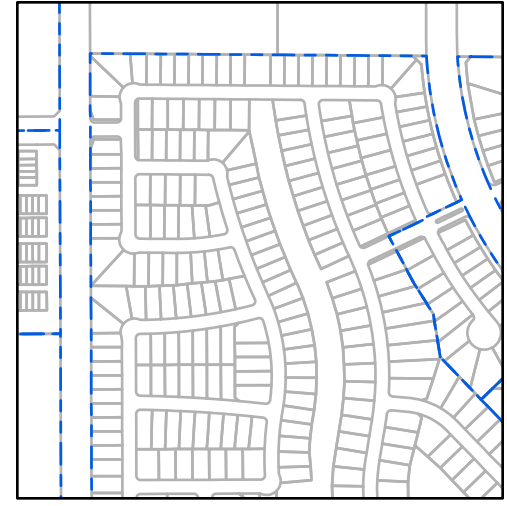
PT. SECTION 3 T03N R01W

## 803 - 03 - 02 - 03

TOWNSHIP & RANGE SECTION 1/4 SECTION 1/4 1/4 SECTION



Parcels updated within this map



MARICOPA COUNTY  
ASSESSOR'S OFFICE  
301 W. Jefferson Street  
Phoenix, AZ 85003



**LEGEND:** Tax Parcels (red outline), Sections (dashed line), Subdivisions (dotted line), Lots (small squares), Section Corners (circle with cross), Centerlines (dashed line)

**Disclaimer - Indemnification**  
CAUTION! USERS SHOULD INDEPENDENTLY RESEARCH AND VERIFY INFORMATION WITHIN THIS DATASET OR MAP BEFORE RELYING ON IT.

The Assessor's Office has compiled information within this dataset or map that it uses to identify, classify, and value real and personal property. Please contact the Assessor's Office at 602 506-3406 if you believe any information is incomplete, out of date, or incorrect so that appropriate corrections can be addressed. Please note that a statutory process is also available to correct errors pursuant to Arizona Revised Statutes 42-16254.

The Assessor does not guarantee that any information contained within this dataset or map is accurate, complete or current. In many instances, the Assessor has gathered information from independent sources and made it available within this dataset or map, and the original information may have contained errors and omissions. Errors and omissions may have occurred in the process of gathering, interpreting, and reporting the information. Information within this dataset or map is not updated "real time." In addition, Users are cautioned that the process used within this dataset or map to illustrate the boundaries of adjacent parcels is not always consistent with the recorded documents for such parcels. The parcel boundaries depicted within this dataset or maps are for illustrative purposes only, and the exact relationship of adjacent parcels should be independently researched and verified. The information provided within this dataset or map is not the equivalent of a title report or a real estate survey. Users should independently research, investigate, and verify all information before relying on it or using it in the preparation of legal documents.

Map Reprint Date: 2/21/2026

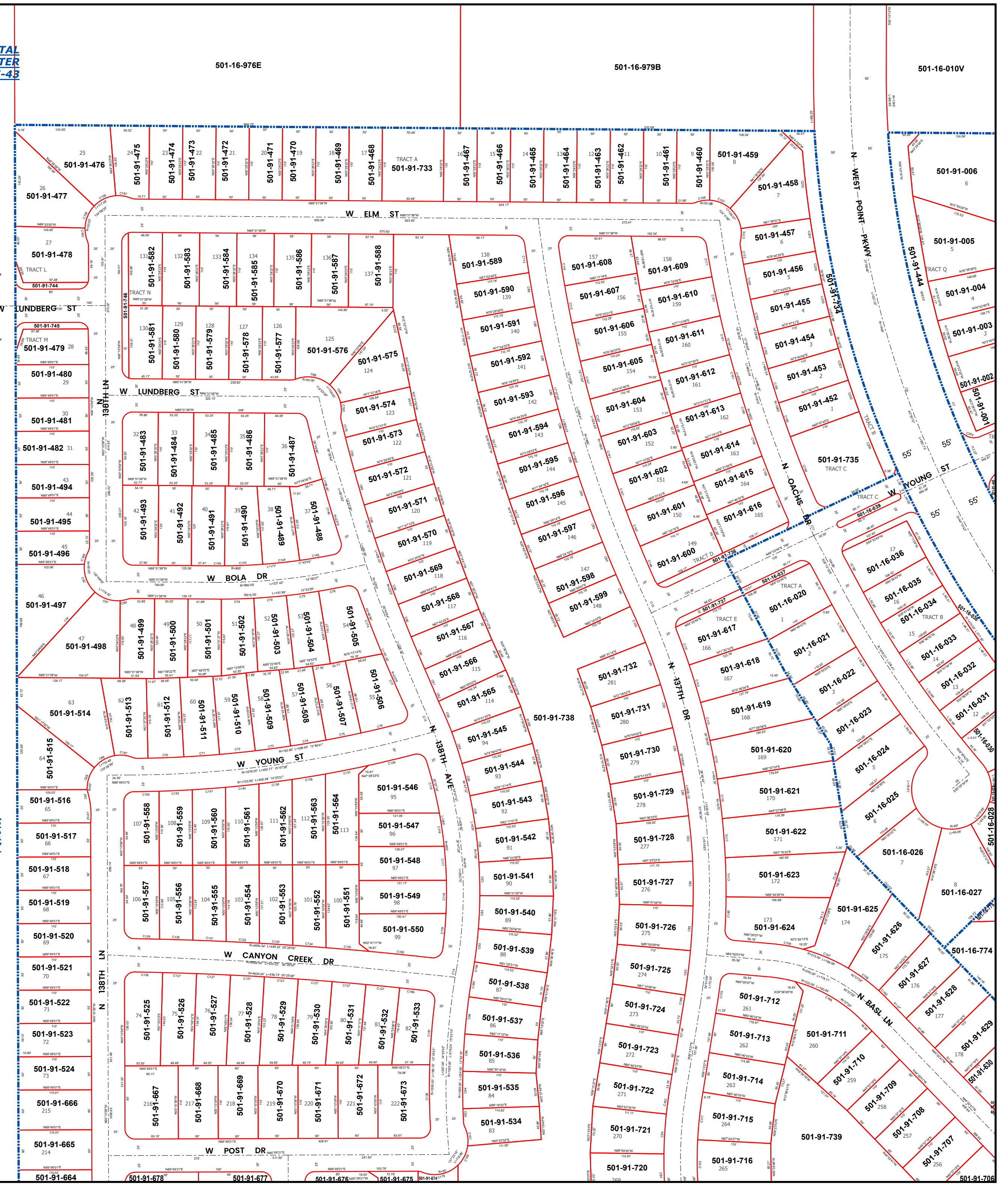
**LEON CAPITAL GROUP AT SURPRISE CENTER**  
MCR: 1775-43

501-18-698  
9  
501-18-830  
TRACT A  
501-18-809  
501-18-810  
501-18-811  
501-18-812  
501-18-813  
501-18-814  
501-18-815  
501-18-816  
501-18-817  
501-18-818  
501-18-819  
501-18-820  
501-18-821  
501-18-822  
501-18-823  
501-18-824  
501-18-825  
501-18-826  
501-18-827  
501-18-828  
501-18-829  
501-18-830  
501-18-831  
501-18-832  
501-18-833  
501-18-834  
501-18-835  
501-18-836  
501-18-837  
501-18-838  
501-18-839  
501-18-840  
501-18-841  
501-18-842  
501-18-843  
501-18-844  
501-18-845  
501-18-846  
501-18-847  
501-18-848  
501-18-849  
501-18-850  
501-18-851  
501-18-852  
501-18-853  
501-18-854  
501-18-855  
501-18-856  
501-18-857  
501-18-858  
501-18-859  
501-18-860  
501-18-861  
501-18-862  
501-18-863  
501-18-864  
501-18-865  
501-18-866  
501-18-867  
501-18-868  
501-18-869  
501-18-870  
501-18-871  
501-18-872  
501-18-873  
501-18-874  
501-18-875  
501-18-876  
501-18-877  
501-18-878  
501-18-879  
501-18-880  
501-18-881  
501-18-882  
501-18-883  
501-18-884  
501-18-885  
501-18-886  
501-18-887  
501-18-888  
501-18-889  
501-18-890  
501-18-891  
501-18-892  
501-18-893  
501-18-894  
501-18-895  
501-18-896  
501-18-897  
501-18-898  
501-18-899  
501-18-900  
501-18-901  
501-18-902  
501-18-903  
501-18-904  
501-18-905  
501-18-906  
501-18-907  
501-18-908  
501-18-909  
501-18-910  
501-18-911  
501-18-912  
501-18-913  
501-18-914  
501-18-915  
501-18-916  
501-18-917  
501-18-918  
501-18-919  
501-18-920  
501-18-921  
501-18-922  
501-18-923  
501-18-924  
501-18-925  
501-18-926  
501-18-927  
501-18-928  
501-18-929  
501-18-930  
501-18-931  
501-18-932  
501-18-933  
501-18-934  
501-18-935  
501-18-936  
501-18-937  
501-18-938  
501-18-939  
501-18-940  
501-18-941  
501-18-942  
501-18-943  
501-18-944  
501-18-945  
501-18-946  
501-18-947  
501-18-948  
501-18-949  
501-18-950  
501-18-951  
501-18-952  
501-18-953  
501-18-954  
501-18-955  
501-18-956  
501-18-957  
501-18-958  
501-18-959  
501-18-960  
501-18-961  
501-18-962  
501-18-963  
501-18-964  
501-18-965  
501-18-966  
501-18-967  
501-18-968  
501-18-969  
501-18-970  
501-18-971  
501-18-972  
501-18-973  
501-18-974  
501-18-975  
501-18-976  
501-18-977

**GEHAN AT SURPRISE CENTER**  
MCR: 1776-05

**WOOD PARTNERS AT SURPRISE CENTER**  
MCR: 1648-27

501-18-675  
4



T03N R01W Sec. 4  
T03N R01W Sec. 3  
N 138TH LN  
N 137TH DR  
N 136TH AVE  
W LUKE PKWY  
W LUNDBERG ST  
W YOUNG ST  
W CANYON CREEK DR  
W POST DR

N WEST POINT PKWY  
N OACHS DR  
N EAST LN