

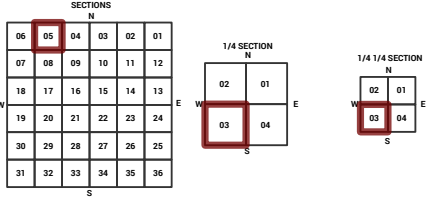
MARICOPA COUNTY STATE OF ARIZONA

PT. SECTION 5 T03N R01W

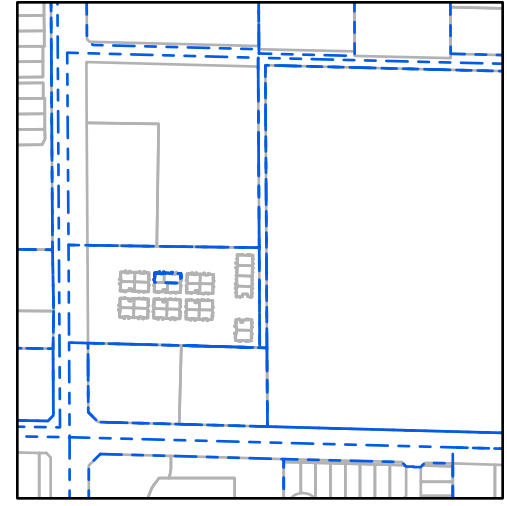
803 - 05 - 03 - 03

TOWNSHIP & RANGE SECTION 1/4 SECTION 1/4 SECTION

Grid of section numbers from 714 to 916, with section 803 highlighted in red.



Parcels updated within this map



MARICOPA COUNTY ASSESSOR'S OFFICE 301 W. Jefferson Street Phoenix, AZ 85003

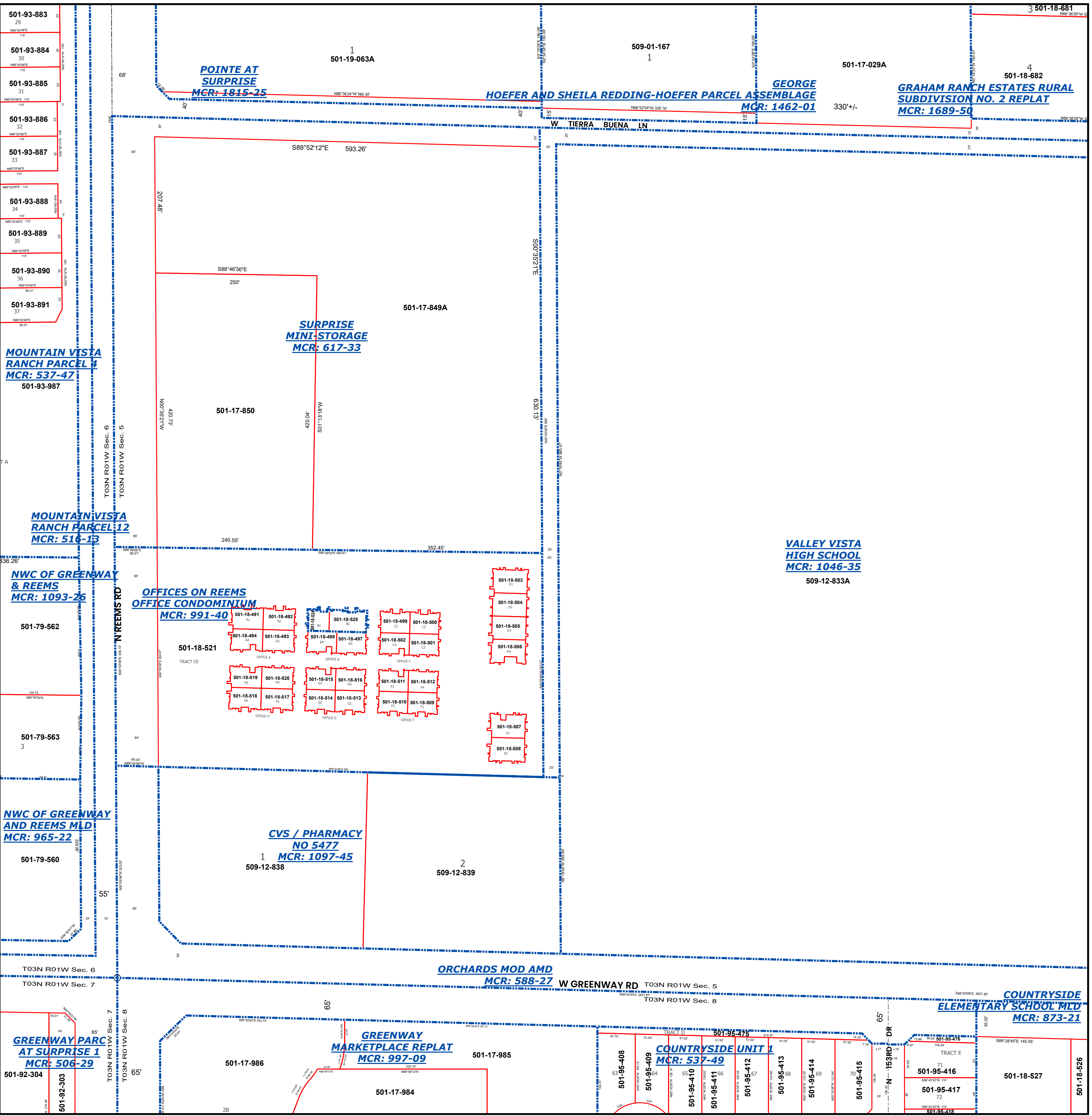
LEGEND: Tax Parcels, Sections, Subdivisions, Lots, Section Corners, Centerlines

Disclaimer - Indemnification CAUTION! USERS SHOULD INDEPENDENTLY RESEARCH AND VERIFY INFORMATION WITHIN THIS DATASET OR MAP BEFORE RELYING ON IT.

The Assessor's Office has compiled information within this dataset or map that it uses to identify, classify, and value real and personal property. Please contact the Assessor's Office at 602 506-3406 if you believe any information is incomplete, out of date, or incorrect so that appropriate corrections can be addressed.

The Assessor does not guarantee that any information contained within this dataset or map is accurate, complete or current. In many instances, the Assessor has gathered information from independent sources and made it available within this dataset or map, and the original information may have contained errors and omissions.

Map Reprint Date: 2/21/2026



- 501-93-883 29
501-93-884 30
501-93-885 31
501-93-886 32
501-93-887 33
501-93-888 34
501-93-889 35
501-93-890 36
501-93-891 37

MOUNTAIN VISTA RANCH PARCEL 4 MCR: 537-47 501-93-987

MOUNTAIN VISTA RANCH PARCEL 12 MCR: 516-13

NWC OF GREENWAY & REEMS MCR: 1093-26 501-79-562

501-79-563 3

NWC OF GREENWAY AND REEMS MLD MCR: 965-22 501-79-560

GREENWAY PARC AT SURPRISE 1 MCR: 506-29 501-92-304

POINTE AT SURPRISE MCR: 1915-25

SURPRISE MINI-STORAGE MCR: 617-33

OFFICES ON REEMS OFFICE CONDOMINIUM MCR: 991-40

CVS / PHARMACY NO 5477 MCR: 1097-45

GREENWAY MARKETPLACE REPLAT MCR: 997-09

HOEFER AND SHEILA REDDING-HOEFER PARCEL ASSEMBLAGE MCR: 1462-01

GEORGE GRAHAM RANCH ESTATES RURAL SUBDIVISION NO. 2 REPLAT MCR: 1689-50

VALLEY VISTA HIGH SCHOOL MCR: 1046-35

ORCHARDS MOD AMD MCR: 588-27

COUNTRYSIDE ELEMENTARY SCHOOL MLD MCR: 873-21

COUNTRYSIDE UNIT 1 MCR: 537-49