

# MARICOPA COUNTY

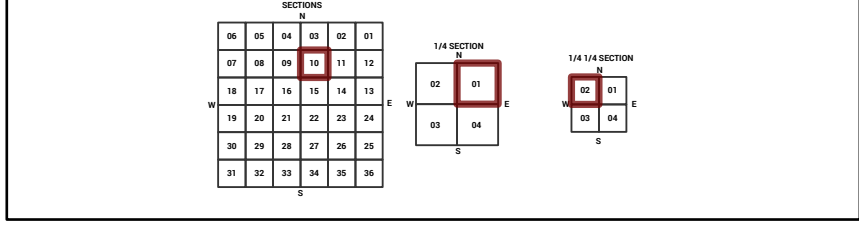
STATE OF ARIZONA

PT. SECTION 10 T03N R01W

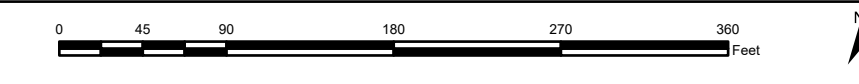
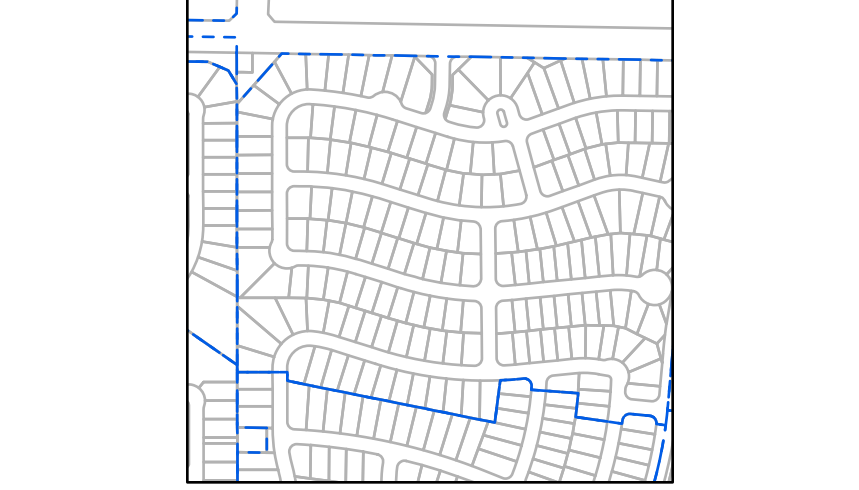
## 803 - 10 - 01 - 02

TOWNSHIP & RANGE SECTION 1/4 SECTION 1/4 1/4 SECTION

714	715	716	717	718	719	720	721	722	723	724	725	726	727	728	729	730	731	732	733
732	733	734	735	736	737	738	739	740	741	742	743	744	745	746	747	748	749	750	751
752	753	754	755	756	757	758	759	760	761	762	763	764	765	766	767	768	769	770	771
772	773	774	775	776	777	778	779	780	781	782	783	784	785	786	787	788	789	790	791
792	793	794	795	796	797	798	799	800	801	802	803	804	805	806	807	808	809	810	811
812	813	814	815	816	817	818	819	820	821	822	823	824	825	826	827	828	829	830	831
832	833	834	835	836	837	838	839	840	841	842	843	844	845	846	847	848	849	850	851
852	853	854	855	856	857	858	859	860	861	862	863	864	865	866	867	868	869	870	871
872	873	874	875	876	877	878	879	880	881	882	883	884	885	886	887	888	889	890	891
892	893	894	895	896	897	898	899	900	901	902	903	904	905	906	907	908	909	910	911
912	913	914	915	916	917	918	919	920	921	922	923	924	925	926	927	928	929	930	931
932	933	934	935	936	937	938	939	940	941	942	943	944	945	946	947	948	949	950	951
952	953	954	955	956	957	958	959	960	961	962	963	964	965	966	967	968	969	970	971
972	973	974	975	976	977	978	979	980	981	982	983	984	985	986	987	988	989	990	991
992	993	994	995	996	997	998	999	1000											



Parcels updated within this map



MARICOPA COUNTY ASSESSOR'S OFFICE  
301 W. Jefferson Street  
Phoenix, AZ 85003

**MARICOPA COUNTY**  
ASSESSOR'S OFFICE  
<https://mcaassessor.maricopa.gov>

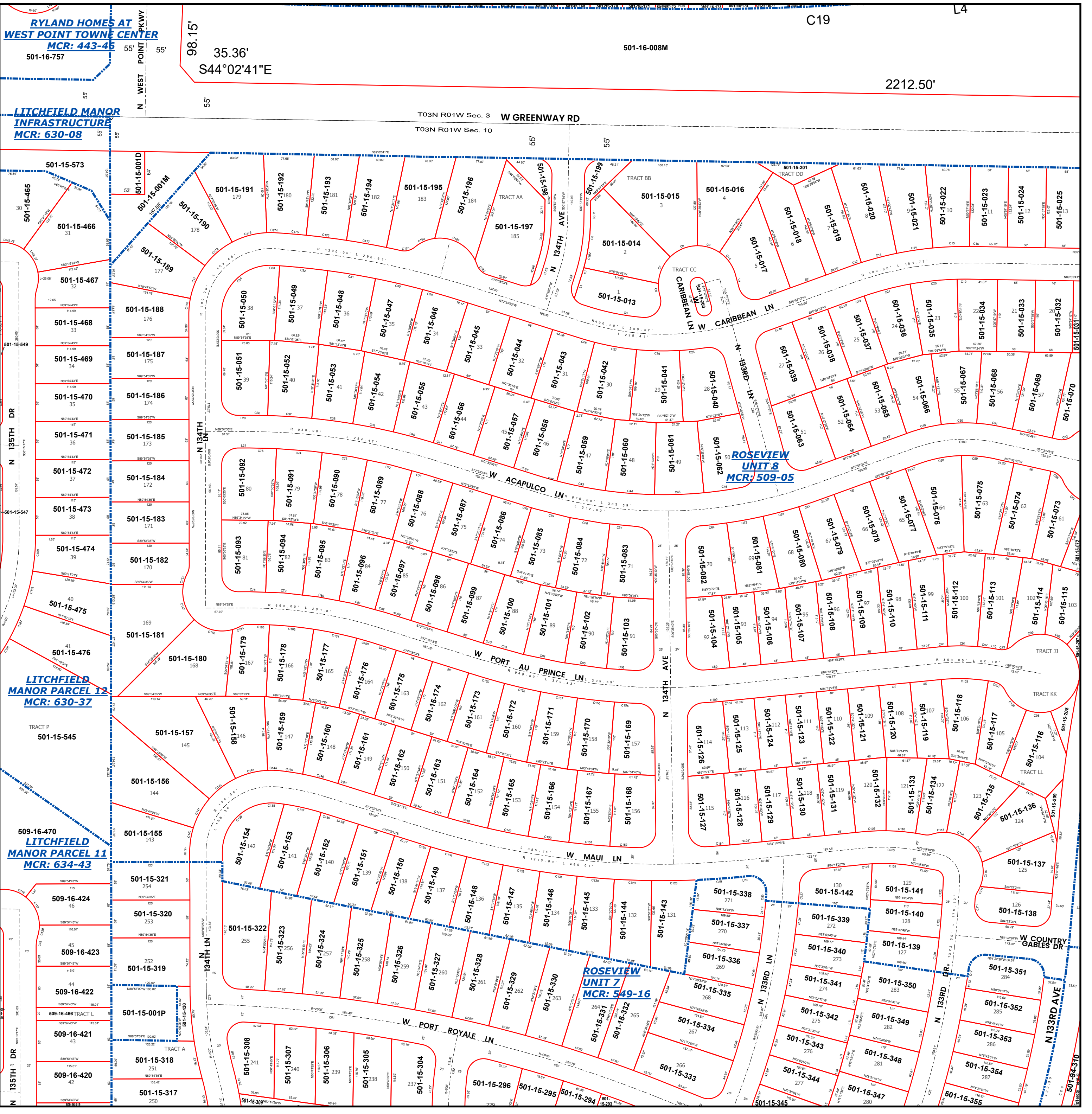
**LEGEND:** Tax Parcels (red outline), Sections (dotted outline), Subdivisions (dashed outline), Lots (solid outline), Section Corners (circle with cross), Centerlines (dashed line)

**Disclaimer - Indemnification**  
CAUTION! USERS SHOULD INDEPENDENTLY RESEARCH AND VERIFY INFORMATION WITHIN THIS DATASET OR MAP BEFORE RELYING ON IT.

The Assessor's Office has compiled information within this dataset or map that it uses to identify, classify, and value real and personal property. Please contact the Assessor's Office at 602 506-3406 if you believe any information is incomplete, out of date, or incorrect so that appropriate corrections can be addressed. Please note that a statutory process is also available to correct errors pursuant to Arizona Revised Statutes 42-16254.

The Assessor does not guarantee that any information contained within this dataset or map is accurate, complete or current. In many instances, the Assessor has gathered information from independent sources and made it available within this dataset or map, and the original information may have contained errors and omissions. Errors and omissions may have occurred in the process of gathering, interpreting, and reporting the information. Information within this dataset or map is not updated "real time." In addition, Users are cautioned that the process used within this dataset or map to illustrate the boundaries of adjacent parcels is not always consistent with the recorded documents for such parcels. The parcel boundaries depicted within this dataset or maps are for illustrative purposes only, and the exact relationship of adjacent parcels should be independently researched and verified. The information provided within this dataset or map is not the equivalent of a title report or a real estate survey. Users should independently research, investigate, and verify all information before relying on it or using it in the preparation of legal documents.

Map Reprint Date: 2/21/2026



C19 L4