

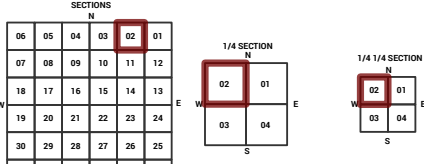
MARICOPA COUNTY
STATE OF ARIZONA

PT. SECTION 2 T03N R01E

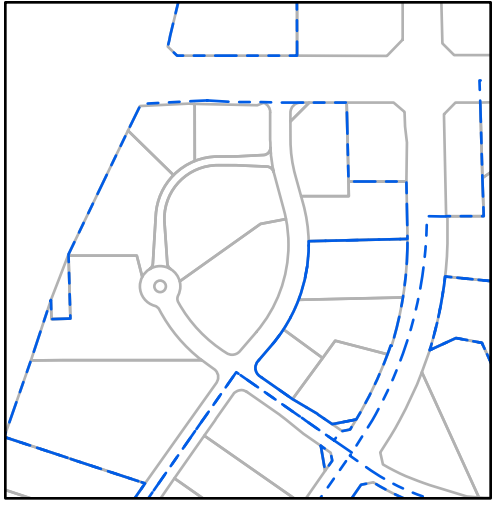
804 - 02 - 02 - 02

TOWNSHIP & RANGE SECTION 1/4 SECTION 1/4 SECTION

Grid of section numbers from 714 to 917, with section 804 highlighted in red.



Parcels updated within this map



MARICOPA COUNTY
ASSESSOR'S OFFICE
301 W. Jefferson Street
Phoenix, AZ 85003



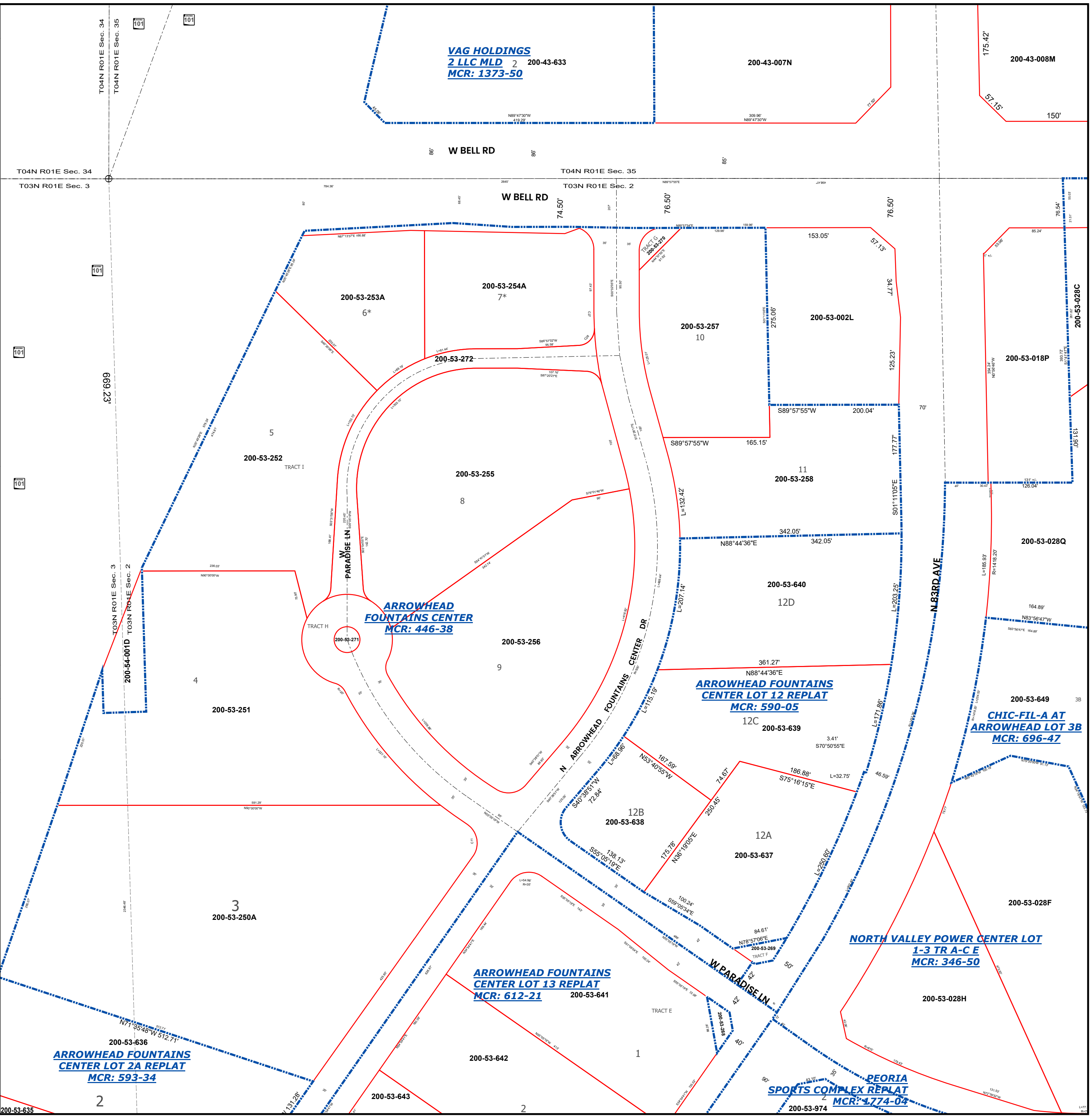
- LEGEND: Tax Parcels (red outline), Sections (dotted line), Subdivisions (dashed line), Lots (thin red outline), Section Corners (circle with cross), Centerlines (dashed line)

Disclaimer - Indemnification
CAUTION! USERS SHOULD INDEPENDENTLY RESEARCH AND VERIFY INFORMATION WITHIN THIS DATASET OR MAP BEFORE RELYING ON IT.

The Assessor's Office has compiled information within this dataset or map that it uses to identify, classify, and value real and personal property. Please contact the Assessor's Office at 602 506-3406 if you believe any information is incomplete, out of date, or incorrect so that appropriate corrections can be addressed. Please note that a statutory process is also available to correct errors pursuant to Arizona Revised Statutes 42-16254.

The Assessor does not guarantee that any information contained within this dataset or map is accurate, complete or current. In many instances, the Assessor has gathered information from independent sources and made it available within this dataset or map, and the original information may have contained errors and omissions. Errors and omissions may have occurred in the process of gathering, interpreting, and reporting the information. Information within this dataset or map is not updated "real time." In addition, Users are cautioned that the process used within this dataset or map to illustrate the boundaries of adjacent parcels is not always consistent with the recorded documents for such parcels. The parcel boundaries depicted within this dataset or maps are for illustrative purposes only, and the exact relationship of adjacent parcels should be independently researched and verified. The information provided within this dataset or map is not the equivalent of a title report or a real estate survey. Users should independently research, investigate, and verify all information before relying on it or using it in the preparation of legal documents.

Map Reprint Date: 2/21/2026



VAG HOLDINGS
2 LLC MLD 2 200-43-633
MCR: 1373-50

200-43-007N

200-43-008M

W BELL RD

W BELL RD

200-53-253A
6*

200-53-254A
7*

200-53-257
10

200-53-002L

200-53-018P

200-53-252
TRACT I

200-53-255
8

200-53-258
11

200-53-028Q

ARROWHEAD
FOUNTAINS CENTER
MCR: 446-38

200-53-256
9

200-53-640
12D

200-53-649

ARROWHEAD FOUNTAINS
CENTER LOT 12 REPLAT
MCR: 590-05

200-53-251
4

200-53-639
12C

CHIC-FIL-A AT
ARROWHEAD LOT 3B
MCR: 696-47

200-53-638
12B

200-53-637
12A

200-53-028F

NORTH VALLEY POWER CENTER LOT
1-3 TR A-C E
MCR: 346-50

200-53-250A
3

ARROWHEAD FOUNTAINS
CENTER LOT 13 REPLAT
MCR: 612-21

ARROWHEAD FOUNTAINS
CENTER LOT 2A REPLAT
MCR: 593-34

200-53-642

PEORIA
SPORTS COMPLEX REPLAT
MCR: 1774-04

200-53-028H

200-53-643

200-53-974

200-53-635