

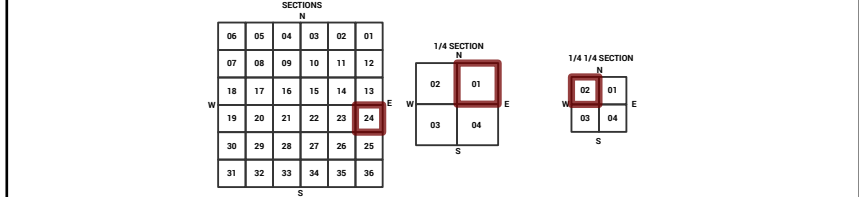
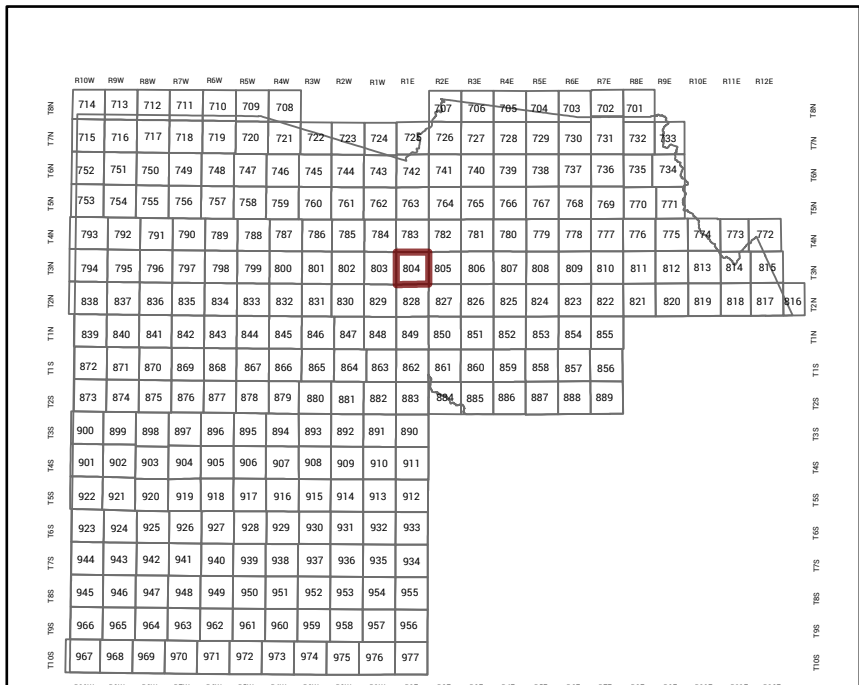
# MARICOPA COUNTY

STATE OF ARIZONA

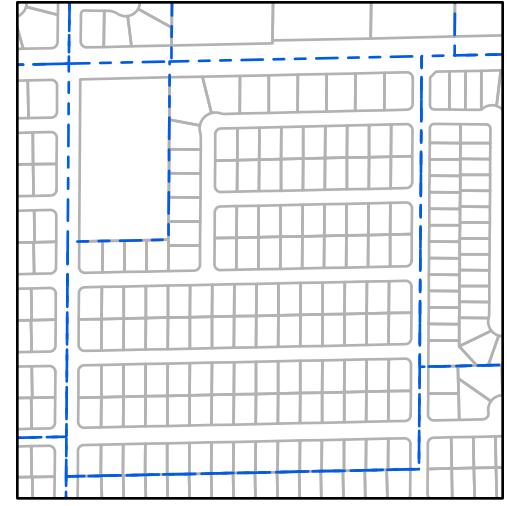
PT. SECTION 24 T03N R01E

## 804 - 24 - 01 - 02

TOWNSHIP & RANGE SECTION 1/4 SECTION 1/4 1/4 SECTION



Parcels updated within this map



MARICOPA COUNTY  
ASSESSOR'S OFFICE  
301 W. Jefferson Street  
Phoenix, AZ 85003

**MARICOPA COUNTY**  
ASSESSOR'S OFFICE  
<https://mccassessor.maricopa.gov>

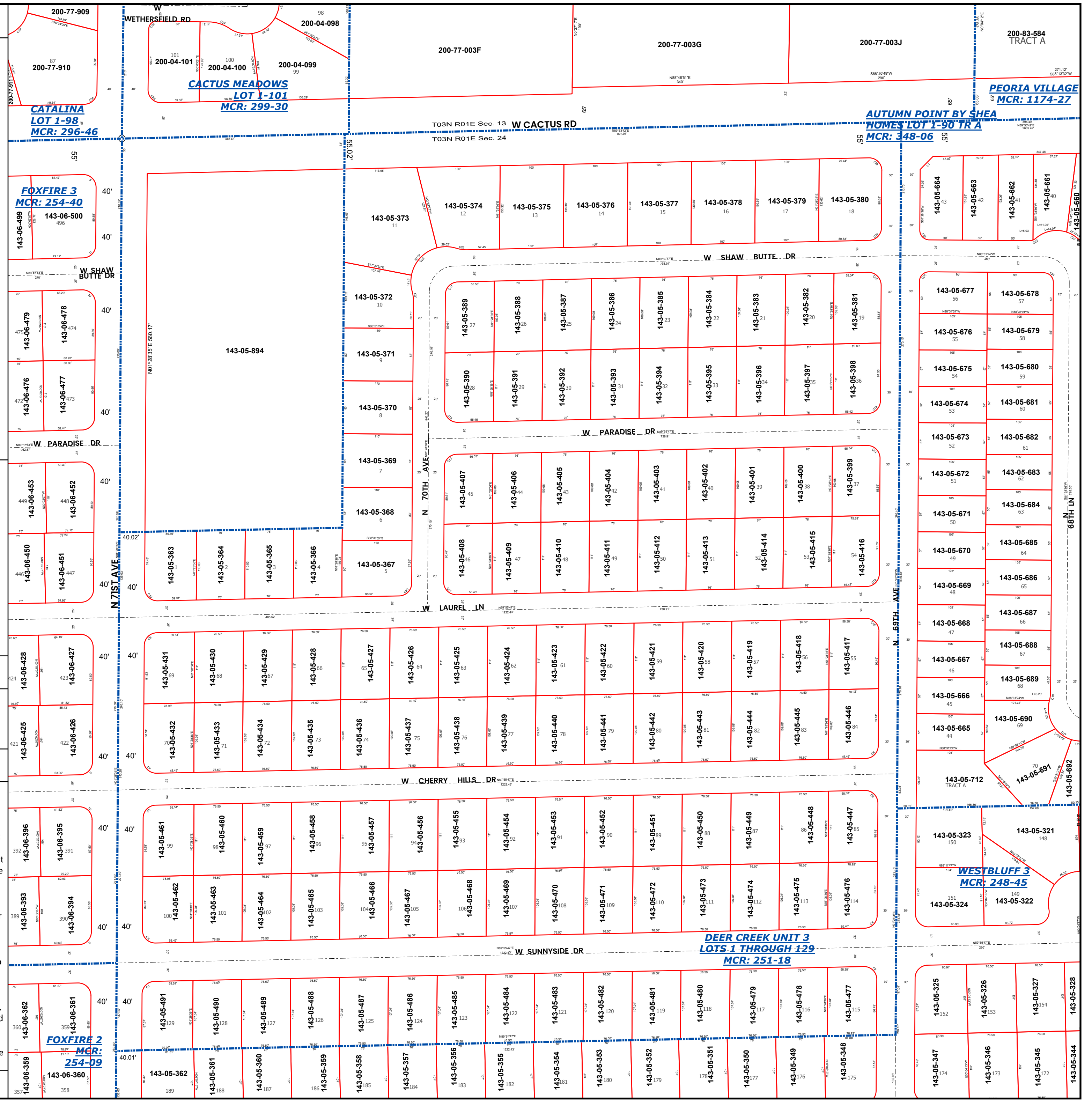
**LEGEND:** Tax Parcels Sections Subdivisions  
Lots Section Corners Centerlines

**Disclaimer - Indemnification**  
CAUTION! USERS SHOULD INDEPENDENTLY RESEARCH AND VERIFY INFORMATION WITHIN THIS DATASET OR MAP BEFORE RELYING ON IT.

The Assessor's Office has compiled information within this dataset or map that it uses to identify, classify, and value real and personal property. Please contact the Assessor's Office at 602 506-3406 if you believe any information is incomplete, out of date, or incorrect so that appropriate corrections can be addressed. Please note that a statutory process is also available to correct errors pursuant to Arizona Revised Statutes 42-16254.

The Assessor does not guarantee that any information contained within this dataset or map is accurate, complete or current. In many instances, the Assessor has gathered information from independent sources and made it available within this dataset or map, and the original information may have contained errors and omissions. Errors and omissions may have occurred in the process of gathering, interpreting, and reporting the information. Information within this dataset or map is not updated "real time." In addition, Users are cautioned that the process used within this dataset or map to illustrate the boundaries of adjacent parcels is not always consistent with the recorded documents for such parcels. The parcel boundaries depicted within this dataset or maps are for illustrative purposes only, and the exact relationship of adjacent parcels should be independently researched and verified. The information provided within this dataset or map is not the equivalent of a title report or a real estate survey. Users should independently research, investigate, and verify all information before relying on it or using it in the preparation of legal documents.

Map Reprint Date: 2/21/2026



200-77-909  
200-77-910  
200-04-101  
200-04-100  
200-04-099  
200-77-003F  
200-77-003G  
200-77-003J  
200-83-584 TRACT A  
CATALINA LOT 1-98 MCR: 296-46  
CACTUS MEADOWS LOT 1-101 MCR: 299-30  
AUTUMN POINT BY SHEA HOMES LOT 1-90 TR A MCR: 348-06  
PEORIA VILLAGE MCR: 1174-27

200-77-910  
200-77-910  
200-77-910

143-06-499  
143-06-500  
143-06-479  
143-06-478  
143-06-476  
143-06-477

143-06-453  
143-06-452  
143-06-450  
143-06-451

143-06-428  
143-06-427  
143-06-425  
143-06-426

143-06-396  
143-06-395  
143-06-393  
143-06-394

143-06-362  
143-06-361  
143-06-360  
143-06-360

200-77-909  
200-77-910  
200-04-101  
200-04-100  
200-04-099  
200-77-003F  
200-77-003G  
200-77-003J  
200-83-584 TRACT A  
CATALINA LOT 1-98 MCR: 296-46  
CACTUS MEADOWS LOT 1-101 MCR: 299-30  
AUTUMN POINT BY SHEA HOMES LOT 1-90 TR A MCR: 348-06  
PEORIA VILLAGE MCR: 1174-27

200-77-910  
200-77-910  
200-77-910

143-06-499  
143-06-500  
143-06-479  
143-06-478  
143-06-476  
143-06-477

143-06-453  
143-06-452  
143-06-450  
143-06-451

143-06-428  
143-06-427  
143-06-425  
143-06-426

143-06-396  
143-06-395  
143-06-393  
143-06-394

143-06-362  
143-06-361  
143-06-360  
143-06-360

200-77-909  
200-77-910  
200-04-101  
200-04-100  
200-04-099  
200-77-003F  
200-77-003G  
200-77-003J  
200-83-584 TRACT A  
CATALINA LOT 1-98 MCR: 296-46  
CACTUS MEADOWS LOT 1-101 MCR: 299-30  
AUTUMN POINT BY SHEA HOMES LOT 1-90 TR A MCR: 348-06  
PEORIA VILLAGE MCR: 1174-27

200-77-910  
200-77-910  
200-77-910

143-06-499  
143-06-500  
143-06-479  
143-06-478  
143-06-476  
143-06-477

143-06-453  
143-06-452  
143-06-450  
143-06-451

143-06-428  
143-06-427  
143-06-425  
143-06-426

143-06-396  
143-06-395  
143-06-393  
143-06-394

143-06-362  
143-06-361  
143-06-360  
143-06-360

200-77-909  
200-77-910  
200-04-101  
200-04-100  
200-04-099  
200-77-003F  
200-77-003G  
200-77-003J  
200-83-584 TRACT A  
CATALINA LOT 1-98 MCR: 296-46  
CACTUS MEADOWS LOT 1-101 MCR: 299-30  
AUTUMN POINT BY SHEA HOMES LOT 1-90 TR A MCR: 348-06  
PEORIA VILLAGE MCR: 1174-27

200-77-910  
200-77-910  
200-77-910

143-06-499  
143-06-500  
143-06-479  
143-06-478  
143-06-476  
143-06-477

143-06-453  
143-06-452  
143-06-450  
143-06-451

143-06-428  
143-06-427  
143-06-425  
143-06-426

143-06-396  
143-06-395  
143-06-393  
143-06-394

143-06-362  
143-06-361  
143-06-360  
143-06-360

200-77-909  
200-77-910  
200-04-101  
200-04-100  
200-04-099  
200-77-003F  
200-77-003G  
200-77-003J  
200-83-584 TRACT A  
CATALINA LOT 1-98 MCR: 296-46  
CACTUS MEADOWS LOT 1-101 MCR: 299-30  
AUTUMN POINT BY SHEA HOMES LOT 1-90 TR A MCR: 348-06  
PEORIA VILLAGE MCR: 1174-27

200-77-910  
200-77-910  
200-77-910

143-06-499  
143-06-500  
143-06-479  
143-06-478  
143-06-476  
143-06-477

143-06-453  
143-06-452  
143-06-450  
143-06-451

143-06-428  
143-06-427  
143-06-425  
143-06-426

143-06-396  
143-06-395  
143-06-393  
143-06-394

143-06-362  
143-06-361  
143-06-360  
143-06-360

200-77-909  
200-77-910  
200-04-101  
200-04-100  
200-04-099  
200-77-003F  
200-77-003G  
200-77-003J  
200-83-584 TRACT A  
CATALINA LOT 1-98 MCR: 296-46  
CACTUS MEADOWS LOT 1-101 MCR: 299-30  
AUTUMN POINT BY SHEA HOMES LOT 1-90 TR A MCR: 348-06  
PEORIA VILLAGE MCR: 1174-27

200-77-910  
200-77-910  
200-77-910

143-06-499  
143-06-500  
143-06-479  
143-06-478  
143-06-476  
143-06-477

143-06-453  
143-06-452  
143-06-450  
143-06-451

143-06-428  
143-06-427  
143-06-425  
143-06-426

143-06-396  
143-06-395  
143-06-393  
143-06-394

143-06-362  
143-06-361  
143-06-360  
143-06-360

143-05-664  
143-05-663  
143-05-662  
143-05-661  
143-05-660

143-05-677  
143-05-678  
143-05-676  
143-05-679  
143-05-675  
143-05-680  
143-05-674  
143-05-681  
143-05-673  
143-05-682  
143-05-672  
143-05-683  
143-05-671  
143-05-684  
143-05-670  
143-05-685  
143-05-669  
143-05-686  
143-05-668  
143-05-687  
143-05-667  
143-05-688  
143-05-666  
143-05-689  
143-05-665  
143-05-690  
143-05-664  
143-05-691  
143-05-692

143-05-323  
143-05-321  
143-05-324  
143-05-322  
143-05-325  
143-05-326  
143-05-327  
143-05-328

143-05-347  
143-05-346  
143-05-345  
143-05-344

200-77-909  
200-77-910  
200-04-101  
200-04-100  
200-04-099  
200-77-003F  
200-77-003G  
200-77-003J  
200-83-584 TRACT A  
CATALINA LOT 1-98 MCR: 296-46  
CACTUS MEADOWS LOT 1-101 MCR: 299-30  
AUTUMN POINT BY SHEA HOMES LOT 1-90 TR A MCR: 348-06  
PEORIA VILLAGE MCR: 1174-27

200-77-910  
200-77-910  
200-77-910

143-06-499  
143-06-500  
143-06-479  
143-06-478  
143-06-476  
143-06-477

143-06-453  
143-06-452  
143-06-450  
143-06-451

143-06-428  
143-06-427  
143-06-425  
143-06-426

143-06-396  
143-06-395  
143-06-393  
143-06-394

143-06-362  
143-06-361  
143-06-360  
143-06-360

143-05-664  
143-05-663  
143-05-662  
143-05-661  
143-05-660

143-05-677  
143-05-678  
143-05-676  
143-05-679  
143-05-675  
143-05-680  
143-05-674  
143-05-681  
143-05-673  
143-05-682  
143-05-672  
143-05-683  
143-05-671  
143-05-684  
143-05-670  
143-05-685  
143-05-669  
143-05-686  
143-05-668  
143-05-687  
143-05-667  
143-05-688  
143-05-666  
143-05-689  
143-05-665  
143-05-690  
143-05-664  
143-05-691  
143-05-692

143-05-323  
143-05-321  
143-05-324  
143-05-322  
143-05-325  
143-05-326  
143-05-327  
143-05-328

143-05-347  
143-05-346  
143-05-345  
143-05-344

200-77-909  
200-77-910  
200-04-101  
200-04-100  
200-04-099  
200-77-003F  
200-77-003G  
200-77-003J  
200-83-584 TRACT A  
CATALINA LOT 1-98 MCR: 296-46  
CACTUS MEADOWS LOT 1-101 MCR: 299-30  
AUTUMN POINT BY SHEA HOMES LOT 1-90 TR A MCR: 348-06  
PEORIA VILLAGE MCR: 1174-27

200-77-910  
200-77-910  
200-77-910

143-06-499  
143-06-500  
143-06-479  
143-06-478  
143-06-476  
143-06-477

143-06-453  
143-06-452  
143-06-450  
143-06-451

143-06-428  
143-06-427  
143-06-425  
143-06-426

143-06-396  
143-06-395  
143-06-393  
143-06-394

143-06-362  
143-06-361  
143-06-360  
143-06-360

143-05-664  
143-05-663  
143-05-662  
143-05-661  
143-05-660

143-05-677  
143-05-678  
143-05-676  
143-05-679  
143-05-675  
143-05-680  
143-05-674  
143-05-681  
143-05-673  
143-05-682  
143-05-672  
143-05-683  
143-05-671  
143-05-684  
143-05-670  
143-05-685  
143-05-669  
143-05-686  
143-05-668  
143-05-687  
143-05-667  
143-05-688  
143-05-666  
143-05-689  
143-05-665  
143-05-690  
143-05-664  
143-05-691  
143-05-692

143-05-323  
143-05-321  
143-05-324  
143-05-322  
143-05-325  
143-05-326  
143-05-327  
143-05-328

143-05-347  
143-05-346  
143-05-345  
143-05-344

200-77-909  
200-77-910  
200-04-101  
200-04-100  
200-04-099  
200-77-003F  
200-77-003G  
200-77-003J  
200-83-584 TRACT A  
CATALINA LOT 1-98 MCR: 296-46  
CACTUS MEADOWS LOT 1-101 MCR: 299-30  
AUTUMN POINT BY SHEA HOMES LOT 1-90 TR A MCR: 348-06  
PEORIA VILLAGE MCR: 1174-27

200-77-910  
200-77-910  
200-77-910

143-06-499  
143-06-500  
143-06-479  
143-06-478  
143-06-476  
143-06-477

143-06-453  
143-06-452  
143-06-450  
143-06-451

143-06-428  
143-06-427  
143-06-425  
143-06-426

143-06-396  
143-06-395  
143-06-393  
143-06-394

143-06-362  
143-06-361  
143-06-360  
143-06-360

143-05-664  
143-05-663  
143-05-662  
143-05-661  
143-05-660

143-05-677  
143-05-678  
143-05-676  
143-05-679  
143-05-675  
143-05-680  
143-05-674  
143-05-681  
143-05-673  
143-05-682  
143-05-672  
143-05-683  
143-05-671  
143-05-684  
143-05-670  
143-05-685  
143-05-669  
143-05-686  
143-05-668  
143-05-687  
143-05-667  
143-05-688  
143-05-666  
143-05-689  
143-05-665  
143-05-690  
143-05-664  
143-05-691  
143-05-692

143-05-323  
143-05-321  
143-05-324  
143-05-322  
143-05-325  
143-05-326  
143-05-327  
143-05-328

143-05-347  
143-05-346  
143-05-345  
143-05-344

200-77-909  
200-77-910  
200-04-101  
200-04-100  
200-04-099  
200-77-003F  
200-77-003G  
200-77-003J  
200-83-584 TRACT A  
CATALINA LOT 1-98 MCR: 296-46  
CACTUS MEADOWS LOT 1-101 MCR: 299-30  
AUTUMN POINT BY SHEA HOMES LOT 1-90 TR A MCR: 348-06  
PEORIA VILLAGE MCR: 1174-27

200-77-910  
200-77-910  
200-77-910

143-06-499  
143-06-500  
143-06-479  
143-06-478  
143-06-476  
143-06-477

143-06-453  
143-06-452  
143-06-450  
143-06-451

143-06-428  
143-06-427  
143-06-425  
143-06-426

143-06-396  
143-06-395  
143-06-393  
143-06-394

143-06-362  
143-06-361  
143-06-360  
143-06-360

143-05-664  
143-05-663  
143-05-662  
143-05-661  
143-05-660

143-05-677  
143-05-678  
143-05-676  
143-05-679  
143-05-675  
143-05-680  
143-05-674  
143-05-681  
143-05-673  
143-05-682  
143-05-672  
143-05-683  
143-05-671  
143-05-684  
143-05-670  
143-05-685  
143-05-669  
143-05-686  
143-05-668  
143-05-687  
143-05-667  
143-05-688  
143-05-666  
143-05-689  
143-05-665  
143-05-690  
143-05-664  
143-05-691  
143-05-692

143-05-323  
143-05-321  
143-05-324  
143-05-322  
143-05-325  
143-05-326  
143-05-327  
143-05-328

143-05-347  
143-05-346  
143-05-345  
143-05-344

200-77-909  
200-77-910  
200-04-101  
200-04-100  
200-04-099  
200-77-003F  
200-77-003G  
200-77-003J  
200-83-584 TRACT A  
CATALINA LOT 1-98 MCR: 296-46  
CACTUS MEADOWS LOT 1-101 MCR: 299-30  
AUTUMN POINT BY SHEA HOMES LOT 1-90 TR A MCR: 348-06  
PEORIA VILLAGE MCR: 1174-27

200-77-910  
200-77-910  
200-77-910

143-06-499  
143-06-500  
143-06-479  
143-06-478  
143-06-476  
143-06-477

143-06-453