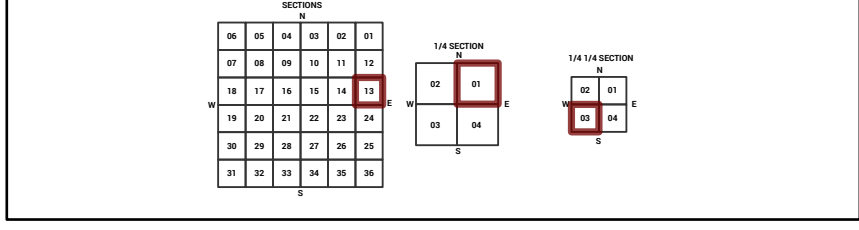
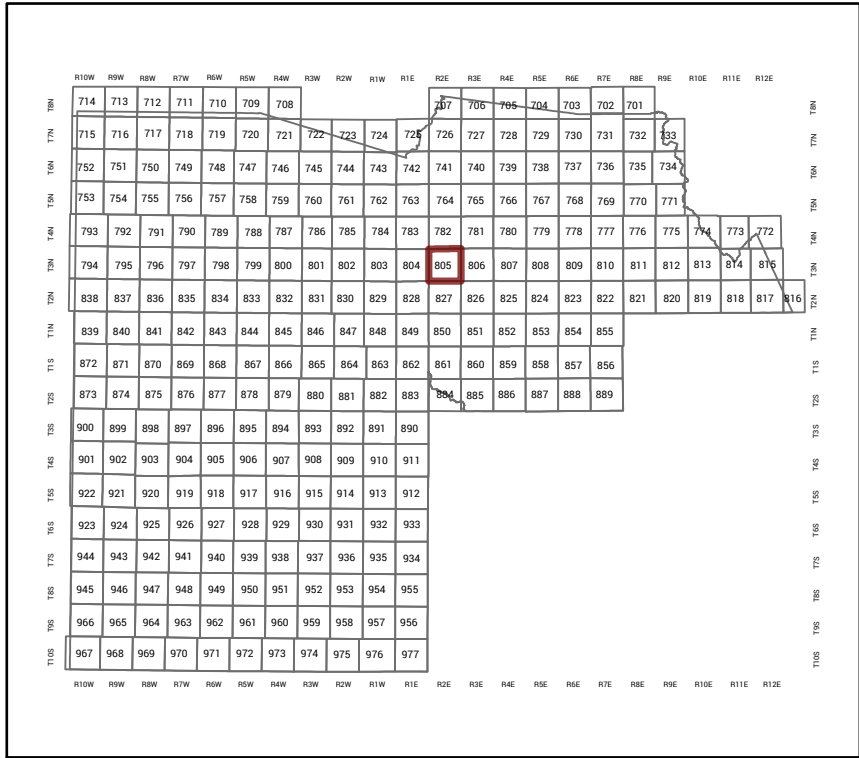


MARICOPA COUNTY STATE OF ARIZONA

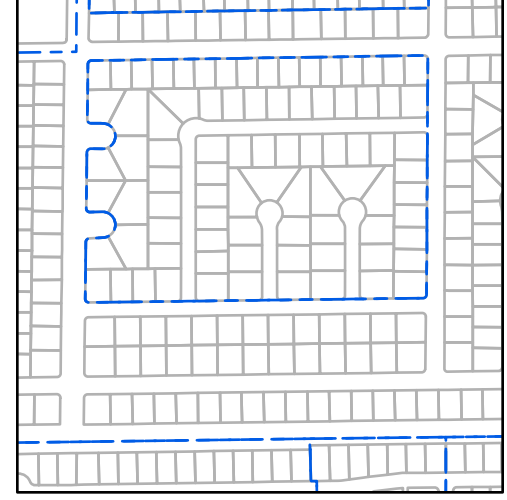
PT. SECTION 13 T03N R02E

805 - 13 - 01 - 03

TOWNSHIP & RANGE SECTION 1/4 SECTION 1/4 1/4 SECTION



Parcels updated within this map



MARICOPA COUNTY ASSESSOR'S OFFICE 301 W. Jefferson Street Phoenix, AZ 85003

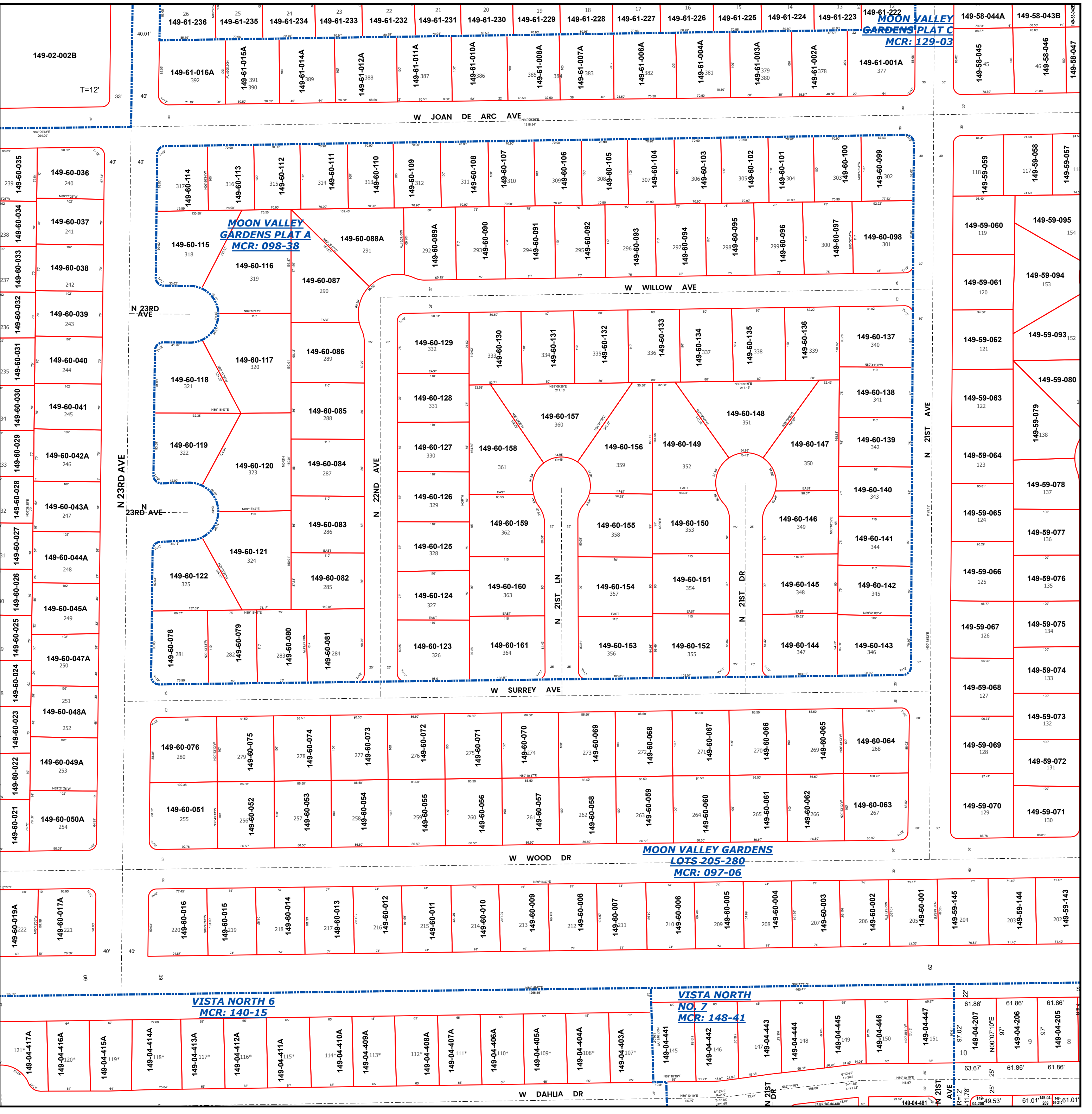
LEGEND: Tax Parcels, Sections, Subdivisions, Lots, Section Corners, Centerlines

Disclaimer - Indemnification CAUTION! USERS SHOULD INDEPENDENTLY RESEARCH AND VERIFY INFORMATION WITHIN THIS DATASET OR MAP BEFORE RELYING ON IT.

The Assessor's Office has compiled information within this dataset or map that it uses to identify, classify, and value real and personal property. Please contact the Assessor's Office at 602 506-3406 if you believe any information is incomplete, out of date, or incorrect so that appropriate corrections can be addressed.

The Assessor does not guarantee that any information contained within this dataset or map is accurate, complete or current. In many instances, the Assessor has gathered information from independent sources and made it available within this dataset or map, and the original information may have contained errors and omissions.

Map Reprint Date: 2/21/2026



MOON VALLEY GARDENS PLAT C MCR: 129-03

MOON VALLEY GARDENS PLAT A MCR: 098-38

MOON VALLEY GARDENS LOTS 205-280 MCR: 097-06

VISTA NORTH 6 MCR: 140-15

VISTA NORTH NO. 7 MCR: 148-41