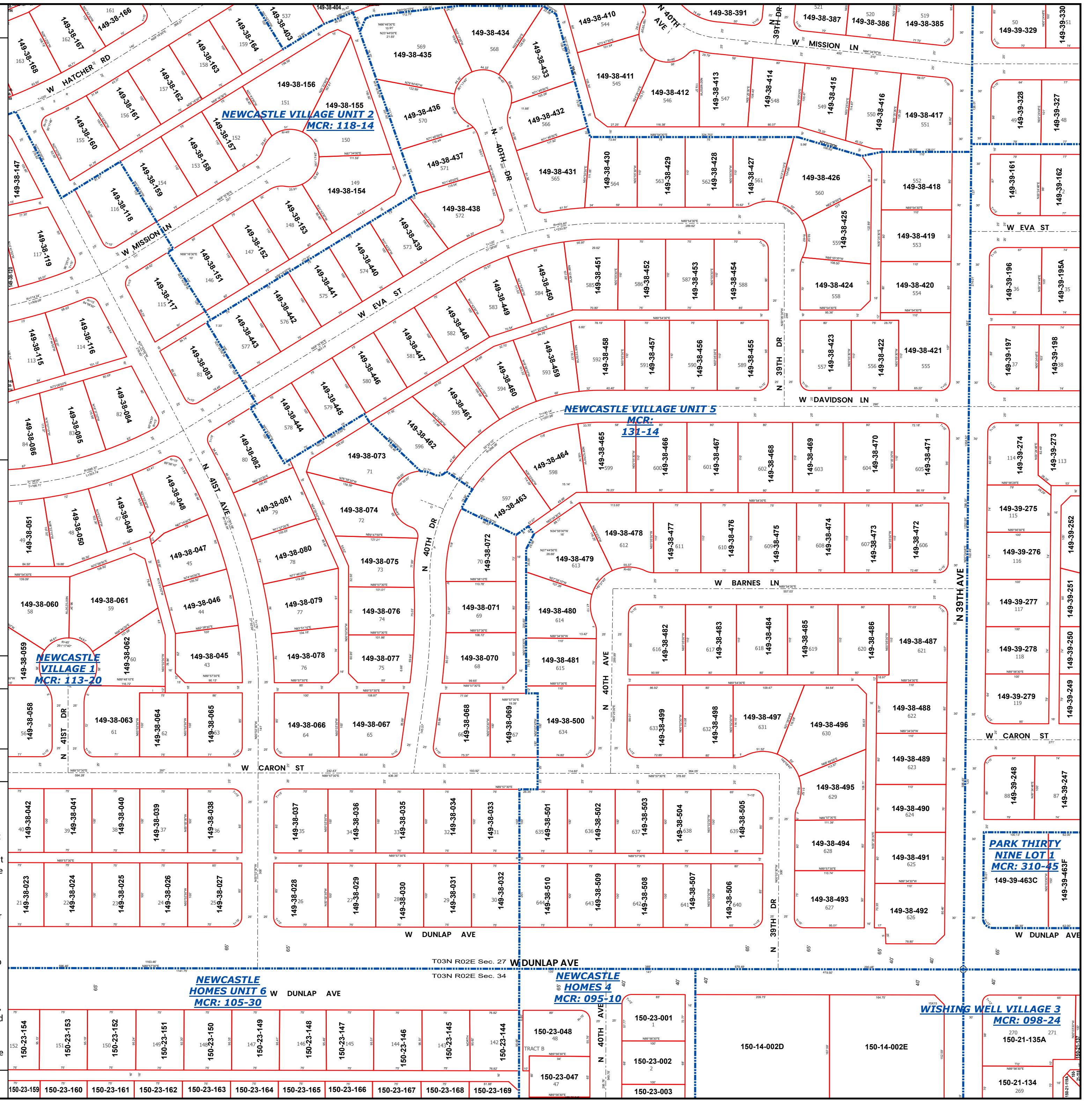
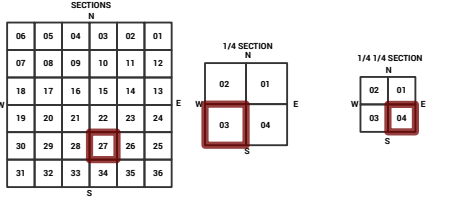
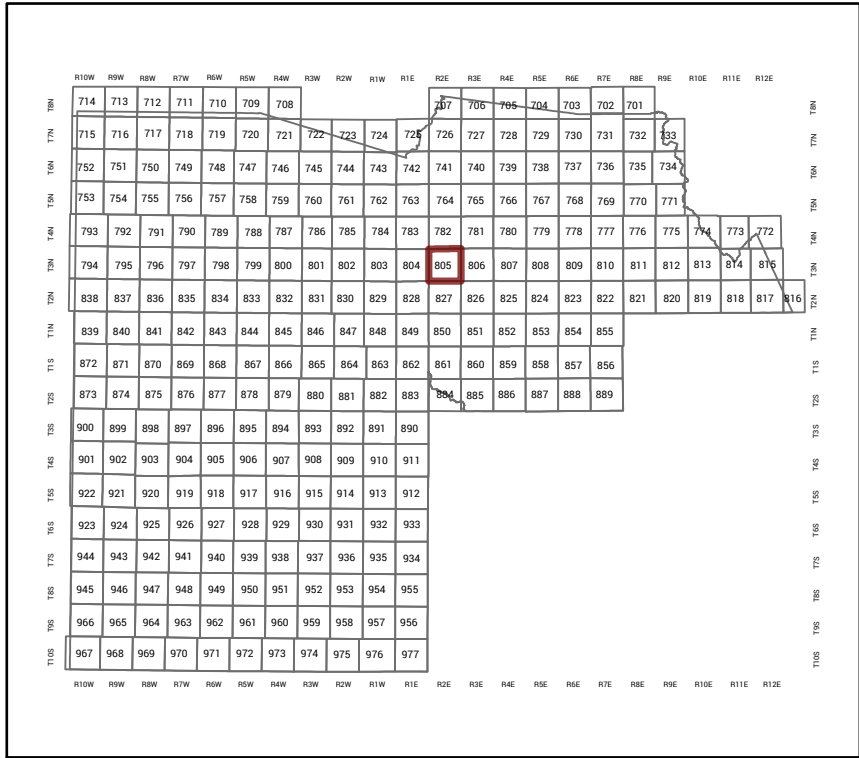


MARICOPA COUNTY
STATE OF ARIZONA

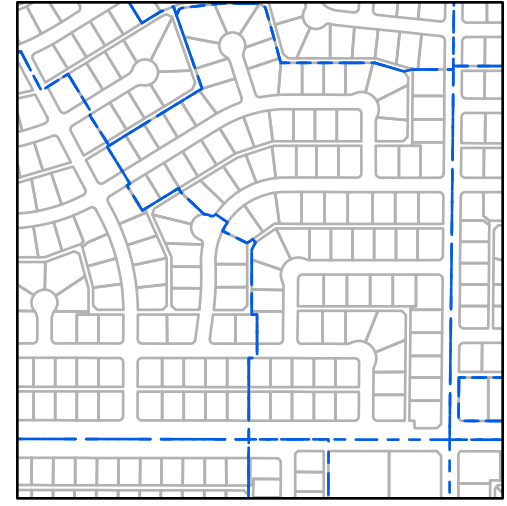
PT. SECTION 27 T03N R02E

805 - 27 - 03 - 04

TOWNSHIP & RANGE SECTION 1/4 SECTION 1/4 1/4 SECTION



Parcels updated within this map



MARICOPA COUNTY ASSESSOR'S OFFICE
301 W. Jefferson Street
Phoenix, AZ 85003
MARICOPA COUNTY
ASSESSOR'S OFFICE
<https://mcaassessor.maricopa.gov>

LEGEND: Tax Parcels Sections Subdivisions
Lots Section Corners Centerlines

Disclaimer - Indemnification
CAUTION! USERS SHOULD INDEPENDENTLY RESEARCH AND VERIFY INFORMATION WITHIN THIS DATASET OR MAP BEFORE RELYING ON IT.

The Assessor's Office has compiled information within this dataset or map that it uses to identify, classify, and value real and personal property. Please contact the Assessor's Office at 602 506-3406 if you believe any information is incomplete, out of date, or incorrect so that appropriate corrections can be addressed. Please note that a statutory process is also available to correct errors pursuant to Arizona Revised Statutes 42-16254.

The Assessor does not guarantee that any information contained within this dataset or map is accurate, complete or current. In many instances, the Assessor has gathered information from independent sources and made it available within this dataset or map, and the original information may have contained errors and omissions. Errors and omissions may have occurred in the process of gathering, interpreting, and reporting the information. Information within this dataset or map is not updated "real time." In addition, Users are cautioned that the process used within this dataset or map to illustrate the boundaries of adjacent parcels is not always consistent with the recorded documents for such parcels. The parcel boundaries depicted within this dataset or maps are for illustrative purposes only, and the exact relationship of adjacent parcels should be independently researched and verified. The information provided within this dataset or map is not the equivalent of a title report or a real estate survey. Users should independently research, investigate, and verify all information before relying on it or using it in the preparation of legal documents.

Map Reprint Date: 2/22/2026

NEWCASTLE HOMES UNIT 6
MCR: 105-30

NEWCASTLE HOMES 4
MCR: 095-10

PARK THIRTY NINE LOT 1
MCR: 310-45F
149-39-463C

WISHING WELL VILLAGE 3
MCR: 098-24

150-23-154 150-23-153 150-23-152 150-23-151 150-23-150 150-23-149 150-23-148 150-23-147 150-23-146 150-23-145 150-23-144 150-23-143 150-23-142 150-23-141 150-23-140 150-23-139 150-23-138 150-23-137 150-23-136 150-23-135 150-23-134 150-23-133 150-23-132 150-23-131 150-23-130 150-23-129 150-23-128 150-23-127 150-23-126 150-23-125 150-23-124 150-23-123 150-23-122 150-23-121 150-23-120 150-23-119 150-23-118 150-23-117 150-23-116 150-23-115 150-23-114 150-23-113 150-23-112 150-23-111 150-23-110 150-23-109 150-23-108 150-23-107 150-23-106 150-23-105 150-23-104 150-23-103 150-23-102 150-23-101 150-23-100 150-23-099 150-23-098 150-23-097 150-23-096 150-23-095 150-23-094 150-23-093 150-23-092 150-23-091 150-23-090 150-23-089 150-23-088 150-23-087 150-23-086 150-23-085 150-23-084 150-23-083 150-23-082 150-23-081 150-23-080 150-23-079 150-23-078 150-23-077 150-23-076 150-23-075 150-23-074 150-23-073 150-23-072 150-23-071 150-23-070 150-23-069 150-23-068 150-23-067 150-23-066 150-23-065 150-23-064 150-23-063 150-23-062 150-23-061 150-23-060 150-23-059 150-23-058 150-23-057 150-23-056 150-23-055 150-23-054 150-23-053 150-23-052 150-23-051 150-23-050 150-23-049 150-23-048 150-23-047 150-23-046 150-23-045 150-23-044 150-23-043 150-23-042 150-23-041 150-23-040 150-23-039 150-23-038 150-23-037 150-23-036 150-23-035 150-23-034 150-23-033 150-23-032 150-23-031 150-23-030 150-23-029 150-23-028 150-23-027 150-23-026 150-23-025 150-23-024 150-23-023 150-23-022 150-23-021 150-23-020 150-23-019 150-23-018 150-23-017 150-23-016 150-23-015 150-23-014 150-23-013 150-23-012 150-23-011 150-23-010 150-23-009 150-23-008 150-23-007 150-23-006 150-23-005 150-23-004 150-23-003 150-23-002 150-23-001