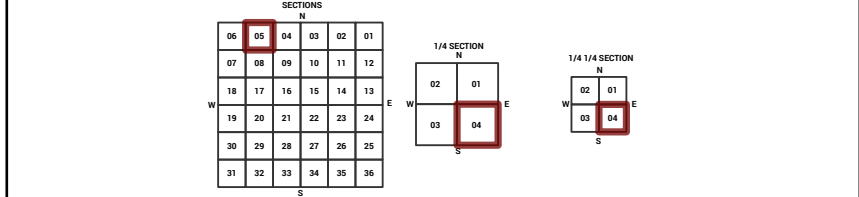
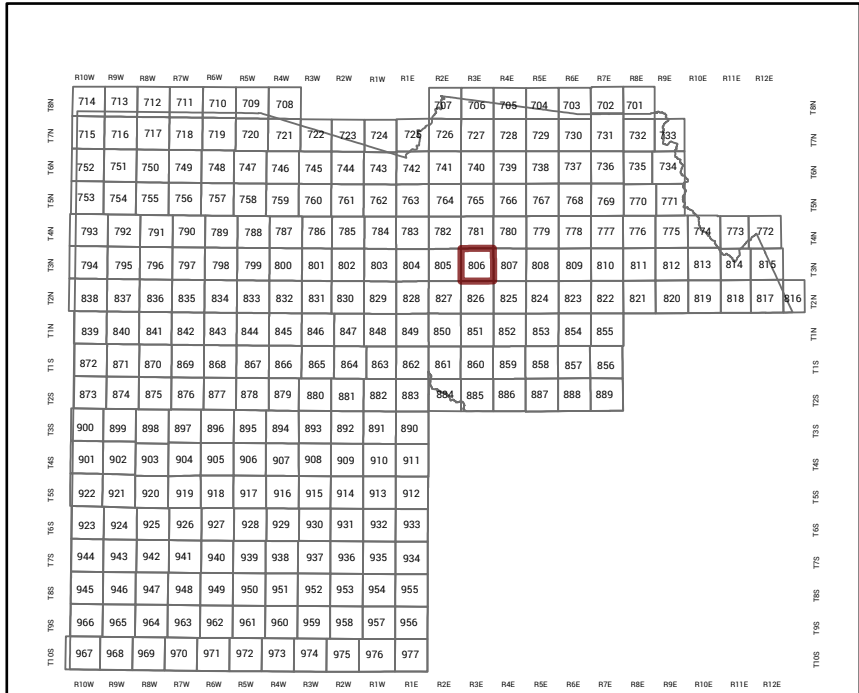


MARICOPA COUNTY STATE OF ARIZONA

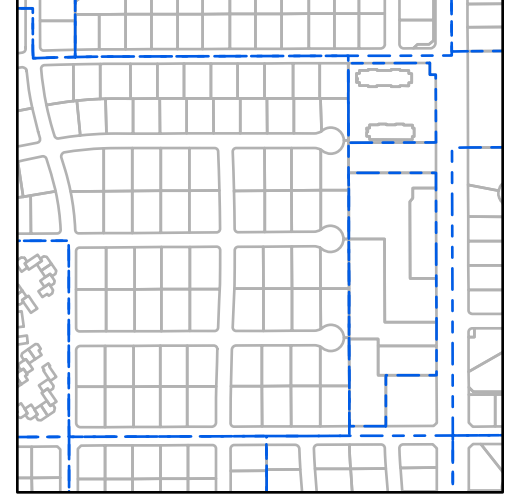
PT. SECTION 5 T03N R03E

806 - 05 - 04 - 04

TOWNSHIP & RANGE SECTION 1/4 SECTION 1/4 1/4 SECTION



Parcels updated within this map



MARICOPA COUNTY ASSESSOR'S OFFICE 301 W. Jefferson Street Phoenix, AZ 85003

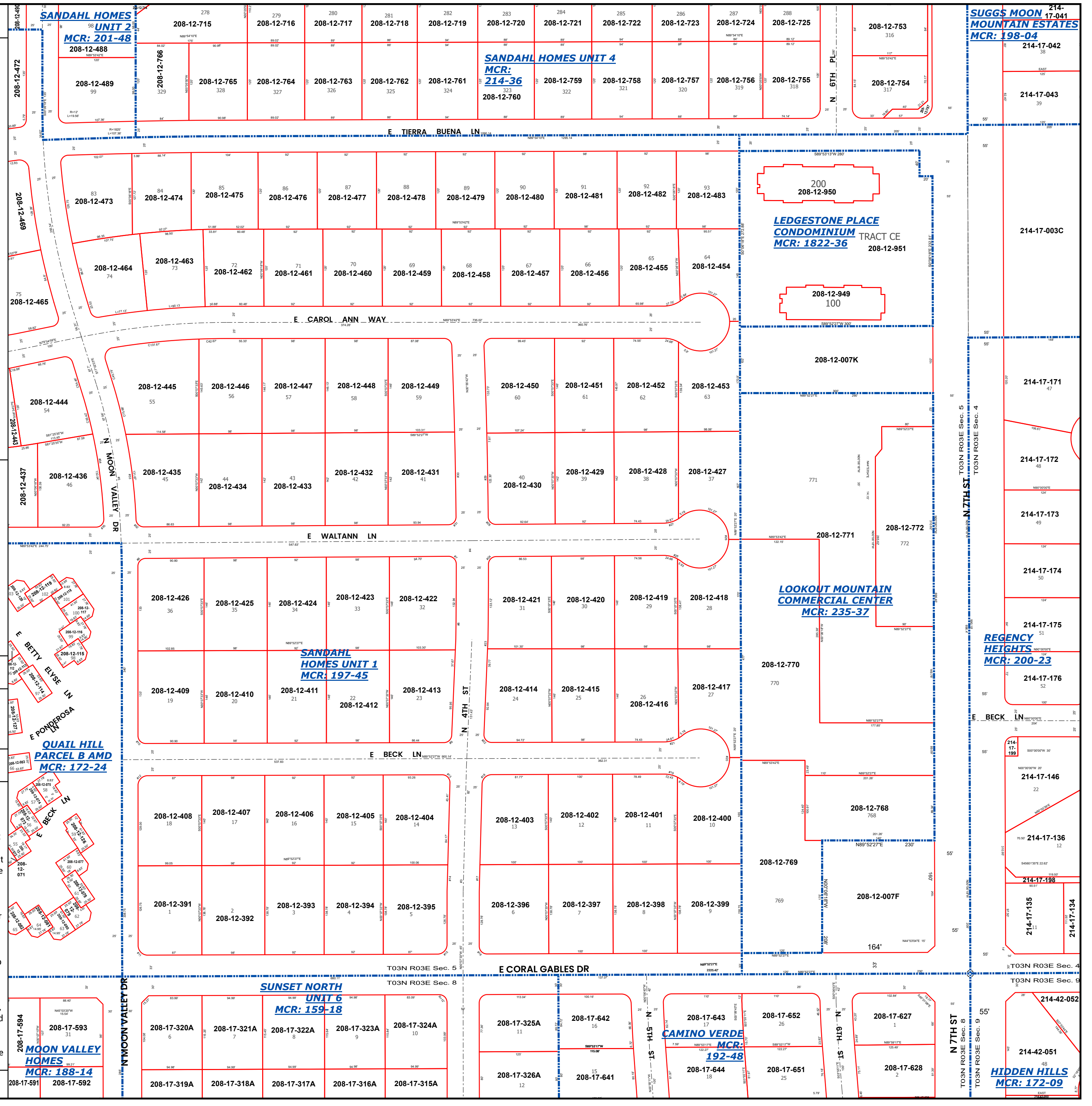
LEGEND: Tax Parcels, Sections, Subdivisions, Lots, Section Corners, Centerlines

Disclaimer - Indemnification CAUTION! USERS SHOULD INDEPENDENTLY RESEARCH AND VERIFY INFORMATION WITHIN THIS DATASET OR MAP BEFORE RELYING ON IT.

The Assessor's Office has compiled information within this dataset or map that it uses to identify, classify, and value real and personal property.

The Assessor does not guarantee that any information contained within this dataset or map is accurate, complete or current.

Map Reprint Date: 2/22/2026



Vertical text labels for subdivisions: SANDAHL HOMES UNIT 2, MCR: 201-48; SANDAHL HOMES UNIT 4, MCR: 214-36; SANDAHL HOMES UNIT 1, MCR: 197-45; QUAIL HILL PARCEL B AMD, MCR: 172-24; SUNSET NORTH UNIT 6, MCR: 159-18; MOON VALLEY HOMES, MCR: 188-14.

Vertical text labels for subdivisions: SUGGS MOON MOUNTAIN ESTATES, MCR: 198-04; LEDGESTONE PLACE CONDOMINIUM, MCR: 1822-36; LOOKOUT MOUNTAIN COMMERCIAL CENTER, MCR: 235-37; REGENCY HEIGHTS, MCR: 200-23; CAMINO VERDE, MCR: 192-48; HIDDEN HILLS, MCR: 172-09.