

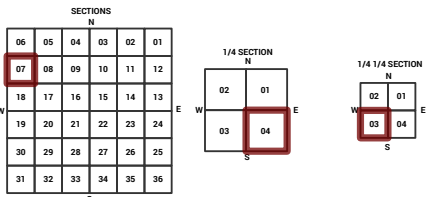
MARICOPA COUNTY
STATE OF ARIZONA

PT. SECTION 7 T03N R05E

808 - 07 - 04 - 03

TOWNSHIP & RANGE SECTION 1/4 SECTION 1/4 1/4 SECTION

Grid map showing section numbers from 714 to 917. Section 08 is highlighted in red.



Parcels updated within this map



MARICOPA COUNTY
ASSESSOR'S OFFICE
301 W. Jefferson Street
Phoenix, AZ 85003



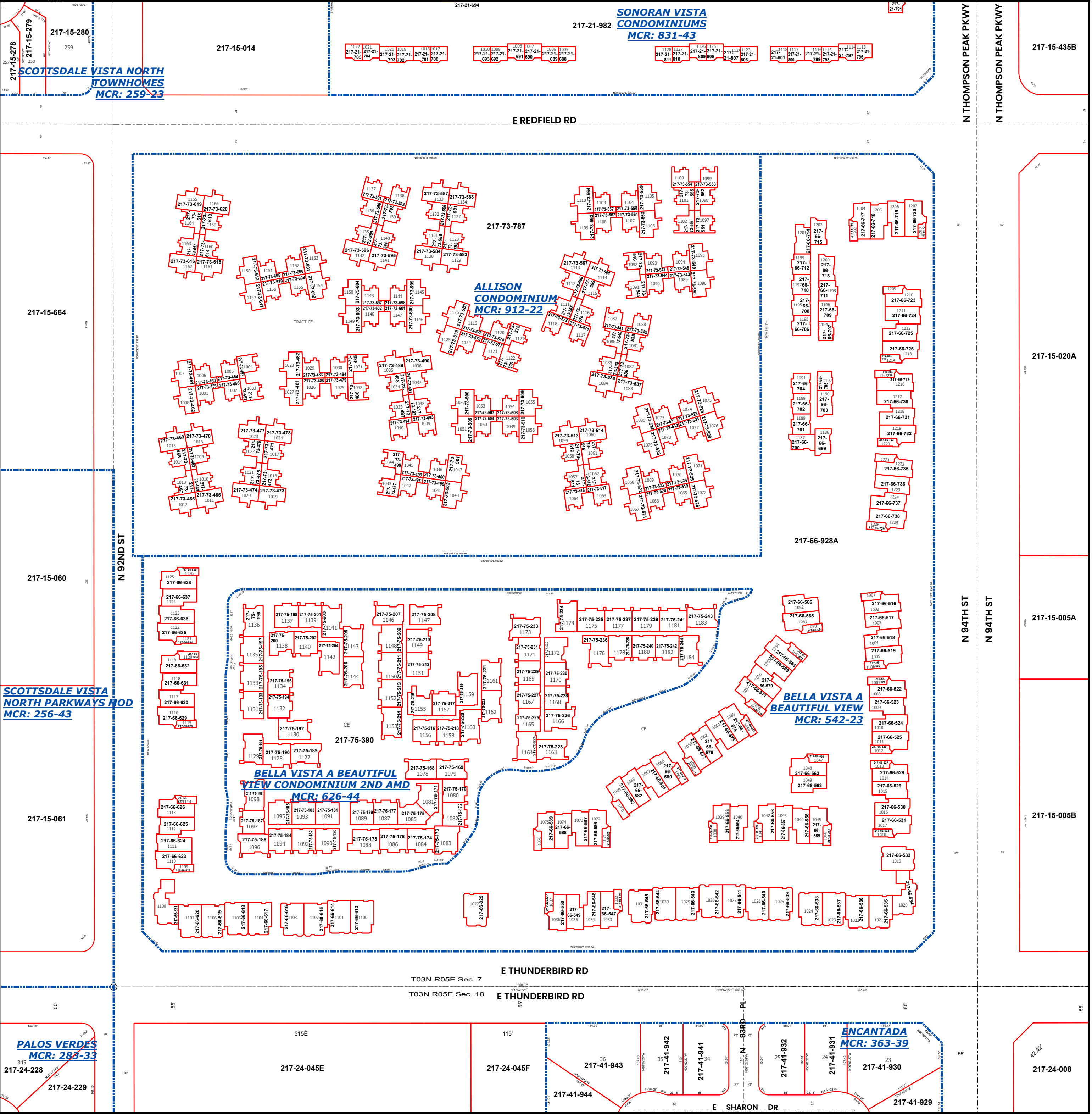
LEGEND: Tax Parcels (red outline), Sections (dotted line), Subdivisions (dashed line), Lots (solid line), Section Corners (circle with cross), Centerlines (dashed line)

Disclaimer - Indemnification
CAUTION! USERS SHOULD INDEPENDENTLY RESEARCH AND VERIFY INFORMATION WITHIN THIS DATASET OR MAP BEFORE RELYING ON IT.

The Assessor's Office has compiled information within this dataset or map that it uses to identify, classify, and value real and personal property. Please contact the Assessor's Office at 602 506-3406 if you believe any information is incomplete, out of date, or incorrect so that appropriate corrections can be addressed. Please note that a statutory process is also available to correct errors pursuant to Arizona Revised Statutes 42-16254.

The Assessor does not guarantee that any information contained within this dataset or map is accurate, complete or current. In many instances, the Assessor has gathered information from independent sources and made it available within this dataset or map, and the original information may have contained errors and omissions. Errors and omissions may have occurred in the process of gathering, interpreting, and reporting the information. Information within this dataset or map is not updated "real time." In addition, Users are cautioned that the process used within this dataset or map to illustrate the boundaries of adjacent parcels is not always consistent with the recorded documents for such parcels. The parcel boundaries depicted within this dataset or maps are for illustrative purposes only, and the exact relationship of adjacent parcels should be independently researched and verified. The information provided within this dataset or map is not the equivalent of a title report or a real estate survey. Users should independently research, investigate, and verify all information before relying on it in the preparation of legal documents.

Map Reprint Date: 2/23/2026



PALOS VERDES
MCR: 283-33

SCOTTSDALE VISTA
NORTH PARKWAYS MOD
MCR: 256-43

217-15-061

217-15-060

217-15-664

217-15-278
217-15-279
217-15-280

217-15-014

217-21-982
SONORAN VISTA
CONDOMINIUMS
MCR: 831-43

217-15-435B

217-73-618
217-73-619
217-73-620
217-73-621
217-73-622
217-73-623
217-73-624
217-73-625
217-73-626
217-73-627
217-73-628
217-73-629
217-73-630
217-73-631
217-73-632
217-73-633
217-73-634
217-73-635
217-73-636
217-73-637
217-73-638
217-73-639
217-73-640
217-73-641
217-73-642
217-73-643
217-73-644
217-73-645
217-73-646
217-73-647
217-73-648
217-73-649
217-73-650
217-73-651
217-73-652
217-73-653
217-73-654
217-73-655
217-73-656
217-73-657
217-73-658
217-73-659
217-73-660
217-73-661
217-73-662
217-73-663
217-73-664
217-73-665
217-73-666
217-73-667
217-73-668
217-73-669
217-73-670
217-73-671
217-73-672
217-73-673
217-73-674
217-73-675
217-73-676
217-73-677
217-73-678
217-73-679
217-73-680
217-73-681
217-73-682
217-73-683
217-73-684
217-73-685
217-73-686
217-73-687
217-73-688
217-73-689
217-73-690
217-73-691
217-73-692
217-73-693
217-73-694
217-73-695
217-73-696
217-73-697
217-73-698
217-73-699
217-73-700

217-75-188
217-75-189
217-75-190
217-75-191
217-75-192
217-75-193
217-75-194
217-75-195
217-75-196
217-75-197
217-75-198
217-75-199
217-75-200
217-75-201
217-75-202
217-75-203
217-75-204
217-75-205
217-75-206
217-75-207
217-75-208
217-75-209
217-75-210
217-75-211
217-75-212
217-75-213
217-75-214
217-75-215
217-75-216
217-75-217
217-75-218
217-75-219
217-75-220
217-75-221
217-75-222
217-75-223
217-75-224
217-75-225
217-75-226
217-75-227
217-75-228
217-75-229
217-75-230
217-75-231
217-75-232
217-75-233
217-75-234
217-75-235
217-75-236
217-75-237
217-75-238
217-75-239
217-75-240
217-75-241
217-75-242
217-75-243
217-75-244
217-75-245
217-75-246
217-75-247
217-75-248
217-75-249
217-75-250
217-75-251
217-75-252
217-75-253
217-75-254
217-75-255
217-75-256
217-75-257
217-75-258
217-75-259
217-75-260
217-75-261
217-75-262
217-75-263
217-75-264
217-75-265
217-75-266
217-75-267
217-75-268
217-75-269
217-75-270
217-75-271
217-75-272
217-75-273
217-75-274
217-75-275
217-75-276
217-75-277
217-75-278
217-75-279
217-75-280
217-75-281
217-75-282
217-75-283
217-75-284
217-75-285
217-75-286
217-75-287
217-75-288
217-75-289
217-75-290
217-75-291
217-75-292
217-75-293
217-75-294
217-75-295
217-75-296
217-75-297
217-75-298
217-75-299
217-75-300

217-24-228
217-24-229
217-24-045E
217-24-045F
217-41-943
217-41-944
217-41-942
217-41-941
217-41-932
217-41-931
217-41-930
217-41-929

217-73-787
ALLISON
CONDOMINIUM
MCR: 912-22

BELLA VISTA A BEAUTIFUL
VIEW CONDOMINIUM 2ND AMD
MCR: 626-44

217-66-928A

BELLA VISTA A
BEAUTIFUL VIEW
MCR: 542-23

217-66-718
217-66-719
217-66-720
217-66-721
217-66-722
217-66-723
217-66-724
217-66-725
217-66-726
217-66-727
217-66-728
217-66-729
217-66-730
217-66-731
217-66-732
217-66-733
217-66-734
217-66-735
217-66-736
217-66-737
217-66-738
217-66-739

217-66-516
217-66-517
217-66-518
217-66-519
217-66-520
217-66-521
217-66-522
217-66-523
217-66-524
217-66-525
217-66-526
217-66-527
217-66-528
217-66-529
217-66-530
217-66-531
217-66-532
217-66-533
217-66-534
217-66-535
217-66-536
217-66-537
217-66-538
217-66-539
217-66-540
217-66-541
217-66-542
217-66-543
217-66-544
217-66-545
217-66-546
217-66-547
217-66-548
217-66-549
217-66-550
217-66-551
217-66-552
217-66-553
217-66-554
217-66-555
217-66-556
217-66-557
217-66-558
217-66-559
217-66-560
217-66-561
217-66-562
217-66-563
217-66-564
217-66-565
217-66-566
217-66-567
217-66-568
217-66-569
217-66-570
217-66-571
217-66-572
217-66-573
217-66-574
217-66-575
217-66-576
217-66-577
217-66-578
217-66-579
217-66-580
217-66-581
217-66-582
217-66-583
217-66-584
217-66-585
217-66-586
217-66-587
217-66-588
217-66-589
217-66-590
217-66-591
217-66-592
217-66-593
217-66-594
217-66-595
217-66-596
217-66-597
217-66-598
217-66-599
217-66-600

ENCANTADA
MCR: 363-39
217-24-008