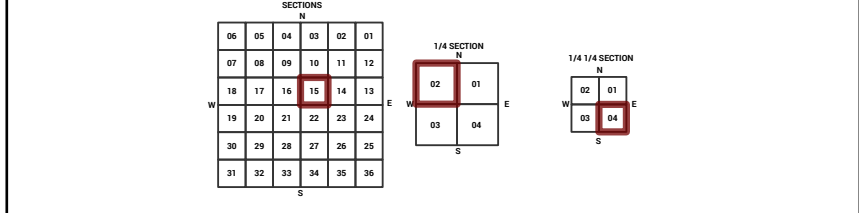
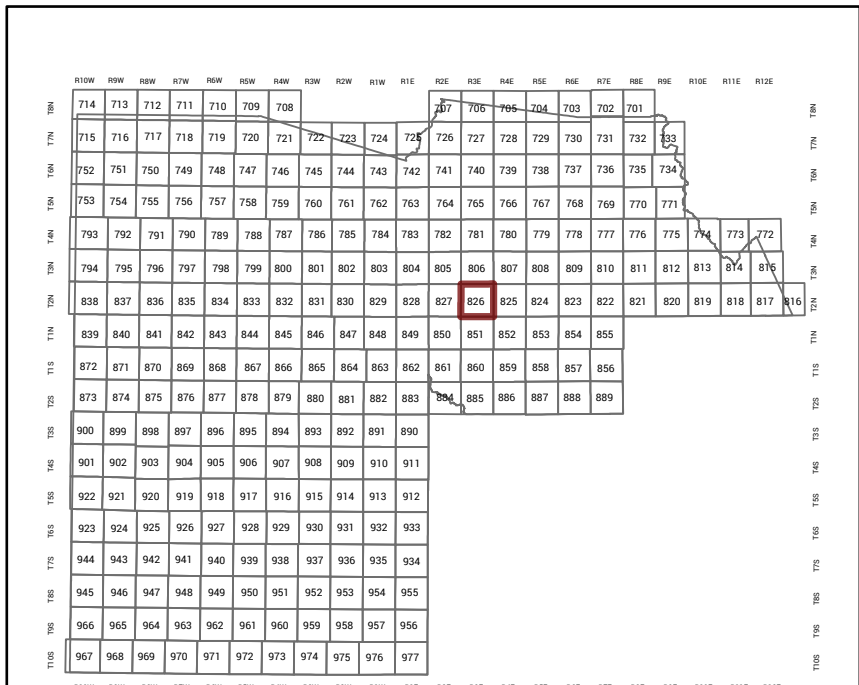


MARICOPA COUNTY
STATE OF ARIZONA

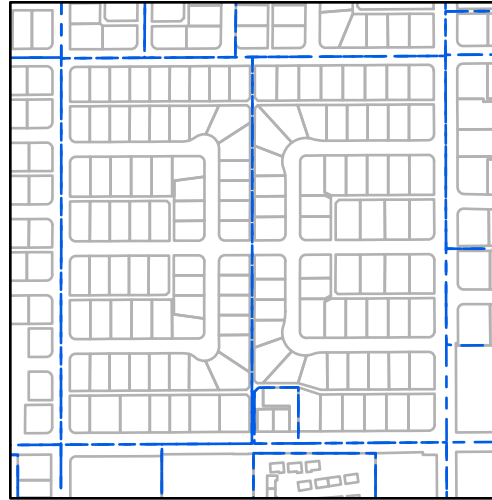
PT. SECTION 15 T02N R03E

826 - 15 - 02 - 04

TOWNSHIP & RANGE SECTION 1/4 SECTION 1/4 1/4 SECTION



Parcels updated within this map



MARICOPA COUNTY
ASSESSOR'S OFFICE
301 W. Jefferson Street
Phoenix, AZ 85003
MARICOPA COUNTY
ASSESSOR'S OFFICE
<https://mcaassessor.maricopa.gov>

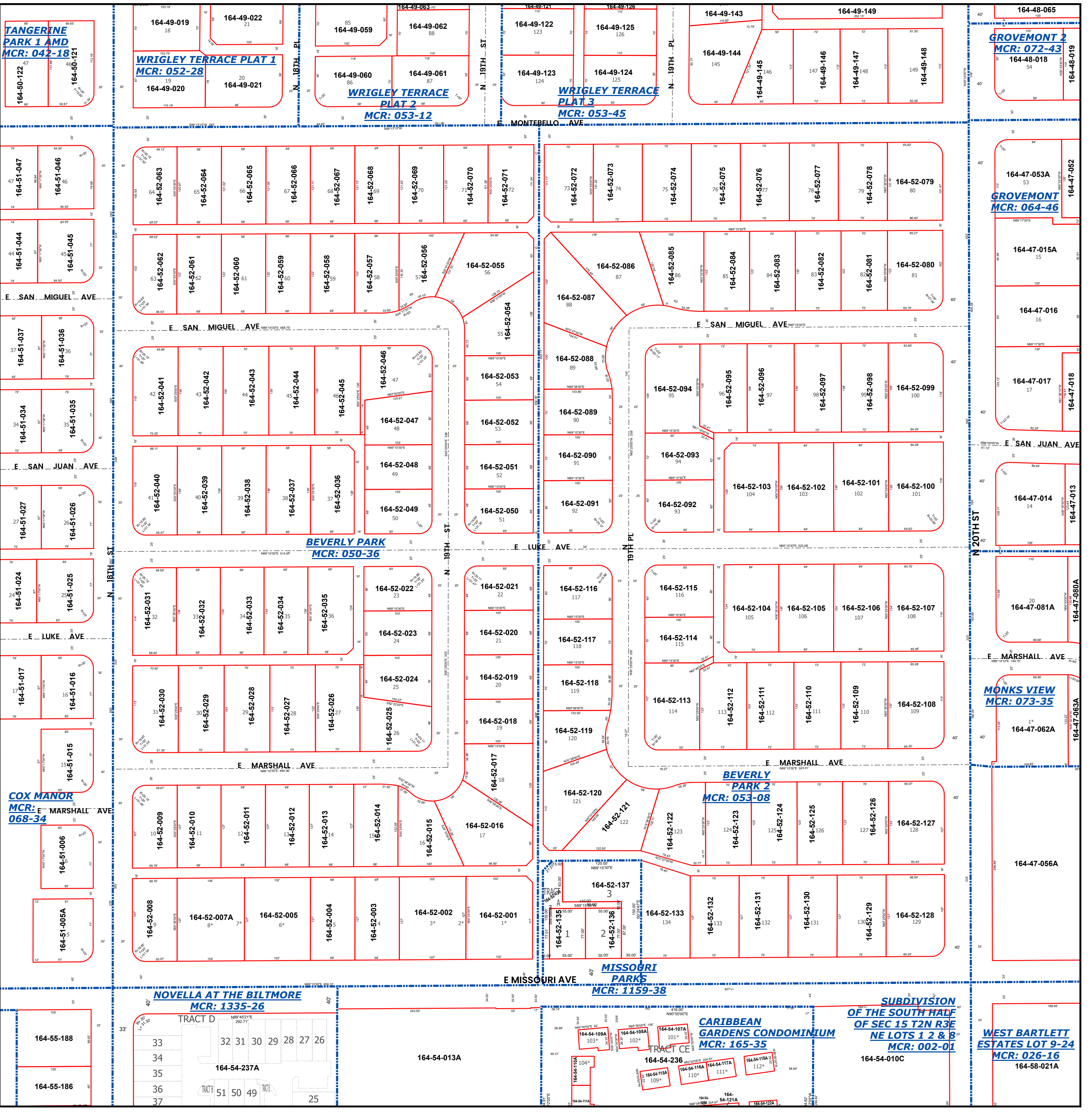
LEGEND: Tax Parcels Sections Subdivisions
Lots Section Corners Centerlines

Disclaimer - Indemnification
CAUTION! USERS SHOULD INDEPENDENTLY RESEARCH AND VERIFY INFORMATION WITHIN THIS DATASET OR MAP BEFORE RELYING ON IT.

The Assessor's Office has compiled information within this dataset or map that it uses to identify, classify, and value real and personal property. Please contact the Assessor's Office at 602 506-3406 if you believe any information is incomplete, out of date, or incorrect so that appropriate corrections can be addressed. Please note that a statutory process is also available to correct errors pursuant to Arizona Revised Statutes 42-16254.

The Assessor does not guarantee that any information contained within this dataset or map is accurate, complete or current. In many instances, the Assessor has gathered information from independent sources and made it available within this dataset or map, and the original information may have contained errors and omissions. Errors and omissions may have occurred in the process of gathering, interpreting, and reporting the information. Information within this dataset or map is not updated "real time." In addition, Users are cautioned that the process used within this dataset or map to illustrate the boundaries of adjacent parcels is not always consistent with the recorded documents for such parcels. The parcel boundaries depicted within this dataset or maps are for illustrative purposes only, and the exact relationship of adjacent parcels should be independently researched and verified. The information provided within this dataset or map is not the equivalent of a title report or a real estate survey. Users should independently research, investigate, and verify all information before relying on it or using it in the preparation of legal documents.

Map Reprint Date: 2/24/2026



TANGERINE PARK 1 AMD
MCR: 042-18-121

WRIGLEY TERRACE PLAT 1
MCR: 052-28

WRIGLEY TERRACE PLAT 2
MCR: 053-12

WRIGLEY TERRACE PLAT 3
MCR: 053-45

GROVEMONT 2
MCR: 072-43

164-51-047
164-51-046

164-51-044
164-51-045

164-51-037
164-51-036

164-51-034
164-51-035

164-51-027
164-51-026

164-51-024
164-51-025

164-51-017
164-51-016

164-51-015

164-51-006

164-51-005A

164-55-188
164-55-186

164-49-019
164-49-022
164-49-059
164-49-062
164-49-060
164-49-061
164-49-020
164-49-021

164-52-063
164-52-064
164-52-065
164-52-066
164-52-067
164-52-068
164-52-069
164-52-070
164-52-071

164-52-062
164-52-061
164-52-060
164-52-059
164-52-058
164-52-057
164-52-056
164-52-055

164-52-041
164-52-042
164-52-043
164-52-044
164-52-045
164-52-046
164-52-047
164-52-048
164-52-049

164-52-040
164-52-039
164-52-038
164-52-037
164-52-036
164-52-035
164-52-034
164-52-033
164-52-032
164-52-031

164-52-023
164-52-022
164-52-021
164-52-020
164-52-019
164-52-018
164-52-017
164-52-016

164-52-025
164-52-024
164-52-023
164-52-022
164-52-021
164-52-020
164-52-019
164-52-018
164-52-017
164-52-016

164-52-009
164-52-010
164-52-011
164-52-012
164-52-013
164-52-014
164-52-015
164-52-016

164-52-008
164-52-007A
164-52-005
164-52-004
164-52-003
164-52-002
164-52-001

164-54-013A
164-54-237A
164-54-103A
164-54-102A
164-54-101A
164-54-100A
164-54-099A
164-54-098A
164-54-097A
164-54-096A
164-54-095A
164-54-094A
164-54-093A
164-54-092A
164-54-091A
164-54-090A
164-54-089A
164-54-088A
164-54-087A
164-54-086A
164-54-085A
164-54-084A
164-54-083A
164-54-082A
164-54-081A
164-54-080A

164-49-122
164-49-125
164-49-123
164-49-124
164-49-143
164-49-144
164-49-145
164-49-146
164-49-147
164-49-148
164-49-149
164-49-146
164-49-147
164-49-148
164-49-149

164-52-072
164-52-073
164-52-074
164-52-075
164-52-076
164-52-077
164-52-078
164-52-079

164-52-086
164-52-085
164-52-084
164-52-083
164-52-082
164-52-081
164-52-080
164-52-087
164-52-088
164-52-089
164-52-090
164-52-091
164-52-092
164-52-093
164-52-094
164-52-095
164-52-096
164-52-097
164-52-098
164-52-099

164-52-103
164-52-102
164-52-101
164-52-100
164-52-104
164-52-103
164-52-102
164-52-101
164-52-100

164-52-116
164-52-115
164-52-114
164-52-113
164-52-112
164-52-111
164-52-110
164-52-109
164-52-108
164-52-117
164-52-118
164-52-119
164-52-120
164-52-121
164-52-122
164-52-123

164-52-116
164-52-115
164-52-114
164-52-113
164-52-112
164-52-111
164-52-110
164-52-109
164-52-108
164-52-107
164-52-106
164-52-105
164-52-104
164-52-103
164-52-102
164-52-101
164-52-100

164-52-120
164-52-119
164-52-118
164-52-117
164-52-116
164-52-115
164-52-114
164-52-113
164-52-112
164-52-111
164-52-110
164-52-109
164-52-108
164-52-107
164-52-106
164-52-105
164-52-104
164-52-103
164-52-102
164-52-101
164-52-100

164-52-120
164-52-119
164-52-118
164-52-117
164-52-116
164-52-115
164-52-114
164-52-113
164-52-112
164-52-111
164-52-110
164-52-109
164-52-108
164-52-107
164-52-106
164-52-105
164-52-104
164-52-103
164-52-102
164-52-101
164-52-100

164-52-137
164-52-136
164-52-135
164-52-134
164-52-133
164-52-132
164-52-131
164-52-130
164-52-129
164-52-128

164-54-103A
164-54-102A
164-54-101A
164-54-100A
164-54-099A
164-54-098A
164-54-097A
164-54-096A
164-54-095A
164-54-094A
164-54-093A
164-54-092A
164-54-091A
164-54-090A
164-54-089A
164-54-088A
164-54-087A
164-54-086A
164-54-085A
164-54-084A
164-54-083A
164-54-082A
164-54-081A
164-54-080A

164-48-065
164-48-018
164-48-019

164-47-053A
164-47-015A
164-47-016
164-47-017
164-47-018

164-47-014
164-47-013

164-47-014
164-47-013

164-47-081A
164-47-080A

164-47-062A
164-47-063A

164-47-056A

164-47-056A

164-47-056A

164-58-021A