

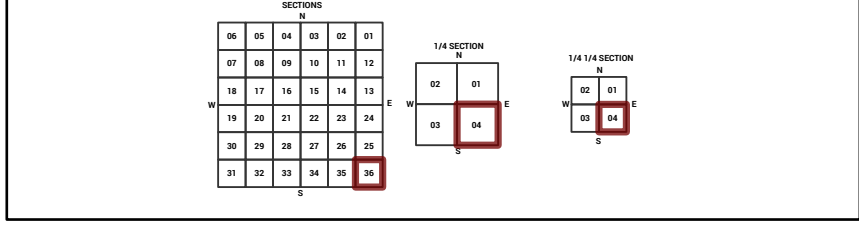
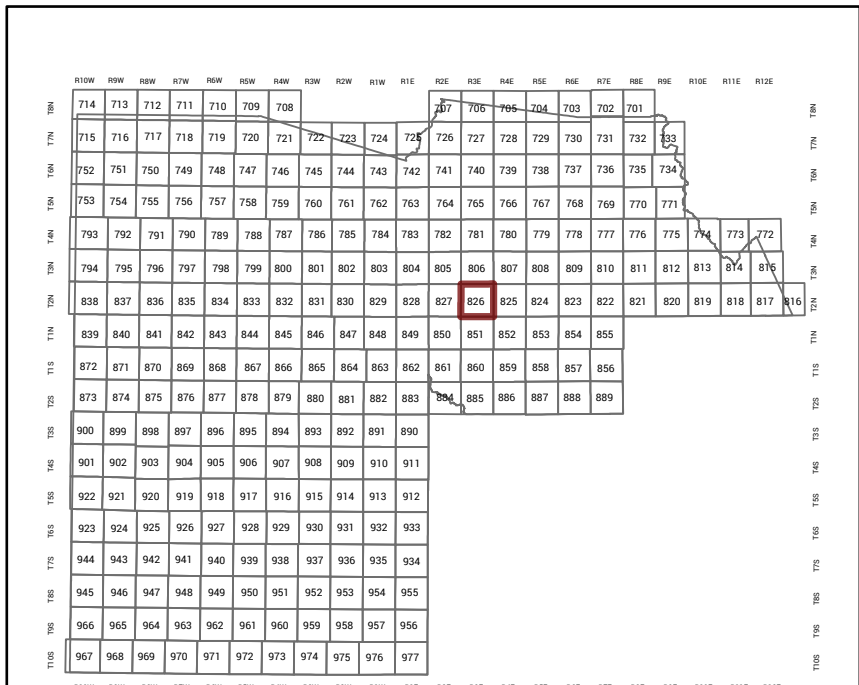
MARICOPA COUNTY

STATE OF ARIZONA

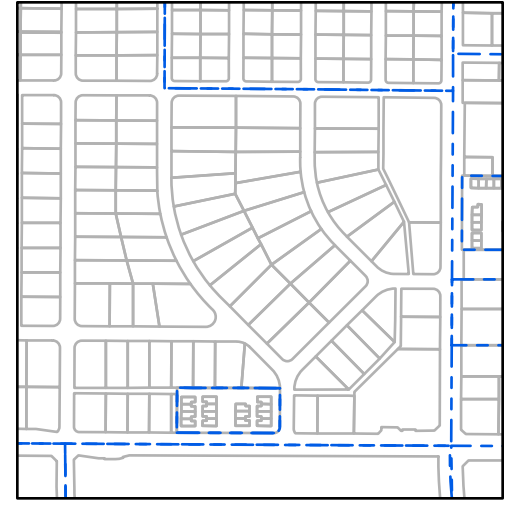
PT. SECTION 36 T02N R03E

826 - 36 - 04 - 04

TOWNSHIP & RANGE SECTION 1/4 SECTION 1/4 1/4 SECTION



Parcels updated within this map



MARICOPA COUNTY
ASSESSOR'S OFFICE
301 W. Jefferson Street
Phoenix, AZ 85003

MARICOPA COUNTY
ASSESSOR'S OFFICE
<https://mcassessor.maricopa.gov>

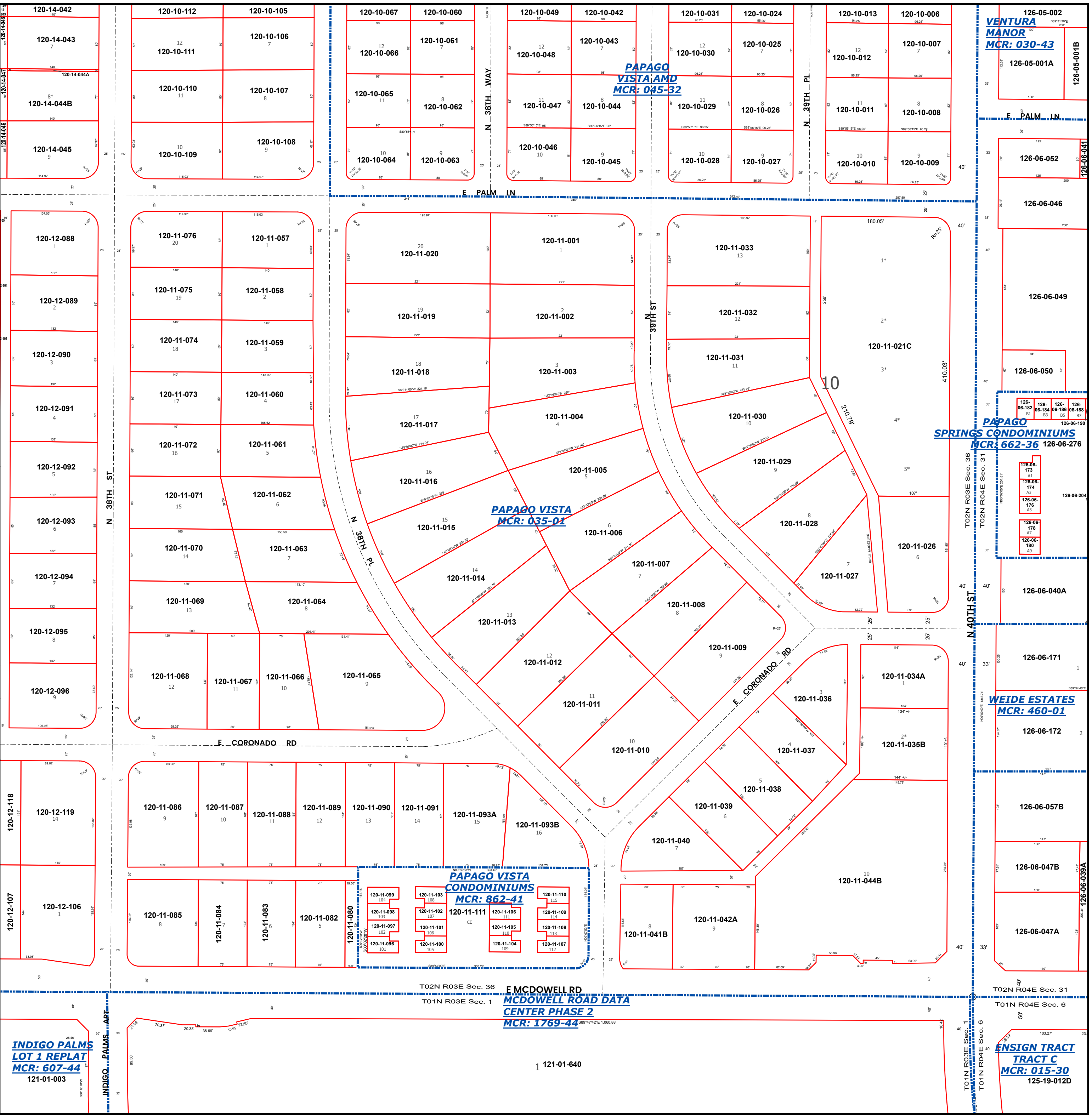
LEGEND: Tax Parcels (red outline), Sections (dashed line), Subdivisions (dotted line), Lots (small squares), Section Corners (circle with cross), Centerlines (dashed line)

Disclaimer - Indemnification
CAUTION! USERS SHOULD INDEPENDENTLY RESEARCH AND VERIFY INFORMATION WITHIN THIS DATASET OR MAP BEFORE RELYING ON IT.

The Assessor's Office has compiled information within this dataset or map that it uses to identify, classify, and value real and personal property. Please contact the Assessor's Office at 602 506-3406 if you believe any information is incomplete, out of date, or incorrect so that appropriate corrections can be addressed. Please note that a statutory process is also available to correct errors pursuant to Arizona Revised Statutes 42-16254.

The Assessor does not guarantee that any information contained within this dataset or map is accurate, complete or current. In many instances, the Assessor has gathered information from independent sources and made it available within this dataset or map, and the original information may have contained errors and omissions. Errors and omissions may have occurred in the process of gathering, interpreting, and reporting the information. Information within this dataset or map is not updated "real time." In addition, Users are cautioned that the process used within this dataset or map to illustrate the boundaries of adjacent parcels is not always consistent with the recorded documents for such parcels. The parcel boundaries depicted within this dataset or maps are for illustrative purposes only, and the exact relationship of adjacent parcels should be independently researched and verified. The information provided within this dataset or map is not the equivalent of a title report or a real estate survey. Users should independently research, investigate, and verify all information before relying on it or using it in the preparation of legal documents.

Map Reprint Date: 2/24/2026



126-05-002
VENTURA MANOR
MCR: 030-43
126-05-001A
126-05-001B

126-06-052
126-06-046
126-06-049
126-06-050

126-06-173
126-06-174
126-06-176
126-06-177
126-06-178
126-06-179

PAPAGO SPRINGS CONDOMINIUMS
MCR: 662-36
126-06-276
126-06-204

126-06-040A
126-06-171
126-06-172

WEIDE ESTATES
MCR: 460-01
126-06-057B
126-06-047B
126-06-047A

126-06-039A
126-06-039B

126-06-039C
126-06-039D

ENSIGN TRACT
MCR: 015-30
125-19-012D

PAPAGO VISTA CONDOMINIUMS
MCR: 862-41
121-01-640

INDIGO PALMS LOT 1 REPLAT
MCR: 607-44
121-01-003

ENSIGN TRACT
MCR: 015-30
125-19-012D