

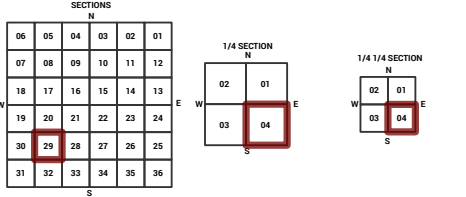
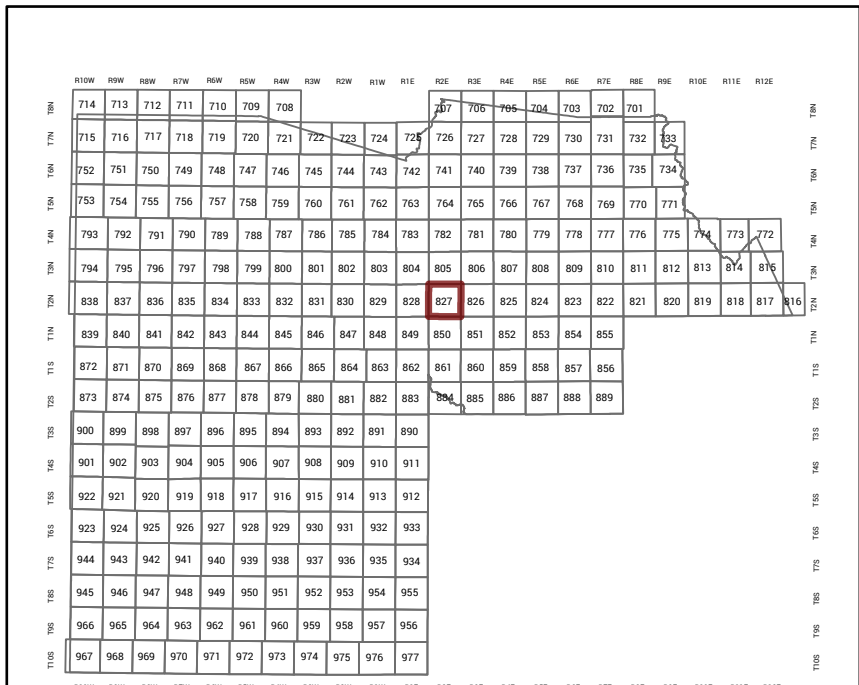
MARICOPA COUNTY

STATE OF ARIZONA

PT. SECTION 29 T02N R02E

827 - 29 - 04 - 04

TOWNSHIP & RANGE SECTION 1/4 SECTION 1/4 1/4 SECTION



Parcels updated within this map



MARICOPA COUNTY ASSESSOR'S OFFICE
301 W. Jefferson Street
Phoenix, AZ 85003
<https://mcaassessor.maricopa.gov>

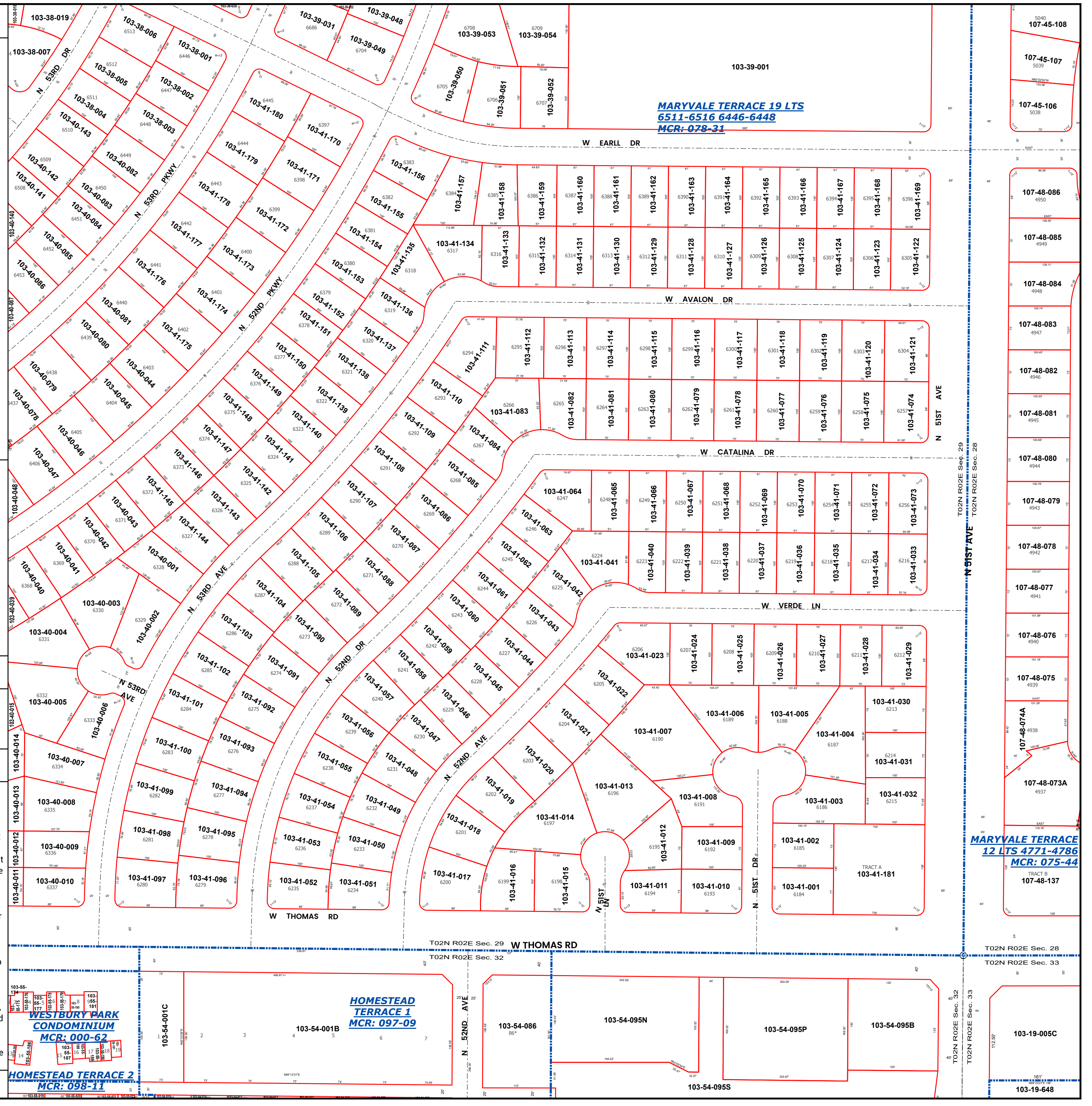
LEGEND: Tax Parcels, Sections, Subdivisions, Lots, Section Corners, Centerlines

Disclaimer - Indemnification
CAUTION! USERS SHOULD INDEPENDENTLY RESEARCH AND VERIFY INFORMATION WITHIN THIS DATASET OR MAP BEFORE RELYING ON IT.

The Assessor's Office has compiled information within this dataset or map that it uses to identify, classify, and value real and personal property. Please contact the Assessor's Office at 602 506-3406 if you believe any information is incomplete, out of date, or incorrect so that appropriate corrections can be addressed. Please note that a statutory process is also available to correct errors pursuant to Arizona Revised Statutes 42-16254.

The Assessor does not guarantee that any information contained within this dataset or map is accurate, complete or current. In many instances, the Assessor has gathered information from independent sources and made it available within this dataset or map, and the original information may have contained errors and omissions. Errors and omissions may have occurred in the process of gathering, interpreting, and reporting the information. Information within this dataset or map is not updated "real time." In addition, Users are cautioned that the process used within this dataset or map to illustrate the boundaries of adjacent parcels is not always consistent with the recorded documents for such parcels. The parcel boundaries depicted within this dataset or maps are for illustrative purposes only, and the exact relationship of adjacent parcels should be independently researched and verified. The information provided within this dataset or map is not the equivalent of a title report or a real estate survey. Users should independently research, investigate, and verify all information before relying on it or using it in the preparation of legal documents.

Map Reprint Date: 2/24/2026



MARYVALE TERRACE 19 LTS
6511-6516 6446-6448
MCR: 078-31

107-45-108
107-45-107
107-45-106

107-48-086
107-48-085
107-48-084

107-48-083
107-48-082
107-48-081

107-48-080
107-48-079
107-48-078

107-48-077
107-48-076
107-48-075

107-48-074A
107-48-073A

MARYVALE TERRACE 12 LTS 4771-4786
MCR: 075-44

103-19-005C
103-19-648

HOMESTEAD TERRACE 1
MCR: 097-09

HOMESTEAD TERRACE 2
MCR: 098-11

WESTBURY PARK CONDOMINIUM
MCR: 000-62

103-54-001C
103-54-001B
103-54-086
103-54-095N
103-54-095P
103-54-095B
103-54-095S