

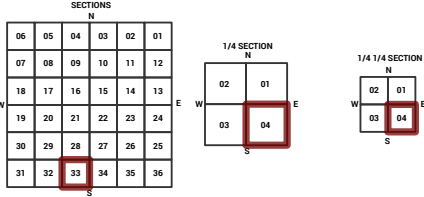
MARICOPA COUNTY STATE OF ARIZONA

PT. SECTION 33 T02N R02E

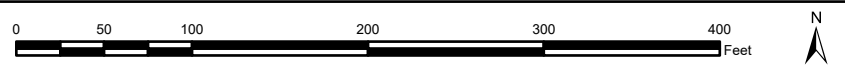
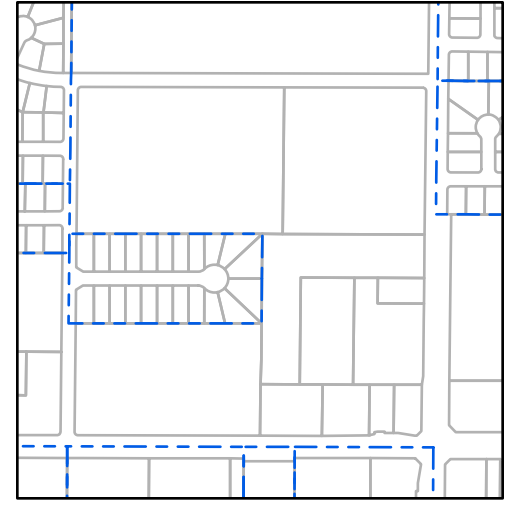
827 - 33 - 04 - 04

TOWNSHIP & RANGE SECTION 1/4 SECTION 1/4 1/4 SECTION

Grid table showing section numbers from 714 to 916.



Parcels updated within this map



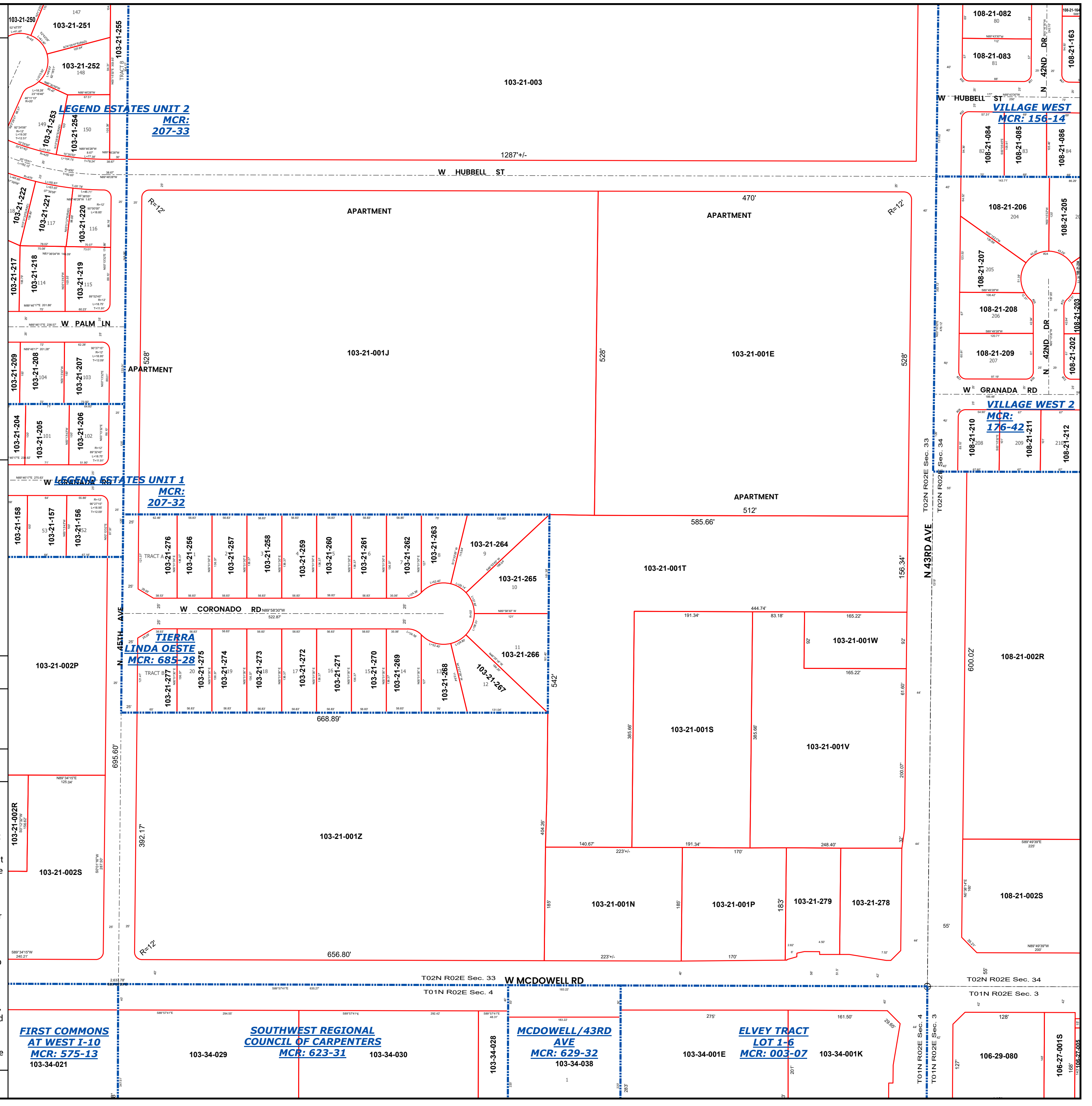
MARICOPA COUNTY ASSESSOR'S OFFICE 301 W. Jefferson Street Phoenix, AZ 85003

LEGEND: Tax Parcels, Sections, Subdivisions, Lots, Section Corners, Centerlines

Disclaimer - Indemnification CAUTION! USERS SHOULD INDEPENDENTLY RESEARCH AND VERIFY INFORMATION WITHIN THIS DATASET OR MAP BEFORE RELYING ON IT.

The Assessor's Office has compiled information within this dataset or map that it uses to identify, classify, and value real and personal property.

The Assessor does not guarantee that any information contained within this dataset or map is accurate, complete or current.



FIRST COMMONS AT WEST I-10 MCR: 575-13 103-34-021

SOUTHWEST REGIONAL COUNCIL OF CARPENTERS MCR: 623-31 103-34-029 103-34-030

MCDOWELL/43RD AVE MCR: 629-32 103-34-028 103-34-038

ELVEY TRACT LOT 1-6 MCR: 003-07 103-34-001E 103-34-001K

106-29-080 106-27-001S