

MARICOPA COUNTY

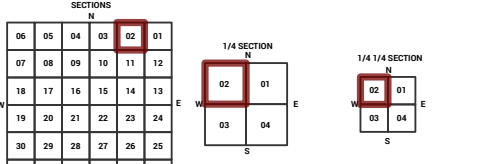
STATE OF ARIZONA

PT. SECTION 2 T02N R01E

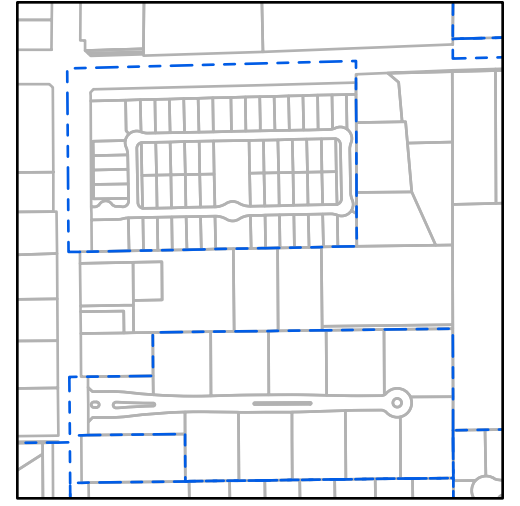
828 - 02 - 02 - 02

TOWNSHIP & RANGE SECTION 1/4 SECTION 1/4 1/4 SECTION

| | | | | | | | | | | | | | |
|-----|-----|-----|-----|-----|-----|-----|-----|-----|-----|-----|-----|-----|-----|
| 714 | 713 | 712 | 711 | 710 | 709 | 708 | 707 | 706 | 705 | 704 | 703 | 702 | 701 |
| 715 | 716 | 717 | 718 | 719 | 720 | 721 | 722 | 723 | 724 | 725 | 726 | 727 | 728 |
| 752 | 751 | 750 | 749 | 748 | 747 | 746 | 745 | 744 | 743 | 742 | 741 | 740 | 739 |
| 753 | 754 | 755 | 756 | 757 | 758 | 759 | 760 | 761 | 762 | 763 | 764 | 765 | 766 |
| 793 | 792 | 791 | 790 | 789 | 788 | 787 | 786 | 785 | 784 | 783 | 782 | 781 | 780 |
| 794 | 795 | 796 | 797 | 798 | 799 | 800 | 801 | 802 | 803 | 804 | 805 | 806 | 807 |
| 838 | 837 | 836 | 835 | 834 | 833 | 832 | 831 | 830 | 829 | 828 | 827 | 826 | 825 |
| 839 | 840 | 841 | 842 | 843 | 844 | 845 | 846 | 847 | 848 | 849 | 850 | 851 | 852 |
| 872 | 871 | 870 | 869 | 868 | 867 | 866 | 865 | 864 | 863 | 862 | 861 | 860 | 859 |
| 873 | 874 | 875 | 876 | 877 | 878 | 879 | 880 | 881 | 882 | 883 | 884 | 885 | 886 |
| 900 | 899 | 898 | 897 | 896 | 895 | 894 | 893 | 892 | 891 | 890 | 889 | 888 | 887 |
| 901 | 902 | 903 | 904 | 905 | 906 | 907 | 908 | 909 | 910 | 911 | 912 | 913 | 914 |
| 922 | 921 | 920 | 919 | 918 | 917 | 916 | 915 | 914 | 913 | 912 | 911 | 910 | 909 |
| 923 | 924 | 925 | 926 | 927 | 928 | 929 | 930 | 931 | 932 | 933 | 934 | 935 | 936 |
| 944 | 943 | 942 | 941 | 940 | 939 | 938 | 937 | 936 | 935 | 934 | 933 | 932 | 931 |
| 945 | 946 | 947 | 948 | 949 | 950 | 951 | 952 | 953 | 954 | 955 | 956 | 957 | 958 |
| 964 | 965 | 966 | 967 | 968 | 969 | 970 | 971 | 972 | 973 | 974 | 975 | 976 | 977 |
| 965 | 966 | 967 | 968 | 969 | 970 | 971 | 972 | 973 | 974 | 975 | 976 | 977 | 978 |



Parcels updated within this map



MARICOPA COUNTY ASSESSOR'S OFFICE
301 W. Jefferson Street
Phoenix, AZ 85003
<https://mcaassessor.maricopa.gov>

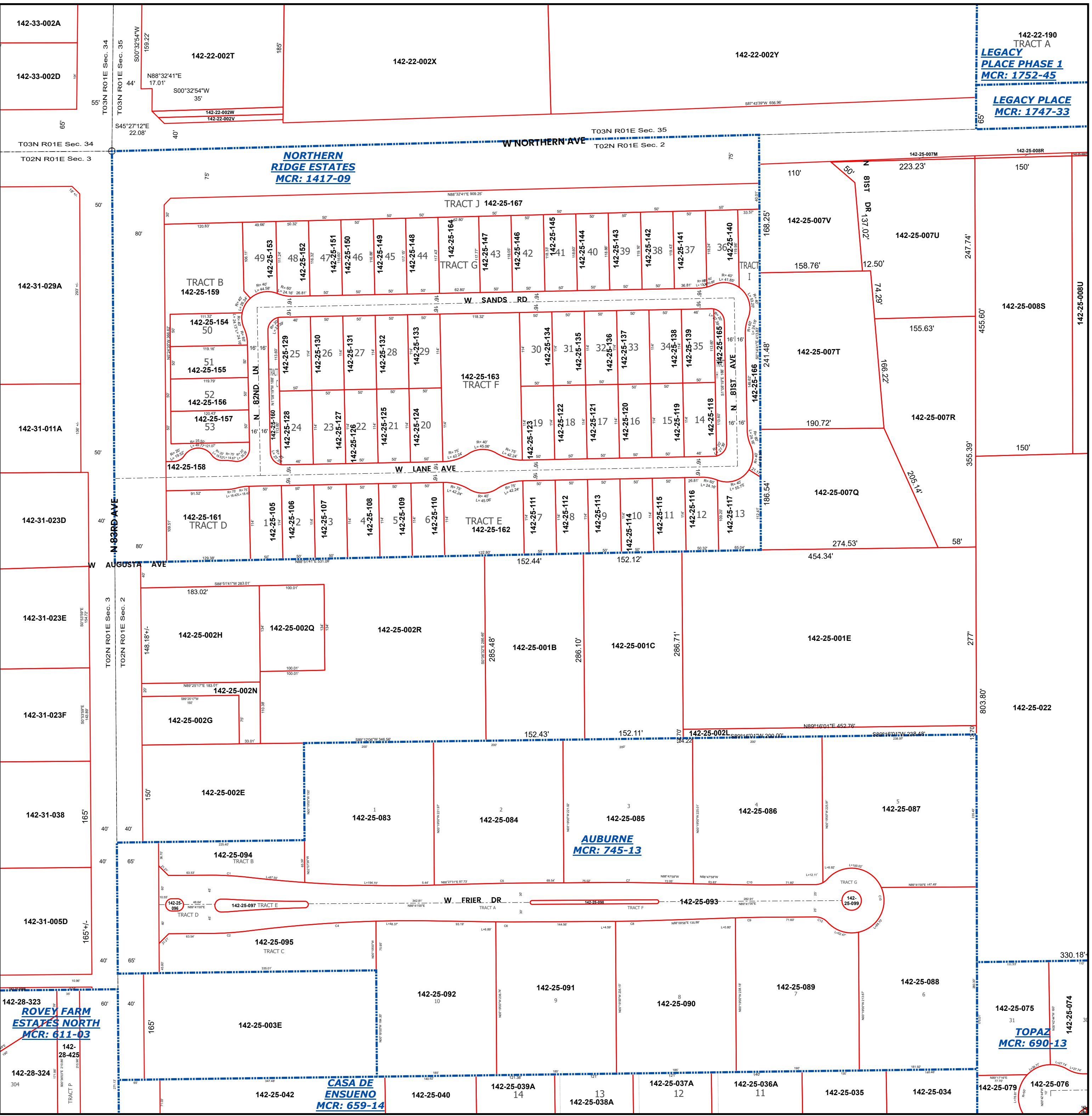
LEGEND: Tax Parcels, Sections, Subdivisions, Lots, Section Corners, Centerlines

Disclaimer - Indemnification
CAUTION! USERS SHOULD INDEPENDENTLY RESEARCH AND VERIFY INFORMATION WITHIN THIS DATASET OR MAP BEFORE RELYING ON IT.

The Assessor's Office has compiled information within this dataset or map that it uses to identify, classify, and value real and personal property. Please contact the Assessor's Office at 602 506-3406 if you believe any information is incomplete, out of date, or incorrect so that appropriate corrections can be addressed. Please note that a statutory process is also available to correct errors pursuant to Arizona Revised Statutes 42-16254.

The Assessor does not guarantee that any information contained within this dataset or map is accurate, complete or current. In many instances, the Assessor has gathered information from independent sources and made it available within this dataset or map, and the original information may have contained errors and omissions. Errors and omissions may have occurred in the process of gathering, interpreting, and reporting the information. Information within this dataset or map is not updated "real time." In addition, Users are cautioned that the process used within this dataset or map to illustrate the boundaries of adjacent parcels is not always consistent with the recorded documents for such parcels. The parcel boundaries depicted within this dataset or maps are for illustrative purposes only, and the exact relationship of adjacent parcels should be independently researched and verified. The information provided within this dataset or map is not the equivalent of a title report or a real estate survey. Users should independently research, investigate, and verify all information before relying on it or using it in the preparation of legal documents.

Map Reprint Date: 2/24/2026



142-22-190 TRACT A
LEGACY PLACE PHASE 1
MCR: 1752-45
LEGACY PLACE
MCR: 1747-33

TOPAZ
MCR: 690-13

CASA DE ENSUENO
MCR: 659-14

AUBURNE
MCR: 745-13

ROVEY FARM ESTATES NORTH
MCR: 611-03

142-28-324
TRACT P

142-28-323
TRACT B

142-31-005D

142-31-038

142-31-023F

142-31-023E

142-31-023D

142-31-011A

142-31-029A

142-33-002D

142-33-002A

142-25-079

142-25-075

142-25-088

142-25-087

142-25-086

142-25-085

142-25-084

142-25-083

142-25-082E

142-25-082Q

142-25-082R

142-25-082H

142-25-082G

142-25-082N

142-25-082M

142-25-082Y

142-25-082X

142-25-076

142-25-074

142-25-073

142-25-072

142-25-071

142-25-070

142-25-069

142-25-068

142-25-067

142-25-066

142-25-065

142-25-064

142-25-063

142-25-062

142-25-061

142-25-060

142-25-059

142-25-058

142-25-057

142-25-056

142-25-055

142-25-054

142-25-053

142-25-052

142-25-051

142-25-050

142-25-049

142-25-048

142-25-047

142-25-046

142-25-045

142-25-044

142-25-043

142-25-042

142-25-041

142-25-040

142-25-039A

142-25-039

142-25-038A

142-25-038

142-25-037A

142-25-037

142-25-036A

142-25-036

142-25-035

142-25-034

142-25-033

142-25-032

142-25-031

142-25-030

142-25-029

142-25-028

142-25-027

142-25-026

142-25-025

142-25-024

142-25-023

142-25-022

142-25-021

142-25-020

142-25-019

142-25-018

142-25-017

142-25-016

142-25-015

142-25-014

142-25-013

142-25-012

142-25-011

142-25-010

142-25-009

142-25-008

142-25-007

142-25-006

142-25-005

142-25-004

142-25-003

142-25-002

142-25-001

142-25-000

142-25-000S

142-25-000R

142-25-000T

142-25-000U

142-25-000V

142-25-000W

142-25-000X

142-25-000Y

142-25-000Z

142-25-000A

142-25-000B

142-25-000C

142-25-000D

142-25-000E

142-25-000F

142-25-000G

142-25-000H

142-25-000I

142-25-000J

142-25-000K

142-25-000L

142-25-000M

142-25-000N

142-25-000O

142-25-000P

142-25-000Q

142-25-000R

142-25-000S

142-25-000T

142-25-000U

142-25-000V

142-25-000W

142-25-000X

142-25-000Y

142-25-000Z

142-25-000A

142-25-000B

142-25-000C

142-25-000D

142-25-000E

142-25-000F

142-25-000G

142-25-000H

142-25-000I

142-25-000J

142-25-000K

142-25-000L

142-25-000M

142-25-000N

142-25-000O

142-25-000P

142-25-000Q

142-25-000R

142-25-000S

142-25-000T

142-25-000U

142-25-000V

142-25-000W

142-25-000X

142-25-000Y

142-25-000Z

142-25-000A

142-25-000B

142-25-000C

142-25-000D

142-25-000E

142-25-000F

142-25-000G

142-25-000H

142-25-000I

142-25-000J

142-25-000K

142-25-000L

142-25-000M

142-25-000N

142-25-000O