

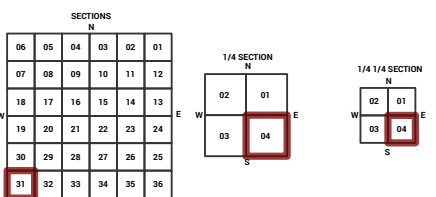
MARICOPA COUNTY

STATE OF ARIZONA

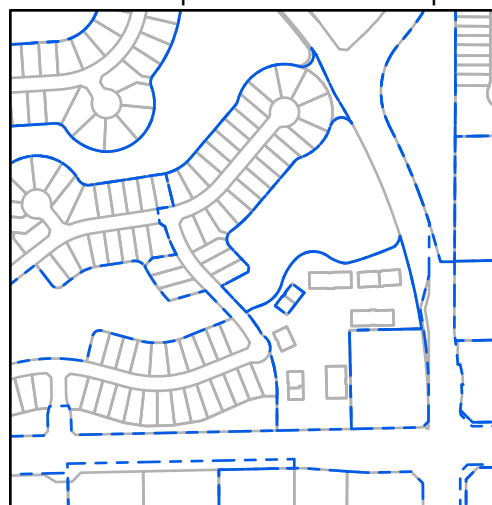
PT. SECTION 31 T02N R01E

828 - 31 - 04 - 04

TOWNSHIP & RANGE SECTION 1/4 SECTION 1/4 1/4 SECTION



Parcels updated within this map



MARICOPA COUNTY
ASSESSOR'S OFFICE
301 W. Jefferson Street
Phoenix, AZ 85003



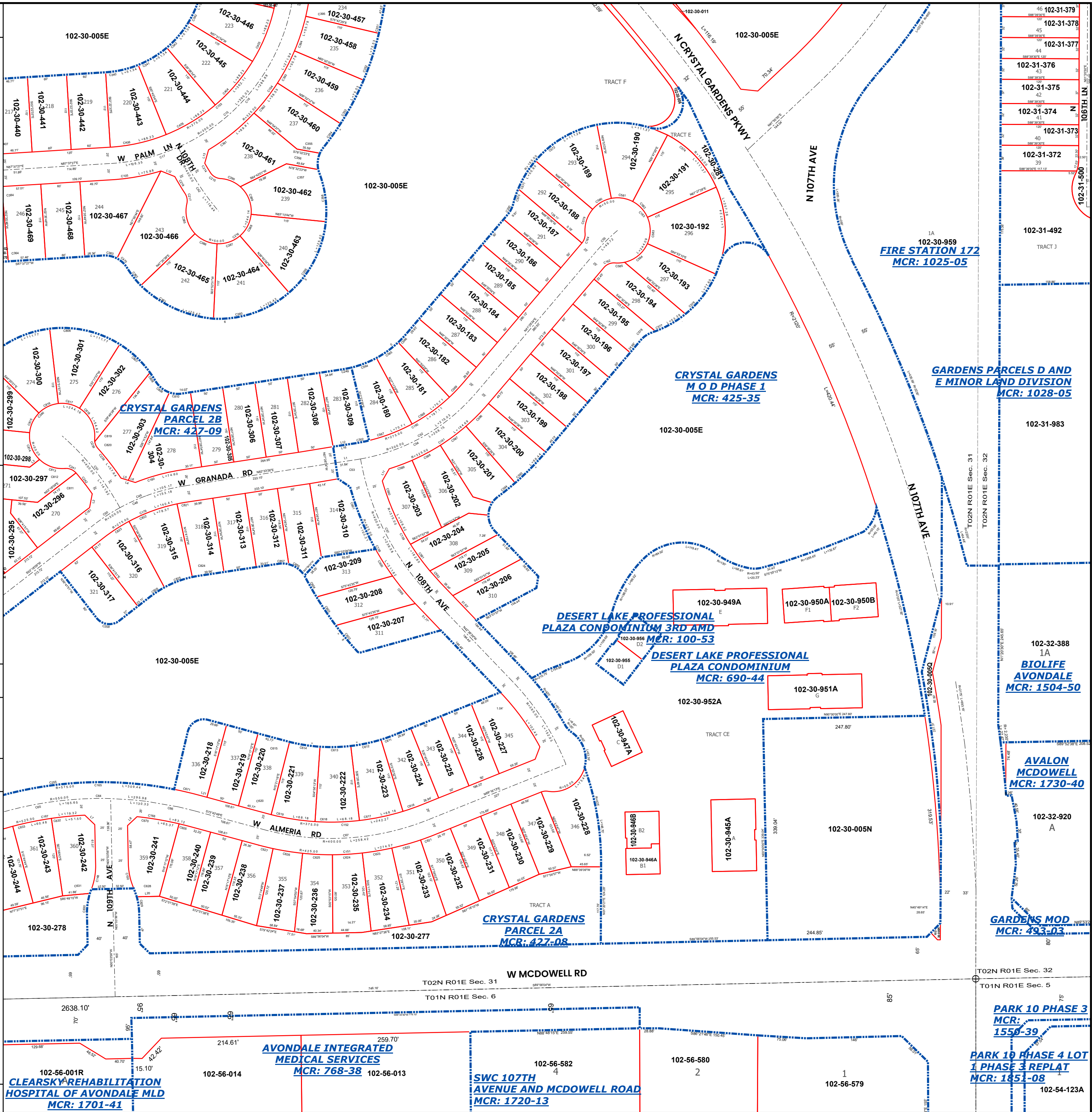
LEGEND: Tax Parcels (red outline), Sections (dotted line), Subdivisions (dashed line), Lots (solid line), Section Corners (circle with cross), Centerlines (dashed line)

Disclaimer - Indemnification
CAUTION! USERS SHOULD INDEPENDENTLY RESEARCH AND VERIFY INFORMATION WITHIN THIS DATASET OR MAP BEFORE RELYING ON IT.

The Assessor's Office has compiled information within this dataset or map that it uses to identify, classify, and value real and personal property. Please contact the Assessor's Office at 602 506-3406 if you believe any information is incomplete, out of date, or incorrect so that appropriate corrections can be addressed. Please note that a statutory process is also available to correct errors pursuant to Arizona Revised Statutes 42-16254.

The Assessor does not guarantee that any information contained within this dataset or map is accurate, complete or current. In many instances, the Assessor has gathered information from independent sources and made it available within this dataset or map, and the original information may have contained errors and omissions. Errors and omissions may have occurred in the process of gathering, interpreting, and reporting the information. Information within this dataset or map is not updated "real time." In addition, Users are cautioned that the process used within this dataset or map to illustrate the boundaries of adjacent parcels is not always consistent with the recorded documents for such parcels. The parcel boundaries depicted within this dataset or maps are for illustrative purposes only, and the exact relationship of adjacent parcels should be independently researched and verified. The information provided within this dataset or map is not the equivalent of a title report or a real estate survey. Users should independently research, investigate, and verify all information before relying on it or using it in the preparation of legal documents.

Map Reprint Date: 2/24/2026



46	102-31-379
45	102-31-378
44	102-31-377
43	102-31-376
42	102-31-375
41	102-31-374
40	102-31-373
39	102-31-372
38	102-31-371
37	102-31-370
36	102-31-369
35	102-31-368
34	102-31-367
33	102-31-366
32	102-31-365
31	102-31-364
30	102-31-363
29	102-31-362
28	102-31-361
27	102-31-360
26	102-31-359
25	102-31-358
24	102-31-357
23	102-31-356
22	102-31-355
21	102-31-354
20	102-31-353
19	102-31-352
18	102-31-351
17	102-31-350
16	102-31-349
15	102-31-348
14	102-31-347
13	102-31-346
12	102-31-345
11	102-31-344
10	102-31-343
9	102-31-342
8	102-31-341
7	102-31-340
6	102-31-339
5	102-31-338
4	102-31-337
3	102-31-336
2	102-31-335
1	102-31-334
0	102-31-333