

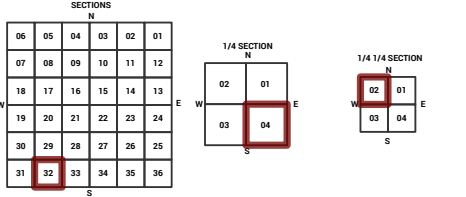
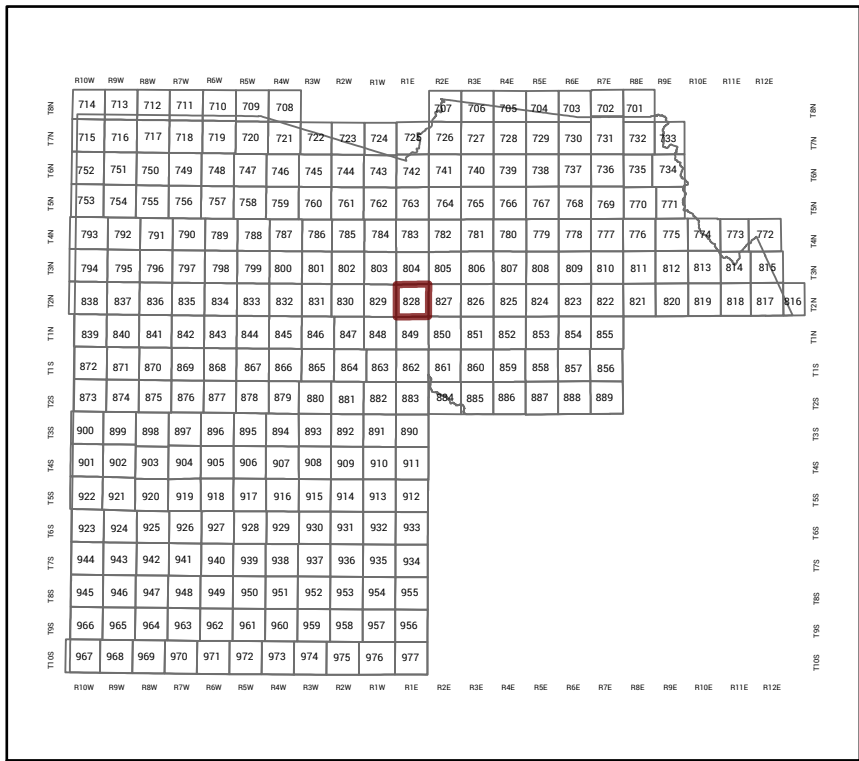
MARICOPA COUNTY

STATE OF ARIZONA

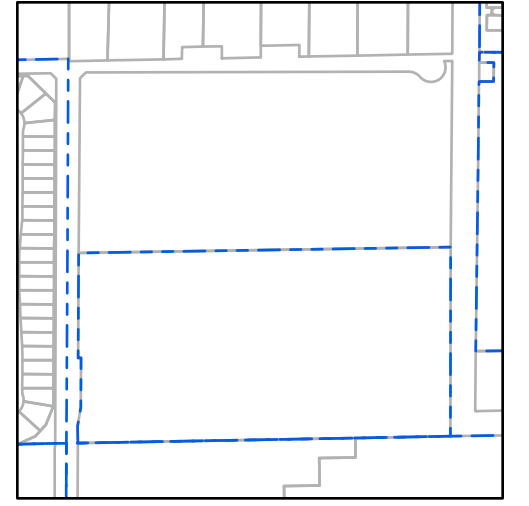
PT. SECTION 32 T02N R01E

828 - 32 - 04 - 02

TOWNSHIP & RANGE SECTION 1/4 SECTION 1/4 SECTION



Parcels updated within this map



MARICOPA COUNTY
ASSESSOR'S OFFICE
301 W. Jefferson Street
Phoenix, AZ 85003



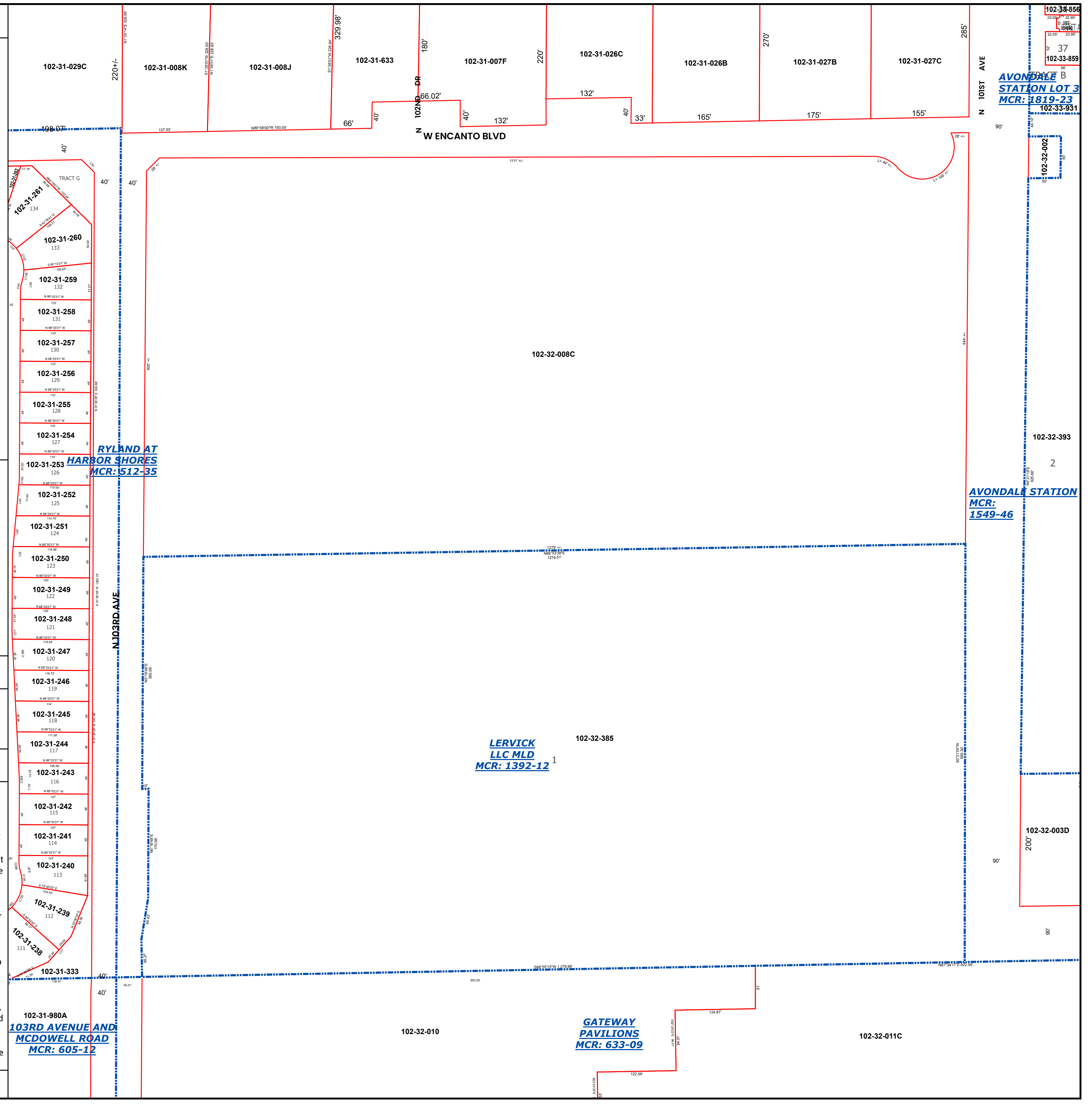
LEGEND: Tax Parcels (red outline), Sections (dashed blue outline), Subdivisions (dotted blue outline), Lots (thin red outline), Section Corners (circle with cross), Centerlines (dashed blue line)

Disclaimer - Indemnification
CAUTION! USERS SHOULD INDEPENDENTLY RESEARCH AND VERIFY INFORMATION WITHIN THIS DATASET OR MAP BEFORE RELYING ON IT.

The Assessor's Office has compiled information within this dataset or map that it uses to identify, classify, and value real and personal property. Please contact the Assessor's Office at 602 506-3406 if you believe any information is incomplete, out of date, or incorrect so that appropriate corrections can be addressed. Please note that a statutory process is also available to correct errors pursuant to Arizona Revised Statutes 42-16254.

The Assessor does not guarantee that any information contained within this dataset or map is accurate, complete or current. In many instances, the Assessor has gathered information from independent sources and made it available within this dataset or map, and the original information may have contained errors and omissions. Errors and omissions may have occurred in the process of gathering, interpreting, and reporting the information. Information within this dataset or map is not updated "real time." In addition, Users are cautioned that the process used within this dataset or map to illustrate the boundaries of adjacent parcels is not always consistent with the recorded documents for such parcels. The parcel boundaries depicted within this dataset or maps are for illustrative purposes only, and the exact relationship of adjacent parcels should be independently researched and verified. The information provided within this dataset or map is not the equivalent of a title report or a real estate survey. Users should independently research, investigate, and verify all information before relying on it or using it in the preparation of legal documents.

Map Reprint Date: 2/24/2026



102-31-856
102-31-857
102-31-858
102-31-859
102-31-860
102-31-861
102-31-862
102-31-863
102-31-864
102-31-865
102-31-866
102-31-867
102-31-868
102-31-869
102-31-870
102-31-871
102-31-872
102-31-873
102-31-874
102-31-875
102-31-876
102-31-877
102-31-878
102-31-879
102-31-880
102-31-881
102-31-882
102-31-883
102-31-884
102-31-885
102-31-886
102-31-887
102-31-888
102-31-889
102-31-890
102-31-891
102-31-892
102-31-893
102-31-894
102-31-895
102-31-896
102-31-897
102-31-898
102-31-899
102-31-900

AVONDALE STATION LOT 3
MCR: 1819-23

102-32-002

102-32-393

2

AVONDALE STATION
MCR: 1549-46

102-32-003D

200'

LERVICK LLC MLD
MCR: 1392-12

102-32-385

GATEWAY PAVILIONS
MCR: 633-09

102-32-011C

102-32-010

102-31-980A
103RD AVENUE AND MCDOWELL ROAD
MCR: 605-12

RYLAND AT HARBOR SHORES
MCR: 1512-35