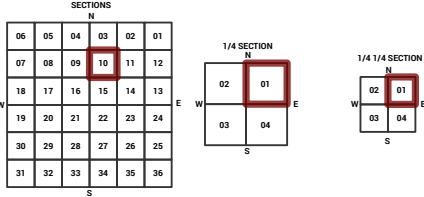
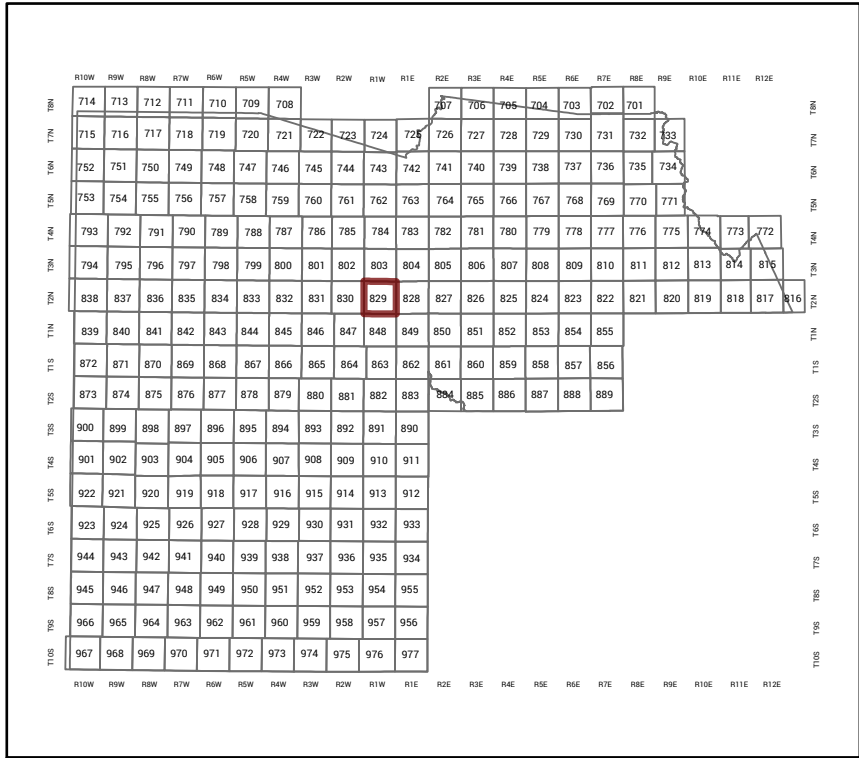


MARICOPA COUNTY
STATE OF ARIZONA

PT. SECTION 10 T02N R01W

829 - 10 - 01 - 01

TOWNSHIP & RANGE SECTION 1/4 SECTION 1/4 1/4 SECTION



Parcels updated within this map



MARICOPA COUNTY
ASSESSOR'S OFFICE
301 W. Jefferson Street
Phoenix, AZ 85003



LEGEND: Tax Parcels Sections Subdivisions
Lots Section Corners Centerlines

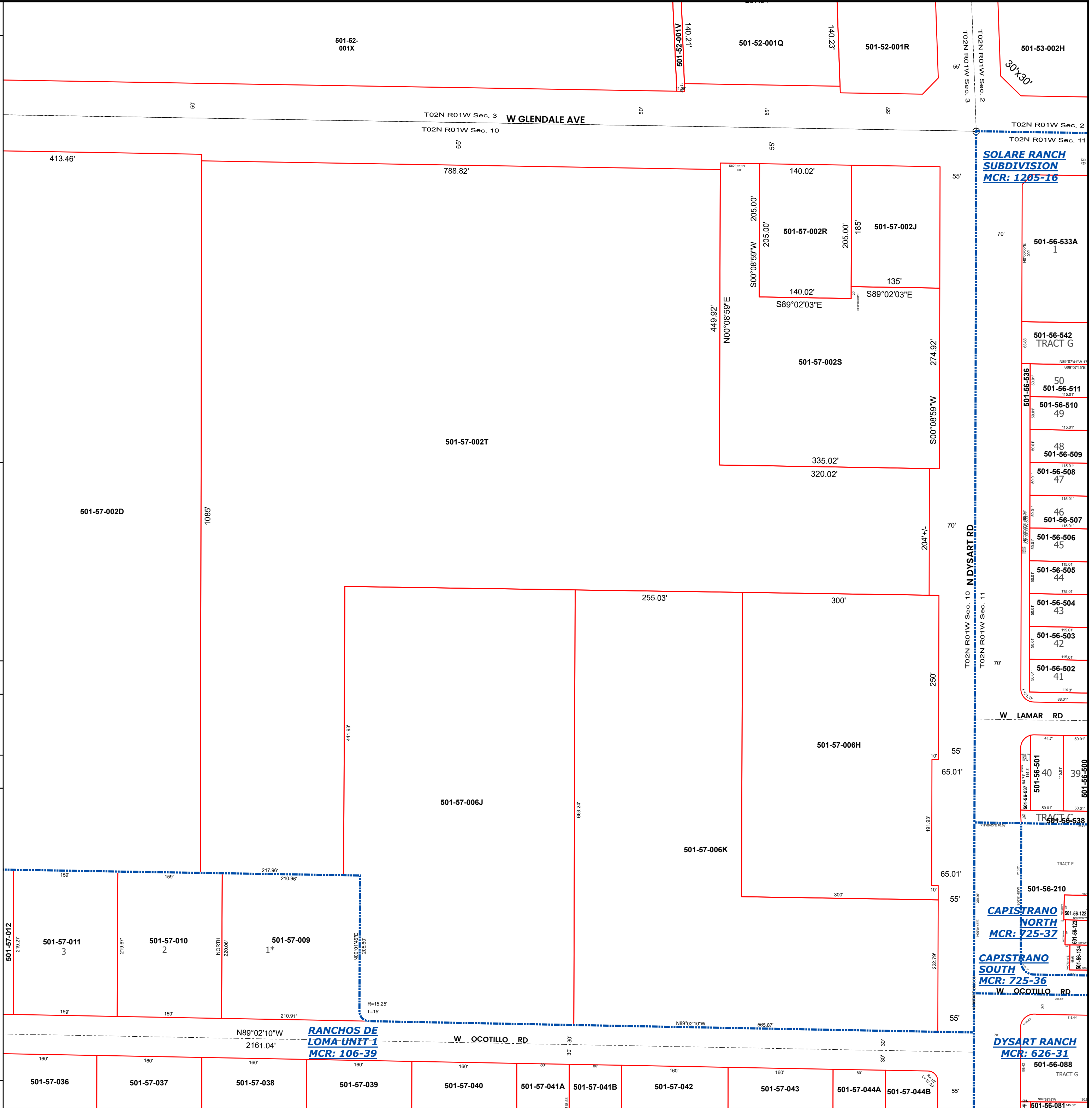
Disclaimer - Indemnification

CAUTION! USERS SHOULD INDEPENDENTLY RESEARCH AND VERIFY INFORMATION WITHIN THIS DATASET OR MAP BEFORE RELYING ON IT.

The Assessor's Office has compiled information within this dataset or map that it uses to identify, classify, and value real and personal property. Please contact the Assessor's Office at 602 506-3406 if you believe any information is incomplete, out of date, or incorrect so that appropriate corrections can be addressed. Please note that a statutory process is also available to correct errors pursuant to Arizona Revised Statutes 42-16254.

The Assessor does not guarantee that any information contained within this dataset or map is accurate, complete or current. In many instances, the Assessor has gathered information from independent sources and made it available within this dataset or map, and the original information may have contained errors and omissions. Errors and omissions may have occurred in the process of gathering, interpreting, and reporting the information. Information within this dataset or map is not updated "real time." In addition, Users are cautioned that the process used within this dataset or map to illustrate the boundaries of adjacent parcels is not always consistent with the recorded documents for such parcels. The parcel boundaries depicted within this dataset or maps are for illustrative purposes only, and the exact relationship of adjacent parcels should be independently researched and verified. The information provided within this dataset or map is not the equivalent of a title report or a real estate survey. Users should independently research, investigate, and verify all information before relying on it or using it in the preparation of legal documents.

Map Reprint Date: 2/24/2026



SOLARE RANCH SUBDIVISION
MCR: 1205-16

501-56-542 TRACT G

501-56-511

501-56-510

501-56-509

501-56-508

501-56-507

501-56-506

501-56-505

501-56-504

501-56-503

501-56-502

501-56-501

501-56-500

501-56-539

501-56-538

501-56-210

CAPISTRANO NORTH
MCR: 725-37

CAPISTRANO SOUTH
MCR: 725-36

W OCOTILLO RD

DYSART RANCH
MCR: 626-31

501-56-088

501-56-081

RANCHOS DE LOMA UNIT 1
MCR: 106-39

501-57-036

501-57-037

501-57-038

501-57-039

501-57-040

501-57-041A

501-57-041B

501-57-042

501-57-043

501-57-044A

501-57-044B

501-57-044C

501-57-044D

501-57-044E

501-57-044F

501-57-044G

501-57-044H

501-57-044I

501-57-044J

501-57-044K

501-57-044L

501-57-044M

501-57-044N

501-57-044O

501-57-044P

501-57-044Q

501-57-044R

501-57-044S

501-57-044T

501-57-044U

501-57-044V

501-57-044W

501-57-044X

501-57-044Y

501-57-044Z

501-57-044AA

501-57-044AB

501-57-044AC

501-57-044AD

501-57-044AE

501-57-044AF

501-57-044AG

501-57-044AH

501-57-044AI

501-57-044AJ

501-57-044AK

501-57-044AL

501-57-044AM

501-57-044AN

501-57-044AO

501-57-044AP

501-57-044AQ

501-57-044AR

501-57-044AS

501-57-044AT

501-57-044AU

501-57-044AV

501-57-044AW

501-57-044AX

501-57-044AY

501-57-044AZ

501-57-044BA

501-57-044BB

501-57-044BC

501-57-044BD

501-57-044BE

501-57-044BF

501-57-044BG

501-57-044BH

501-57-044BI

<