

# MARICOPA COUNTY

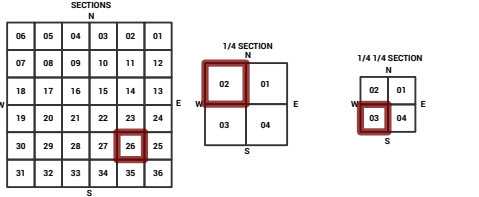
STATE OF ARIZONA

PT. SECTION 26 T02N R01W

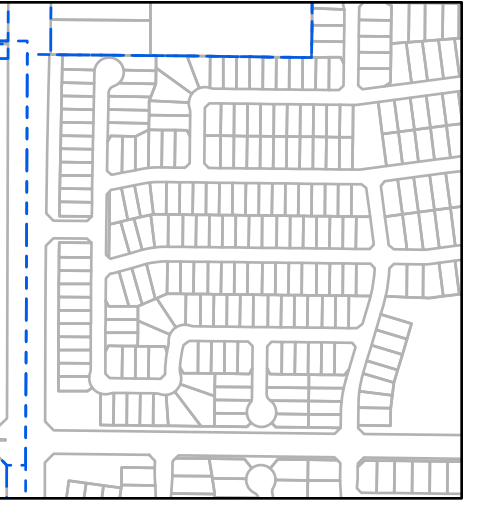
## 829 - 26 - 02 - 03

TOWNSHIP & RANGE SECTION 1/4 SECTION 1/4 1/4 SECTION

714	715	716	717	718	719	720	721	722	723	724	725	726	727	728	729	730	731	732	733
734	735	736	737	738	739	740	741	742	743	744	745	746	747	748	749	750	751	752	753
754	755	756	757	758	759	760	761	762	763	764	765	766	767	768	769	770	771	772	773
774	775	776	777	778	779	780	781	782	783	784	785	786	787	788	789	790	791	792	793
794	795	796	797	798	799	800	801	802	803	804	805	806	807	808	809	810	811	812	813
814	815	816	817	818	819	820	821	822	823	824	825	826	827	828	829	830	831	832	833
834	835	836	837	838	839	840	841	842	843	844	845	846	847	848	849	850	851	852	853
854	855	856	857	858	859	860	861	862	863	864	865	866	867	868	869	870	871	872	873
874	875	876	877	878	879	880	881	882	883	884	885	886	887	888	889	890	891	892	893
894	895	896	897	898	899	900	901	902	903	904	905	906	907	908	909	910	911	912	913
914	915	916	917	918	919	920	921	922	923	924	925	926	927	928	929	930	931	932	933
934	935	936	937	938	939	940	941	942	943	944	945	946	947	948	949	950	951	952	953
954	955	956	957	958	959	960	961	962	963	964	965	966	967	968	969	970	971	972	973
974	975	976	977	978	979	980	981	982	983	984	985	986	987	988	989	990	991	992	993
994	995	996	997	998	999	1000													



Parcels updated within this map



MARICOPA COUNTY ASSESSOR'S OFFICE  
301 W. Jefferson Street  
Phoenix, AZ 85003



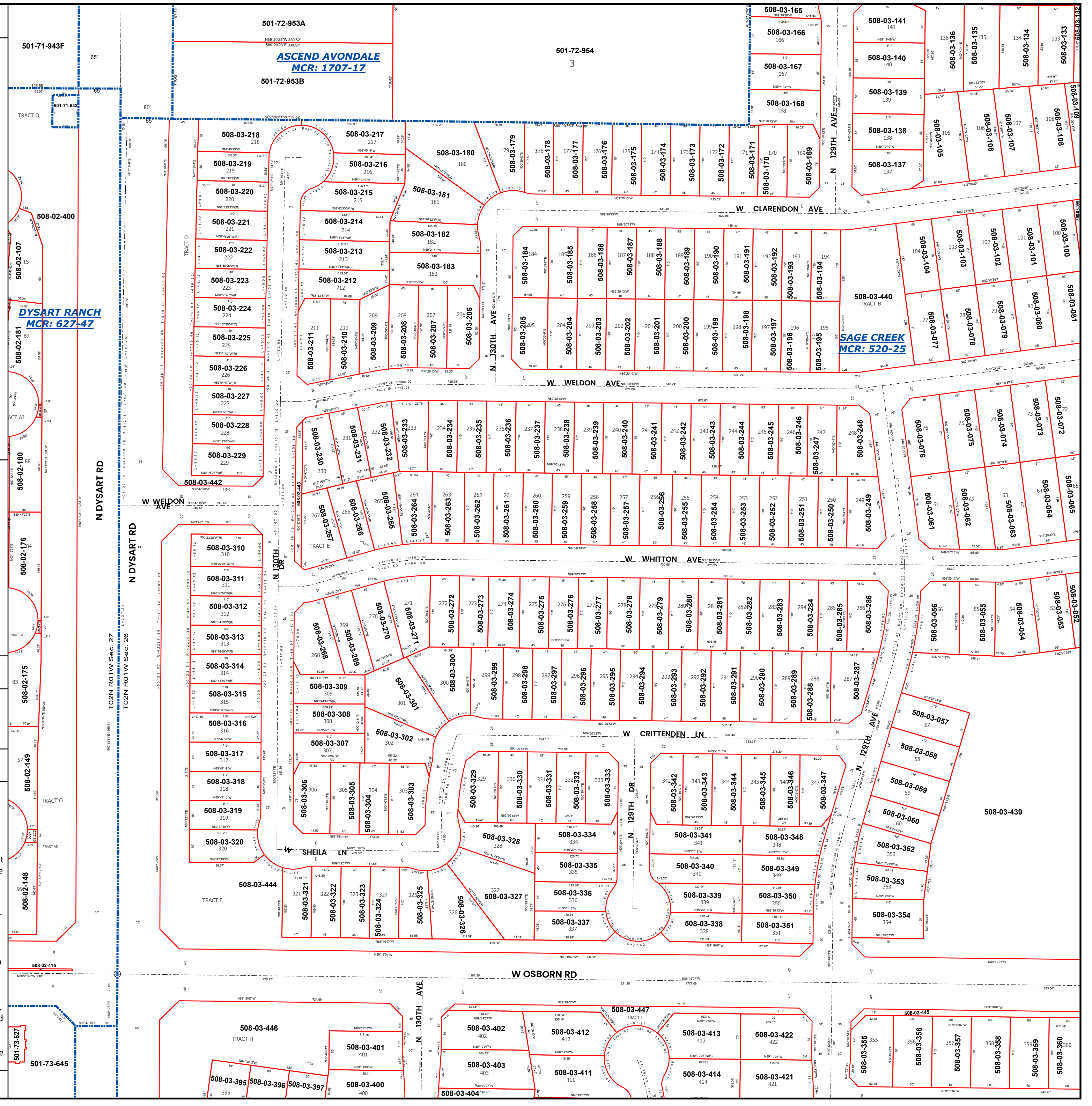
**LEGEND:** Tax Parcels, Sections, Subdivisions, Lots, Section Corners, Centerlines

Disclaimer - Indemnification  
CAUTION! USERS SHOULD INDEPENDENTLY RESEARCH AND VERIFY INFORMATION WITHIN THIS DATASET OR MAP BEFORE RELYING ON IT.

The Assessor's Office has compiled information within this dataset or map that it uses to identify, classify, and value real and personal property. Please contact the Assessor's Office at 602 506-3406 if you believe any information is incomplete, out of date, or incorrect so that appropriate corrections can be addressed. Please note that a statutory process is also available to correct errors pursuant to Arizona Revised Statutes 42-16254.

The Assessor does not guarantee that any information contained within this dataset or map is accurate, complete or current. In many instances, the Assessor has gathered information from independent sources and made it available within this dataset or map, and the original information may have contained errors and omissions. Errors and omissions may have occurred in the process of gathering, interpreting, and reporting the information. Information within this dataset or map is not updated "real time." In addition, Users are cautioned that the process used within this dataset or map to illustrate the boundaries of adjacent parcels is not always consistent with the recorded documents for such parcels. The parcel boundaries depicted within this dataset or maps are for illustrative purposes only, and the exact relationship of adjacent parcels should be independently researched and verified. The information provided within this dataset or map is not the equivalent of a title report or a real estate survey. Users should independently research, investigate, and verify all information before relying on it or using it in the preparation of legal documents.

Map Reprint Date: 2/25/2026



501-72-953A  
ASCEND AVONDALE  
MCR: 1707-17  
501-72-953B

501-72-954  
3

508-03-165  
508-03-166  
508-03-167  
508-03-168

508-03-141  
508-03-140  
508-03-139  
508-03-138  
508-03-137

508-02-107  
DYSART RANCH  
MCR: 627-47

508-03-440  
SAGE CREEK  
MCR: 520-25

508-02-180  
508-02-176  
508-02-175  
508-02-149  
508-02-148  
508-02-415  
501-73-627  
501-73-645

N DYSART RD  
N DYSART RD  
T02N R01W Sec. 27  
T02N R01W Sec. 26

508-03-310  
508-03-311  
508-03-312  
508-03-313  
508-03-314  
508-03-315  
508-03-316  
508-03-317  
508-03-318  
508-03-319  
508-03-320

508-03-446  
508-03-401  
508-03-395  
508-03-396  
508-03-397  
508-03-400

508-03-300  
508-03-299  
508-03-298  
508-03-297  
508-03-296  
508-03-295  
508-03-294  
508-03-293  
508-03-292  
508-03-291  
508-03-290  
508-03-289  
508-03-288  
508-03-287

508-03-402  
508-03-403  
508-03-404  
508-03-412  
508-03-411  
508-03-414  
508-03-421

508-03-272  
508-03-273  
508-03-274  
508-03-275  
508-03-276  
508-03-277  
508-03-278  
508-03-279  
508-03-280  
508-03-281  
508-03-282  
508-03-283  
508-03-284  
508-03-285  
508-03-286

508-03-405  
508-03-406  
508-03-357  
508-03-358  
508-03-359  
508-03-360

508-03-240  
508-03-241  
508-03-242  
508-03-243  
508-03-244  
508-03-245  
508-03-246  
508-03-247  
508-03-248  
508-03-249  
508-03-250  
508-03-251  
508-03-252  
508-03-253  
508-03-254  
508-03-255  
508-03-256

508-03-407  
508-03-408  
508-03-409  
508-03-410  
508-03-413  
508-03-414  
508-03-422

508-03-200  
508-03-201  
508-03-202  
508-03-203  
508-03-204  
508-03-205  
508-03-206  
508-03-207  
508-03-208  
508-03-209  
508-03-210  
508-03-211

508-03-415  
508-03-416  
508-03-417  
508-03-418  
508-03-419  
508-03-420  
508-03-421

508-03-180  
508-03-181  
508-03-182  
508-03-183  
508-03-184  
508-03-185  
508-03-186  
508-03-187  
508-03-188  
508-03-189  
508-03-190  
508-03-191  
508-03-192  
508-03-193  
508-03-194

508-03-423  
508-03-424  
508-03-425  
508-03-426  
508-03-427  
508-03-428  
508-03-429

508-03-100  
508-03-101  
508-03-102  
508-03-103  
508-03-104  
508-03-105  
508-03-106  
508-03-107  
508-03-108  
508-03-109

508-03-430  
508-03-431  
508-03-432  
508-03-433  
508-03-434  
508-03-435  
508-03-436