

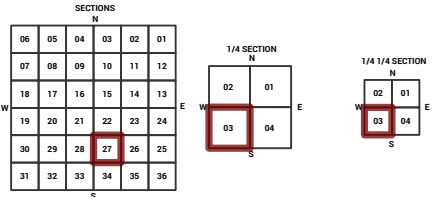
MARICOPA COUNTY
STATE OF ARIZONA

PT. SECTION 27 T02N R01W

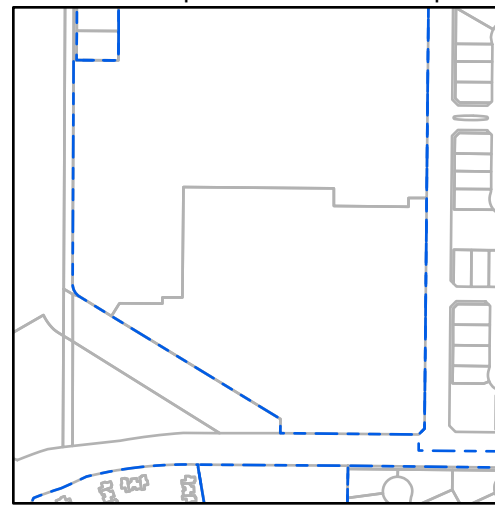
829 - 27 - 03 - 03

TOWNSHIP & RANGE SECTION 1/4 SECTION 1/4 SECTION

Grid of section numbers from 708 to 916, with a highlighted section 829.



Parcels updated within this map



MARICOPA COUNTY
ASSESSOR'S OFFICE
301 W. Jefferson Street
Phoenix, AZ 85003



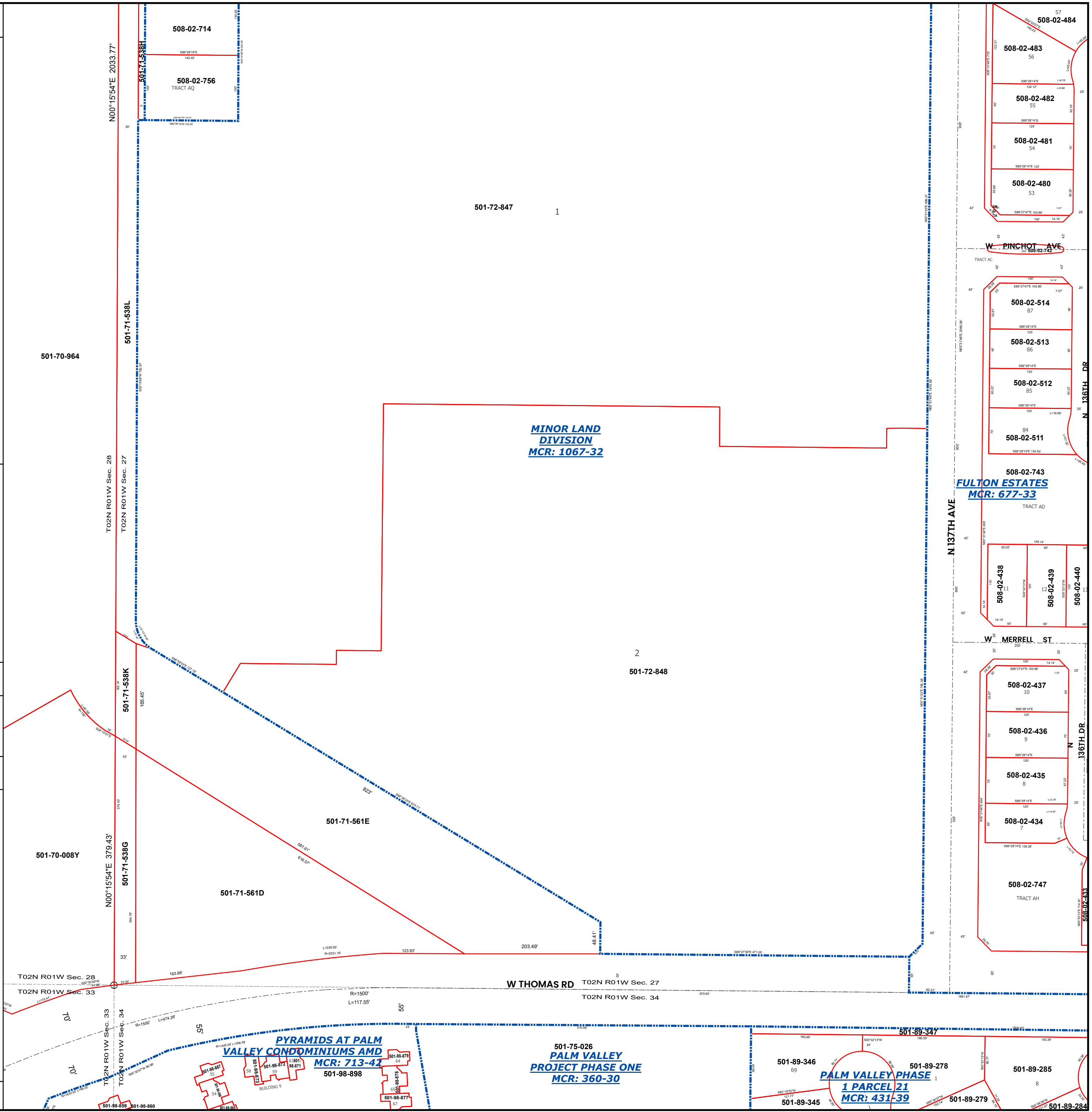
LEGEND: Tax Parcels, Sections, Subdivisions, Lots, Section Corners, Centerlines

Disclaimer - Indemnification
CAUTION! USERS SHOULD INDEPENDENTLY RESEARCH AND VERIFY INFORMATION WITHIN THIS DATASET OR MAP BEFORE RELYING ON IT.

The Assessor's Office has compiled information within this dataset or map that it uses to identify, classify, and value real and personal property. Please contact the Assessor's Office at 602 506-3406 if you believe any information is incomplete, out of date, or incorrect so that appropriate corrections can be addressed. Please note that a statutory process is also available to correct errors pursuant to Arizona Revised Statutes 42-16254.

The Assessor does not guarantee that any information contained within this dataset or map is accurate, complete or current. In many instances, the Assessor has gathered information from independent sources and made it available within this dataset or map, and the original information may have contained errors and omissions. Errors and omissions may have occurred in the process of gathering, interpreting, and reporting the information. Information within this dataset or map is not updated "real time." In addition, Users are cautioned that the process used within this dataset or map to illustrate the boundaries of adjacent parcels is not always consistent with the recorded documents for such parcels. The parcel boundaries depicted within this dataset or maps are for illustrative purposes only, and the exact relationship of adjacent parcels should be independently researched and verified. The information provided within this dataset or map is not the equivalent of a title report or a real estate survey. Users should independently research, investigate, and verify all information before relying on it or using it in the preparation of legal documents.

Map Reprint Date: 2/25/2026



MINOR LAND DIVISION
MCR: 1067-32

FULTON ESTATES
MCR: 677-33

PALM VALLEY PHASE
1 PARCEL 21
MCR: 431-39

501-75-026
PALM VALLEY
PROJECT PHASE ONE
MCR: 360-30

PYRAMIDS AT PALM VALLEY CONDOMINIUMS AMD
MCR: 713-42

501-98-898

501-98-878

501-98-877

501-98-859

501-98-860

501-98-876

501-98-875

501-98-874

501-98-873

501-98-872

501-98-871

501-98-870

501-98-869

501-98-868

501-98-867

501-98-866

501-98-865

501-98-864

501-98-863

501-98-862

501-98-861

501-98-860

501-98-859

501-98-858

501-98-857

501-98-856

501-98-855

501-98-854

501-98-853

501-98-852

501-98-851

501-98-850

501-98-849

501-98-848

501-98-847

501-98-846

501-98-845

501-98-844

501-98-843

501-98-842

501-98-841

501-98-840

501-98-839

501-98-838

501-98-837

501-98-836

501-98-835

501-98-834

501-98-833

501-98-832

501-98-831

501-98-830

501-98-829

501-98-828

501-98-827

501-98-826

501-98-825

501-98-824

501-98-823

501-98-822

501-98-821

501-98-820

501-98-819

501-98-818

501-98-817

501-98-816

501-98-815

501-98-814

501-98-813

501-98-812

501-98-811

501-98-810

501-98-809

501-98-808

501-98-807

501-98-806

501-98-805

501-98-804

501-98-803

501-98-802

501-98-801

501-98-800

501-98-799

501-98-798

501-98-797

501-98-796

501-98-795

501-98-794

501-98-793

501-98-792

501-98-791

501-98-790

501-98-789

501-98-788

501-98-787

501-98-786

501-98-785

501-98-784

501-98-783

501-98-782

501-98-781

501-98-780

501-98-779

501-98-778

501-98-777

501-98-776

501-98-775

501-98-774

501-98-773

501-98-772

501-98-771

501-98-770

501-98-769

501-98-768

501-98-767

501-98-766

501-98-765

501-98-764

501-98-763

501-98-762

501-98-761

501-98-760

501-98-759

501-98-758

501-98-757

501-98-756

501-98-755

501-98-754

501-98-753

501-98-752

501-98-751

501-98-750

501-98-749

501-98-748

501-98-747

501-98-746

501-98-745

501-98-744

501-98-743

501-98-742

501-98-741

501-98-740

501-98-739

501-98-738

501-98-737

501-98-736

501-98-735

501-98-734

501-98-733

501-98-732

501-98-731

501-98-730

501-98-729

501-98-728

501-98-727

501-98-726

501-98-725

501-98-724

501-98-723

501-98-722

501-98-721

501-98-720

501-98-719

501-98-718

501-98-717

501-98-716

501-98-715

501-98-714

501-98-713

501-98-712

501-98-711

501-98-710

501-98-709

501-98-708

501-98-707

501-98-706

501-98-705

501-98-704

501-98-703

501-98-702

501-98-701

501-98-700

501-98-699

501-98-698

501-98-697

501-98-696

501-98-695

501-98-694

501-98-693

501-98-692

501-98-691

501-98-690

501-98-689

501-98-688

501-98-687

501-98-686

501-98-685

501-98-684