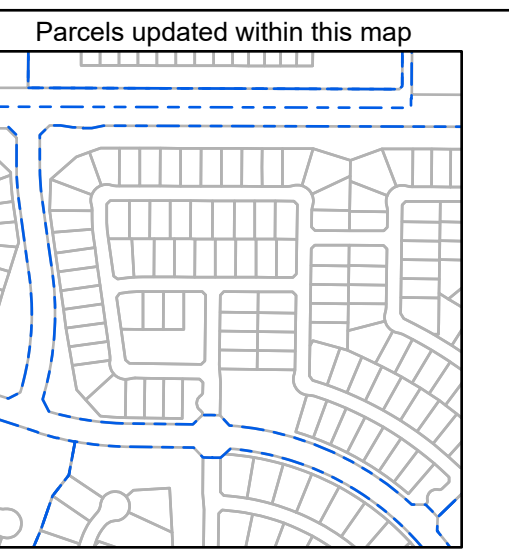
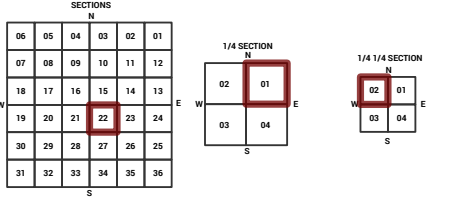
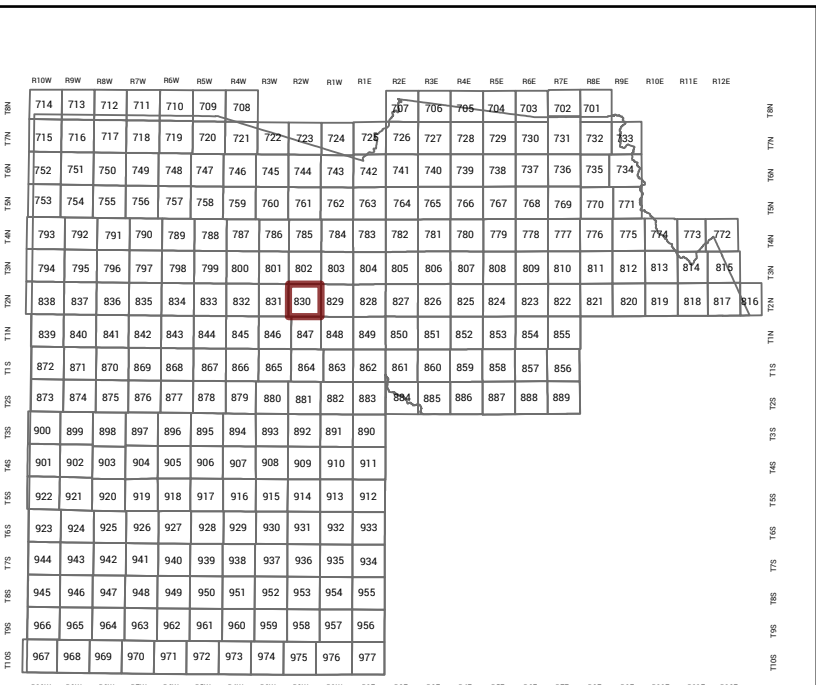


MARICOPA COUNTY
STATE OF ARIZONA

PT. SECTION 22 T02N R02W

830 - 22 - 01 - 02

TOWNSHIP & RANGE SECTION 1/4 SECTION 1/4 1/4 SECTION



MARICOPA COUNTY
ASSESSOR'S OFFICE
301 W. Jefferson Street
Phoenix, AZ 85003
<https://mcaassessor.maricopa.gov>

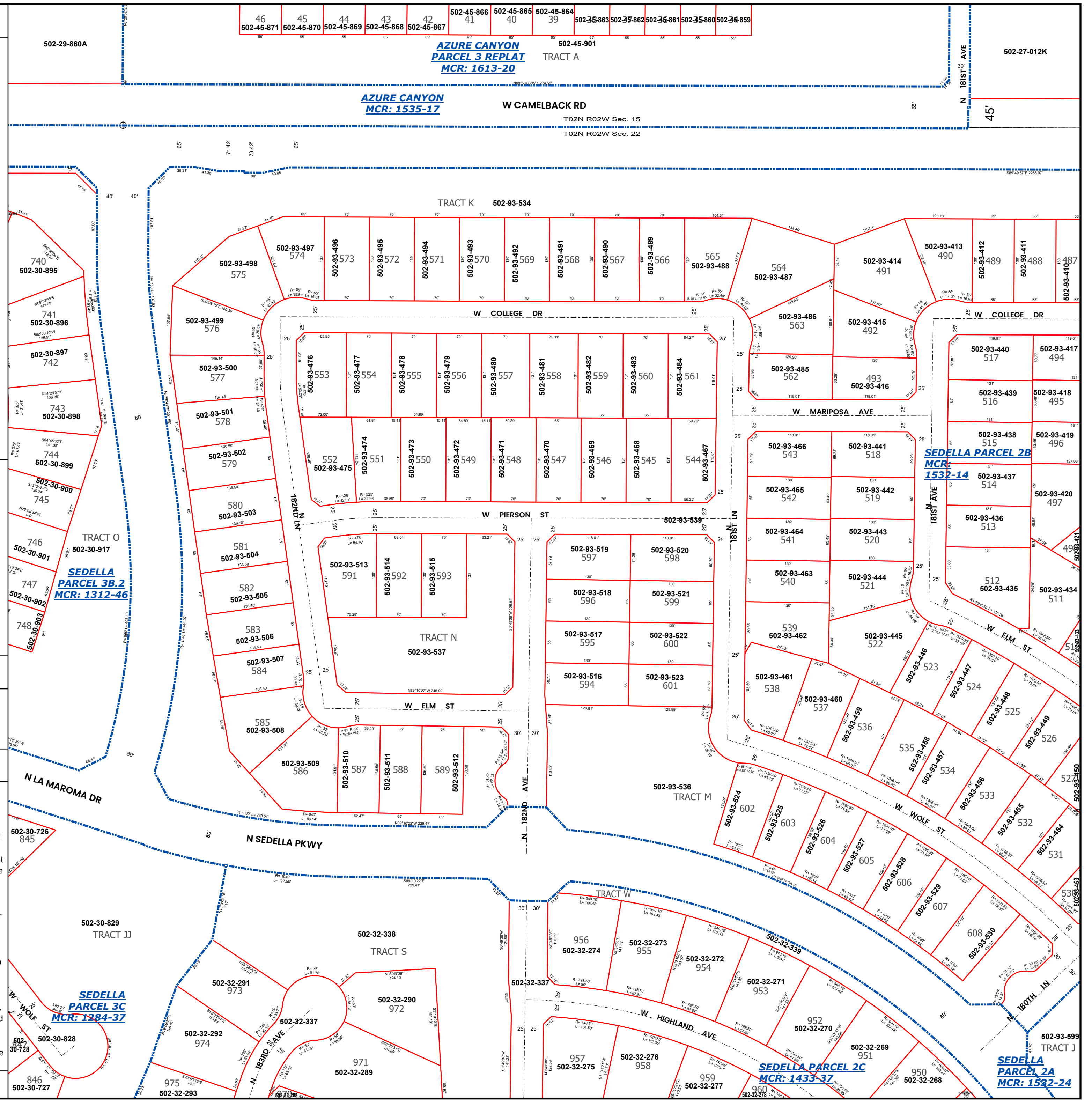
LEGEND: Tax Parcels Sections Subdivisions
Lots Section Corners Centerlines

Disclaimer - Indemnification
CAUTION! USERS SHOULD INDEPENDENTLY RESEARCH AND VERIFY
INFORMATION WITHIN THIS DATASET OR MAP BEFORE RELYING ON IT.

The Assessor's Office has compiled information within this dataset or map that it uses to identify, classify, and value real and personal property. Please contact the Assessor's Office at 602 506-3406 if you believe any information is incomplete, out of date, or incorrect so that appropriate corrections can be addressed. Please note that a statutory process is also available to correct errors pursuant to Arizona Revised Statutes 42-16254.

The Assessor does not guarantee that any information contained within this dataset or map is accurate, complete or current. In many instances, the Assessor has gathered information from independent sources and made it available within this dataset or map, and the original information may have contained errors and omissions. Errors and omissions may have occurred in the process of gathering, interpreting, and reporting the information. Information within this dataset or map is not updated "real time." In addition, Users are cautioned that the process used within this dataset or map to illustrate the boundaries of adjacent parcels is not always consistent with the recorded documents for such parcels. The parcel boundaries depicted within this dataset or maps are for illustrative purposes only, and the exact relationship of adjacent parcels should be independently researched and verified. The information provided within this dataset or map is not the equivalent of a title report or a real estate survey. Users should independently research, investigate, and verify all information before relying on it or using it in the preparation of legal documents.

Map Reprint Date: 2/25/2026



46	45	44	43	42	502-45-866	502-45-865	502-45-864	502-36-863	502-35-862	502-36-861	502-35-860	502-36-859
502-45-871	502-45-870	502-45-869	502-45-868	502-45-867	41	40	39					

**AZURE CANYON
PARCEL 3 REPLAT
MCR: 1613-20**

**AZURE CANYON
MCR: 1535-17**

**SEDELLA PARCEL 2B
MCR: 1532-14**

**SEDELLA
PARCEL 3B.2
MCR: 1312-46**

**SEDELLA
PARCEL 3C
MCR: 1284-37**

**SEDELLA PARCEL 2C
MCR: 1433-37**

**SEDELLA
PARCEL 2A
MCR: 1532-24**