

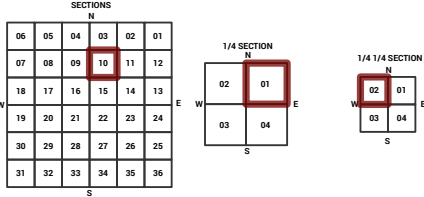
MARICOPA COUNTY
STATE OF ARIZONA

PT. SECTION 10 T01N R03W

846 - 10 - 01 - 02

TOWNSHIP & RANGE SECTION 1/4 SECTION 1/4 1/4 SECTION

Grid of section numbers from 714 to 977. Section 846 is highlighted in red.



Parcels updated within this map



MARICOPA COUNTY ASSESSOR'S OFFICE
301 W. Jefferson Street
Phoenix, AZ 85003
<https://mcaassessor.maricopa.gov>

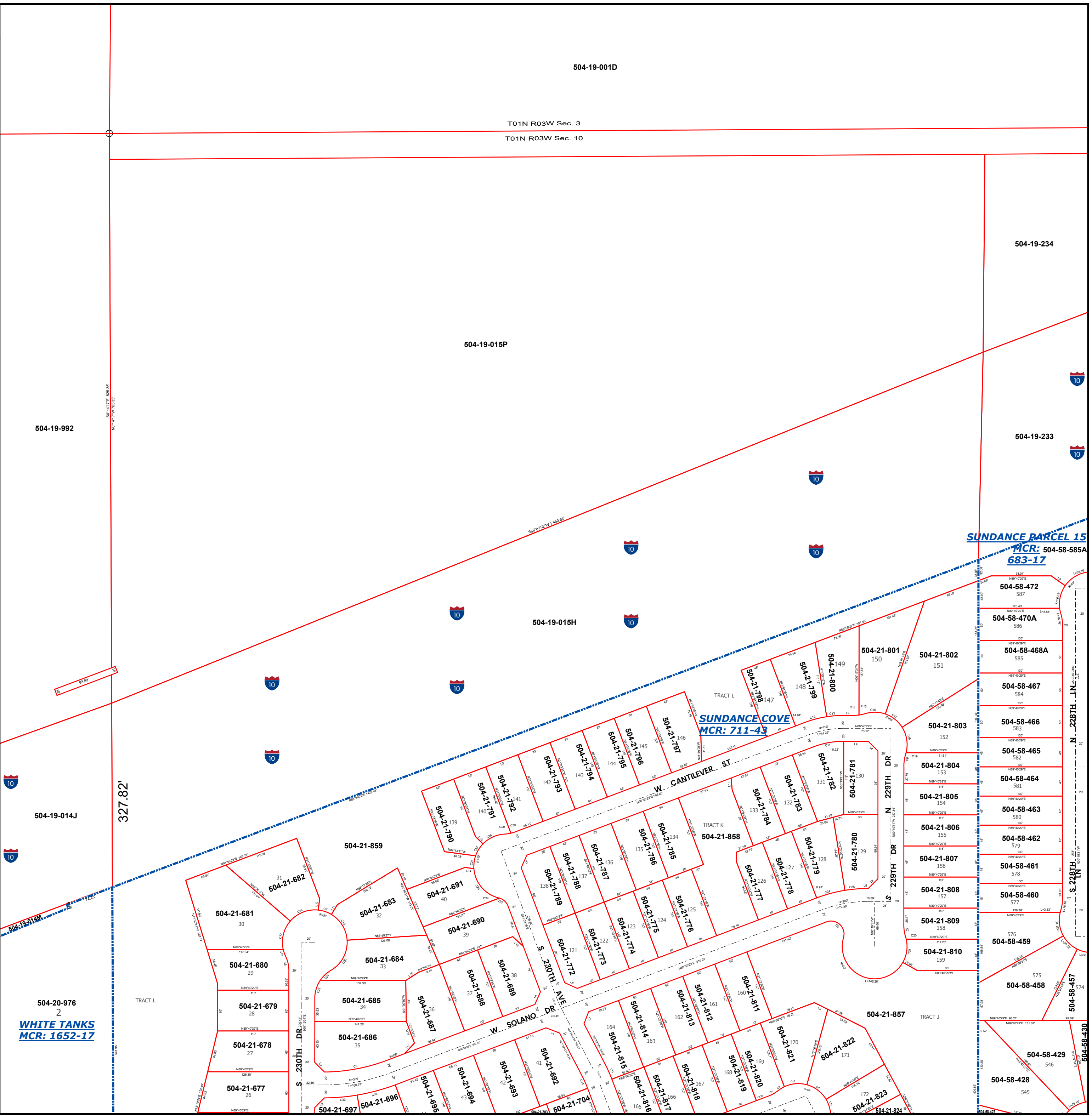
- LEGEND: Tax Parcels, Sections, Subdivisions, Lots, Section Corners, Centerlines

Disclaimer - Indemnification
CAUTION! USERS SHOULD INDEPENDENTLY RESEARCH AND VERIFY INFORMATION WITHIN THIS DATASET OR MAP BEFORE RELYING ON IT.

The Assessor's Office has compiled information within this dataset or map that it uses to identify, classify, and value real and personal property. Please contact the Assessor's Office at 602 506-3406 if you believe any information is incomplete, out of date, or incorrect so that appropriate corrections can be addressed. Please note that a statutory process is also available to correct errors pursuant to Arizona Revised Statutes 42-16254.

The Assessor does not guarantee that any information contained within this dataset or map is accurate, complete or current. In many instances, the Assessor has gathered information from independent sources and made it available within this dataset or map, and the original information may have contained errors and omissions. Errors and omissions may have occurred in the process of gathering, interpreting, and reporting the information. Information within this dataset or map is not updated "real time." In addition, Users are cautioned that the process used within this dataset or map to illustrate the boundaries of adjacent parcels is not always consistent with the recorded documents for such parcels. The parcel boundaries depicted within this dataset or maps are for illustrative purposes only, and the exact relationship of adjacent parcels should be independently researched and verified. The information provided within this dataset or map is not the equivalent of a title report or a real estate survey. Users should independently research, investigate, and verify all information before relying on it or using it in the preparation of legal documents.

Map Reprint Date: 2/25/2026



504-19-001D

T01N R03W Sec. 3

T01N R03W Sec. 10

504-19-015P

504-19-992

504-19-234

504-19-233

504-19-015H

SUNDANCE PARCEL 15
MCR: 504-58-585A
683-17

SUNDANCE COVE
MCR: 711-43

504-19-014J

327.82'

504-20-976
2
WHITE TANKS
MCR: 1652-17

504-58-472

504-58-470A

504-58-468A

504-58-467

504-58-466

504-58-465

504-58-464

504-58-463

504-58-462

504-58-461

504-58-460

504-21-809

504-21-810

504-58-459

504-58-458

504-58-457

504-58-429

504-58-428