

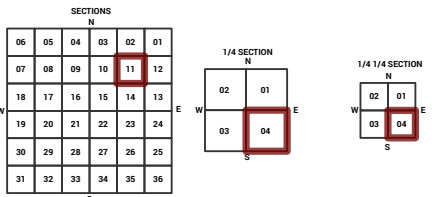
MARICOPA COUNTY  
STATE OF ARIZONA

PT. SECTION 11 T01N R03W

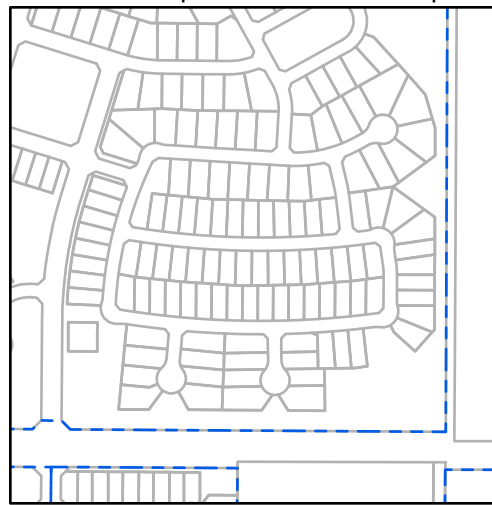
846 - 11 - 04 - 04

TOWNSHIP & RANGE SECTION 1/4 SECTION 1/4 1/4 SECTION

Grid of section numbers from 714 to 927. Section 04 is highlighted in red.



Parcels updated within this map



MARICOPA COUNTY  
ASSESSOR'S OFFICE  
301 W. Jefferson Street  
Phoenix, AZ 85003



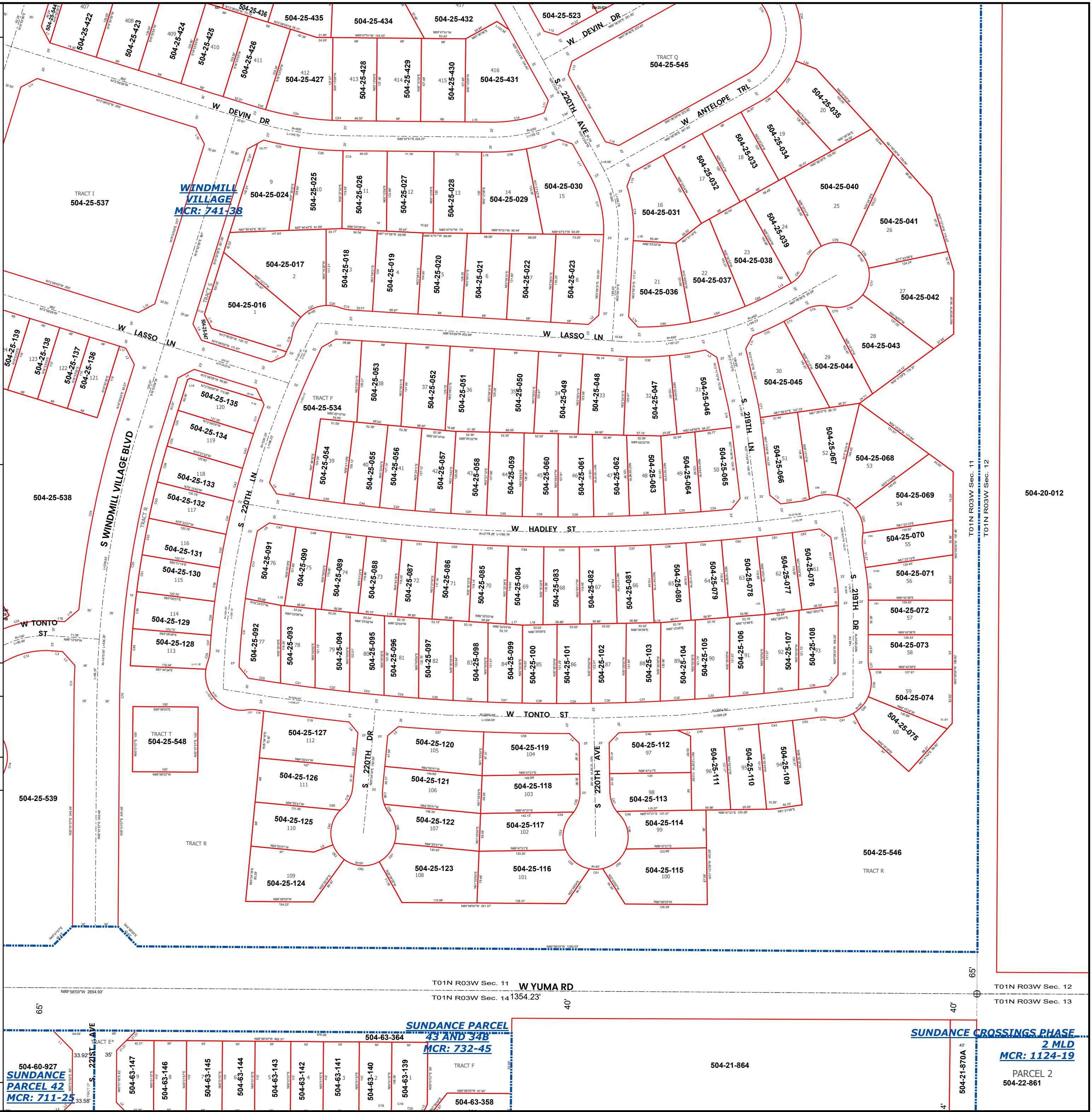
- Legend: Tax Parcels (red outline), Sections (dashed line), Subdivisions (blue outline), Lots (dotted line), Section Corners (circle with cross), Centerlines (dashed line)

Disclaimer - Indemnification  
CAUTION! USERS SHOULD INDEPENDENTLY RESEARCH AND VERIFY INFORMATION WITHIN THIS DATASET OR MAP BEFORE RELYING ON IT.

The Assessor's Office has compiled information within this dataset or map that it uses to identify, classify, and value real and personal property. Please contact the Assessor's Office at 602 506-3406 if you believe any information is incomplete, out of date, or incorrect so that appropriate corrections can be addressed. Please note that a statutory process is also available to correct errors pursuant to Arizona Revised Statutes 42-16254.

The Assessor does not guarantee that any information contained within this dataset or map is accurate, complete or current. In many instances, the Assessor has gathered information from independent sources and made it available within this dataset or map, and the original information may have contained errors and omissions. Errors and omissions may have occurred in the process of gathering, interpreting, and reporting the information. Information within this dataset or map is not updated "real time." In addition, Users are cautioned that the process used within this dataset or map to illustrate the boundaries of adjacent parcels is not always consistent with the recorded documents for such parcels. The parcel boundaries depicted within this dataset or maps are for illustrative purposes only, and the exact relationship of adjacent parcels should be independently researched and verified. The information provided within this dataset or map is not the equivalent of a title report or a real estate survey. Users should independently research, investigate, and verify all information before relying on it or using it in the preparation of legal documents.

Map Reprint Date: 2/25/2026



504-20-012

T01N R03W Sec. 11  
T01N R03W Sec. 12

65'

40'

40'

40'

40'

40'

40'

40'

T01N R03W Sec. 12  
T01N R03W Sec. 13

T01N R03W Sec. 11  
T01N R03W Sec. 14 1354.23'

SUNDANCE PARCEL  
43 AND 348  
MCR: 732-45

SUNDANCE CROSSINGS PHASE  
2 MLD  
MCR: 1124-19

PARCEL 2  
504-22-861

504-60-927  
SUNDANCE  
PARCEL 42  
MCR: 711-25

504-63-147

504-63-146

504-63-145

504-63-144

504-63-143

504-63-142

504-63-141

504-63-140

504-63-139

504-63-358

504-21-864

504-21-870A