

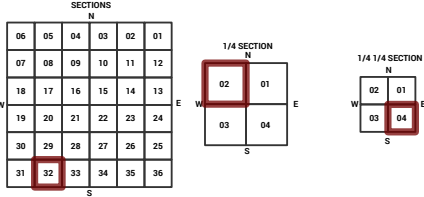
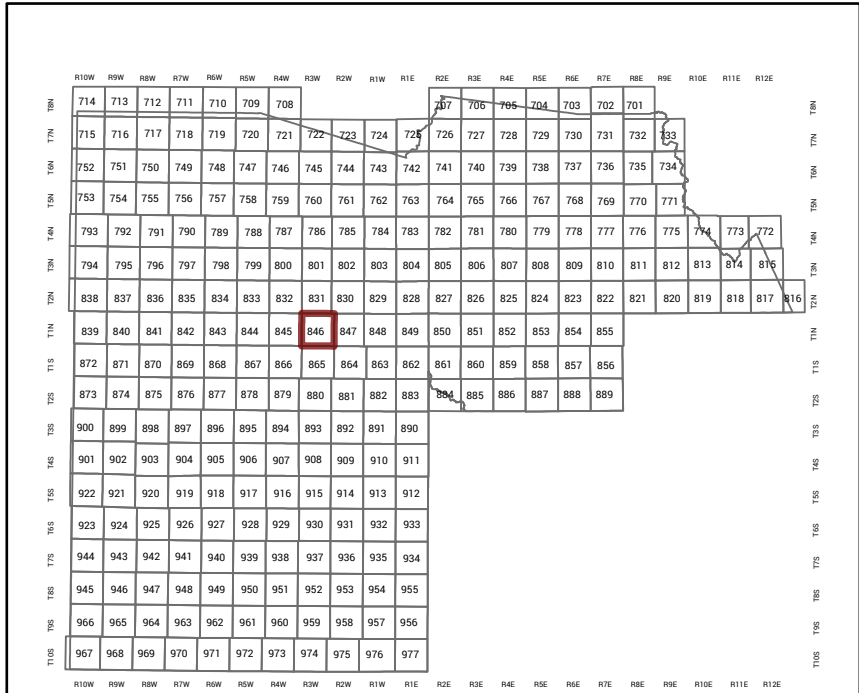
MARICOPA COUNTY

STATE OF ARIZONA

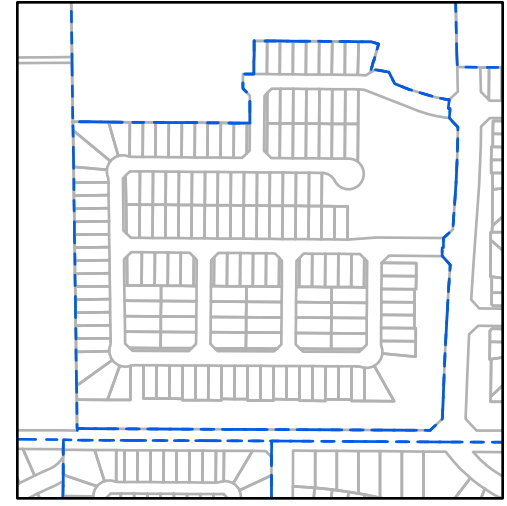
PT. SECTION 32 T01N R03W

846 - 32 - 02 - 04

TOWNSHIP & RANGE SECTION 1/4 SECTION 1/4 1/4 SECTION



Parcels updated within this map



MARICOPA COUNTY
ASSESSOR'S OFFICE
301 W. Jefferson Street
Phoenix, AZ 85003



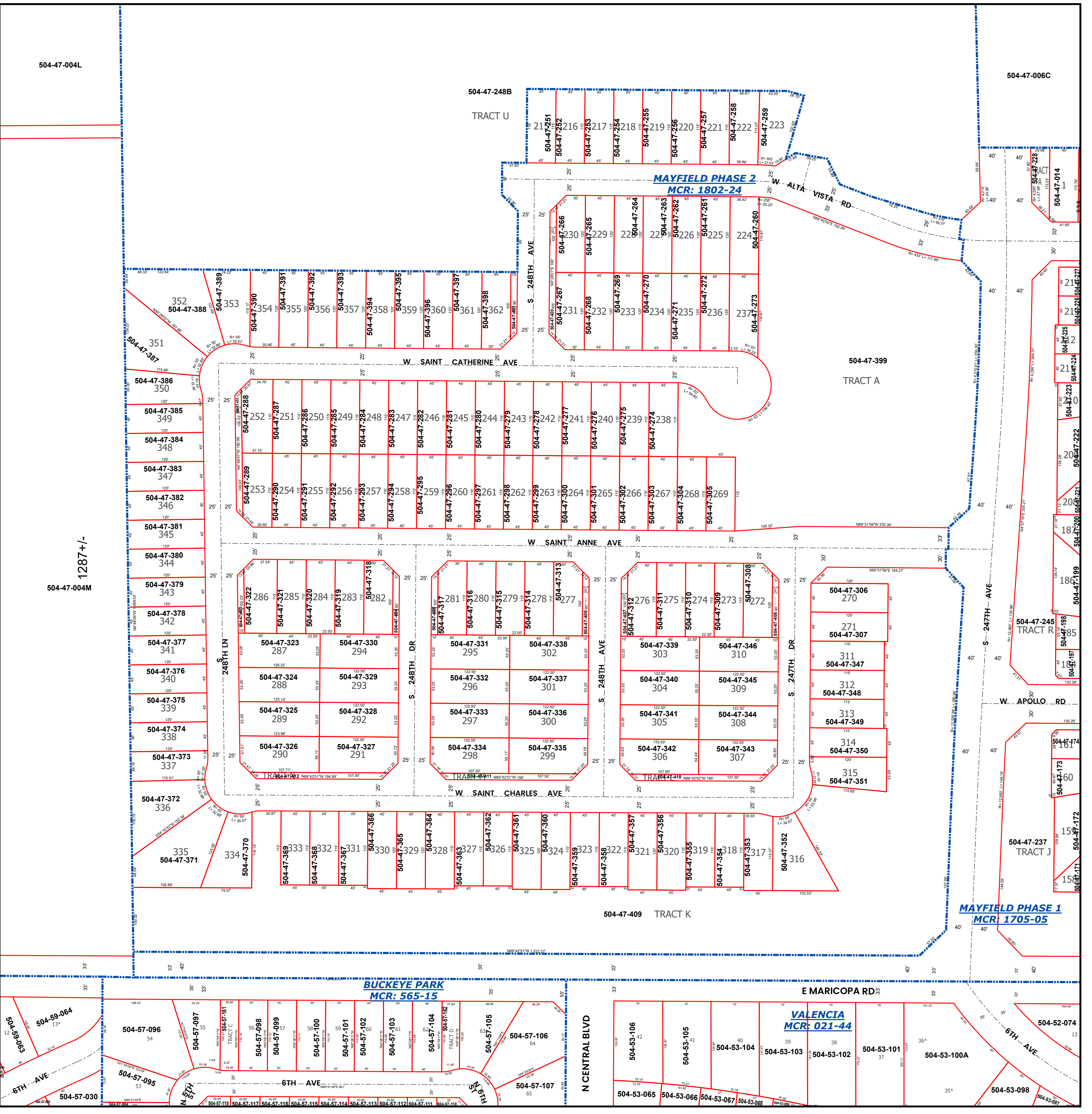
LEGEND: Tax Parcels (red outline), Sections (dashed blue outline), Subdivisions (dotted blue outline), Lots (thin red outline), Section Corners (circle with cross), Centerlines (dashed line)

Disclaimer - Indemnification
CAUTION! USERS SHOULD INDEPENDENTLY RESEARCH AND VERIFY INFORMATION WITHIN THIS DATASET OR MAP BEFORE RELYING ON IT.

The Assessor's Office has compiled information within this dataset or map that it uses to identify, classify, and value real and personal property. Please contact the Assessor's Office at 602 506-3406 if you believe any information is incomplete, out of date, or incorrect so that appropriate corrections can be addressed. Please note that a statutory process is also available to correct errors pursuant to Arizona Revised Statutes 42-16254.

The Assessor does not guarantee that any information contained within this dataset or map is accurate, complete or current. In many instances, the Assessor has gathered information from independent sources and made it available within this dataset or map, and the original information may have contained errors and omissions. Errors and omissions may have occurred in the process of gathering, interpreting, and reporting the information. Information within this dataset or map is not updated "real time." In addition, Users are cautioned that the process used within this dataset or map to illustrate the boundaries of adjacent parcels is not always consistent with the recorded documents for such parcels. The parcel boundaries depicted within this dataset or maps are for illustrative purposes only, and the exact relationship of adjacent parcels should be independently researched and verified. The information provided within this dataset or map is not the equivalent of a title report or a real estate survey. Users should independently research, investigate, and verify all information before relying on it or using it in the preparation of legal documents.

Map Reprint Date: 2/25/2026



504-47-004L

504-47-006C

504-47-248B

TRACT U

MAYFIELD PHASE 2
MCR: 1802-24

W ALTA VISTA RD

504-47-399

TRACT A

W SAINT ANNE AVE

W SAINT CHARLES AVE

504-47-409 TRACT K

MAYFIELD PHASE 1
MCR: 1705-05

BUCKEYE PARK
MCR: 565-15

VALENCIA
MCR: 021-44

1287 +/-
504-47-004M

504-57-030

504-57-035

504-57-040

504-57-045

504-57-050

504-57-055

504-57-060

504-57-065

504-57-070

504-57-075

504-57-080

504-57-085

504-57-090

504-57-095

504-57-100

504-59-063

504-59-064

504-57-096

504-57-097

504-57-098

504-57-099

504-57-100

504-57-101

504-57-102

504-57-103

504-57-104

504-57-105

504-57-106

504-57-107

504-57-108

504-57-109

504-57-031

504-57-032

504-57-033

504-57-034

504-57-035

504-57-036

504-57-037

504-57-038

504-57-039

504-57-040

504-57-041

504-57-042

504-57-043

504-57-044

504-57-045

504-57-046

504-57-036

504-57-037

504-57-038

504-57-039

504-57-040

504-57-041

504-57-042

504-57-043

504-57-044

504-57-045

504-57-046

504-57-047

504-57-048

504-57-049

504-57-050

504-57-051

504-57-031

504-57-032

504-57-033

504-57-034

504-57-035

504-57-036

504-57-037

504-57-038

504-57-039

504-57-040

504-57-041

504-57-042

504-57-043

504-57-044

504-57-045

504-57-046

504-57-036

504-57-037

504-57-038

504-57-039

504-57-040

504-57-041

504-57-042

504-57-043

504-57-044

504-57-045

504-57-046

504-57-047

504-57-048

504-57-049

504-57-050

504-57-051

504-57-031

504-57-032

504-57-033

504-57-034

504-57-035

504-57-036

504-57-037

504-57-038

504-57-039

504-57-040

504-57-041

504-57-042

504-57-043

504-57-044

504-57-045

504-57-046

504-57-036

504-57-037

504-57-038

504-57-039

504-57-040

504-57-041

504-57-042

504-57-043

504-57-044

504-57-045

504-57-046

504-57-047

504-57-048

504-57-049

504-57-050

504-57-051

504-57-031

504-57-032

504-57-033

504-57-034

504-57-035

504-57-036

504-57-037

504-57-038

504-57-039

504-57-040

504-57-041

504-57-042

504-57-043

504-57-044

504-57-045

504-57-046

504-57-036

504-57-037

504-57-038

504-57-039

504-57-040

504-57-041

504-57-042

504-57-043

504-57-044

504-57-045

504-57-046

504-57-047

504-57-048

504-57-049

504-57-050

504-57-051

504-57-031

504-57-032

504-57-033

504-57-034

504-57-035

504-57-036

504-57-037

504-57-038

504-57-039

504-57-040

504-57-041

504-57-042

504-57-043

504-57-044

504-57-045

504-57-046

504-57-036

504-57-037

504-57-038

504-57-039

504-57-040

504-57-041

504-57-042

504-57-043

504-57-044

504-57-045

504-57-046

504-57-047

504-57-048

504-57-049

504-57-050

504-57-051

504-57-031

504-57-032

504-57-033

504-57-034

504-57-035

504-57-036

504-57-037

504-57-038

504-57-039

504-57-040

504-57-041

504-57-042

504-57-043

504-57-044