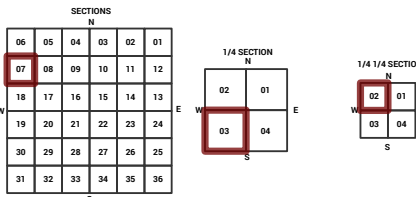
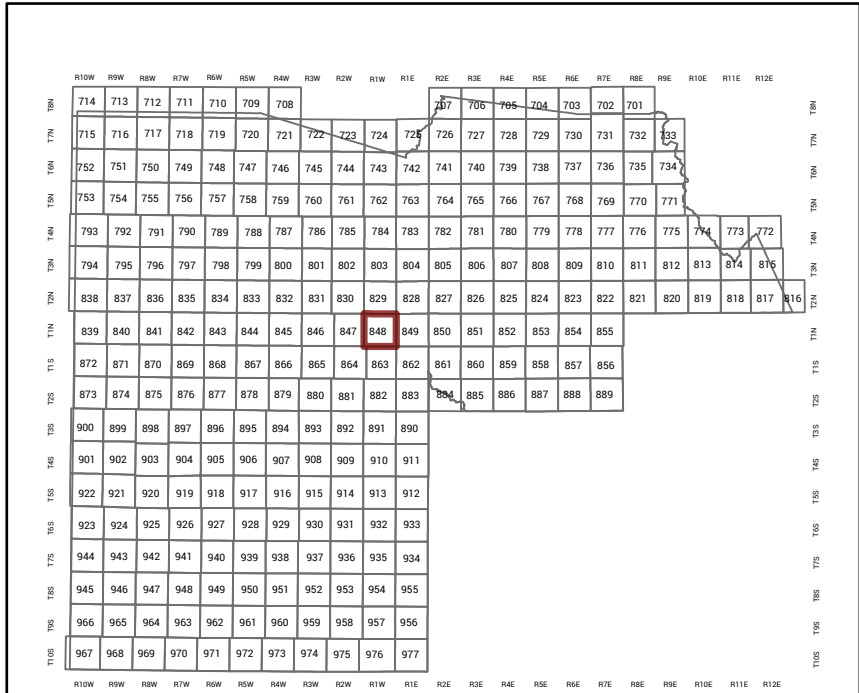


MARICOPA COUNTY  
STATE OF ARIZONA

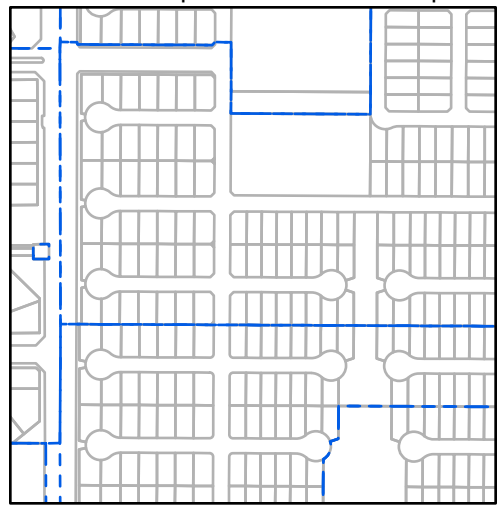
PT. SECTION 7 T01N R01W

848 - 07 - 03 - 02

TOWNSHIP & RANGE SECTION 1/4 SECTION 1/4 1/4 SECTION



Parcels updated within this map



MARICOPA COUNTY  
ASSESSOR'S OFFICE  
301 W. Jefferson Street  
Phoenix, AZ 85003  
<https://mcaassessor.maricopa.gov>

LEGEND: Tax Parcels, Sections, Subdivisions, Lots, Section Corners, Centerlines

Disclaimer - Indemnification  
CAUTION! USERS SHOULD INDEPENDENTLY RESEARCH AND VERIFY INFORMATION WITHIN THIS DATASET OR MAP BEFORE RELYING ON IT.

The Assessor's Office has compiled information within this dataset or map that it uses to identify, classify, and value real and personal property. Please contact the Assessor's Office at 602 506-3406 if you believe any information is incomplete, out of date, or incorrect so that appropriate corrections can be addressed. Please note that a statutory process is also available to correct errors pursuant to Arizona Revised Statutes 42-16254.

The Assessor does not guarantee that any information contained within this dataset or map is accurate, complete or current. In many instances, the Assessor has gathered information from independent sources and made it available within this dataset or map, and the original information may have contained errors and omissions. Errors and omissions may have occurred in the process of gathering, interpreting, and reporting the information. Information within this dataset or map is not updated "real time." In addition, Users are cautioned that the process used within this dataset or map to illustrate the boundaries of adjacent parcels is not always consistent with the recorded documents for such parcels. The parcel boundaries depicted within this dataset or maps are for illustrative purposes only, and the exact relationship of adjacent parcels should be independently researched and verified. The information provided within this dataset or map is not the equivalent of a title report or a real estate survey. Users should independently research, investigate, and verify all information before relying on it or using it in the preparation of legal documents.

Map Reprint Date: 2/26/2026

BENNETT MEADOWS  
MCR: 1598-08

TRACT B  
500-09-535

500-93-115  
95

500-93-114  
94

500-93-113  
93

500-93-112  
92

500-93-111  
91

500-93-110  
90

500-93-141

500-93-143

500-93-145

500-93-092

500-93-091  
72

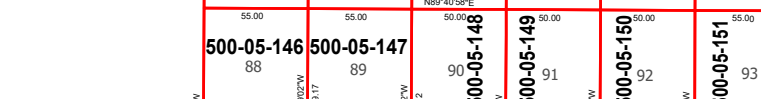
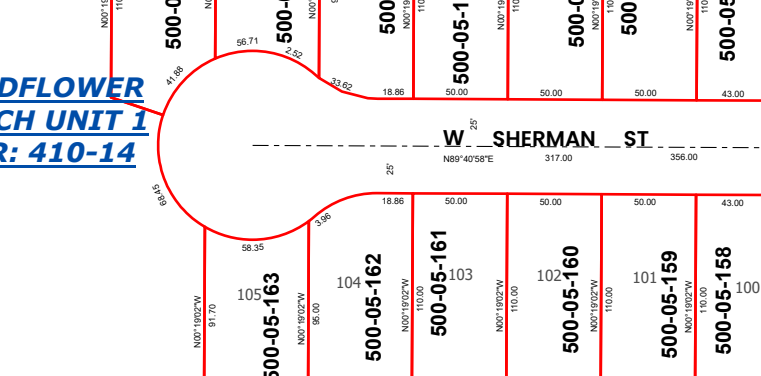
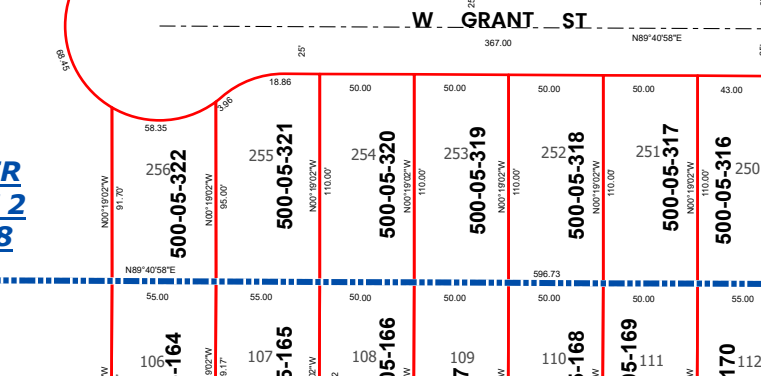
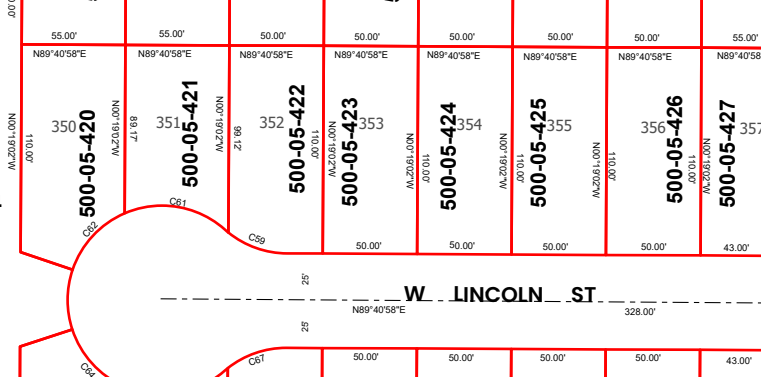
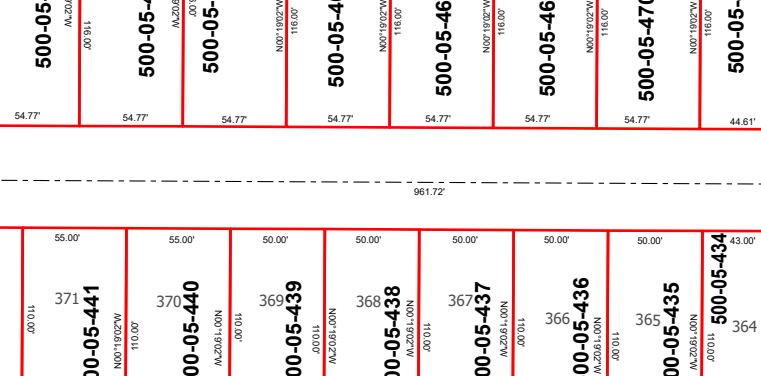
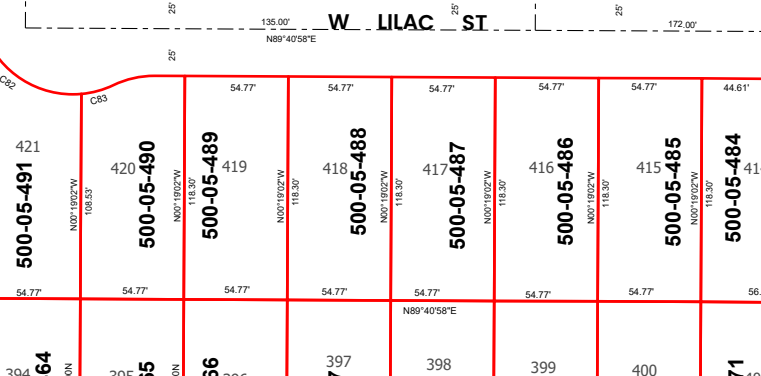
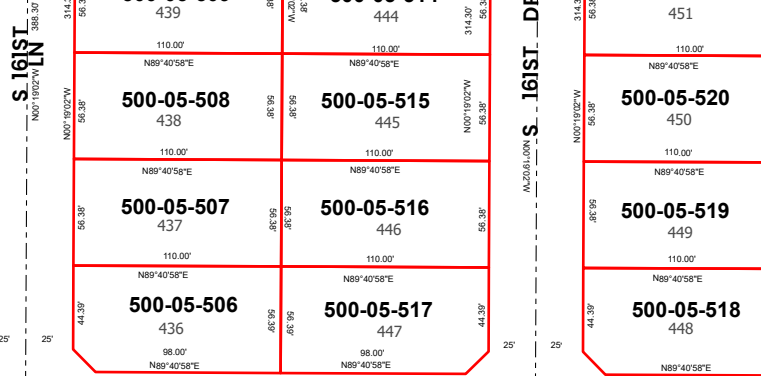
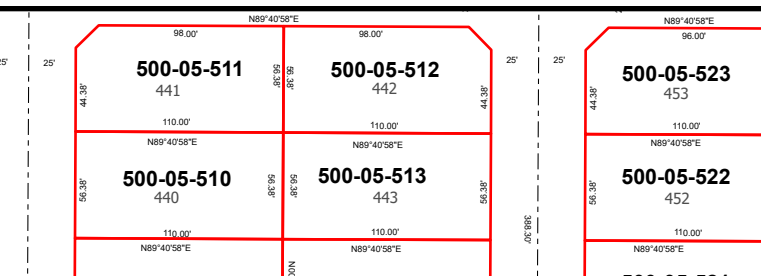
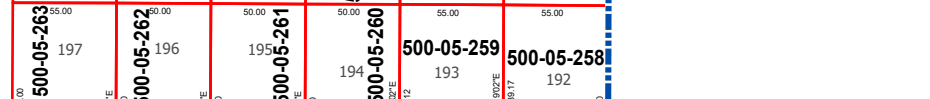
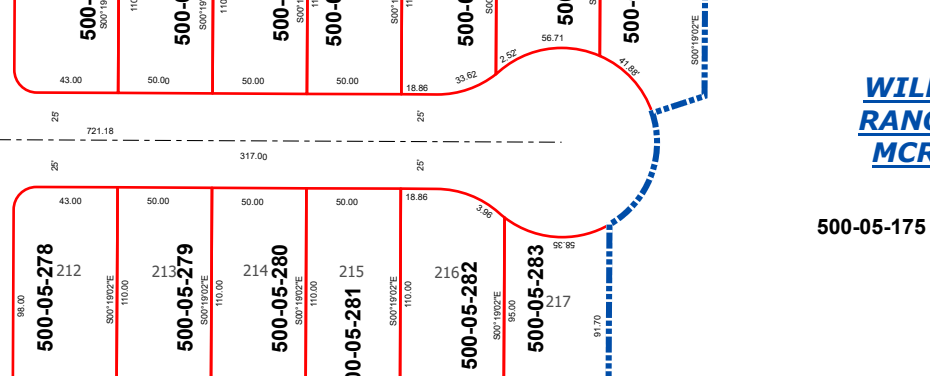
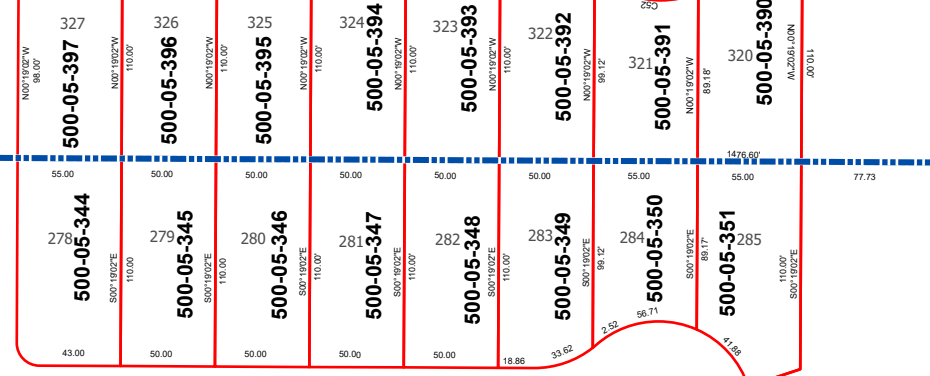
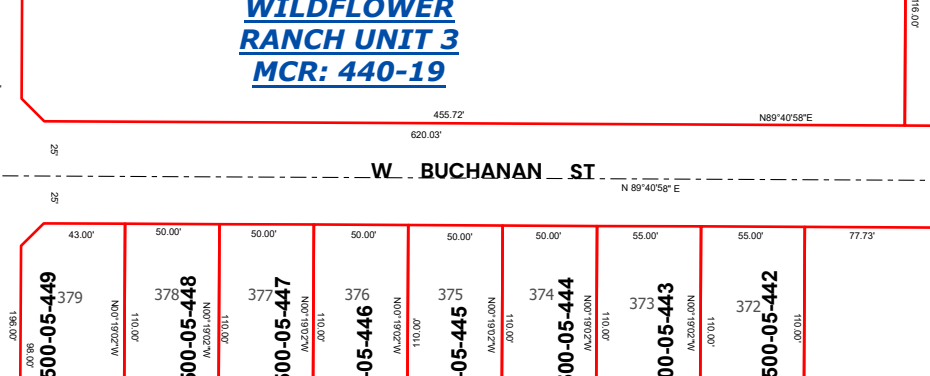
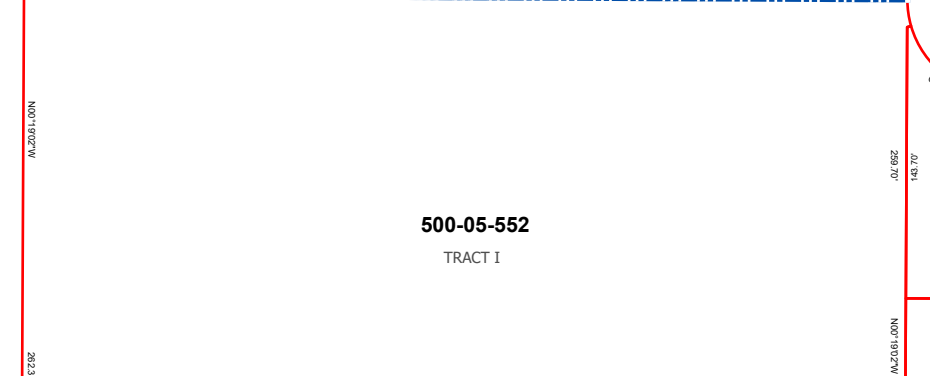
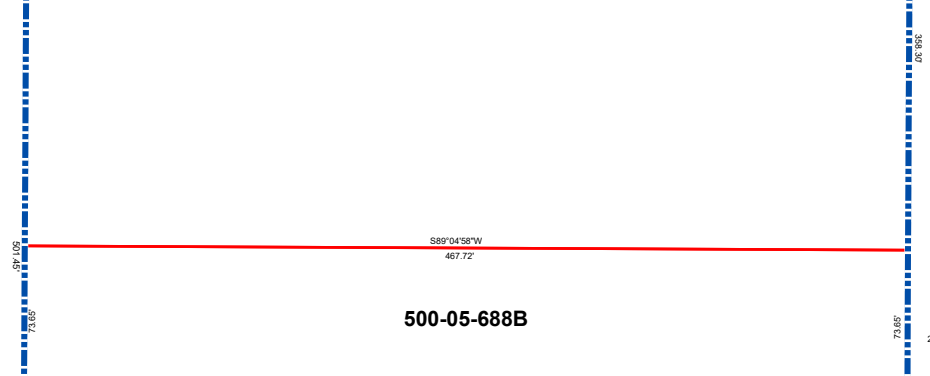
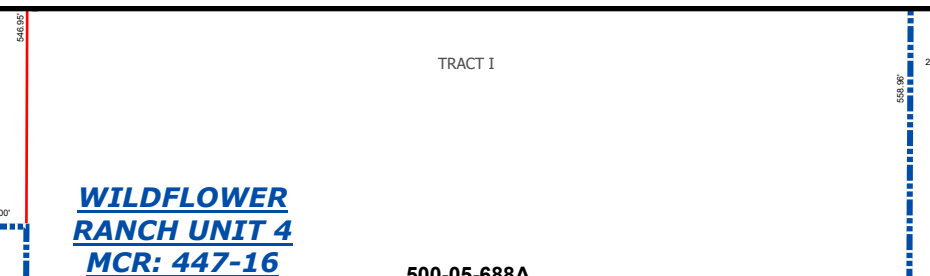
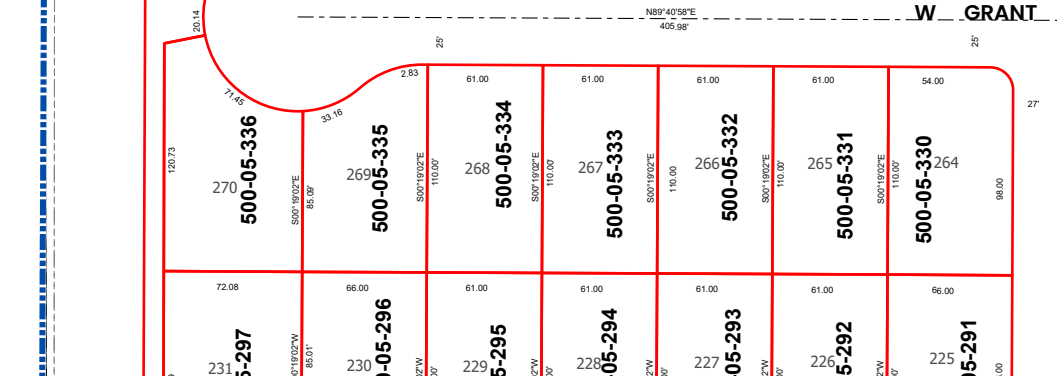
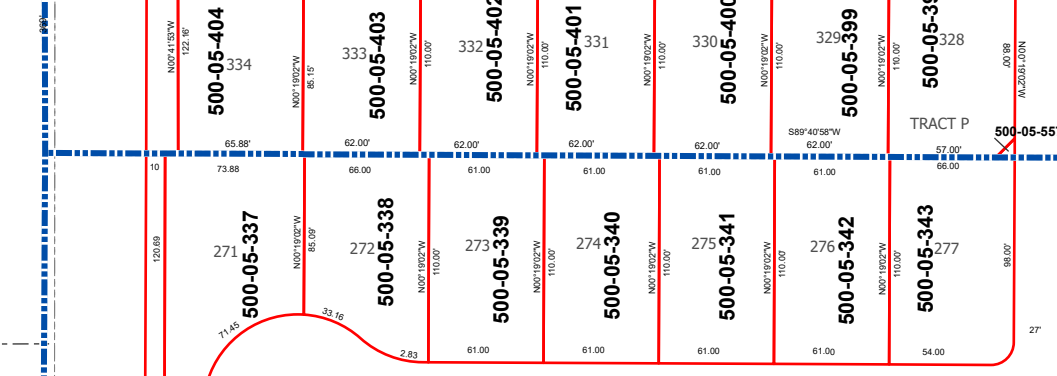
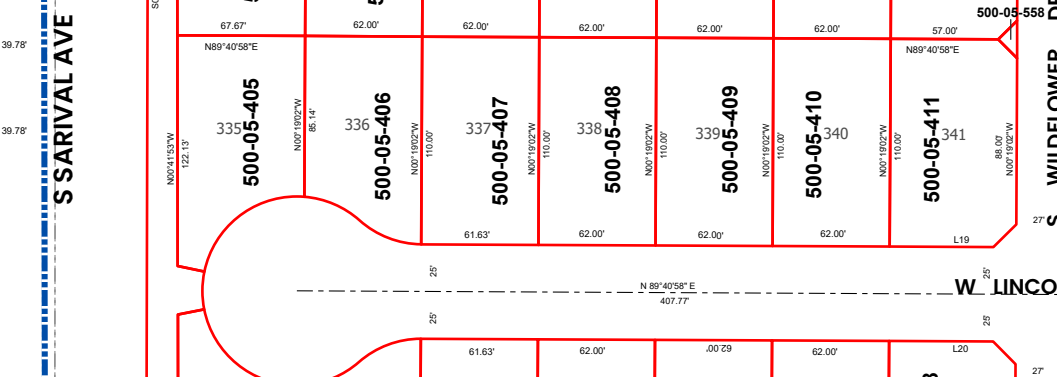
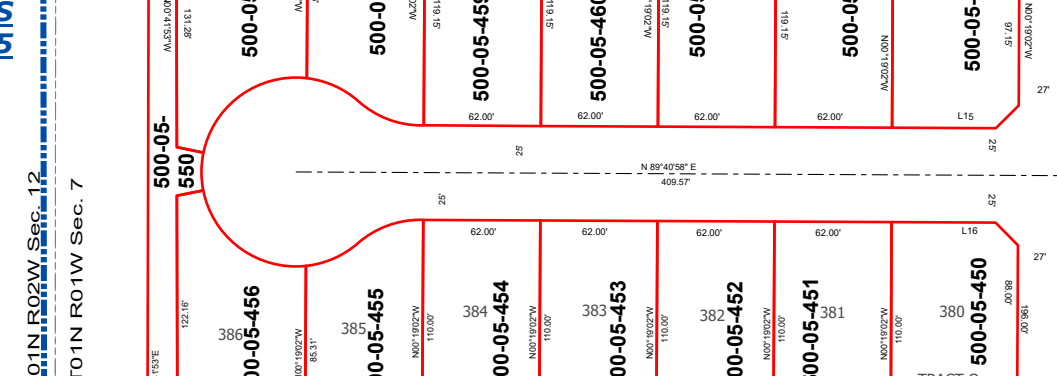
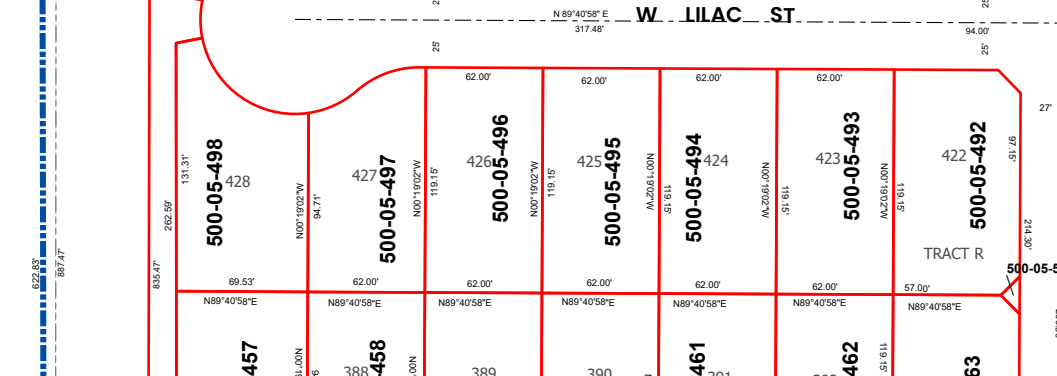
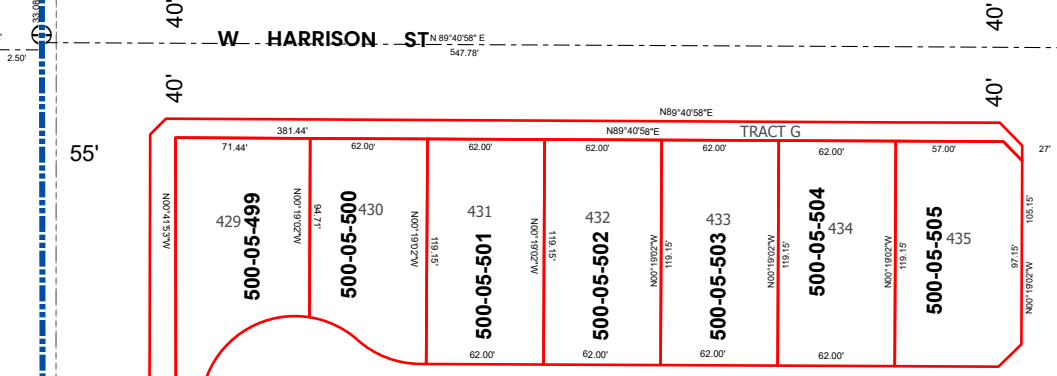
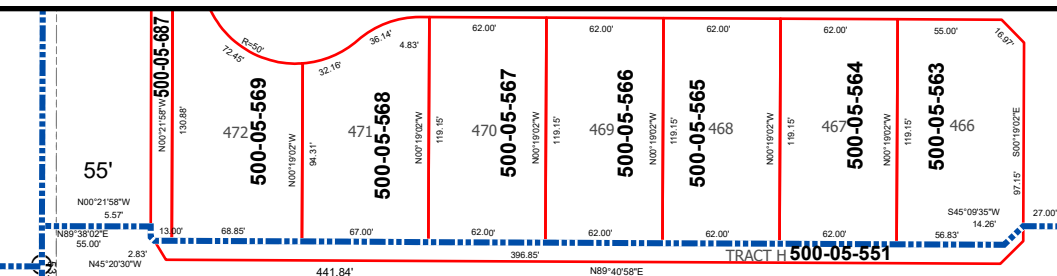
500-93-068  
49

500-93-067  
48

500-93-066

VILLAS GOODYEAR  
MCR: 1729-38

500-05-993



WILDFLOWER RANCH UNIT 4  
MCR: 447-16

500-05-688A

500-05-688B

500-05-552

WILDFLOWER RANCH UNIT 3  
MCR: 440-19

500-05-554

500-05-554

500-05-381

WILDFLOWER RANCH UNIT 2  
MCR: 420-48

500-05-175

WILDFLOWER RANCH UNIT 1  
MCR: 410-14

500-05-146

S 161ST DR

S 161ST DR

S 161ST DR

S 161ST DR

S 161ST DR

S 161ST DR

S 161ST DR

TO 101N R02W Sec. 12  
S SARIVAL AVE TO 101N R01W Sec. 7