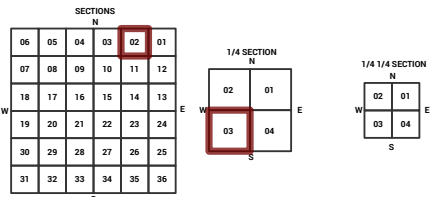


MARICOPA COUNTY
STATE OF ARIZONA

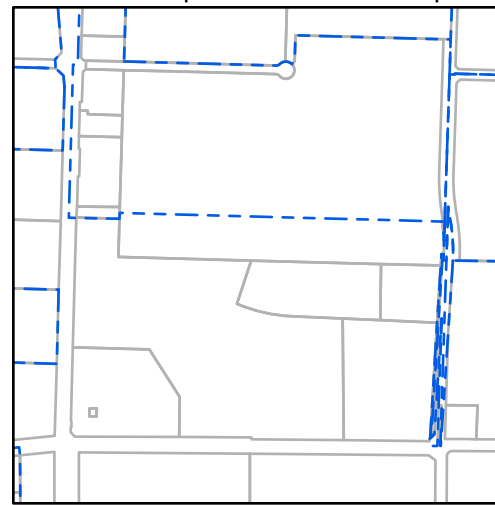
PT. SECTION 2 T01N R01E

849 - 02 - 03 - 00

TOWNSHIP & RANGE SECTION 1/4 SECTION 1/4 1/4 SECTION



Parcels updated within this map



MARICOPA COUNTY
ASSESSOR'S OFFICE
301 W. Jefferson Street
Phoenix, AZ 85003



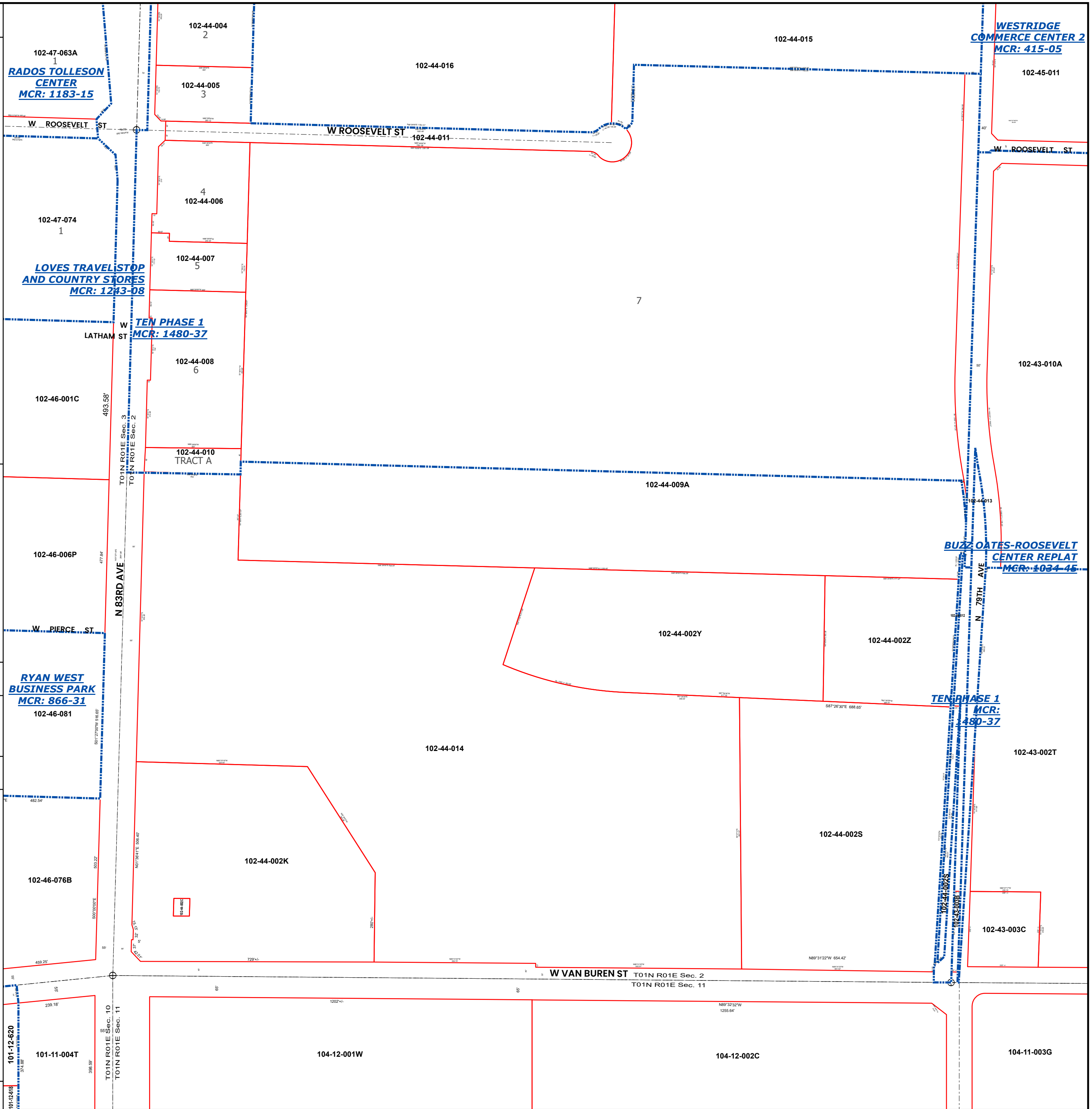
LEGEND: Tax Parcels (red outline), Sections (dotted outline), Subdivisions (dashed outline), Lots (thin red outline), Section Corners (circle with cross), Centerlines (dashed line)

Disclaimer - Indemnification
CAUTION! USERS SHOULD INDEPENDENTLY RESEARCH AND VERIFY INFORMATION WITHIN THIS DATASET OR MAP BEFORE RELYING ON IT.

The Assessor's Office has compiled information within this dataset or map that it uses to identify, classify, and value real and personal property. Please contact the Assessor's Office at 602 506-3406 if you believe any information is incomplete, out of date, or incorrect so that appropriate corrections can be addressed. Please note that a statutory process is also available to correct errors pursuant to Arizona Revised Statutes 42-16254.

The Assessor does not guarantee that any information contained within this dataset or map is accurate, complete or current. In many instances, the Assessor has gathered information from independent sources and made it available within this dataset or map, and the original information may have contained errors and omissions. Errors and omissions may have occurred in the process of gathering, interpreting, and reporting the information. Information within this dataset or map is not updated "real time." In addition, Users are cautioned that the process used within this dataset or map to illustrate the boundaries of adjacent parcels is not always consistent with the recorded documents for such parcels. The parcel boundaries depicted within this dataset or maps are for illustrative purposes only, and the exact relationship of adjacent parcels should be independently researched and verified. The information provided within this dataset or map is not the equivalent of a title report or a real estate survey. Users should independently research, investigate, and verify all information before relying on it or using it in the preparation of legal documents.

Map Reprint Date: 2/26/2026



102-47-063A
1
RADOS TOLLESON CENTER
MCR: 1183-15

102-47-074
1
LOVES TRAVEL STOP AND COUNTRY STORES
MCR: 1243-08

102-44-010
TEN PHASE 1
MCR: 1480-37

102-46-081
RYAN WEST BUSINESS PARK
MCR: 866-31

102-43-003C
BUZZ OATES-ROOSEVELT CENTER REPLAT
MCR: 1034-45

102-43-002T
TEN PHASE 1
MCR: 1480-37

102-45-011
WESTRIDGE COMMERCE CENTER 2
MCR: 415-05

101-12-620
TOTIN R01E Sec. 10
TOTIN R01E Sec. 11

104-12-002C
W VAN BUREN ST
T01N R01E Sec. 2
T01N R01E Sec. 11

102-46-001C
N 83RD AVE
TOTIN R01E Sec. 3
TOTIN R01E Sec. 2

102-43-010A
N 79TH AVE

102-46-006P
W PIERCE ST

102-47-074
W ROOSEVELT ST

102-44-016
W ROOSEVELT ST

102-45-011
W ROOSEVELT ST

101-11-004T
TOTIN R01E Sec. 10
TOTIN R01E Sec. 11

104-12-001W

104-12-002C

104-11-003G

101-12-620

102-46-076B

102-44-002K

102-44-002S

102-43-003C

102-46-006P

102-44-009A

102-44-002Y

102-44-002Z

102-44-014

102-46-081

102-43-002T

102-46-006P

102-46-001C

102-47-074

102-44-006

102-44-007

102-44-008

102-44-010 TRACT A

102-46-006P

102-47-063A

102-44-004

102-44-005

102-44-016

102-44-015

102-45-011

102-44-005

102-44-011

102-44-006

102-44-007

102-44-008

102-44-010 TRACT A

102-46-006P

102-47-063A

102-44-004

102-44-005

102-44-016

102-44-015

102-45-011

102-44-005

102-44-011

102-44-006

102-44-007

102-44-008

102-44-010 TRACT A

102-46-006P

102-47-063A

102-44-004

102-44-005

102-44-016

102-44-015

102-45-011

102-44-005

102-44-011

102-44-006

102-44-007

102-44-008

102-44-010 TRACT A

102-46-006P

102-47-063A

102-44-004

102-44-005

102-44-016

102-44-015

102-45-011

102-44-005

102-44-011

102-44-006

102-44-007

102-44-008

102-44-010 TRACT A

102-46-006P

102-47-063A

102-44-004

102-44-005

102-44-016

102-44-015

102-45-011

102-44-005

102-44-011

102-44-006

102-44-007

102-44-008

102-44-010 TRACT A

102-46-006P

102-47-063A

102-44-004

102-44-005

102-44-016

102-44-015

102-45-011

102-44-005

102-44-011

102-44-006

102-44-007

102-44-008

102-44-010 TRACT A

102-46-006P

102-47-063A

102-44-004

102-44-005

102-44-016

102-44-015

102-45-011

102-44-005

102-44-011

102-44-006

102-44-007

102-44-008

102-44-010 TRACT A

102-46-006P

102-47-063A

102-44-004

102-44-005

102-44-016

102-44-015

102-45-011

102-44-005

102-44-011

102-44-006

102-44-007

102-44-008

102-44-010 TRACT A

102-46-006P

102-47-063A

102-44-004

102-44-005

102-44-016

102-44-015

102-45-011

102-44-005

102-44-011

102-44-006

102-44-007

102-44-008

102-44-010 TRACT A

102-46-006P

102-47-063A

102-44-004

102-44-005

102-44-016

102-44-015

102-45-011

102-44-005

102-44-011

102-44-006

102-44-007

102-44-008

102-44-010 TRACT A

102-46-006P

102-47-063A

102-44-004

102-44-005

102-44-016

102-44-015

102-45-011

102-44-005

102-44-011

102-44-006

102-44-007

102-44-008

102-44-010 TRACT A

102-46-006P

102-47-063A

102-44-004

102-44-005

102-44-016

102-44-015

102-45-011

102-44-005

102-44-011

102-44-006

102-44-007

102-44-008

102-44-010 TRACT A

102-46-006P

102-47-063A

102-44-004

102-44-005

102-44-016

102-44-015