

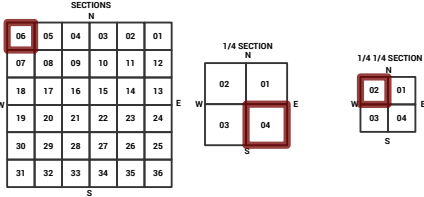
MARICOPA COUNTY  
STATE OF ARIZONA

PT. SECTION 6 T01N R01E

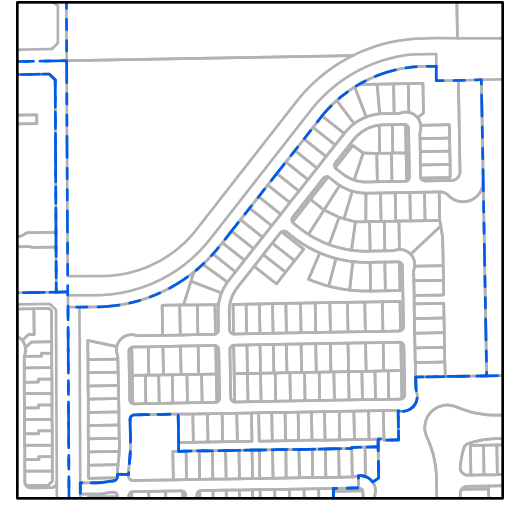
849 - 06 - 04 - 02

TOWNSHIP & RANGE SECTION 1/4 SECTION 1/4 1/4 SECTION

Grid of section numbers from 714 to 914, with section 849 highlighted in red.



Parcels updated within this map



MARICOPA COUNTY ASSESSOR'S OFFICE  
301 W. Jefferson Street  
Phoenix, AZ 85003  
MARICOPA COUNTY ASSESSOR'S OFFICE  
<https://mca.assessor.maricopa.gov>

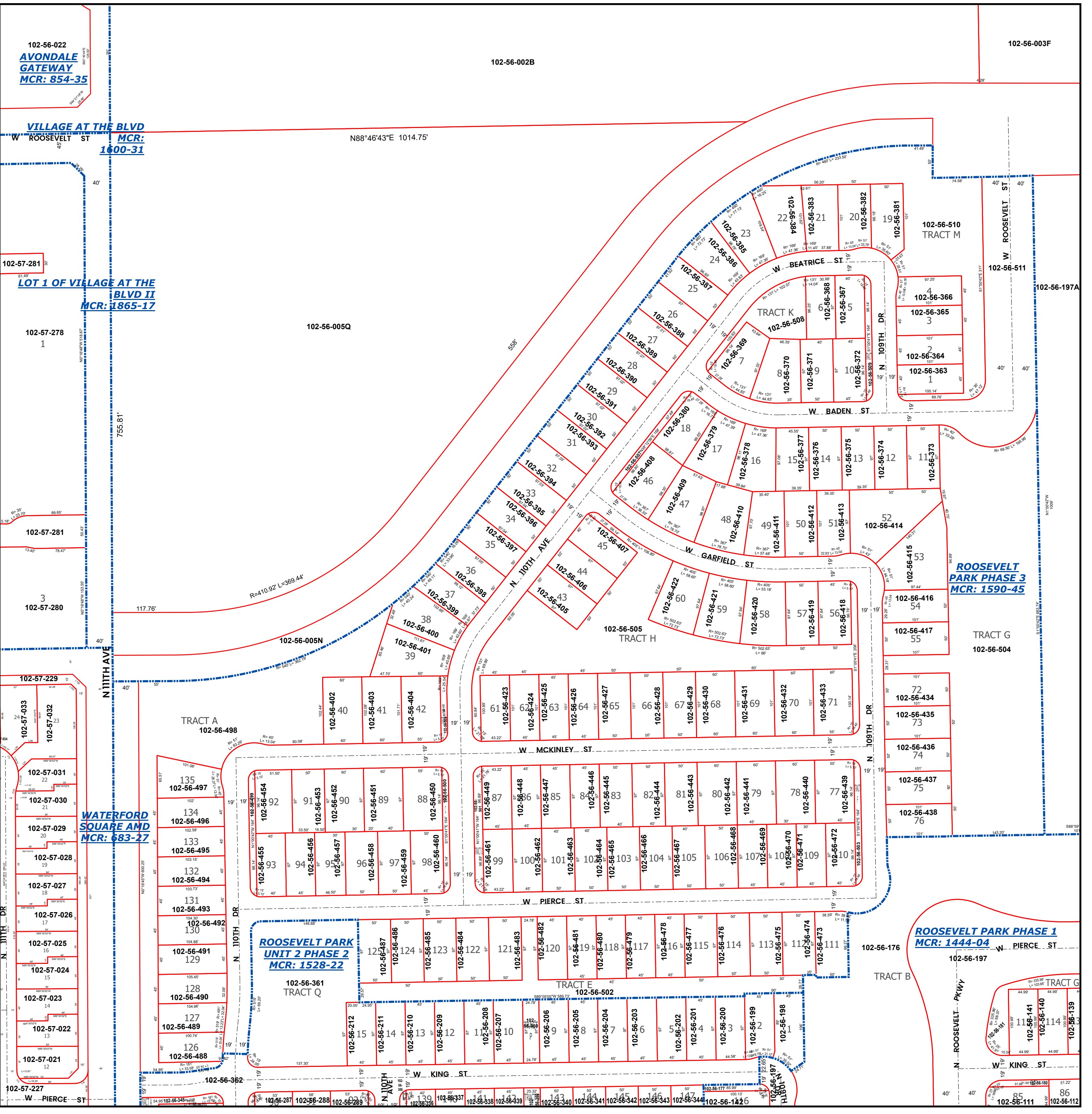
LEGEND: Tax Parcels, Sections, Subdivisions, Lots, Section Corners, Centerlines

Disclaimer - Indemnification  
CAUTION! USERS SHOULD INDEPENDENTLY RESEARCH AND VERIFY INFORMATION WITHIN THIS DATASET OR MAP BEFORE RELYING ON IT.

The Assessor's Office has compiled information within this dataset or map that it uses to identify, classify, and value real and personal property. Please contact the Assessor's Office at 602 506-3406 if you believe any information is incomplete, out of date, or incorrect so that appropriate corrections can be addressed. Please note that a statutory process is also available to correct errors pursuant to Arizona Revised Statutes 42-16254.

The Assessor does not guarantee that any information contained within this dataset or map is accurate, complete or current. In many instances, the Assessor has gathered information from independent sources and made it available within this dataset or map, and the original information may have contained errors and omissions. Errors and omissions may have occurred in the process of gathering, interpreting, and reporting the information. Information within this dataset or map is not updated "real time." In addition, Users are cautioned that the process used within this dataset or map to illustrate the boundaries of adjacent parcels is not always consistent with the recorded documents for such parcels. The parcel boundaries depicted within this dataset or maps are for illustrative purposes only, and the exact relationship of adjacent parcels should be independently researched and verified. The information provided within this dataset or map is not the equivalent of a title report or a real estate survey. Users should independently research, investigate, and verify all information before relying on it or using it in the preparation of legal documents.

Map Reprint Date: 2/26/2026



102-56-022  
AVONDALE GATEWAY  
MCR: 854-35

VILLAGE AT THE BLVD  
W ROOSEVELT ST  
MCR: 1600-31

102-57-281  
LOT 1 OF VILLAGE AT THE BLVD II  
MCR: 1865-17

102-57-281  
102-57-280  
3

102-57-033  
102-57-032  
22

102-57-031  
102-57-030  
21  
102-57-029  
20  
102-57-028  
19  
102-57-027  
18  
102-57-026  
17  
102-57-025  
16  
102-57-024  
15  
102-57-023  
14  
102-57-022  
13  
102-57-021  
12

102-57-227  
102-57-228  
102-57-229

WATERFORD SQUARE AND  
MCR: 683-27

ROOSEVELT PARK UNIT 2 PHASE 2  
MCR: 1528-22

ROOSEVELT PARK PHASE 1  
MCR: 1444-04

ROOSEVELT PARK PHASE 3  
MCR: 1590-45

102-56-003F

102-56-002B

102-56-005Q

TRACT A  
102-56-498

TRACT H  
102-56-505

TRACT Q  
102-56-361

TRACT E  
102-56-502

TRACT B

TRACT M  
102-56-510

TRACT K  
102-56-508

TRACT G  
102-56-504

102-56-197A

102-56-111  
102-56-112  
102-56-113  
102-56-114  
102-56-115  
102-56-116  
102-56-117  
102-56-118  
102-56-119  
102-56-120  
102-56-121  
102-56-122  
102-56-123  
102-56-124  
102-56-125  
102-56-126  
102-56-127  
102-56-128  
102-56-129  
102-56-130  
102-56-131  
102-56-132  
102-56-133  
102-56-134  
102-56-135  
102-56-136  
102-56-137  
102-56-138  
102-56-139  
102-56-140  
102-56-141  
102-56-142  
102-56-143  
102-56-144  
102-56-145  
102-56-146  
102-56-147  
102-56-148  
102-56-149  
102-56-150  
102-56-151  
102-56-152