

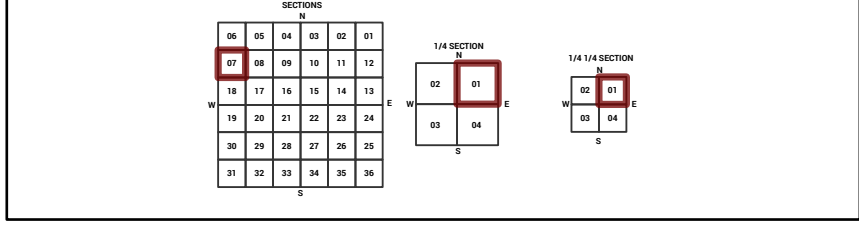
MARICOPA COUNTY
STATE OF ARIZONA

PT. SECTION 7 T01N R01E

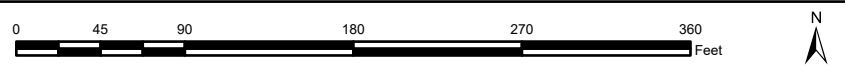
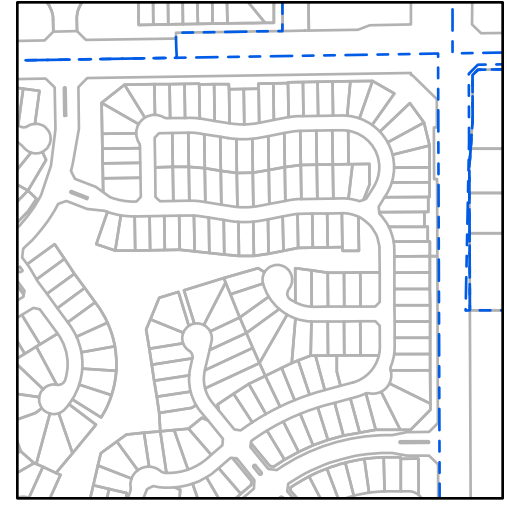
849 - 07 - 01 - 01

TOWNSHIP & RANGE SECTION 1/4 SECTION 1/4 1/4 SECTION

Grid map showing township and range coordinates for the area.



Parcels updated within this map



MARICOPA COUNTY
ASSESSOR'S OFFICE
301 W. Jefferson Street
Phoenix, AZ 85003



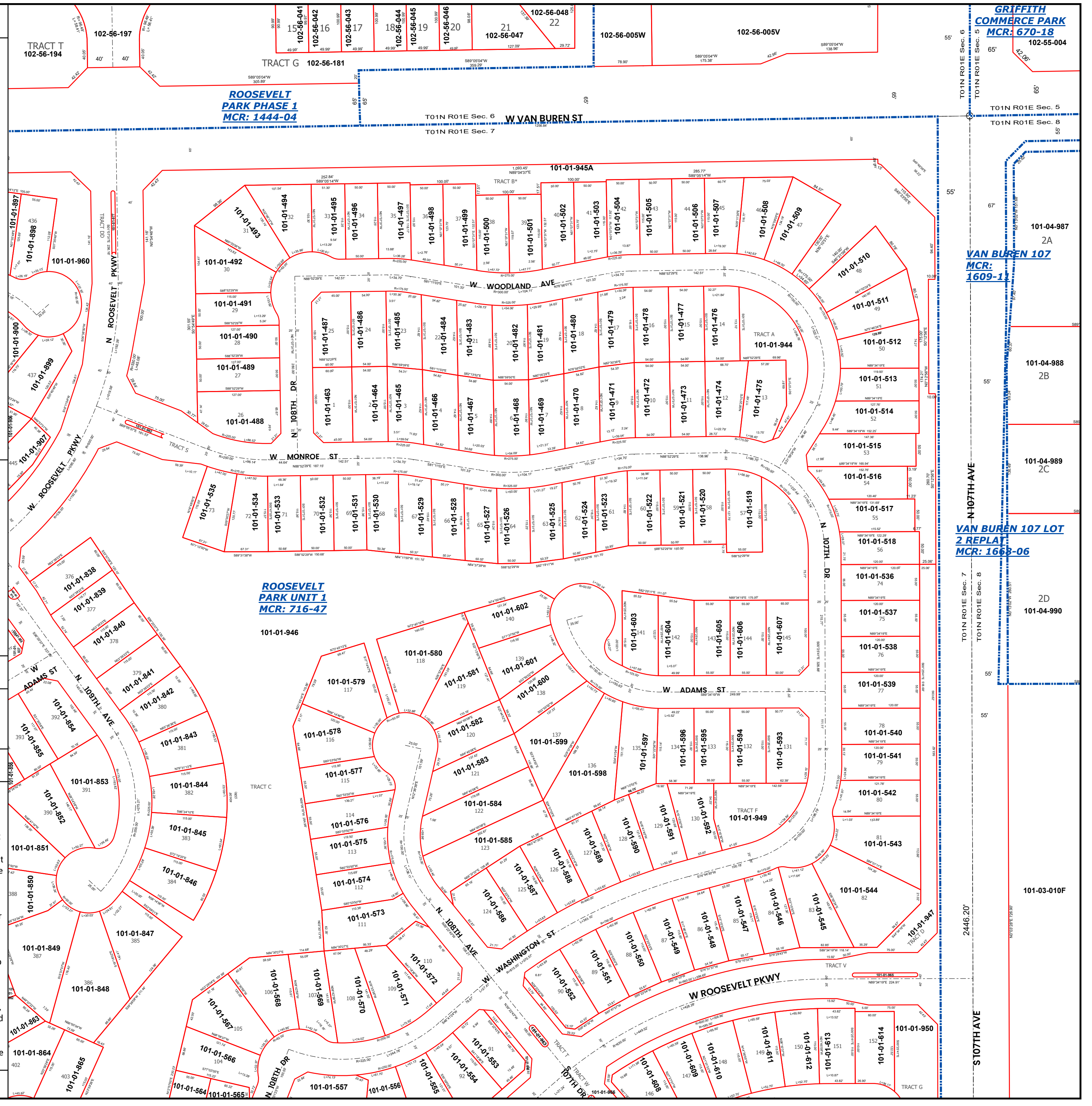
LEGEND: Tax Parcels, Sections, Subdivisions, Lots, Section Corners, Centerlines

Disclaimer - Indemnification
CAUTION! USERS SHOULD INDEPENDENTLY RESEARCH AND VERIFY INFORMATION WITHIN THIS DATASET OR MAP BEFORE RELYING ON IT.

The Assessor's Office has compiled information within this dataset or map that it uses to identify, classify, and value real and personal property. Please contact the Assessor's Office at 602 506-3406 if you believe any information is incomplete, out of date, or incorrect so that appropriate corrections can be addressed. Please note that a statutory process is also available to correct errors pursuant to Arizona Revised Statutes 42-16254.

The Assessor does not guarantee that any information contained within this dataset or map is accurate, complete or current. In many instances, the Assessor has gathered information from independent sources and made it available within this dataset or map, and the original information may have contained errors and omissions. Errors and omissions may have occurred in the process of gathering, interpreting, and reporting the information. Information within this dataset or map is not updated "real time." In addition, Users are cautioned that the process used within this dataset or map to illustrate the boundaries of adjacent parcels is not always consistent with the recorded documents for such parcels. The parcel boundaries depicted within this dataset or maps are for illustrative purposes only, and the exact relationship of adjacent parcels should be independently researched and verified. The information provided within this dataset or map is not the equivalent of a title report or a real estate survey. Users should independently research, investigate, and verify all information before relying on it or using it in the preparation of legal documents.

Map Reprint Date: 2/26/2026



GRIFFITH
COMMERCE PARK
MCR: 670-18
102-55-004
102-56-048
102-56-047
102-56-046
102-56-045
102-56-044
102-56-043
102-56-042
102-56-041
102-56-005W
102-56-005V
101-01-987
2A
VAN BUREN 107
MCR: 1609-1
101-04-988
2B
101-04-989
2C
VAN BUREN 107 LOT
2 REPLAT
MCR: 1668-06
2D
101-04-990

TRACT T
102-56-194
TRACT G
102-56-181
ROOSEVELT
PARK PHASE 1
MCR: 1444-04
T01N R01E Sec. 6
W. VAN BUREN ST
T01N R01E Sec. 7

101-01-945A
TRACT B*
101-01-494
101-01-495
101-01-496
101-01-497
101-01-498
101-01-499
101-01-500
101-01-501
101-01-502
101-01-503
101-01-504
101-01-505
101-01-506
101-01-507
101-01-508
101-01-509
101-01-944
TRACT A
101-01-487
101-01-486
101-01-485
101-01-484
101-01-483
101-01-482
101-01-481
101-01-480
101-01-479
101-01-478
101-01-477
101-01-476
101-01-475
101-01-474
101-01-473
101-01-472
101-01-471
101-01-470
101-01-469
101-01-468
101-01-467
101-01-466
101-01-465
101-01-464
101-01-463
101-01-492
30
101-01-491
29
101-01-490
28
101-01-489
27
101-01-488
26
101-01-510
48
101-01-511
49
101-01-512
50
101-01-513
51
101-01-514
52
101-01-515
53
101-01-516
54
101-01-517
55
101-01-518
56
101-01-519
57
101-01-520
58
101-01-521
59
101-01-522
60
101-01-523
61
101-01-524
62
101-01-525
63
101-01-526
64
101-01-527
65
101-01-528
66
101-01-529
67
101-01-530
68
101-01-531
69
101-01-532
70
101-01-533
71
101-01-534
72
101-01-535
73

ROOSEVELT
PARK UNIT 1
MCR: 716-47
101-01-946
101-01-536
101-01-537
101-01-538
101-01-539
101-01-540
101-01-541
101-01-542
101-01-543
101-01-544
101-01-545
101-01-546
101-01-547
101-01-548
101-01-549
101-01-550
101-01-551
101-01-552
101-01-553
101-01-554
101-01-555
101-01-556
101-01-557
101-01-558
101-01-559
101-01-560
101-01-561
101-01-562
101-01-563
101-01-564
101-01-565
101-01-566
101-01-567
101-01-568
101-01-569
101-01-570
101-01-571
101-01-572
101-01-573
101-01-574
101-01-575
101-01-576
101-01-577
101-01-578
101-01-579
101-01-580
101-01-581
101-01-582
101-01-583
101-01-584
101-01-585
101-01-586
101-01-587
101-01-588
101-01-589
101-01-590
101-01-591
101-01-592
101-01-593
101-01-594
101-01-595
101-01-596
101-01-597
101-01-598
101-01-599
101-01-600
101-01-601
101-01-602
101-01-603
101-01-604
101-01-605
101-01-606
101-01-607

101-01-946
TRACT C
101-01-838
101-01-839
101-01-840
101-01-841
101-01-842
101-01-843
101-01-844
101-01-845
101-01-846
101-01-847
101-01-848
101-01-849
101-01-850
101-01-851
101-01-852
101-01-853
101-01-854
101-01-855
101-01-856
101-01-857
101-01-858
101-01-859
101-01-860
101-01-861
101-01-862
101-01-863
101-01-864
101-01-865
101-01-866
101-01-867
101-01-868
101-01-869
101-01-870
101-01-871
101-01-872
101-01-873
101-01-874
101-01-875
101-01-876
101-01-877
101-01-878
101-01-879
101-01-880
101-01-881
101-01-882
101-01-883
101-01-884
101-01-885
101-01-886
101-01-887
101-01-888
101-01-889
101-01-890
101-01-891
101-01-892
101-01-893
101-01-894
101-01-895
101-01-896
101-01-897
101-01-898
101-01-899
101-01-900
101-01-901
101-01-902
101-01-903
101-01-904
101-01-905
101-01-906
101-01-907
101-01-908
101-01-909
101-01-910
101-01-911
101-01-912
101-01-913
101-01-914
101-01-915
101-01-916
101-01-917
101-01-918
101-01-919
101-01-920
101-01-921
101-01-922
101-01-923
101-01-924
101-01-925
101-01-926
101-01-927
101-01-928
101-01-929
101-01-930
101-01-931
101-01-932
101-01-933
101-01-934
101-01-935
101-01-936
101-01-937
101-01-938
101-01-939
101-01-940
101-01-941
101-01-942
101-01-943
101-01-944
101-01-945
101-01-946
101-01-947
101-01-948
101-01-949
101-01-950
101-01-951
101-01-952
101-01-953
101-01-954
101-01-955
101-01-956
101-01-957
101-01-958
101-01-959
101-01-960
101-01-961
101-01-962
101-01-963
101-01-964
101-01-965
101-01-966
101-01-967
101-01-968
101-01-969
101-01-970
101-01-971
101-01-972
101-01-973
101-01-974
101-01-975
101-01-976
101-01-977
101-01-978
101-01-979
101-01-980
101-01-981
101-01-982
101-01-983
101-01-984
101-01-985
101-01-986
101-01-987
101-01-988
101-01-989
101-01-990
101-01-991
101-01-992
101-01-993
101-01-994
101-01-995
101-01-996
101-01-997
101-01-998
101-01-999
101-01-1000