

# MARICOPA COUNTY

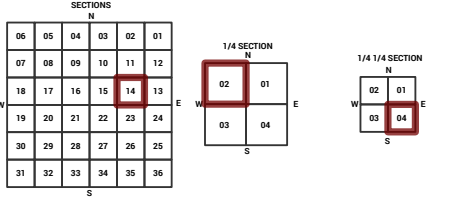
STATE OF ARIZONA

PT. SECTION 14 T01N R01E

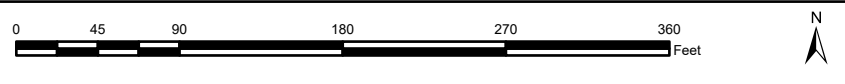
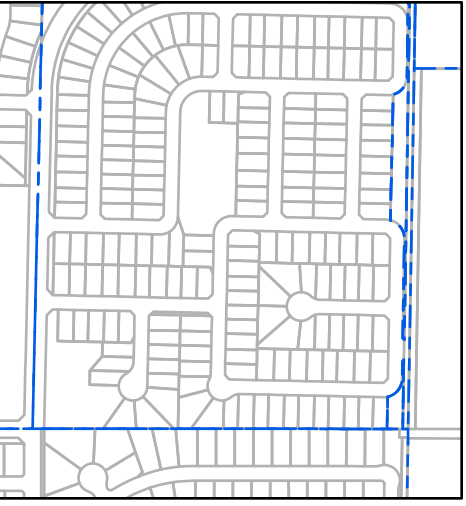
## 849 - 14 - 02 - 04

TOWNSHIP & RANGE SECTION 14 SECTION 14 1/4 SECTION 14 1/4 SECTION

714	713	712	711	710	709	708	707	706	705	704	703	702	701
702	701	700	699	698	697	696	695	694	693	692	691	690	689
688	687	686	685	684	683	682	681	680	679	678	677	676	675
674	673	672	671	670	669	668	667	666	665	664	663	662	661
660	659	658	657	656	655	654	653	652	651	650	649	648	647
646	645	644	643	642	641	640	639	638	637	636	635	634	633
632	631	630	629	628	627	626	625	624	623	622	621	620	619
618	617	616	615	614	613	612	611	610	609	608	607	606	605
604	603	602	601	600	599	598	597	596	595	594	593	592	591
590	589	588	587	586	585	584	583	582	581	580	579	578	577
576	575	574	573	572	571	570	569	568	567	566	565	564	563
562	561	560	559	558	557	556	555	554	553	552	551	550	549
548	547	546	545	544	543	542	541	540	539	538	537	536	535
534	533	532	531	530	529	528	527	526	525	524	523	522	521
520	519	518	517	516	515	514	513	512	511	510	509	508	507
506	505	504	503	502	501	500	499	498	497	496	495	494	493
492	491	490	489	488	487	486	485	484	483	482	481	480	479
478	477	476	475	474	473	472	471	470	469	468	467	466	465
464	463	462	461	460	459	458	457	456	455	454	453	452	451
450	449	448	447	446	445	444	443	442	441	440	439	438	437
436	435	434	433	432	431	430	429	428	427	426	425	424	423
422	421	420	419	418	417	416	415	414	413	412	411	410	409
408	407	406	405	404	403	402	401	400	399	398	397	396	395
394	393	392	391	390	389	388	387	386	385	384	383	382	381
380	379	378	377	376	375	374	373	372	371	370	369	368	367
366	365	364	363	362	361	360	359	358	357	356	355	354	353
352	351	350	349	348	347	346	345	344	343	342	341	340	339
338	337	336	335	334	333	332	331	330	329	328	327	326	325
324	323	322	321	320	319	318	317	316	315	314	313	312	311
310	309	308	307	306	305	304	303	302	301	300	299	298	297
296	295	294	293	292	291	290	289	288	287	286	285	284	283
282	281	280	279	278	277	276	275	274	273	272	271	270	269
268	267	266	265	264	263	262	261	260	259	258	257	256	255
254	253	252	251	250	249	248	247	246	245	244	243	242	241
240	239	238	237	236	235	234	233	232	231	230	229	228	227
226	225	224	223	222	221	220	219	218	217	216	215	214	213
212	211	210	209	208	207	206	205	204	203	202	201	200	199
198	197	196	195	194	193	192	191	190	189	188	187	186	185
184	183	182	181	180	179	178	177	176	175	174	173	172	171
170	169	168	167	166	165	164	163	162	161	160	159	158	157
156	155	154	153	152	151	150	149	148	147	146	145	144	143
142	141	140	139	138	137	136	135	134	133	132	131	130	129
128	127	126	125	124	123	122	121	120	119	118	117	116	115
114	113	112	111	110	109	108	107	106	105	104	103	102	101
100	99	98	97	96	95	94	93	92	91	90	89	88	87
86	85	84	83	82	81	80	79	78	77	76	75	74	73
72	71	70	69	68	67	66	65	64	63	62	61	60	59
58	57	56	55	54	53	52	51	50	49	48	47	46	45
44	43	42	41	40	39	38	37	36	35	34	33	32	31
30	29	28	27	26	25	24	23	22	21	20	19	18	17
16	15	14	13	12	11	10	9	8	7	6	5	4	3
2	1	0	0	0	0	0	0	0	0	0	0	0	0



Parcels updated within this map



MARICOPA COUNTY ASSESSOR'S OFFICE  
301 W. Jefferson Street  
Phoenix, AZ 85003  
<https://mcaassessor.maricopa.gov>

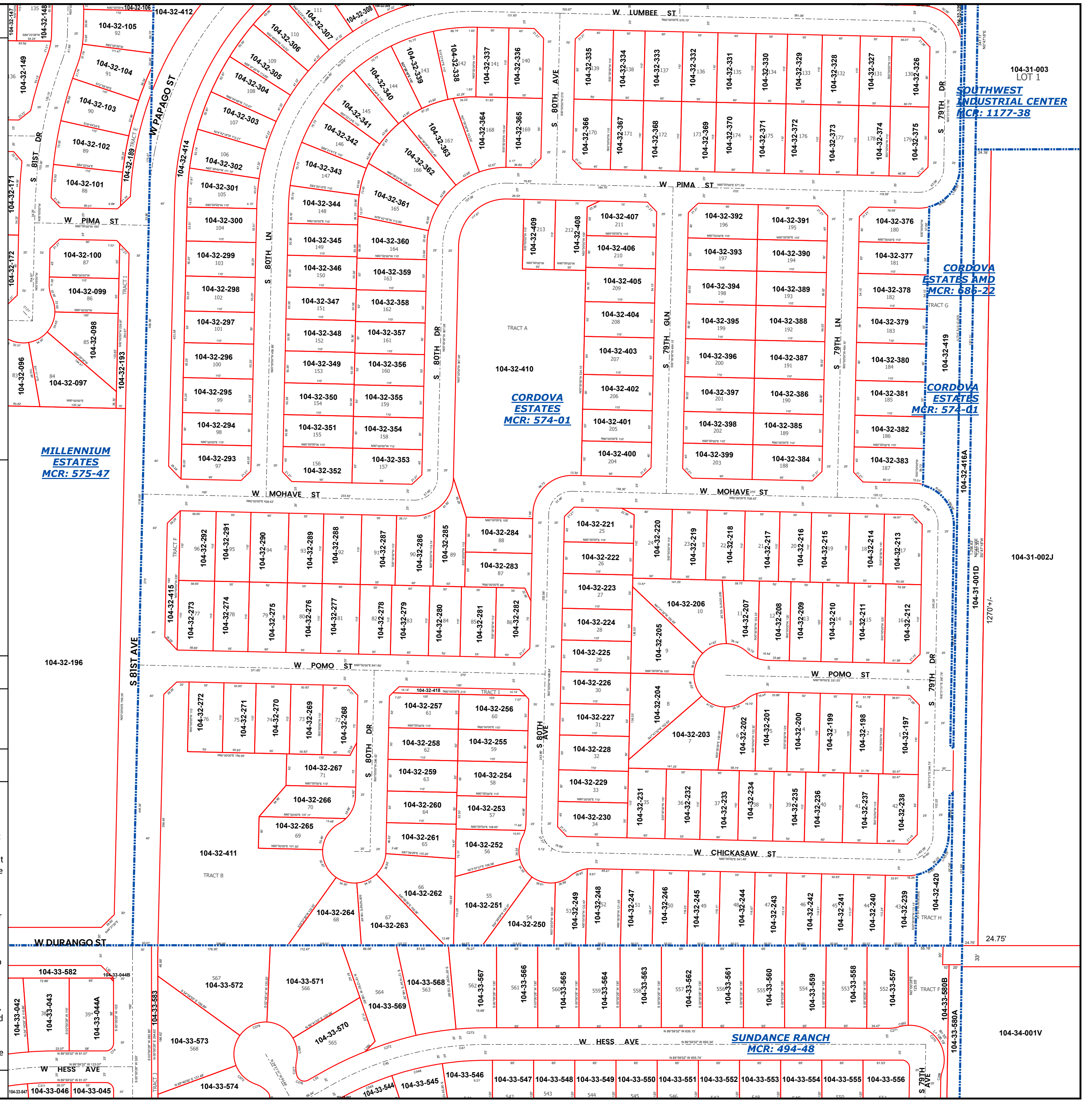
**LEGEND:** Tax Parcels (red outline), Sections (dashed line), Subdivisions (dotted line), Lots (small square), Section Corners (circle with cross), Centerlines (dashed line)

**Disclaimer - Indemnification**  
CAUTION! USERS SHOULD INDEPENDENTLY RESEARCH AND VERIFY INFORMATION WITHIN THIS DATASET OR MAP BEFORE RELYING ON IT.

The Assessor's Office has compiled information within this dataset or map that it uses to identify, classify, and value real and personal property. Please contact the Assessor's Office at 602 506-3406 if you believe any information is incomplete, out of date, or incorrect so that appropriate corrections can be addressed. Please note that a statutory process is also available to correct errors pursuant to Arizona Revised Statutes 42-16254.

The Assessor does not guarantee that any information contained within this dataset or map is accurate, complete or current. In many instances, the Assessor has gathered information from independent sources and made it available within this dataset or map, and the original information may have contained errors and omissions. Errors and omissions may have occurred in the process of gathering, interpreting, and reporting the information. Information within this dataset or map is not updated "real time." In addition, Users are cautioned that the process used within this dataset or map to illustrate the boundaries of adjacent parcels is not always consistent with the recorded documents for such parcels. The parcel boundaries depicted within this dataset or maps are for illustrative purposes only, and the exact relationship of adjacent parcels should be independently researched and verified. The information provided within this dataset or map is not the equivalent of a title report or a real estate survey. Users should independently research, investigate, and verify all information before relying on it or using it in the preparation of legal documents.

Map Reprint Date: 2/26/2026



104-31-003 LOT 1  
SOUTHWEST INDUSTRIAL CENTER  
MCR: 1177-38

CORDOVA ESTATES AND  
MCR: 686-22

CORDOVA ESTATES  
MCR: 574-01

104-31-002J

1270'±

24.75'

104-34-001V