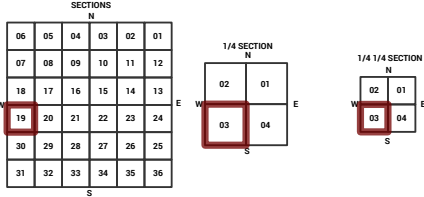
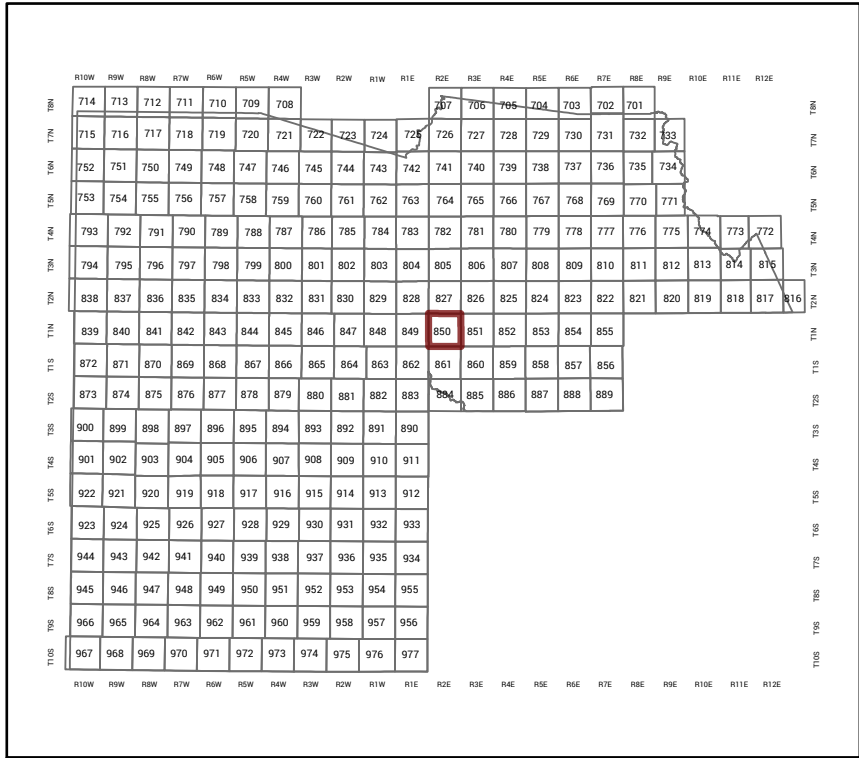


MARICOPA COUNTY STATE OF ARIZONA

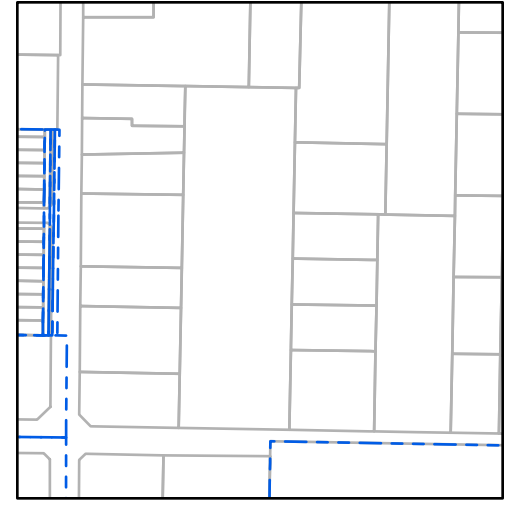
PT. SECTION 19 T01N R02E

850 - 19 - 03 - 03

TOWNSHIP & RANGE SECTION 1/4 SECTION 1/4 1/4 SECTION



Parcels updated within this map



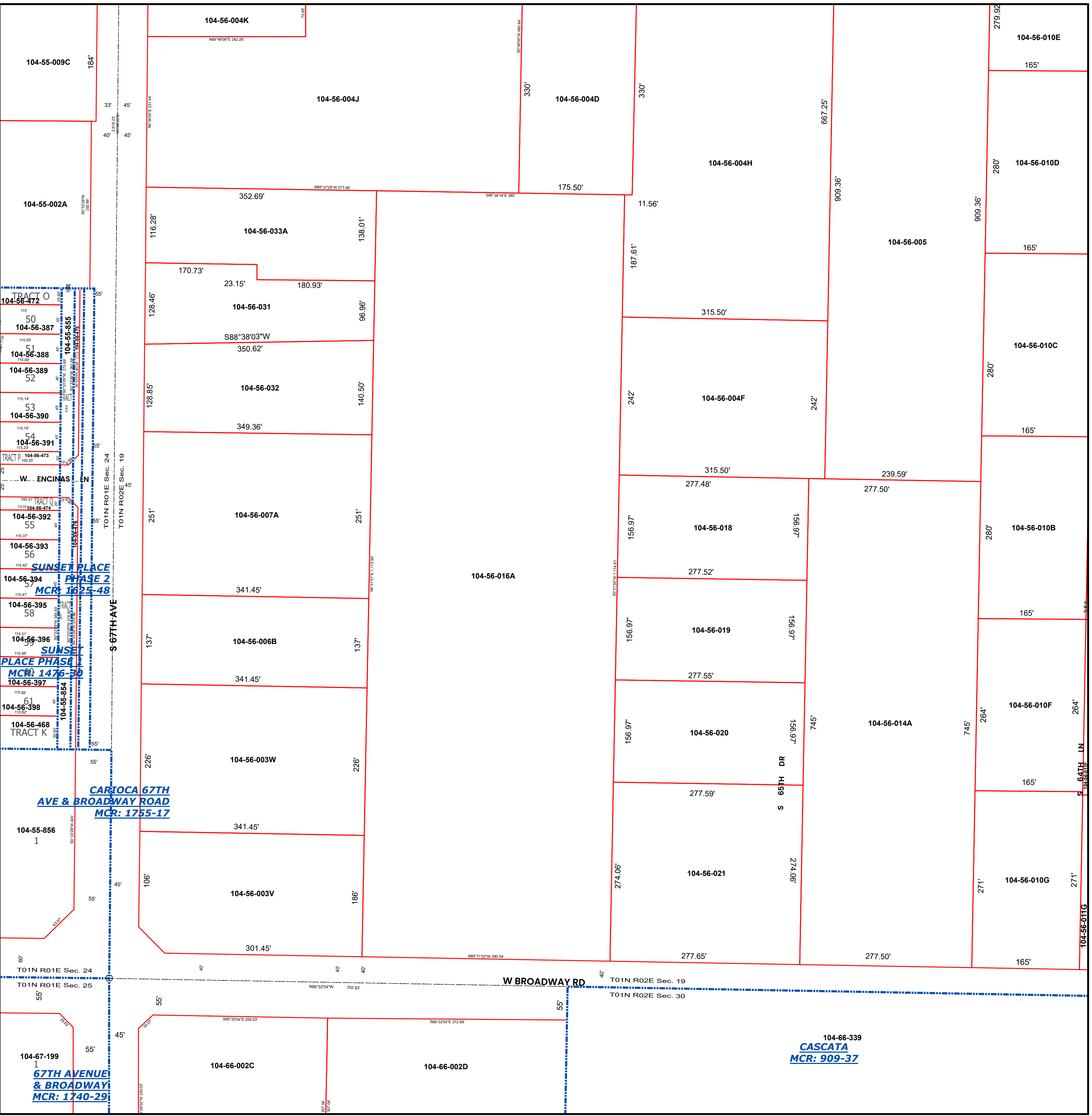
MARICOPA COUNTY ASSESSOR'S OFFICE 301 W. Jefferson Street Phoenix, AZ 85003

LEGEND: Tax Parcels, Sections, Subdivisions, Lots, Section Corners, Centerlines

Disclaimer - Indemnification CAUTION! USERS SHOULD INDEPENDENTLY RESEARCH AND VERIFY INFORMATION WITHIN THIS DATASET OR MAP BEFORE RELYING ON IT.

The Assessor's Office has compiled information within this dataset or map that it uses to identify, classify, and value real and personal property.

The Assessor does not guarantee that any information contained within this dataset or map is accurate, complete or current.



104-66-339 CASCATA MCR: 909-37