

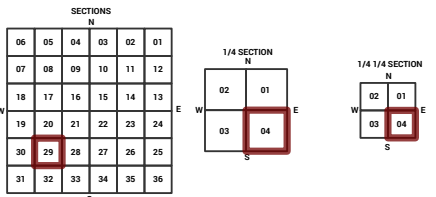
MARICOPA COUNTY STATE OF ARIZONA

PT. SECTION 29 T01N R02E

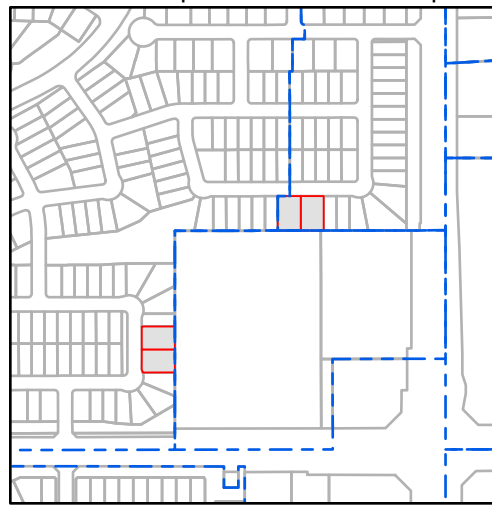
850 - 29 - 04 - 04

TOWNSHIP & RANGE SECTION 1/4 SECTION 1/4 1/4 SECTION

Grid of section numbers from 714 to 914, with section 850 highlighted in red.



Parcels updated within this map



MARICOPA COUNTY ASSESSOR'S OFFICE 301 W. Jefferson Street Phoenix, AZ 85003

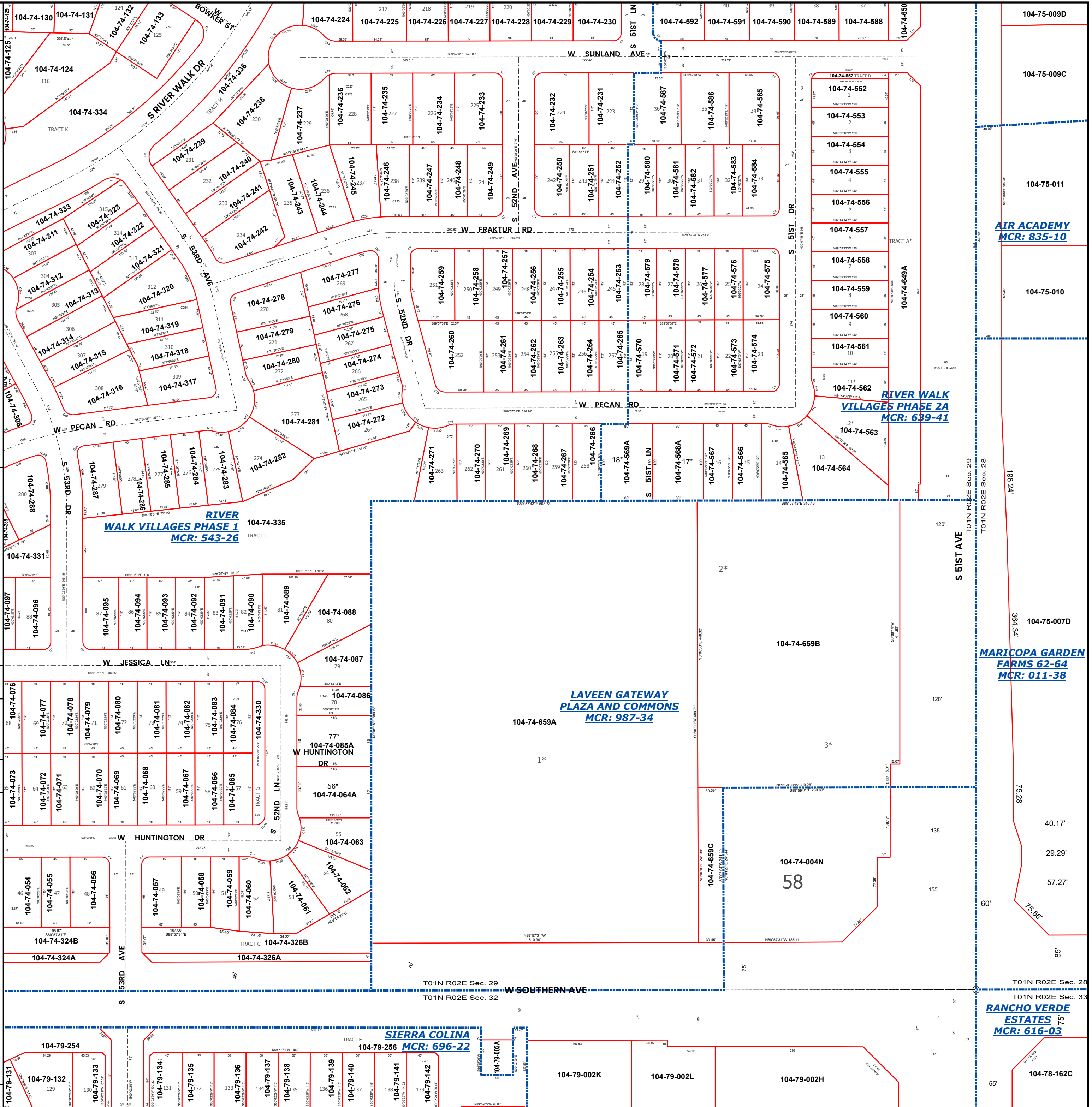


LEGEND: Tax Parcels, Sections, Subdivisions, Lots, Section Corners, Centerlines

Disclaimer - Indemnification CAUTION! USERS SHOULD INDEPENDENTLY RESEARCH AND VERIFY INFORMATION WITHIN THIS DATASET OR MAP BEFORE RELYING ON IT.

The Assessor's Office has compiled information within this dataset or map that it uses to identify, classify, and value real and personal property. Please contact the Assessor's Office at 602 506-3406 if you believe any information is incomplete, out of date, or incorrect so that appropriate corrections can be addressed.

The Assessor does not guarantee that any information contained within this dataset or map is accurate, complete or current. In many instances, the Assessor has gathered information from independent sources and made it available within this dataset or map, and the original information may have contained errors and omissions.



AIR ACADEMY MCR: 835-10

RIVER WALK VILLAGES PHASE 2A MCR: 639-41

RIVER WALK VILLAGES PHASE 1 MCR: 543-26

LAVEEN GATEWAY PLAZA AND COMMONS MCR: 987-34

SIERRA COLINA MCR: 696-22

MARICOPA GARDEN FARMS 62-64 MCR: 011-38

RANCHO VERDE ESTATES MCR: 616-03