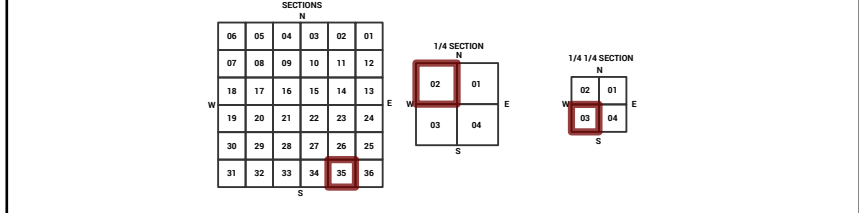
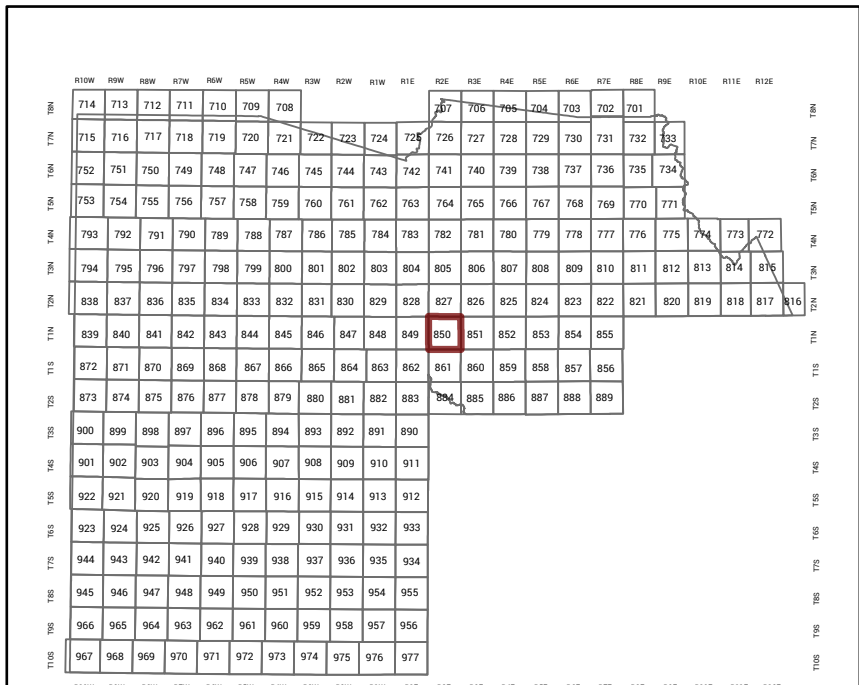


MARICOPA COUNTY  
STATE OF ARIZONA

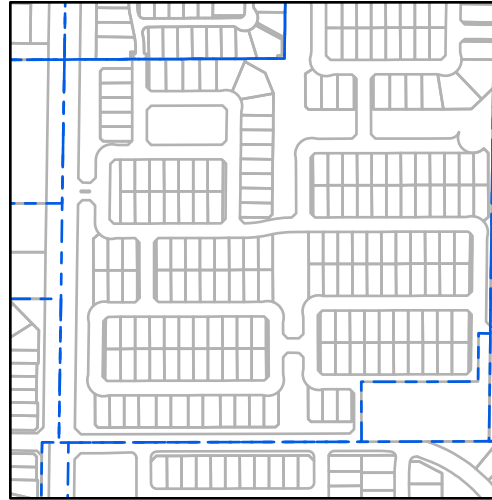
PT. SECTION 35 T01N R02E

850 - 35 - 02 - 03

TOWNSHIP & RANGE SECTION 1/4 SECTION 1/4 SECTION



Parcels updated within this map



MARICOPA COUNTY  
ASSESSOR'S OFFICE  
301 W. Jefferson Street  
Phoenix, AZ 85003  
**MARICOPA COUNTY**  
ASSESSOR'S OFFICE  
<https://mcaassessor.maricopa.gov>

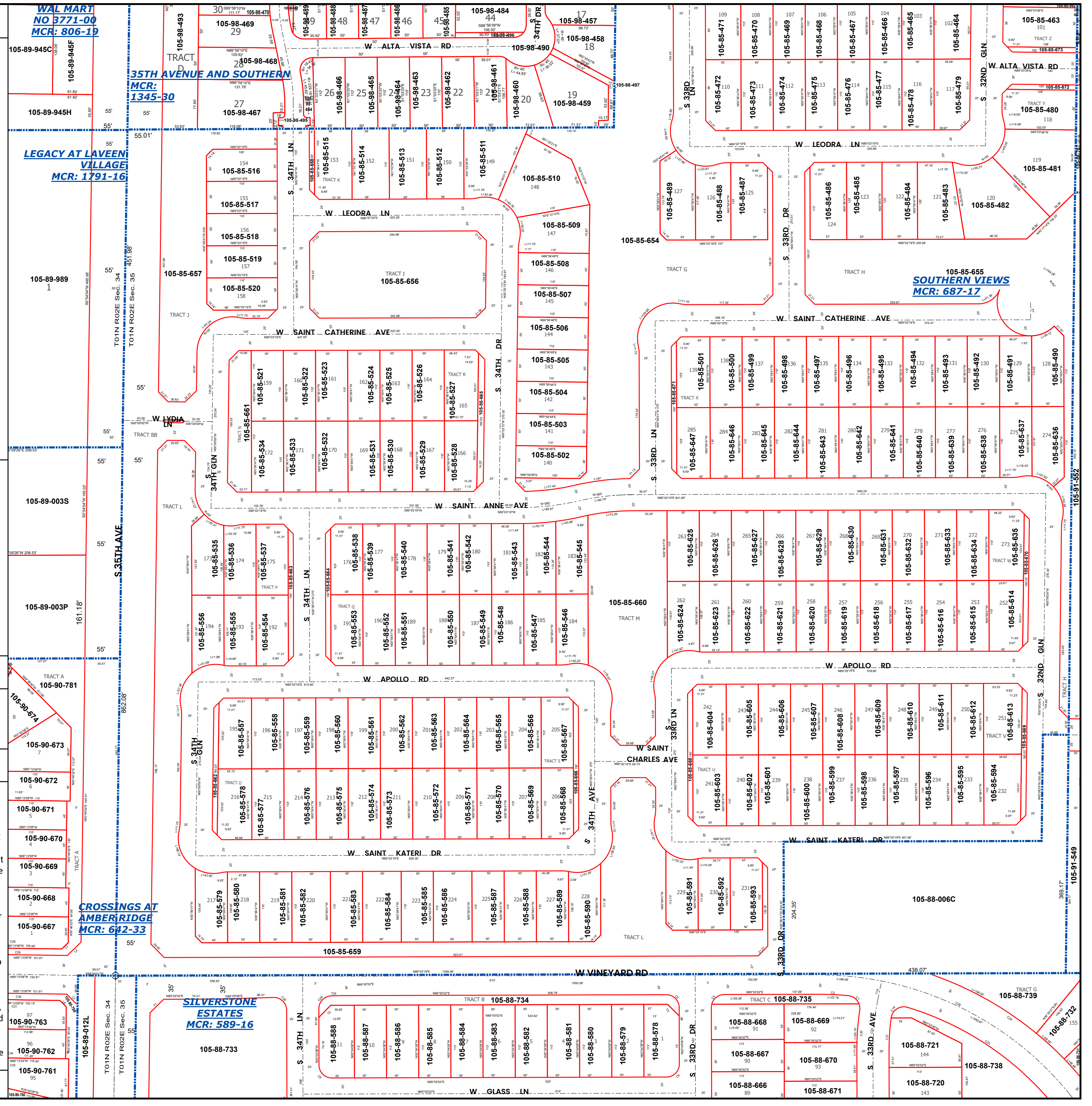
**LEGEND:** Tax Parcels Sections Subdivisions  
Lots Section Corners Centerlines

Disclaimer - Indemnification  
CAUTION! USERS SHOULD INDEPENDENTLY RESEARCH AND VERIFY  
INFORMATION WITHIN THIS DATASET OR MAP BEFORE RELYING ON IT.

The Assessor's Office has compiled information within this dataset or map that it uses to identify, classify, and value real and personal property. Please contact the Assessor's Office at 602 506-3406 if you believe any information is incomplete, out of date, or incorrect so that appropriate corrections can be addressed. Please note that a statutory process is also available to correct errors pursuant to Arizona Revised Statutes 42-16254.

The Assessor does not guarantee that any information contained within this dataset or map is accurate, complete or current. In many instances, the Assessor has gathered information from independent sources and made it available within this dataset or map, and the original information may have contained errors and omissions. Errors and omissions may have occurred in the process of gathering, interpreting, and reporting the information. Information within this dataset or map is not updated "real time." In addition, Users are cautioned that the process used within this dataset or map to illustrate the boundaries of adjacent parcels is not always consistent with the recorded documents for such parcels. The parcel boundaries depicted within this dataset or maps are for illustrative purposes only, and the exact relationship of adjacent parcels should be independently researched and verified. The information provided within this dataset or map is not the equivalent of a title report or a real estate survey. Users should independently research, investigate, and verify all information before relying on it or using it in the preparation of legal documents.

Map Reprint Date: 2/26/2026



**WAL MART**  
NO 3771-09  
MCR: 806-19

**LEGACY AT LAVERN VILLAGE**  
MCR: 1791-16

105-89-989  
1

105-89-003S

105-89-003P

105-90-674

105-90-673

105-90-672

105-90-671

105-90-670

105-90-669

105-90-668

105-90-667

105-90-763  
105-90-762  
105-90-761

105-89-945C  
105-89-945F  
105-89-945H

105-89-989

105-89-003S

105-89-003P

105-90-674

105-90-673

105-90-672

105-90-671

105-90-670

105-90-669

105-90-668

105-90-667

105-90-763  
105-90-762  
105-90-761

105-98-469  
29

105-98-467

105-85-516  
105-85-517  
105-85-518  
105-85-519  
105-85-520

105-85-535  
105-85-536  
105-85-537

105-85-566  
105-85-565  
105-85-564

105-85-574  
105-85-573  
105-85-572  
105-85-571  
105-85-570  
105-85-569  
105-85-568  
105-85-567

105-85-570

105-85-569

105-85-568

105-85-567

105-85-566

105-85-565

105-85-564

105-98-468  
28

105-98-467

105-85-516  
105-85-517  
105-85-518  
105-85-519  
105-85-520

105-85-535  
105-85-536  
105-85-537

105-85-566  
105-85-565  
105-85-564

105-85-574  
105-85-573  
105-85-572  
105-85-571  
105-85-570  
105-85-569  
105-85-568  
105-85-567

105-85-570

105-85-569

105-85-568

105-85-567

105-85-566

105-85-565

105-85-564

105-98-467  
27

105-98-467

105-85-516  
105-85-517  
105-85-518  
105-85-519  
105-85-520

105-85-535  
105-85-536  
105-85-537

105-85-566  
105-85-565  
105-85-564

105-85-574  
105-85-573  
105-85-572  
105-85-571  
105-85-570  
105-85-569  
105-85-568  
105-85-567

105-85-570

105-85-569

105-85-568

105-85-567

105-85-566

105-85-565

105-85-564

105-98-466  
26

105-98-467

105-85-516  
105-85-517  
105-85-518  
105-85-519  
105-85-520

105-85-535  
105-85-536  
105-85-537

105-85-566  
105-85-565  
105-85-564

105-85-574  
105-85-573  
105-85-572  
105-85-571  
105-85-570  
105-85-569  
105-85-568  
105-85-567

105-85-570

105-85-569

105-85-568

105-85-567

105-85-566

105-85-565

105-85-564

105-98-465  
25

105-98-467

105-85-516  
105-85-517  
105-85-518  
105-85-519  
105-85-520

105-85-535  
105-85-536  
105-85-537

105-85-566  
105-85-565  
105-85-564

105-85-574  
105-85-573  
105-85-572  
105-85-571  
105-85-570  
105-85-569  
105-85-568  
105-85-567

105-85-570

105-85-569

105-85-568

105-85-567

105-85-566

105-85-565

105-85-564

105-98-464  
24

105-98-467

105-85-516  
105-85-517  
105-85-518  
105-85-519  
105-85-520

105-85-535  
105-85-536  
105-85-537

105-85-566  
105-85-565  
105-85-564

105-85-574  
105-85-573  
105-85-572  
105-85-571  
105-85-570  
105-85-569  
105-85-568  
105-85-567

105-85-570

105-85-569

105-85-568

105-85-567

105-85-566

105-85-565

105-85-564

105-98-463  
23

105-98-467

105-85-516  
105-85-517  
105-85-518  
105-85-519  
105-85-520

105-85-535  
105-85-536  
105-85-537

105-85-566  
105-85-565  
105-85-564

105-85-574  
105-85-573  
105-85-572  
105-85-571  
105-85-570  
105-85-569  
105-85-568  
105-85-567

105-85-570

105-85-569

105-85-568

105-85-567

105-85-566

105-85-565

105-85-564

105-98-462  
22

105-98-467

105-85-516  
105-85-517  
105-85-518  
105-85-519  
105-85-520

105-85-535  
105-85-536  
105-85-537

105-85-566  
105-85-565  
105-85-564

105-85-574  
105-85-573  
105-85-572  
105-85-571  
105-85-570  
105-85-569  
105-85-568  
105-85-567

105-85-570

105-85-569

105-85-568

105-85-567

105-85-566

105-85-565

105-85-564

105-98-461  
21

105-98-467

105-85-516  
105-85-517  
105-85-518  
105-85-519  
105-85-520

105-85-535  
105-85-536  
105-85-537

105-85-566  
105-85-565  
105-85-564

105-85-574  
105-85-573  
105-85-572  
105-85-571  
105-85-570  
105-85-569  
105-85-568  
105-85-567

105-85-570

105-85-569

105-85-568

105-85-567

105-85-566

105-85-565

105-85-564