

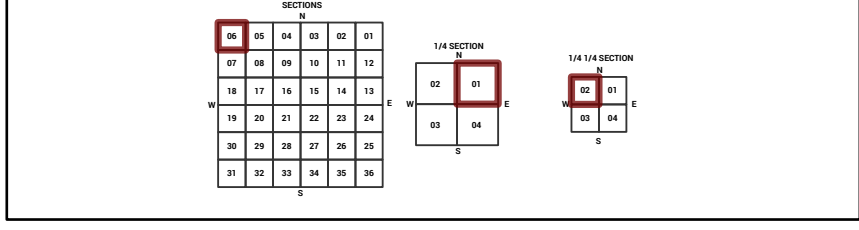
MARICOPA COUNTY

STATE OF ARIZONA

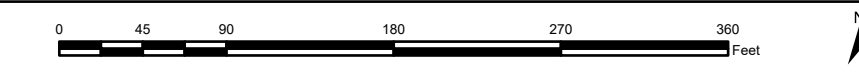
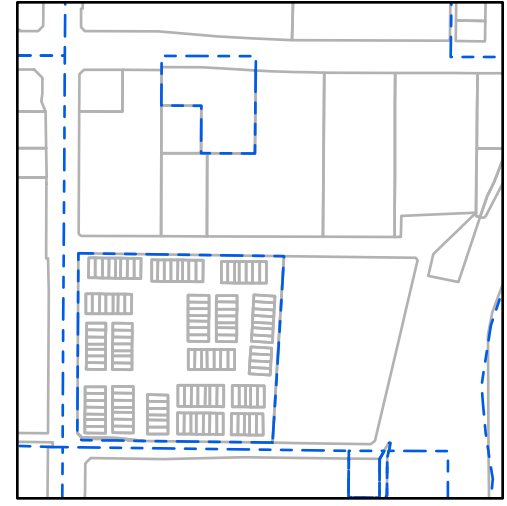
PT. SECTION 6 T01N R04E

852 - 06 - 01 - 02

TOWNSHIP & RANGE SECTION 1/4 SECTION 1/4 1/4 SECTION



Parcels updated within this map



MARICOPA COUNTY ASSESSOR'S OFFICE
301 W. Jefferson Street
Phoenix, AZ 85003

MARICOPA COUNTY
ASSESSOR'S OFFICE
<https://mcaassessor.maricopa.gov>

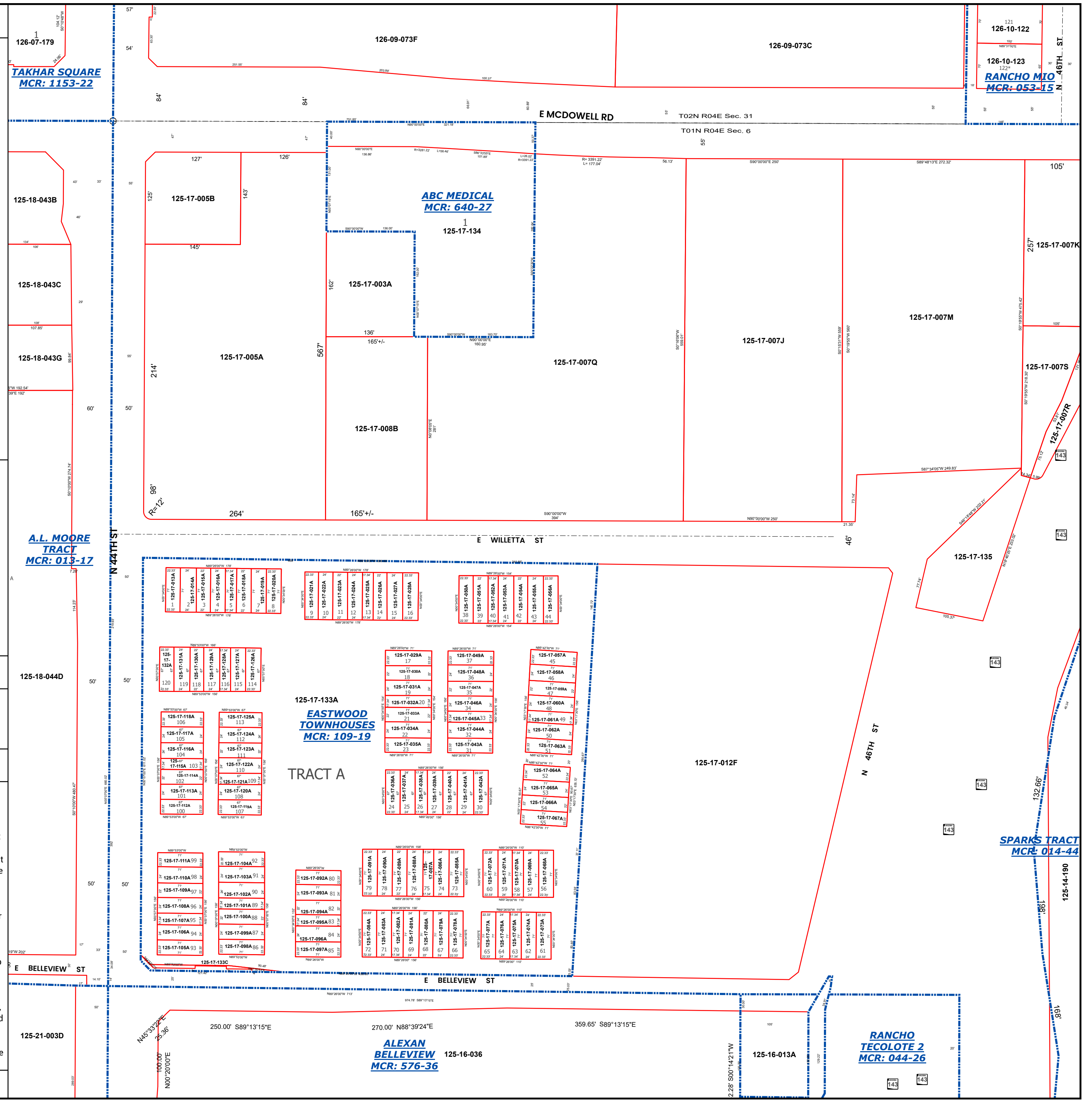
LEGEND: Tax Parcels Sections Subdivisions
Lots Section Corners Centerlines

Disclaimer - Indemnification
CAUTION! USERS SHOULD INDEPENDENTLY RESEARCH AND VERIFY INFORMATION WITHIN THIS DATASET OR MAP BEFORE RELYING ON IT.

The Assessor's Office has compiled information within this dataset or map that it uses to identify, classify, and value real and personal property. Please contact the Assessor's Office at 602 506-3406 if you believe any information is incomplete, out of date, or incorrect so that appropriate corrections can be addressed. Please note that a statutory process is also available to correct errors pursuant to Arizona Revised Statutes 42-16254.

The Assessor does not guarantee that any information contained within this dataset or map is accurate, complete or current. In many instances, the Assessor has gathered information from independent sources and made it available within this dataset or map, and the original information may have contained errors and omissions. Errors and omissions may have occurred in the process of gathering, interpreting, and reporting the information. Information within this dataset or map is not updated "real time." In addition, Users are cautioned that the process used within this dataset or map to illustrate the boundaries of adjacent parcels is not always consistent with the recorded documents for such parcels. The parcel boundaries depicted within this dataset or maps are for illustrative purposes only, and the exact relationship of adjacent parcels should be independently researched and verified. The information provided within this dataset or map is not the equivalent of a title report or a real estate survey. Users should independently research, investigate, and verify all information before relying on it or using it in the preparation of legal documents.

Map Reprint Date: 2/27/2026



121
126-10-122
125
126-10-123
RANCHO MIO
MCR: 053-15

126-07-179
TAKHAR SQUARE
MCR: 1153-22

125-18-043B

125-18-043C

125-18-043G

A.L. MOORE TRACT
MCR: 013-17

125-18-044D

E BELLEVUE ST

125-21-003D

126-09-073F

126-09-073C

E MCDOWELL RD

T02N R04E Sec. 31

T01N R04E Sec. 6

ABC MEDICAL
MCR: 640-27

125-17-134

125-17-003A

125-17-005A

125-17-008B

125-17-007Q

125-17-007J

125-17-007K

125-17-007S

125-17-007R

125-17-135

125-17-133A
EASTWOOD TOWNHOUSES
MCR: 109-19

TRACT A

125-17-012F

SPARKS TRACT
MCR: 014-44

125-14-190

ALEXAN BELLEVUE
MCR: 576-36

125-16-036

RANCHO TECOLOTE 2
MCR: 044-26

125-16-013A