

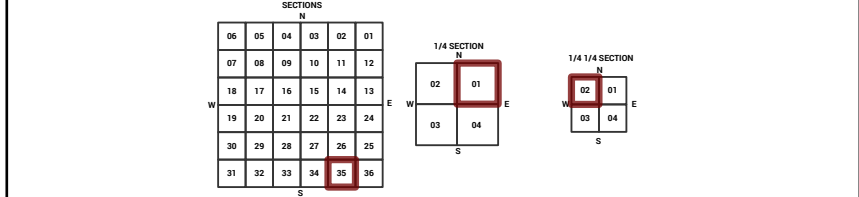
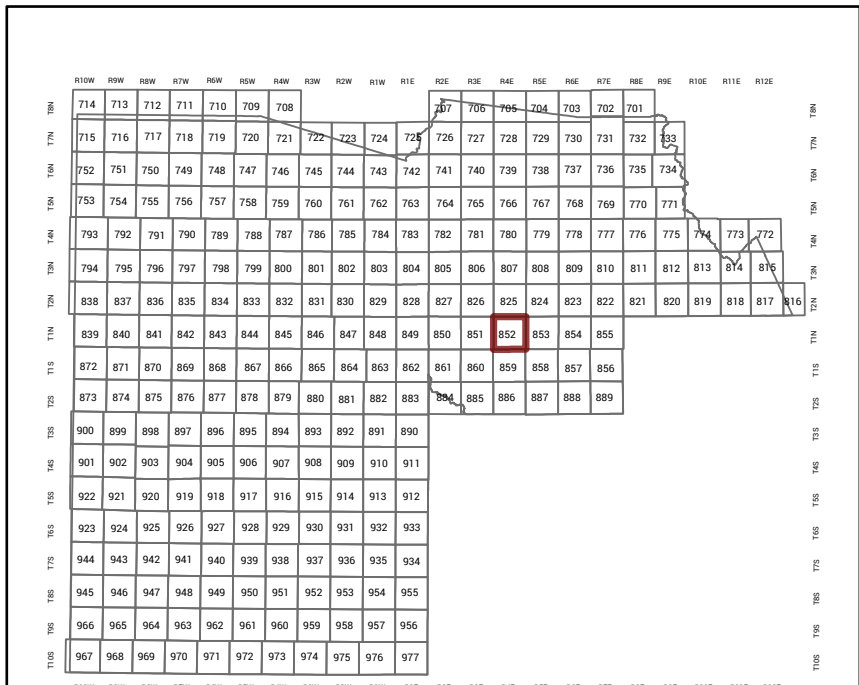
MARICOPA COUNTY

STATE OF ARIZONA

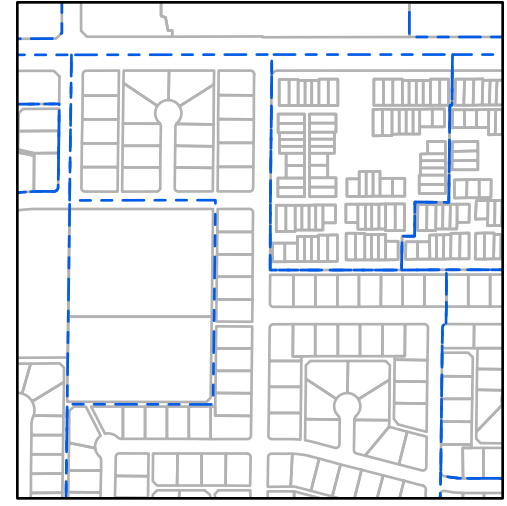
PT. SECTION 35 T01N R04E

852 - 35 - 01 - 02

TOWNSHIP & RANGE SECTION 1/4 SECTION 1/4 1/4 SECTION



Parcels updated within this map



MARICOPA COUNTY ASSESSOR'S OFFICE
301 W. Jefferson Street
Phoenix, AZ 85003

MARICOPA COUNTY
ASSESSOR'S OFFICE
<https://mcaassessor.maricopa.gov>

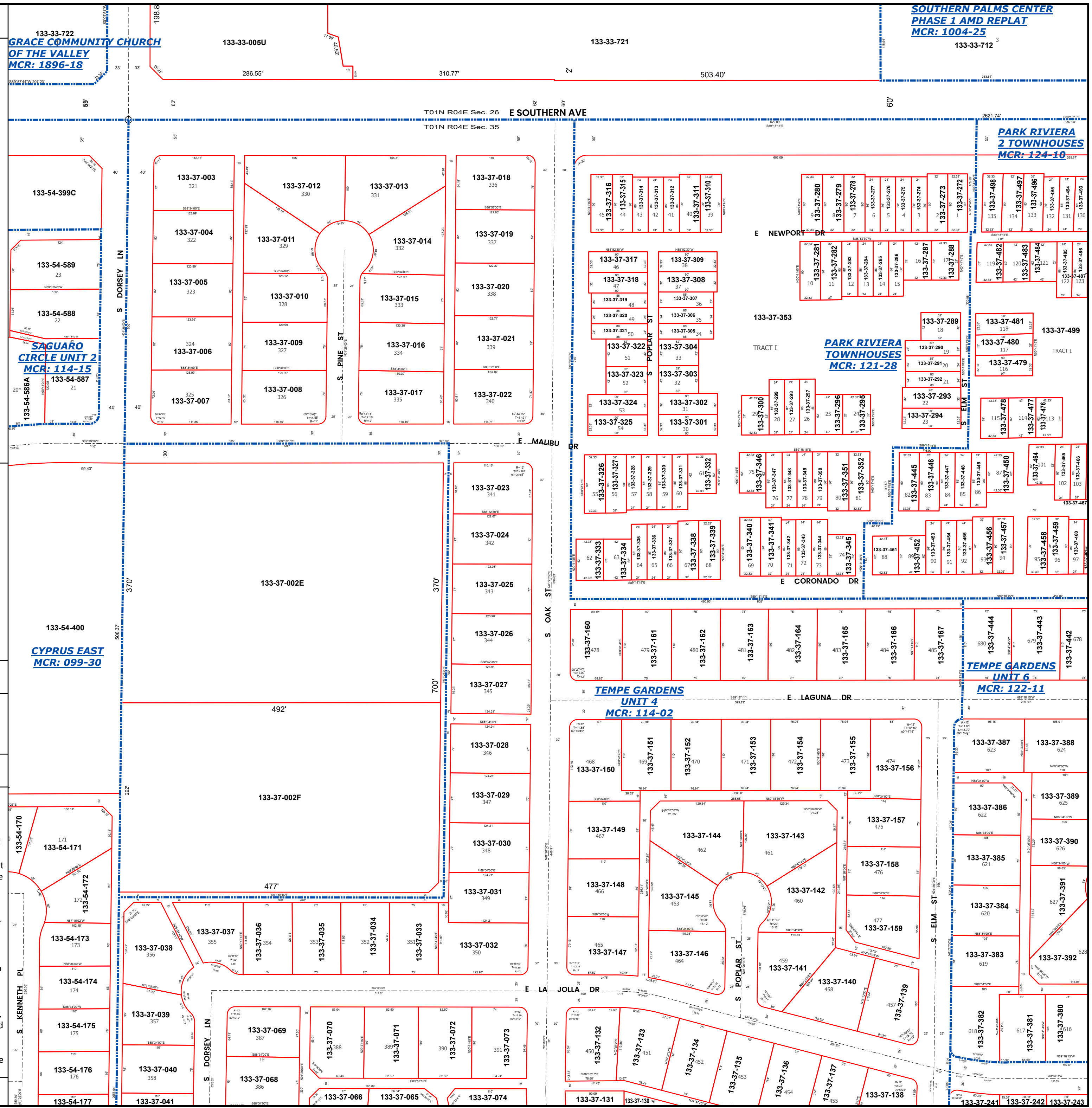
LEGEND: Tax Parcels Sections Subdivisions
Lots Section Corners Centerlines

Disclaimer - Indemnification
CAUTION! USERS SHOULD INDEPENDENTLY RESEARCH AND VERIFY INFORMATION WITHIN THIS DATASET OR MAP BEFORE RELYING ON IT.

The Assessor's Office has compiled information within this dataset or map that it uses to identify, classify, and value real and personal property. Please contact the Assessor's Office at 602 506-3406 if you believe any information is incomplete, out of date, or incorrect so that appropriate corrections can be addressed. Please note that a statutory process is also available to correct errors pursuant to Arizona Revised Statutes 42-16254.

The Assessor does not guarantee that any information contained within this dataset or map is accurate, complete or current. In many instances, the Assessor has gathered information from independent sources and made it available within this dataset or map, and the original information may have contained errors and omissions. Errors and omissions may have occurred in the process of gathering, interpreting, and reporting the information. Information within this dataset or map is not updated "real time." In addition, Users are cautioned that the process used within this dataset or map to illustrate the boundaries of adjacent parcels is not always consistent with the recorded documents for such parcels. The parcel boundaries depicted within this dataset or maps are for illustrative purposes only, and the exact relationship of adjacent parcels should be independently researched and verified. The information provided within this dataset or map is not the equivalent of a title report or a real estate survey. Users should independently research, investigate, and verify all information before relying on it or using it in the preparation of legal documents.

Map Reprint Date: 2/27/2026



133-33-722
GRACE COMMUNITY CHURCH OF THE VALLEY
MCR: 1896-18

133-54-399C

133-54-589

133-54-588

SAGUARO CIRCLE UNIT 2
MCR: 114-15

133-54-586A

133-54-400

CYPRUS EAST
MCR: 099-30

133-54-170

133-54-171

133-54-172

133-54-173

133-54-174

133-54-175

133-33-005U

133-37-003

133-37-004

133-37-005

133-37-006

133-37-007

133-37-012

133-37-011

133-37-010

133-37-009

133-37-008

133-37-023

133-37-024

133-37-025

133-37-026

133-37-027

133-37-028

133-37-029

133-37-030

133-37-031

133-37-032

133-37-033

133-37-034

133-37-013

133-37-014

133-37-015

133-37-016

133-37-017

133-37-023

133-37-024

133-37-025

133-37-026

133-37-027

133-37-028

133-37-029

133-37-030

133-37-031

133-37-032

133-37-033

133-37-034

133-37-018

133-37-019

133-37-020

133-37-021

133-37-022

133-37-023

133-37-024

133-37-025

133-37-026

133-37-027

133-37-028

133-37-029

133-37-030

133-37-031

133-37-032

133-37-033

133-37-034

133-37-210

133-37-211

133-37-212

133-37-213

133-37-214

133-37-215

133-37-216

133-37-217

133-37-218

133-37-219

133-37-220

133-37-221

133-37-222

133-37-223

133-37-224

133-37-225

133-37-226

SOUTHERN PALMS CENTER
PHASE 1 AMD REPLAT
MCR: 1004-25

133-37-280

133-37-281

133-37-282

133-37-283

133-37-284

133-37-285

133-37-286

133-37-287

133-37-288

133-37-289

133-37-290

133-37-291

133-37-292

133-37-293

133-37-294

133-37-295

133-37-296

133-33-712

133-37-486

133-37-487

133-37-488

133-37-489

133-37-490

133-37-491

133-37-492

133-37-493

133-37-494

133-37-495

133-37-496

133-37-497

133-37-498

133-37-499

133-37-499

133-37-499

133-37-499

PARK RIVIERA 2 TOWNHOUSES
MCR: 124-16

PARK RIVIERA TOWNHOUSES
MCR: 121-28

TEMPE GARDENS UNIT 6
MCR: 122-11

TEMPE GARDENS UNIT 4
MCR: 114-02