

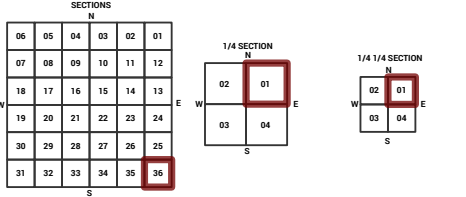
MARICOPA COUNTY
STATE OF ARIZONA

PT. SECTION 36 T01N R04E

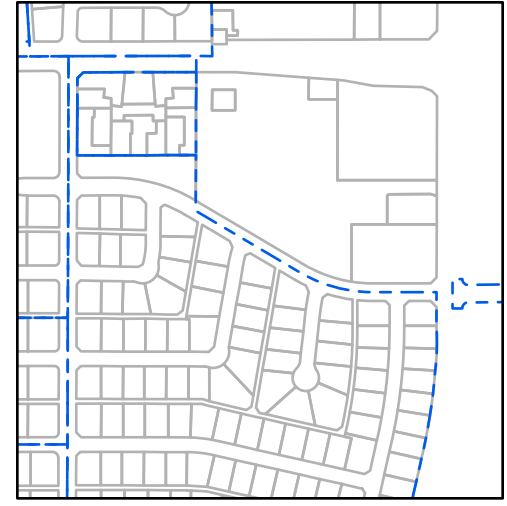
852 - 36 - 01 - 01

TOWNSHIP & RANGE SECTION 1/4 SECTION 1/4 1/4 SECTION

714	713	712	711	710	709	708	707	706	705	704	703	702	701
715	716	717	718	719	720	721	722	723	724	725	726	727	728
752	751	750	749	748	747	746	745	744	743	742	741	740	739
753	754	755	756	757	758	759	760	761	762	763	764	765	766
793	792	791	790	789	788	787	786	785	784	783	782	781	780
794	795	796	797	798	799	800	801	802	803	804	805	806	807
838	837	836	835	834	833	832	831	830	829	828	827	826	825
839	840	841	842	843	844	845	846	847	848	849	850	851	852
872	871	870	869	868	867	866	865	864	863	862	861	860	859
873	874	875	876	877	878	879	880	881	882	883	884	885	886
900	899	898	897	896	895	894	893	892	891	890	889	888	887
901	902	903	904	905	906	907	908	909	910	911	912	913	914
922	921	920	919	918	917	916	915	914	913	912	911	910	909
923	924	925	926	927	928	929	930	931	932	933	934	935	936
944	943	942	941	940	939	938	937	936	935	934	933	932	931
945	946	947	948	949	950	951	952	953	954	955	956	957	958
964	965	966	967	968	969	970	971	972	973	974	975	976	977
965	966	967	968	969	970	971	972	973	974	975	976	977	978



Parcels updated within this map



MARICOPA COUNTY
ASSESSOR'S OFFICE
301 W. Jefferson Street
Phoenix, AZ 85003

MARICOPA COUNTY
ASSESSOR'S OFFICE
<https://mcaassessor.maricopa.gov>

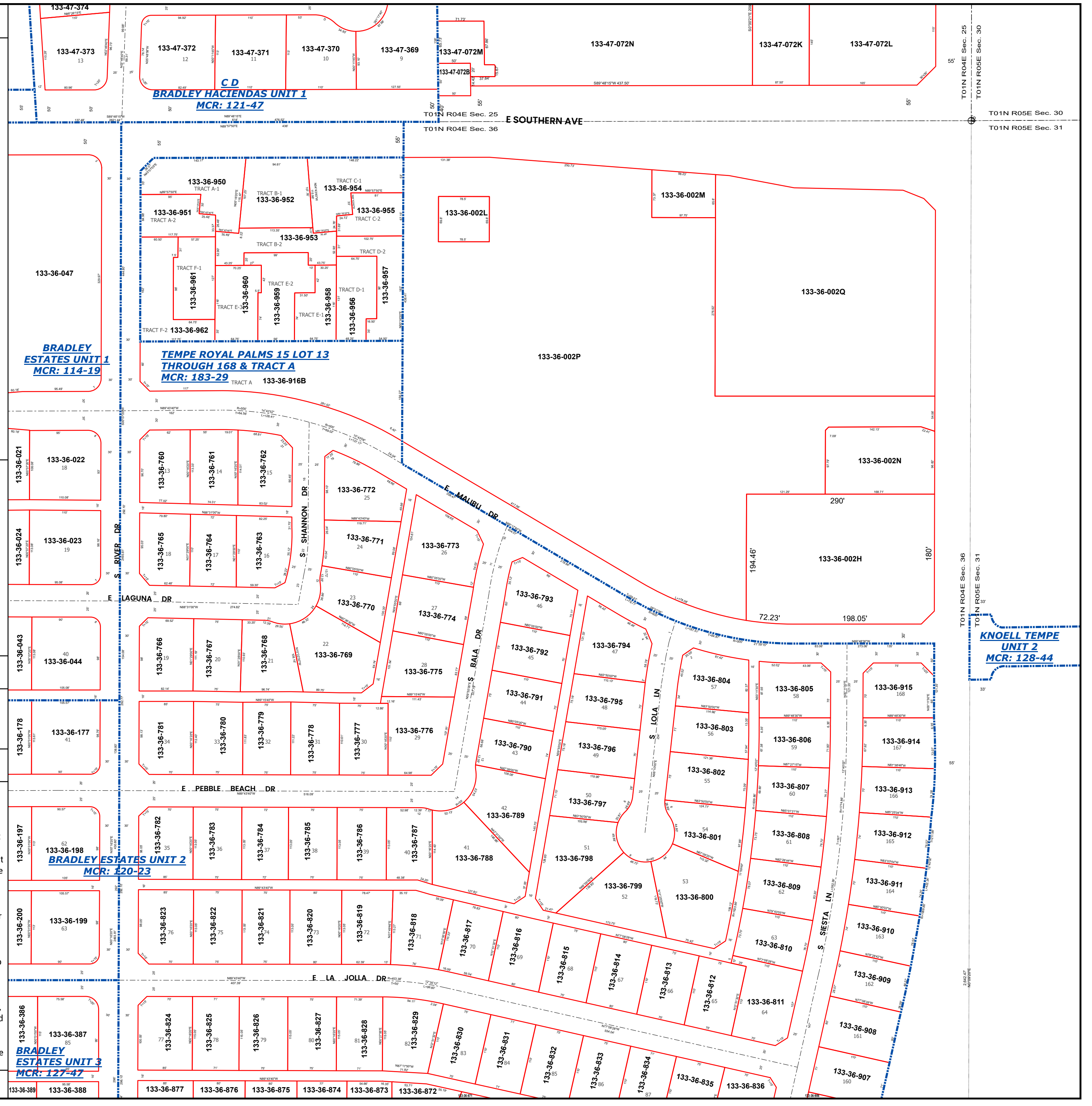
LEGEND: Tax Parcels (red outline), Sections (dashed blue outline), Subdivisions (dotted blue outline), Lots (thin red outline), Section Corners (circle with cross), Centerlines (dashed line)

Disclaimer - Indemnification
CAUTION! USERS SHOULD INDEPENDENTLY RESEARCH AND VERIFY INFORMATION WITHIN THIS DATASET OR MAP BEFORE RELYING ON IT.

The Assessor's Office has compiled information within this dataset or map that it uses to identify, classify, and value real and personal property. Please contact the Assessor's Office at 602 506-3406 if you believe any information is incomplete, out of date, or incorrect so that appropriate corrections can be addressed. Please note that a statutory process is also available to correct errors pursuant to Arizona Revised Statutes 42-16254.

The Assessor does not guarantee that any information contained within this dataset or map is accurate, complete or current. In many instances, the Assessor has gathered information from independent sources and made it available within this dataset or map, and the original information may have contained errors and omissions. Errors and omissions may have occurred in the process of gathering, interpreting, and reporting the information. Information within this dataset or map is not updated "real time." In addition, Users are cautioned that the process used within this dataset or map to illustrate the boundaries of adjacent parcels is not always consistent with the recorded documents for such parcels. The parcel boundaries depicted within this dataset or maps are for illustrative purposes only, and the exact relationship of adjacent parcels should be independently researched and verified. The information provided within this dataset or map is not the equivalent of a title report or a real estate survey. Users should independently research, investigate, and verify all information before relying on it or using it in the preparation of legal documents.

Map Reprint Date: 2/27/2026



T01N R04E Sec. 25
T01N R04E Sec. 36
T01N R05E Sec. 30
T01N R05E Sec. 31

T01N R04E Sec. 36
T01N R05E Sec. 31
KNOELL TEMPE UNIT 2
MCR: 128-44

133-36-389 133-36-388 133-36-877 133-36-876 133-36-875 133-36-874 133-36-873 133-36-872 133-36-871 133-36-870 133-36-869 133-36-868 133-36-867 133-36-866 133-36-865 133-36-864 133-36-863 133-36-862 133-36-861 133-36-860 133-36-859 133-36-858 133-36-857 133-36-856 133-36-855 133-36-854 133-36-853 133-36-852 133-36-851 133-36-850 133-36-849 133-36-848 133-36-847 133-36-846 133-36-845 133-36-844 133-36-843 133-36-842 133-36-841 133-36-840 133-36-839 133-36-838 133-36-837 133-36-836 133-36-835 133-36-834 133-36-833 133-36-832 133-36-831 133-36-830 133-36-829 133-36-828 133-36-827 133-36-826 133-36-825 133-36-824 133-36-823 133-36-822 133-36-821 133-36-820 133-36-819 133-36-818 133-36-817 133-36-816 133-36-815 133-36-814 133-36-813 133-36-812 133-36-811 133-36-810 133-36-809 133-36-808 133-36-807 133-36-806 133-36-805 133-36-804 133-36-803 133-36-802 133-36-801 133-36-800 133-36-799 133-36-798 133-36-797 133-36-796 133-36-795 133-36-794 133-36-793 133-36-792 133-36-791 133-36-790 133-36-789 133-36-788 133-36-787 133-36-786 133-36-785 133-36-784 133-36-783 133-36-782 133-36-781 133-36-780 133-36-779 133-36-778 133-36-777 133-36-776 133-36-775 133-36-774 133-36-773 133-36-772 133-36-771 133-36-770 133-36-769 133-36-768 133-36-767 133-36-766 133-36-765 133-36-764 133-36-763 133-36-762 133-36-761 133-36-760 133-36-021 133-36-022 133-36-023 133-36-024 133-36-043 133-36-044 133-36-178 133-36-177 133-36-197 133-36-198 133-36-200 133-36-199 133-36-386 133-36-387 133-36-388 133-36-950 133-36-951 133-36-952 133-36-953 133-36-954 133-36-955 133-36-956 133-36-957 133-36-958 133-36-959 133-36-960 133-36-961 133-36-962 133-36-963 133-36-964 133-36-965 133-36-966 133-36-967 133-36-968 133-36-969 133-36-970 133-36-971 133-36-972 133-36-973 133-36-974 133-36-975 133-36-976 133-36-977 133-36-002L 133-36-002M 133-36-002N 133-36-002H 133-36-002P 133-36-002Q