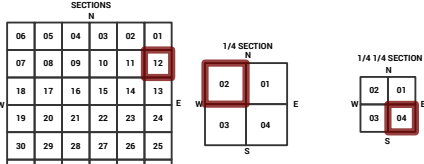
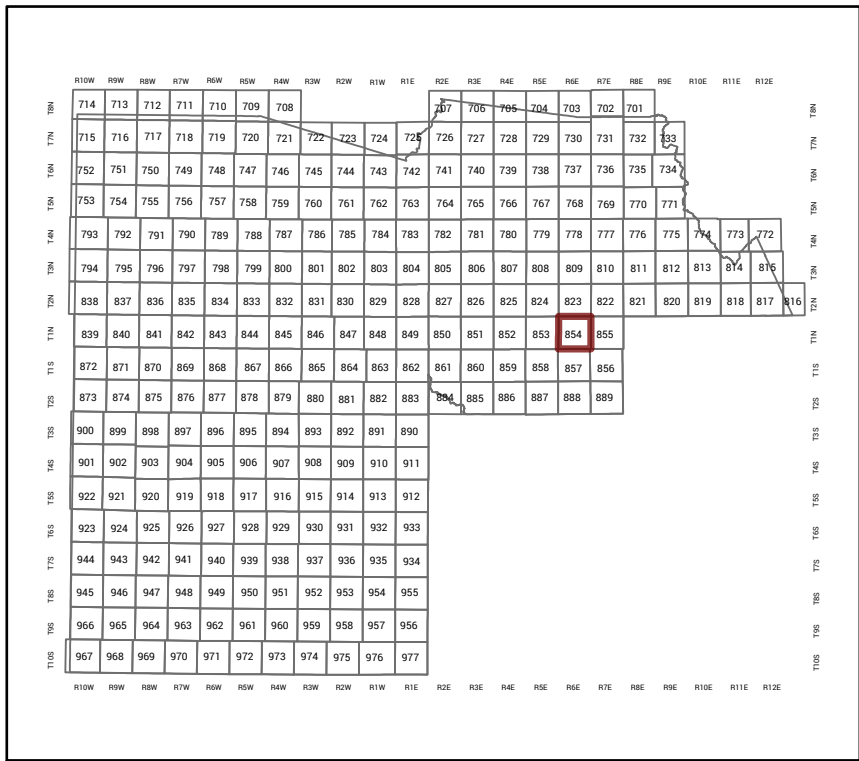


MARICOPA COUNTY  
STATE OF ARIZONA

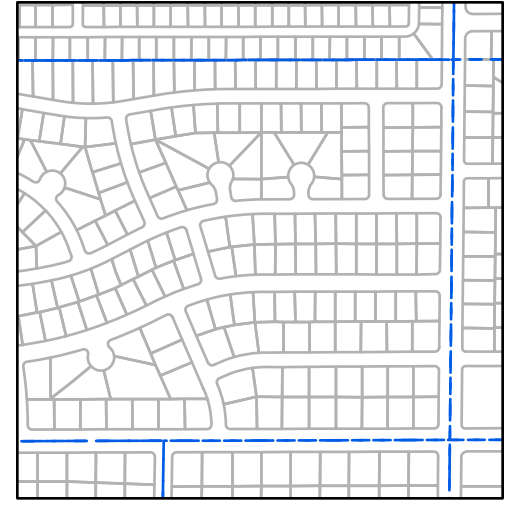
PT. SECTION 12 T01N R06E

854 - 12 - 02 - 04

TOWNSHIP & RANGE SECTION 1/4 SECTION 1/4 1/4 SECTION



Parcels updated within this map



MARICOPA COUNTY  
ASSESSOR'S OFFICE  
301 W. Jefferson Street  
Phoenix, AZ 85003  
<https://mccassessor.maricopa.gov>

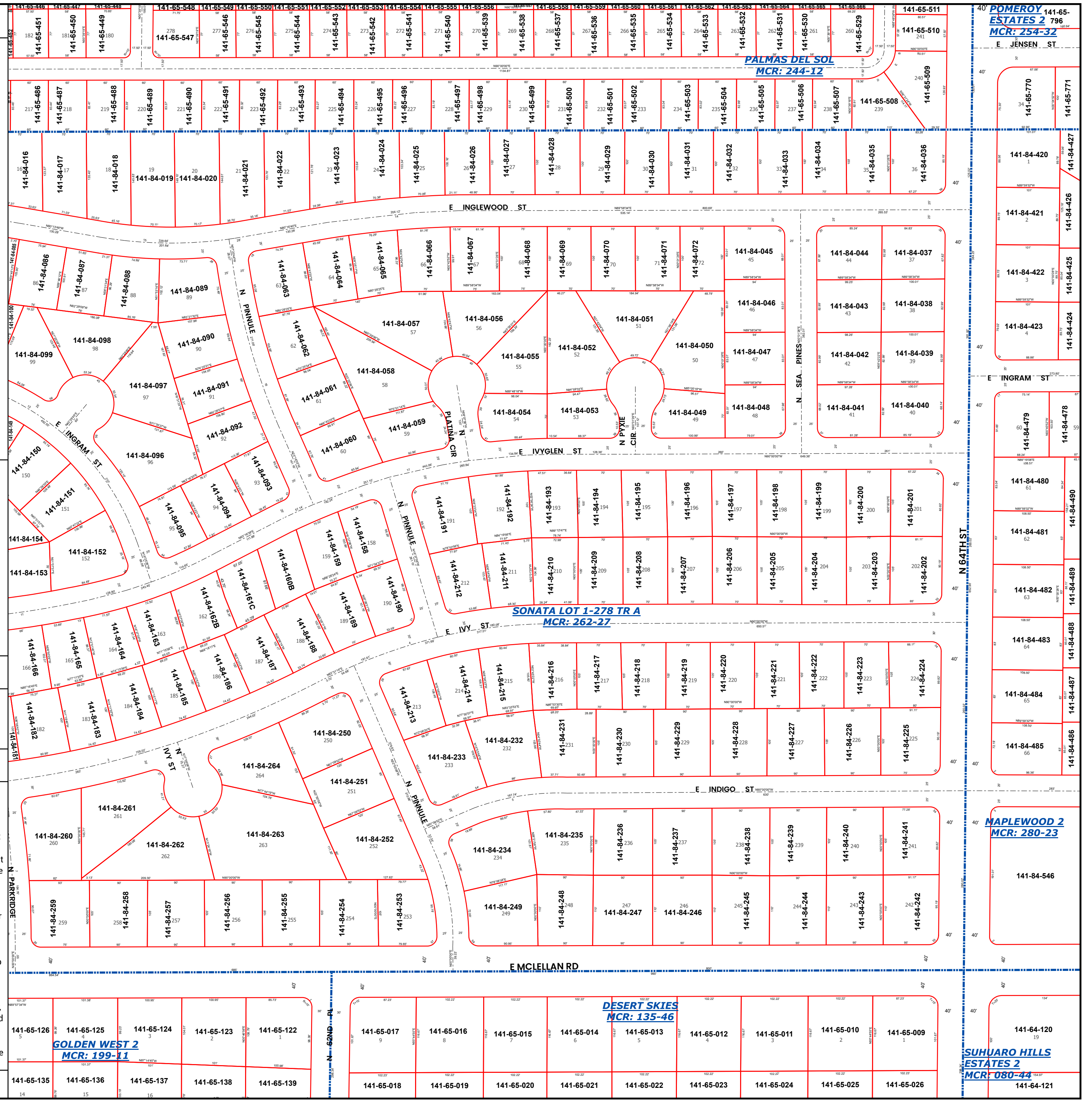
LEGEND: Tax Parcels, Sections, Subdivisions, Lots, Section Corners, Centerlines

Disclaimer - Indemnification  
CAUTION! USERS SHOULD INDEPENDENTLY RESEARCH AND VERIFY INFORMATION WITHIN THIS DATASET OR MAP BEFORE RELYING ON IT.

The Assessor's Office has compiled information within this dataset or map that it uses to identify, classify, and value real and personal property. Please contact the Assessor's Office at 602 506-3406 if you believe any information is incomplete, out of date, or incorrect so that appropriate corrections can be addressed. Please note that a statutory process is also available to correct errors pursuant to Arizona Revised Statutes 42-16254.

The Assessor does not guarantee that any information contained within this dataset or map is accurate, complete or current. In many instances, the Assessor has gathered information from independent sources and made it available within this dataset or map, and the original information may have contained errors and omissions. Errors and omissions may have occurred in the process of gathering, interpreting, and reporting the information. Information within this dataset or map is not updated "real time." In addition, Users are cautioned that the process used within this dataset or map to illustrate the boundaries of adjacent parcels is not always consistent with the recorded documents for such parcels. The parcel boundaries depicted within this dataset or maps are for illustrative purposes only, and the exact relationship of adjacent parcels should be independently researched and verified. The information provided within this dataset or map is not the equivalent of a title report or a real estate survey. Users should independently research, investigate, and verify all information before relying on it or using it in the preparation of legal documents.

Map Reprint Date: 2/27/2026



141-65-511  
141-65-510  
141-65-509  
141-65-508  
141-84-420  
141-84-421  
141-84-422  
141-84-423  
141-84-424  
141-84-425  
141-84-426  
141-84-427  
141-84-428  
141-84-429  
141-84-430  
141-84-431  
141-84-432  
141-84-433  
141-84-434  
141-84-435  
141-84-436  
141-84-437  
141-84-438  
141-84-439  
141-84-440  
141-84-441  
141-84-442  
141-84-443  
141-84-444  
141-84-445  
141-84-446  
141-84-447  
141-84-448  
141-84-449  
141-84-450  
141-84-451  
141-84-452  
141-84-453  
141-84-454  
141-84-455  
141-84-456  
141-84-457  
141-84-458  
141-84-459  
141-84-460  
141-84-461  
141-84-462  
141-84-463  
141-84-464  
141-84-465  
141-84-466  
141-84-467  
141-84-468  
141-84-469  
141-84-470  
141-84-471  
141-84-472  
141-84-473  
141-84-474  
141-84-475  
141-84-476  
141-84-477  
141-84-478  
141-84-479  
141-84-480  
141-84-481  
141-84-482  
141-84-483  
141-84-484  
141-84-485  
141-84-486  
141-84-487  
141-84-488  
141-84-489  
141-84-490  
141-84-491  
141-84-492  
141-84-493  
141-84-494  
141-84-495  
141-84-496  
141-84-497  
141-84-498  
141-84-499  
141-84-500  
141-84-501  
141-84-502  
141-84-503  
141-84-504  
141-84-505  
141-84-506  
141-84-507  
141-84-508  
141-84-509  
141-84-510  
141-84-511

POMEROY ESTATES 2 MCR: 254-32  
JENSEN ST  
PALMAS DEL SOL MCR: 244-12  
INGRAM ST  
INGRAM ST  
IVYGLEN ST  
SONATA LOT 1-278 TR A MCR: 262-27  
INDIGO ST  
MCLELLAN RD  
DESERT SKIES MCR: 135-46  
GOLDEN WEST 2 MCR: 199-11  
SUHUARO HILLS ESTATES 2 MCR: 080-44

141-64-120  
141-64-121