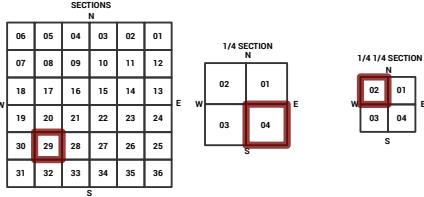
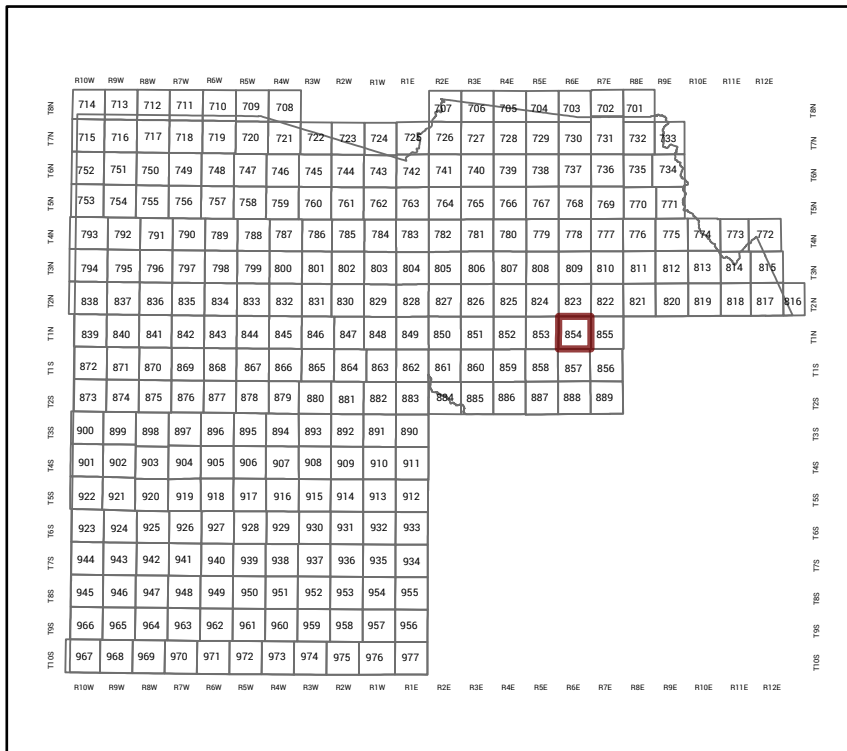


MARICOPA COUNTY
STATE OF ARIZONA

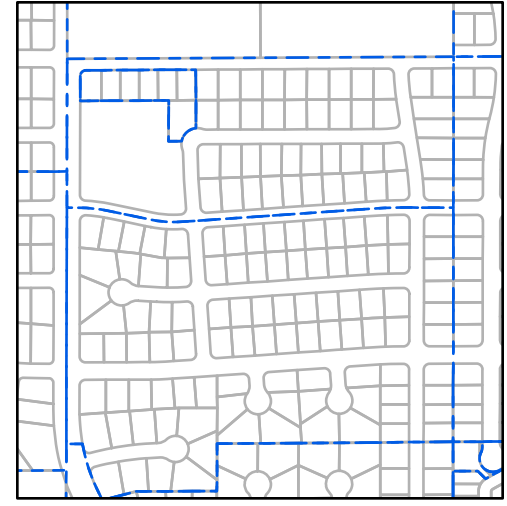
PT. SECTION 29 T01N R06E

854 - 29 - 04 - 02

TOWNSHIP & RANGE SECTION 1/4 SECTION 1/4 1/4 SECTION



Parcels updated within this map



MARICOPA COUNTY
ASSESSOR'S OFFICE
301 W. Jefferson Street
Phoenix, AZ 85003
MARICOPA COUNTY
ASSESSOR'S OFFICE
<https://mcassessor.maricopa.gov>

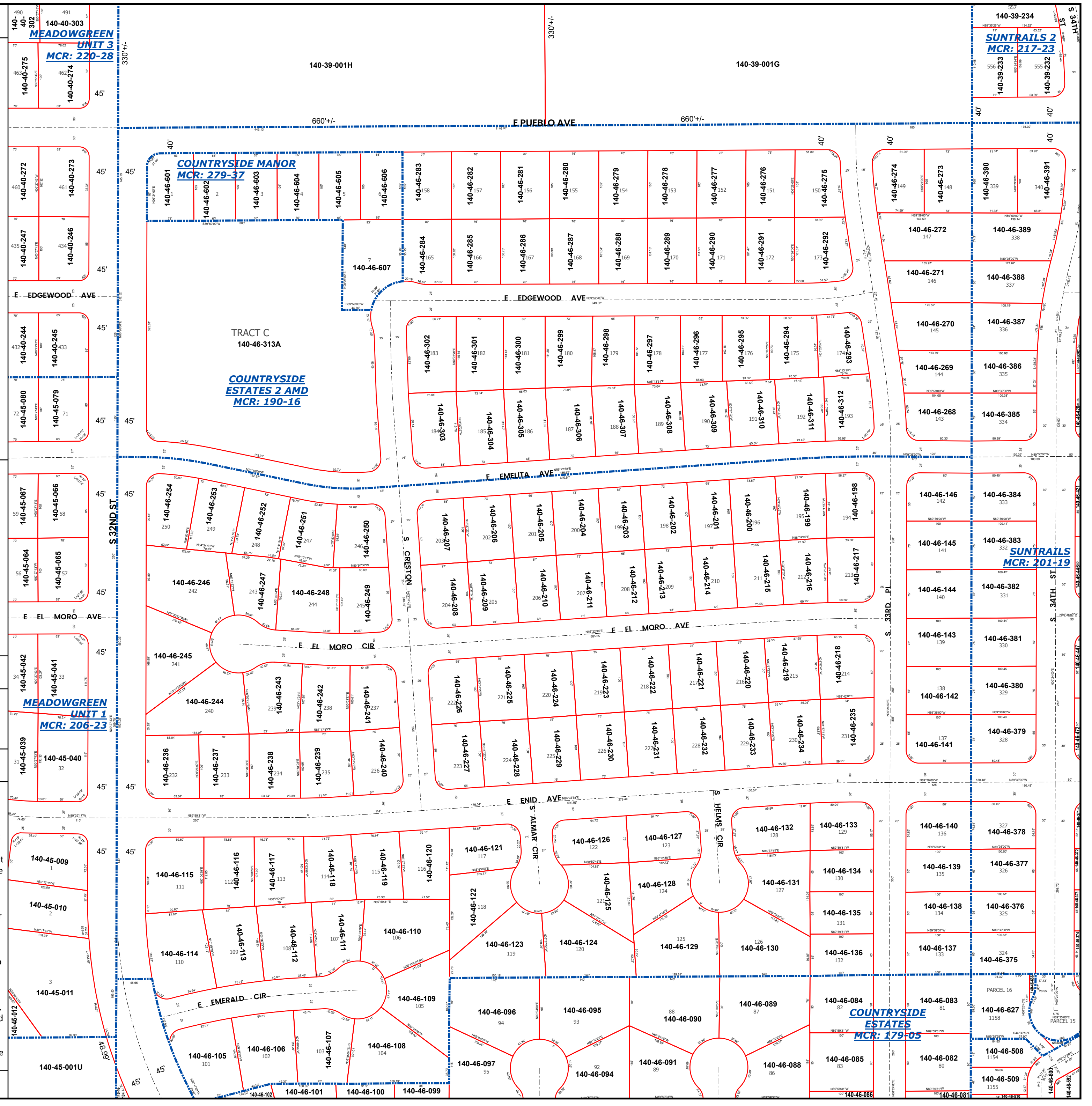
LEGEND: Tax Parcels Sections Subdivisions
Lots Section Corners Centerlines

Disclaimer - Indemnification
CAUTION! USERS SHOULD INDEPENDENTLY RESEARCH AND VERIFY
INFORMATION WITHIN THIS DATASET OR MAP BEFORE RELYING ON IT.

The Assessor's Office has compiled information within this dataset or map that it uses to identify, classify, and value real and personal property. Please contact the Assessor's Office at 602 506-3406 if you believe any information is incomplete, out of date, or incorrect so that appropriate corrections can be addressed. Please note that a statutory process is also available to correct errors pursuant to Arizona Revised Statutes 42-16254.

The Assessor does not guarantee that any information contained within this dataset or map is accurate, complete or current. In many instances, the Assessor has gathered information from independent sources and made it available within this dataset or map, and the original information may have contained errors and omissions. Errors and omissions may have occurred in the process of gathering, interpreting, and reporting the information. Information within this dataset or map is not updated "real time." In addition, Users are cautioned that the process used within this dataset or map to illustrate the boundaries of adjacent parcels is not always consistent with the recorded documents for such parcels. The parcel boundaries depicted within this dataset or maps are for illustrative purposes only, and the exact relationship of adjacent parcels should be independently researched and verified. The information provided within this dataset or map is not the equivalent of a title report or a real estate survey. Users should independently research, investigate, and verify all information before relying on it or using it in the preparation of legal documents.

Map Reprint Date: 2/27/2026



MEADOWGREEN UNIT 3
MCR: 220-28

140-40-272
140-40-273
140-40-247
140-40-246
140-40-244
140-40-245
140-45-080
140-45-079

140-45-087
140-45-066
140-45-064
140-45-065

140-45-042
140-45-043
140-45-044
140-45-045

MEADOWGREEN UNIT 1
MCR: 206-23

140-45-009
140-45-010
140-45-011
140-45-010U

COUNTRYSIDE MANOR
MCR: 279-37

140-46-601
140-46-602
140-46-603
140-46-604
140-46-605
140-46-606
140-46-283
140-46-282
140-46-281
140-46-280
140-46-279
140-46-278
140-46-277
140-46-276
140-46-275

TRACT C
140-46-313A

COUNTRYSIDE ESTATES 2 AMD
MCR: 190-16

140-46-302
140-46-301
140-46-300
140-46-299
140-46-298
140-46-297
140-46-303
140-46-304
140-46-305
140-46-306
140-46-307
140-46-308
140-46-309
140-46-310
140-46-311
140-46-312
140-46-313

140-46-254
140-46-253
140-46-252
140-46-251
140-46-250
140-46-246
140-46-247
140-46-248
140-46-249
140-46-245
140-46-244
140-46-243
140-46-242
140-46-241
140-46-240
140-46-239
140-46-238
140-46-237
140-46-236
140-46-235
140-46-234
140-46-233
140-46-232
140-46-231
140-46-230
140-46-229
140-46-228
140-46-227
140-46-226
140-46-225
140-46-224
140-46-223
140-46-222
140-46-221
140-46-220
140-46-219
140-46-218
140-46-217
140-46-216
140-46-215
140-46-214
140-46-213
140-46-212
140-46-211
140-46-210
140-46-209
140-46-208
140-46-207
140-46-206
140-46-205
140-46-204
140-46-203
140-46-202
140-46-201
140-46-200
140-46-199
140-46-198
140-46-197
140-46-196
140-46-195
140-46-194
140-46-193
140-46-192
140-46-191
140-46-190
140-46-189
140-46-188
140-46-187
140-46-186
140-46-185
140-46-184
140-46-183
140-46-182
140-46-181
140-46-180
140-46-179
140-46-178
140-46-177
140-46-176
140-46-175
140-46-174
140-46-173
140-46-172
140-46-171
140-46-170
140-46-169
140-46-168
140-46-167
140-46-166
140-46-165
140-46-164
140-46-163
140-46-162
140-46-161
140-46-160
140-46-159
140-46-158
140-46-157
140-46-156
140-46-155
140-46-154
140-46-153
140-46-152
140-46-151
140-46-150
140-46-149
140-46-148
140-46-147
140-46-146
140-46-145
140-46-144
140-46-143
140-46-142
140-46-141
140-46-140
140-46-139
140-46-138
140-46-137
140-46-136
140-46-135
140-46-134
140-46-133
140-46-132
140-46-131
140-46-130
140-46-129
140-46-128
140-46-127
140-46-126
140-46-125
140-46-124
140-46-123
140-46-122
140-46-121
140-46-120
140-46-119
140-46-118
140-46-117
140-46-116
140-46-115
140-46-114
140-46-113
140-46-112
140-46-111
140-46-110
140-46-109
140-46-108
140-46-107
140-46-106
140-46-105
140-46-104
140-46-103
140-46-102
140-46-101
140-46-100
140-46-099
140-46-098
140-46-097
140-46-096
140-46-095
140-46-094
140-46-093
140-46-092
140-46-091
140-46-090
140-46-089
140-46-088
140-46-087
140-46-086
140-46-085
140-46-084
140-46-083
140-46-082
140-46-081
140-46-080
140-46-079
140-46-078
140-46-077
140-46-076
140-46-075
140-46-074
140-46-073
140-46-072
140-46-071
140-46-070
140-46-069
140-46-068
140-46-067
140-46-066
140-46-065
140-46-064
140-46-063
140-46-062
140-46-061

140-39-001H
140-39-001G

E PUEBLO AVE
E EDGWOOD AVE
E EMELITA AVE
E EL MORO AVE
E EL MORO CIR
E ENID AVE
E EMERALD CIR

S 32ND ST
S 33RD ST
S 34TH ST

COUNTRYSIDE ESTATES 2
MCR: 217-23

SUNTRAILS 2
MCR: 201-19

COUNTRYSIDE ESTATES
MCR: 179-05