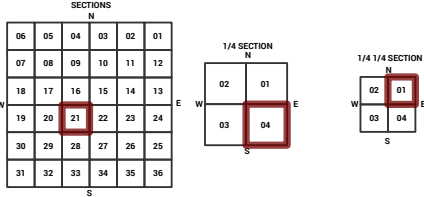
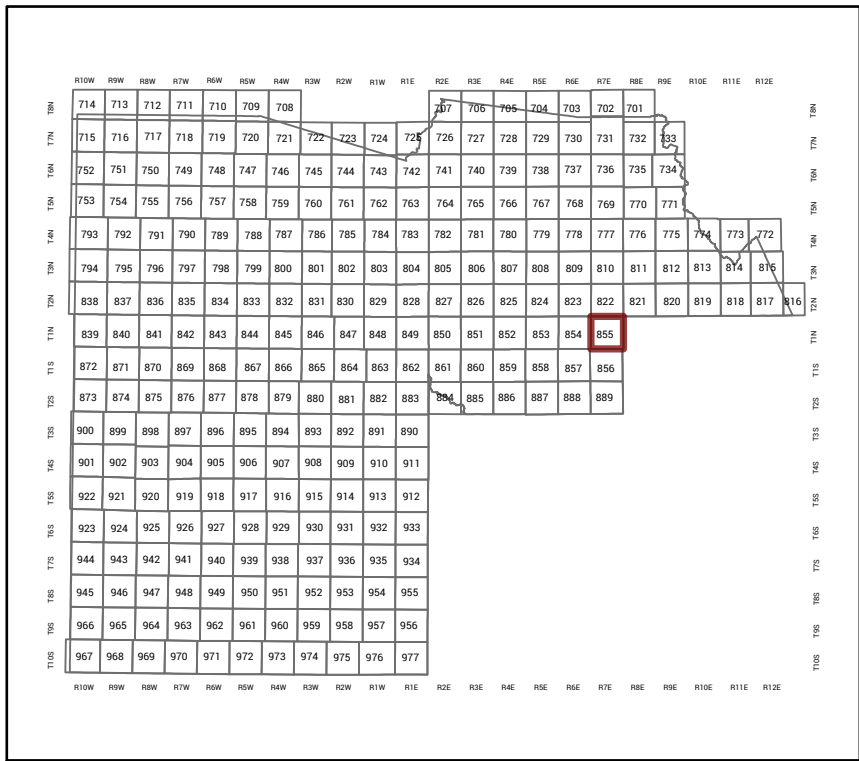


MARICOPA COUNTY  
STATE OF ARIZONA

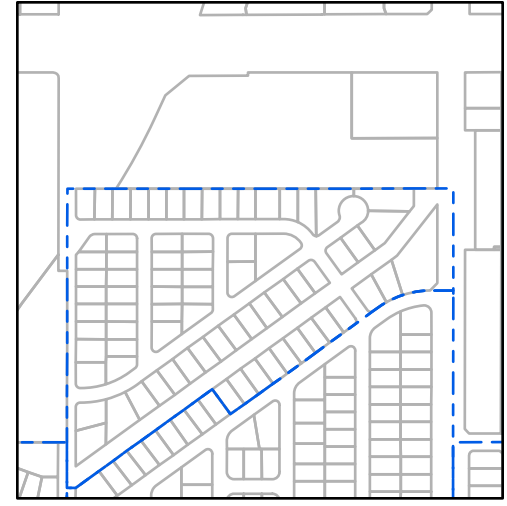
PT. SECTION 21 T01N R07E

855 - 21 - 04 - 01

TOWNSHIP & RANGE SECTION 1/4 SECTION 1/4 1/4 SECTION



Parcels updated within this map



MARICOPA COUNTY  
ASSESSOR'S OFFICE  
301 W. Jefferson Street  
Phoenix, AZ 85003



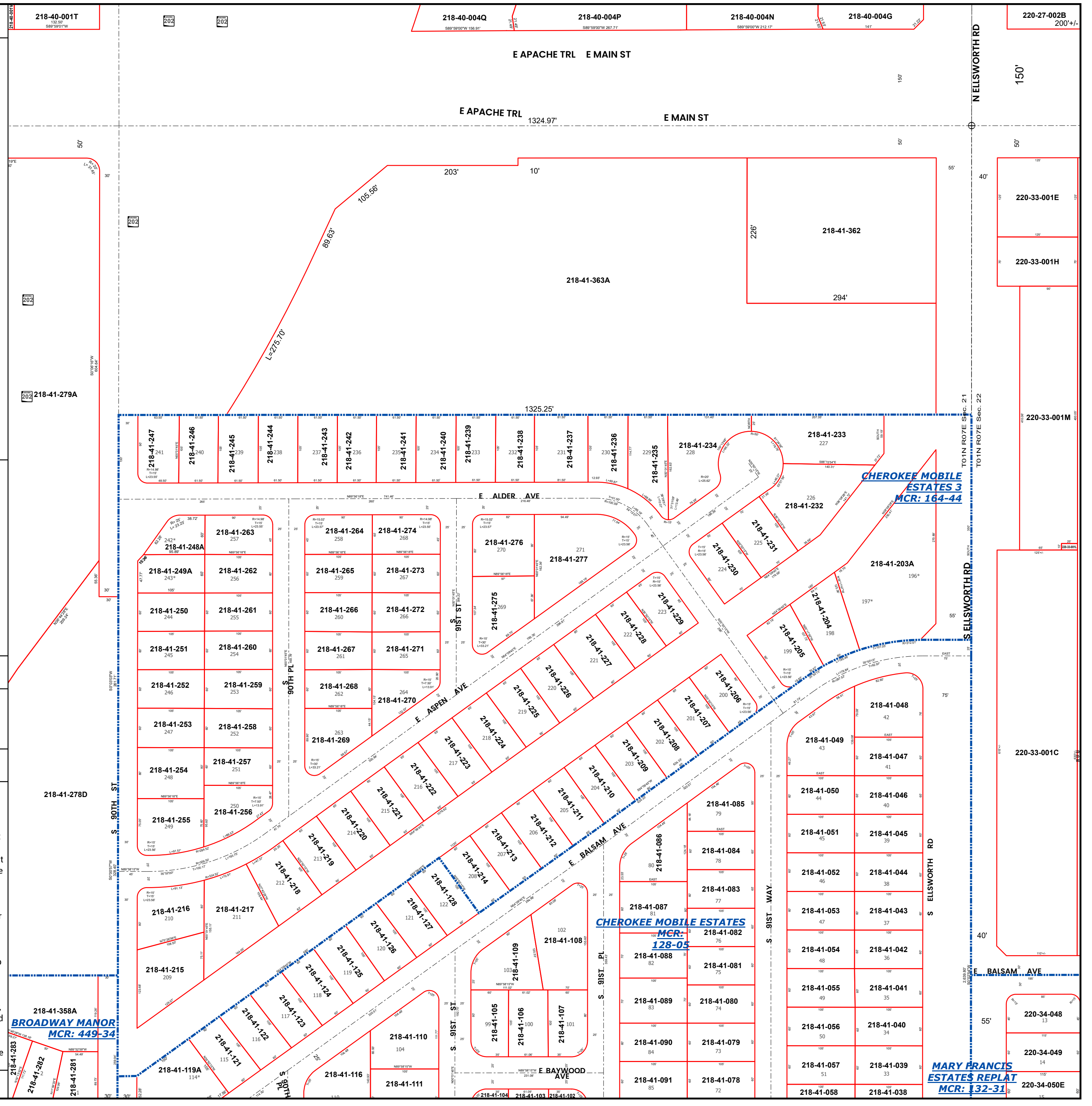
**LEGEND:** Tax Parcels (red outline), Sections (dashed line), Subdivisions (blue outline), Lots (small squares), Section Corners (circle with cross), Centerlines (dashed line)

**Disclaimer - Indemnification**  
CAUTION! USERS SHOULD INDEPENDENTLY RESEARCH AND VERIFY INFORMATION WITHIN THIS DATASET OR MAP BEFORE RELYING ON IT.

The Assessor's Office has compiled information within this dataset or map that it uses to identify, classify, and value real and personal property. Please contact the Assessor's Office at 602 506-3406 if you believe any information is incomplete, out of date, or incorrect so that appropriate corrections can be addressed. Please note that a statutory process is also available to correct errors pursuant to Arizona Revised Statutes 42-16254.

The Assessor does not guarantee that any information contained within this dataset or map is accurate, complete or current. In many instances, the Assessor has gathered information from independent sources and made it available within this dataset or map, and the original information may have contained errors and omissions. Errors and omissions may have occurred in the process of gathering, interpreting, and reporting the information. Information within this dataset or map is not updated "real time." In addition, Users are cautioned that the process used within this dataset or map to illustrate the boundaries of adjacent parcels is not always consistent with the recorded documents for such parcels. The parcel boundaries depicted within this dataset or maps are for illustrative purposes only, and the exact relationship of adjacent parcels should be independently researched and verified. The information provided within this dataset or map is not the equivalent of a title report or a real estate survey. Users should independently research, investigate, and verify all information before relying on it or using it in the preparation of legal documents.

Map Reprint Date: 2/27/2026



218-40-001T  
152.50  
S89°59'00"W

218-40-004Q  
88°59'00"W 156.91'

218-40-004P  
S89°59'00"W 267.71'

218-40-004N  
S89°59'00"W 212.17'

218-40-004G  
144'

220-27-002B  
200'+/-

218-41-279A

218-41-278D

218-41-358A  
BROADWAY MANOR  
MCR: 449-34

CHEROKEE MOBILE ESTATES  
MCR: 128-05

CHEROKEE MOBILE ESTATES 3  
MCR: 164-44

MARY FRANCIS ESTATES REPLAT  
MCR: 132-31

220-33-001E

220-33-001H

220-33-001M

220-33-001C

220-34-048

220-34-049

220-34-050E