

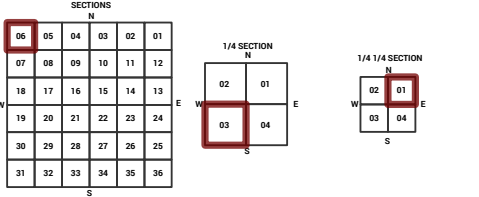
MARICOPA COUNTY
STATE OF ARIZONA

PT. SECTION 6 T01S R07E

856 - 06 - 03 - 01

TOWNSHIP & RANGE SECTION 1/4 SECTION 1/4 1/4 SECTION

714	715	716	717	718	719	720	721	722	723	724	725	726	727	728	729	730	731	732	733
732	733	734	735	736	737	738	739	740	741	742	743	744	745	746	747	748	749	750	751
752	753	754	755	756	757	758	759	760	761	762	763	764	765	766	767	768	769	770	771
772	773	774	775	776	777	778	779	780	781	782	783	784	785	786	787	788	789	790	791
792	793	794	795	796	797	798	799	800	801	802	803	804	805	806	807	808	809	810	811
812	813	814	815	816	817	818	819	820	821	822	823	824	825	826	827	828	829	830	831
832	833	834	835	836	837	838	839	840	841	842	843	844	845	846	847	848	849	850	851
852	853	854	855	856	857	858	859	860	861	862	863	864	865	866	867	868	869	870	871
872	873	874	875	876	877	878	879	880	881	882	883	884	885	886	887	888	889	890	891
892	893	894	895	896	897	898	899	900	901	902	903	904	905	906	907	908	909	910	911
912	913	914	915	916	917	918	919	920	921	922	923	924	925	926	927	928	929	930	931
932	933	934	935	936	937	938	939	940	941	942	943	944	945	946	947	948	949	950	951
952	953	954	955	956	957	958	959	960	961	962	963	964	965	966	967	968	969	970	971
972	973	974	975	976	977	978	979	980	981	982	983	984	985	986	987	988	989	990	991
992	993	994	995	996	997	998	999	1000											



Parcels updated within this map



MARICOPA COUNTY
ASSESSOR'S OFFICE
301 W. Jefferson Street
Phoenix, AZ 85003

MARICOPA COUNTY
ASSESSOR'S OFFICE
<https://mcaassessor.maricopa.gov>

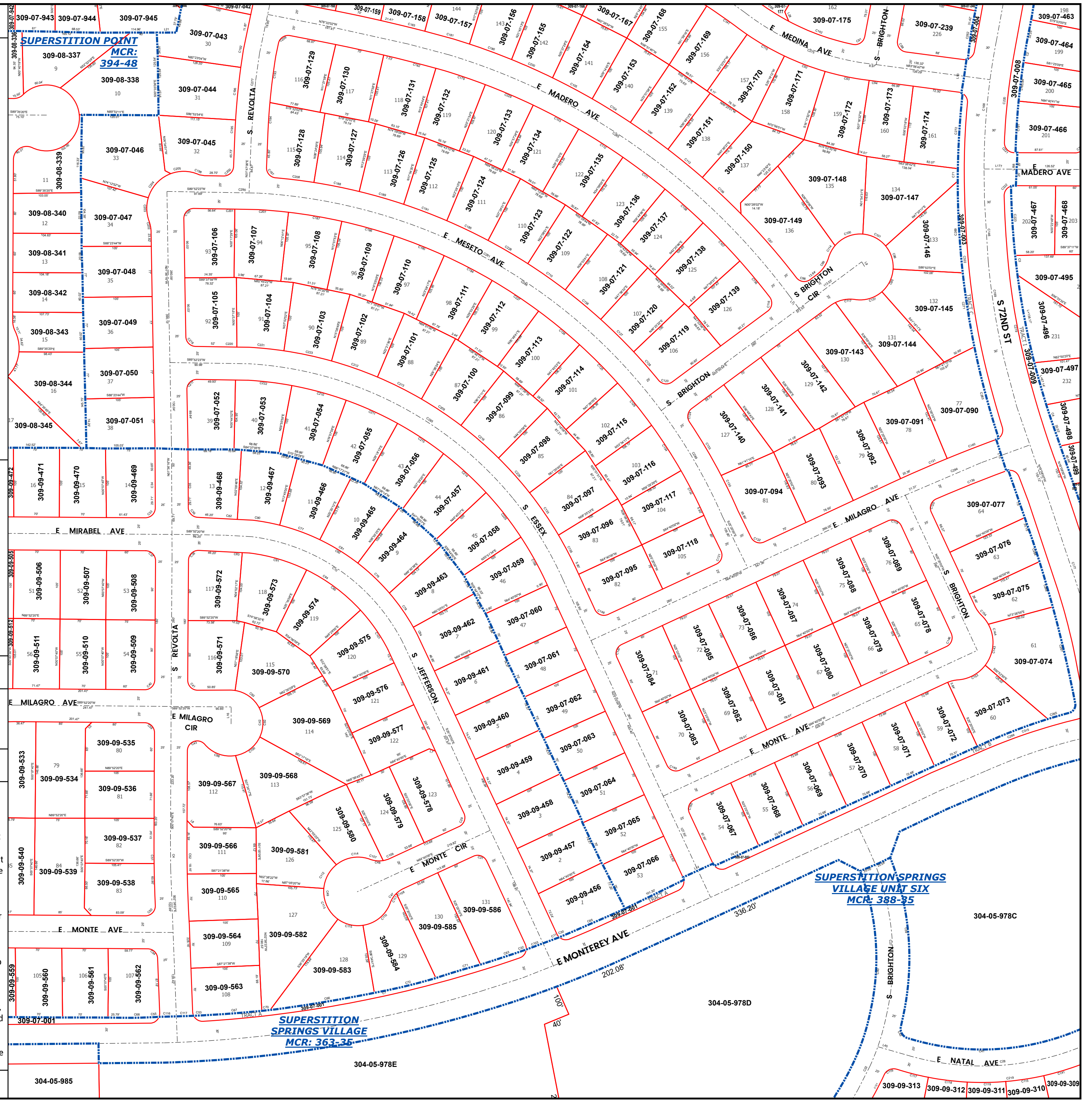
LEGEND: Tax Parcels (red outline), Sections (dashed line), Subdivisions (blue dashed line), Lots (small red outline), Section Corners (circle with cross), Centerlines (dotted line)

Disclaimer - Indemnification
CAUTION! USERS SHOULD INDEPENDENTLY RESEARCH AND VERIFY INFORMATION WITHIN THIS DATASET OR MAP BEFORE RELYING ON IT.

The Assessor's Office has compiled information within this dataset or map that it uses to identify, classify, and value real and personal property. Please contact the Assessor's Office at 602 506-3406 if you believe any information is incomplete, out of date, or incorrect so that appropriate corrections can be addressed. Please note that a statutory process is also available to correct errors pursuant to Arizona Revised Statutes 42-16254.

The Assessor does not guarantee that any information contained within this dataset or map is accurate, complete or current. In many instances, the Assessor has gathered information from independent sources and made it available within this dataset or map, and the original information may have contained errors and omissions. Errors and omissions may have occurred in the process of gathering, interpreting, and reporting the information. Information within this dataset or map is not updated "real time." In addition, Users are cautioned that the process used within this dataset or map to illustrate the boundaries of adjacent parcels is not always consistent with the recorded documents for such parcels. The parcel boundaries depicted within this dataset or maps are for illustrative purposes only, and the exact relationship of adjacent parcels should be independently researched and verified. The information provided within this dataset or map is not the equivalent of a title report or a real estate survey. Users should independently research, investigate, and verify all information before relying on it or using it in the preparation of legal documents.

Map Reprint Date: 2/27/2026



304-05-985

304-05-978E

304-05-978D

304-05-978C

SUPERSTITION SPRINGS VILLAGE UNIT SIX
MCR: 388-35

SUPERSTITION SPRINGS VILLAGE
MCR: 363-35

SUPERSTITION POINT
MCR: 394-48

309-09-533

309-09-535

309-09-534

309-09-536

309-09-537

309-09-539

309-09-538

309-09-540

309-09-539

309-09-561

309-09-562

309-09-560

309-09-561

309-09-562

309-09-563

309-09-564

309-09-565

309-09-566

309-09-567

309-09-568

309-09-569

309-09-570

309-09-571

309-09-572

309-09-573

309-09-574

309-09-575

309-09-576

309-09-577

309-09-578

309-09-579

309-09-580

309-09-581

309-09-582

309-09-583

309-09-584

309-09-585

309-09-586

309-09-587

309-09-588

309-09-589

309-09-590

309-09-591

309-09-592

309-09-593

309-09-594

309-09-595

309-09-596

309-09-597

309-09-598

309-09-599

309-09-600

309-09-601

309-09-602

309-09-603

309-09-604

309-09-605

309-09-606

309-09-607

309-09-608

309-09-609

309-09-610

309-09-611

309-09-612

309-09-613

309-09-614

309-09-615

309-09-616

309-09-617

309-09-618

309-09-619

309-09-620

309-09-621

309-09-622

309-09-623

309-09-624

309-09-625

309-09-626

309-09-627

309-09-628

309-09-629

309-09-630

309-09-631

309-09-632

309-09-633

309-09-634

309-09-635

309-09-636

309-09-637

309-09-638

309-09-639

309-09-640

309-09-641

309-09-642

309-09-643

309-09-644

309-09-645

309-09-646

309-09-647

309-09-648

309-09-649

309-09-650

309-09-651

309-09-652

309-09-653

309-09-654

309-09-655

309-09-656

309-09-657

309-09-658

309-09-659

309-09-660

309-09-661

309-09-662

309-09-663

309-09-664

309-09-665

309-09-666

309-09-667

309-09-668

309-09-669

309-09-670

309-09-671

309-09-672

309-09-673

309-09-674

309-09-675

309-09-676

309-09-677

309-09-678

309-09-679

309-09-680

309-09-681

309-09-682

309-09-683

309-09-684

309-09-685

309-09-686

309-09-687

309-09-688

309-09-689

309-09-690

309-09-691

309-09-692

309-09-693

309-09-694

309-09-695

309-09-696

309-09-697

309-09-698

309-09-699

309-09-700

309-09-701

309-09-702

309-09-703

309-09-704

309-09-705

309-09-706

309-09-707

309-09-708

309-09-709

309-09-710

309-09-711

309-09-712

309-09-713

309-09-714

309-09-715

309-09-716

309-09-717

309-09-718

309-09-719

309-09-720

309-09-721

309-09-722

309-09-723

309-09-724

309-09-725

309-09-726

309-09-727

309-09-728

309-09-729

309-09-730

309-09-731

309-09-732

309-09-733

309-09-734

309-09-735